



# YachtCharterFleet

THE SMARTEST WAY TO SEARCH



## PRINCESS MELDA

Yacht Charter Details for 'Princess Melda', the 41.5m Superyacht built by Neta Marine

### SPECIFICATIONS

LENGTH  
41.5m / 136'2

BEAM  
8.4m / 27'7

DRAFT  
2.4m / 7'10

YEAR  
2024

REFIT

CRUISING SPEED  
12 Knots

### ACCOMMODATION

| GUESTS | CABINS | CREW |
|--------|--------|------|
| 12     | 6      | 9    |

CABIN CONFIGURATION

### CHARTER RATES

SUMMER  
from  
€110,000 / week + expenses

WINTER  
from  
€110,000 / week + expenses

Details correct as of 13 Jun, 2025

FOR MORE INFORMATION:

CLICK HERE

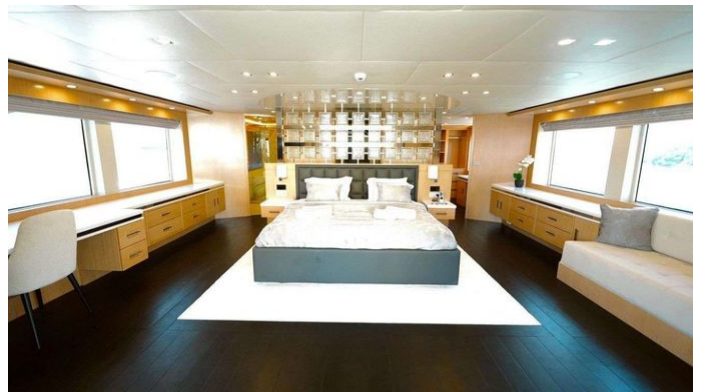
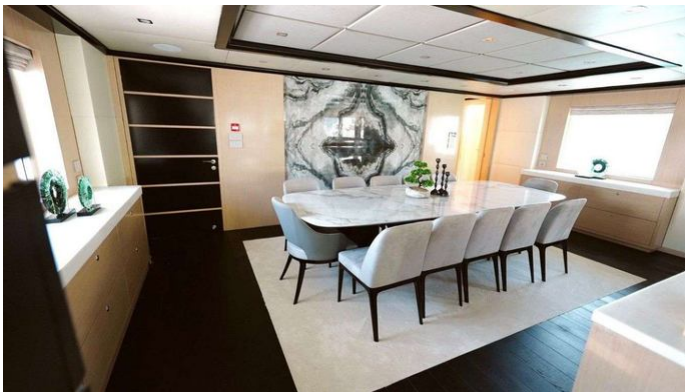


or SCAN QR CODE



[www.YachtCharterFleet.com](http://www.YachtCharterFleet.com)





MORE PHOTOS, VIDEO OR INTERACTIVE DECK PLANS:



[CLICK HERE](#)

## PRINCESS MELDA YACHT CHARTER

Superyacht PRINCESS MELDA was built in 2024 by Neta Marine. She is a 41.5m / 136'2 motor yacht with exterior design by Guido de Groot Design and interior styling by Guido de Groot Design . Princess Melda offers accommodation for up to 12 guests in 6 cabins with additional room for her crew of . She features a variety of amenities to ensure comfortable charter vacations. She also carries an impressive collection of toys as listed below.

## PRINCESS MELDA AMENITIES & TOYS



Sun Deck



Wi-Fi



Swimming Platform



Sunpads



Deck Jacuzzi



Beach Club



Air Conditioning

For a full up-to-date list of leisure facilities or amenities onboard Motor Yacht Princess Melda please contact your Yacht Charter Broker prior to booking your vacation. If there is a particular water toy that you would like, but it is not listed, then it may be possible to rent this equipment for you.

MORE TENDERS, TOYS & YACHT AMMENITIES INFO:



CLICK HERE

## CHARTER PRINCESS MELDA

If you are interested in chartering PRINCESS MELDA please contact your yacht charter broker for more information about booking a luxury charter vacation on board this Neta Marine superyacht .