



LISA OF THE SEAS

Yacht Charter Details for 'Lisa Of The Seas', the 20.36m Superyacht built by Fountaine Pajot

SPECIFICATIONS

LENGTH

20.36m / 66'10"

BEAM

9.84m / 32'3"

DRAFT

1.7m / 5'7"

YEAR

2020

REFIT

CRUISING SPEED

6 Knots

ACCOMMODATION

GUESTS

10

CABINS

5

CREW

3

CABIN CONFIGURATION

1 Master

1 VIP

3 Double

CHARTER RATES

SUMMER

from

€38,000 / week + expenses

WINTER

from

\$52,000 / week + expenses

Details correct as of 15 Aug, 2022

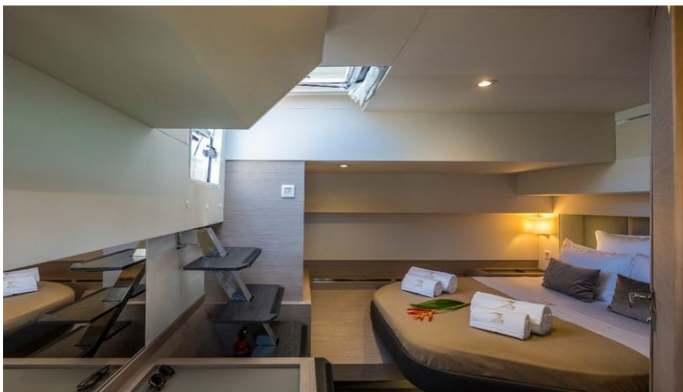
FOR MORE INFORMATION:

CLICK HERE



or SCAN QR CODE





MORE PHOTOS, VIDEO OR INTERACTIVE DECK PLANS:

 [CLICK HERE](#)

LISA OF THE SEAS YACHT CHARTER

Superyacht LISA OF THE SEAS was built in 2020 by Fountaine Pajot. She is a 20.36m / 66'10 motor/sailer yacht with exterior design by . Lisa Of The Seas offers accommodation for up to 10 guests in 5 cabins with additional room for her crew of 3. She features a variety of amenities to ensure comfortable charter vacations. She also carries an impressive collection of toys as listed below.

LISA OF THE SEAS AMENITIES & TOYS



Outdoor Shower



Sunpads



Swimming Platform



Wi-Fi



Deck Jacuzzi



Air Conditioning

For a full up-to-date list of leisure facilities or amenities onboard Motor/Sailer Yacht Lisa Of The Seas please contact your Yacht Charter Broker prior to booking your vacation. If there is a particular water toy that you would like, but it is not listed, then it may be possible to rent this equipment for you.

MORE TENDERS, TOYS & YACHT AMMENITIES INFO:



[CLICK HERE](#)

CHARTER LISA OF THE SEAS

If you are interested in chartering LISA OF THE SEAS please contact your yacht charter broker for more information about booking a luxury charter vacation on board this Fountaine Pajot superyacht .