



# YachtCharterFleet

THE SMARTEST WAY TO SEARCH



## MAVE

Yacht Charter Details for 'Mave', the 26.82m Superyacht built by Sanlorenzo

### SPECIFICATIONS

LENGTH  
26.82m / 88'

BEAM                      DRAFT  
7.2m / 23'7              1.7m / 5'7

YEAR                      REFIT  
2020

CRUISING SPEED  
20 Knots

### ACCOMMODATION

GUESTS      CABINS      CREW  
**8**              **4**              **4**

CABIN CONFIGURATION  
1 Master              1 VIP  
1 Double              1 Twin

### CHARTER RATES

SUMMER  
from  
\$75,000 / week + expenses

WINTER  
from  
\$75,000 / week + expenses

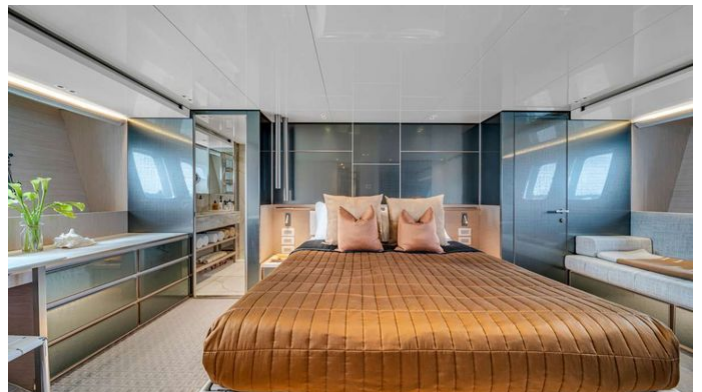
Details correct as of 24 Jul, 2024

FOR MORE INFORMATION:

[CLICK HERE](#)

or SCAN QR CODE





MORE PHOTOS, VIDEO OR INTERACTIVE DECK PLANS:



[CLICK HERE](#)

## MAVE YACHT CHARTER

Superyacht MAVE was built in 2020 by Sanlorenzo. She is a 26.82m / 88' SX88 motor yacht with exterior design by Officina Italiana Design and interior styling by Studio Lissoni . Mave offers accommodation for up to 8 guests in 4 cabins with additional room for her crew of 4. She features a variety of amenities to ensure comfortable charter vacations. She also carries an impressive collection of toys as listed below.

## MAVE AMENITIES & TOYS



Underwater Lights



Wi-Fi



At-Anchor Stabilizers



Hydraulic Swim Platform



Sunpads



Air Conditioning



BBQ

For a full up-to-date list of leisure facilities or amenities onboard Motor Yacht Mave please contact your Yacht Charter Broker prior to booking your vacation. If there is a particular water toy that you would like, but it is not listed, then it may be possible to rent this equipment for you.

MORE TENDERS, TOYS & YACHT AMMENITIES INFO:



[CLICK HERE](#)

## CHARTER MAVE

If you are interested in chartering MAVE please contact your yacht charter broker for more information about booking a luxury charter vacation on board this Sanlorenzo superyacht .