



DINAIA

Yacht Charter Details for 'Dinaia', the 32.2m Superyacht built by Sanlorenzo

SPECIFICATIONS

LENGTH
32.2m / 106ft

BEAM DRAFT
7.05m / 23ft 2m / 7ft

YEAR
2018

CRUISING SPEED
23 Knots

ACCOMMODATION

GUESTS	CABINS	CREW
10	5	6

CABIN CONFIGURATION
1 Master 2 Vip
2 Double

CHARTER RATES

SUMMER
from
€79,000 / week + expenses

WINTER
from
€69,000 / week + expenses

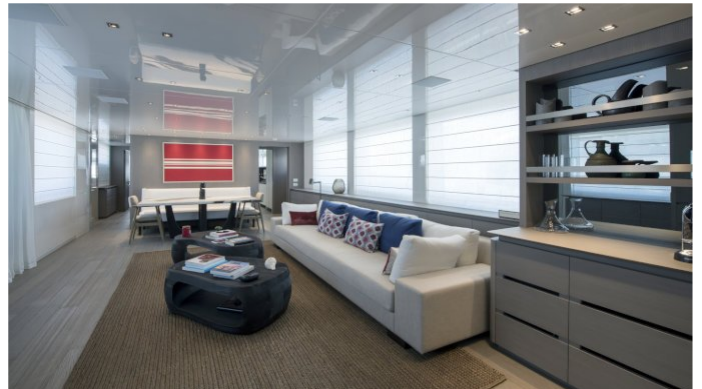
Details correct as of 18 Jun, 2019

FOR MORE INFORMATION:

[CLICK HERE](#) 

or SCAN QR CODE





MORE PHOTOS, VIDEO OR INTERACTIVE DECK PLANS:

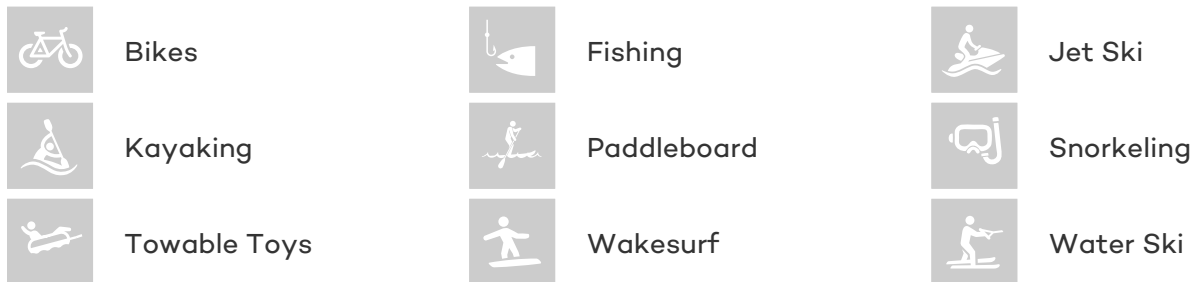


[CLICK HERE](#)

DINAIA YACHT CHARTER

Superyacht DINAIA was built in 2018 by Sanlorenzo. She is a 32.2m / 106ft SL106 motor yacht with exterior design by Francesco Paszkowski and interior styling by Amélie Gillier. DINAIA offers accommodation for up to 10 guests in 5 cabins with additional room for her crew of 6. She features a variety of amenities to ensure comfortable charter vacations, including . She also carries an impressive collection of toys as listed below.

DINAIA AMENITIES & TOYS



For a full up-to-date list of leisure facilities or amenities onboard Motor Yacht Dinaia please contact your Yacht Charter Broker prior to booking your vacation. If there is a particular water toy that you would like, but it is not listed, then it may be possible to rent this equipment for you.

MORE TENDERS, TOYS & YACHT AMMENITIES INFO:



[CLICK HERE](#)

CHARTER DINAIA

If you are interested in chartering DINAIA please contact your yacht charter broker for more information about booking a luxury charter vacation on board this Sanlorenzo superyacht .