



FLAME

Yacht Charter Details for 'Flame', the 20m Superyacht built by Feadship

SPECIFICATIONS

LENGTH
20m / 66ft

BEAM DRAFT
5m / 16ft 1.40m / 5ft

YEAR REFIT
1956 1997

CRUISING SPEED
Knots

ACCOMMODATION

GUESTS CABINS CREW
6 **3** **2**

CABIN CONFIGURATION
1 Master 2 Double

CHARTER RATES

SUMMER
from
\$14,000 / week + expenses

WINTER
from
\$14,000 / week + expenses

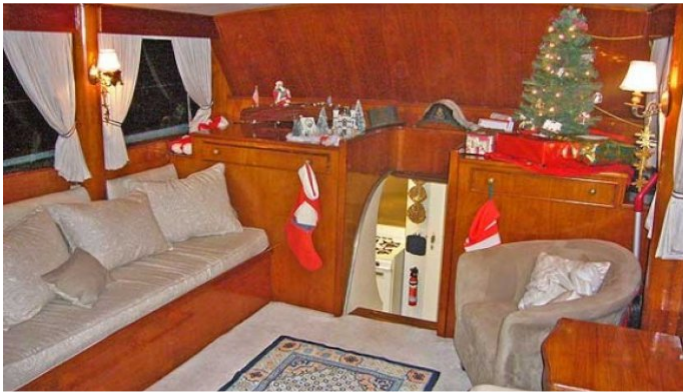
Details correct as of 27 May, 2018

FOR MORE INFORMATION:

[CLICK HERE](#) 

or SCAN QR CODE





MORE PHOTOS, VIDEO OR INTERACTIVE DECK PLANS:



[CLICK HERE](#)

FLAME YACHT CHARTER

Superyacht FLAME was built in 1956 by Feadship. She is a 20m / 66ft motor yacht with exterior design by and interior styling by . FLAME offers accommodation for up to 6 guests in 3 cabins with additional room for her crew of 2. She features a variety of amenities to ensure comfortable charter vacations, including Air Conditioning. She also carries an impressive collection of toys as listed below.

FLAME AMENITIES & TOYS



Beach Games



Kayaking



Snorkeling



Wakeboard



Water Ski

For a full up-to-date list of leisure facilities or amenities onboard Motor Yacht Flame please contact your Yacht Charter Broker prior to booking your vacation. If there is a particular water toy that you would like, but it is not listed, then it may be possible to rent this equipment for you.

MORE TENDERS, TOYS & YACHT AMMENITIES INFO:



[CLICK HERE](#)

CHARTER FLAME

If you are interested in chartering FLAME please contact your yacht charter broker for more information about booking a luxury charter vacation on board this Feadship superyacht .