



YachtCharterFleet

THE SMARTEST WAY TO SEARCH



ANDA

Yacht Charter Details for 'Anda', the 41.86m Superyacht built by Brodrene Lothe A/S

SPECIFICATIONS

LENGTH
41.86m / 137ft

BEAM DRAFT
7.49m / 25ft 3.2m / 10ft

YEAR REFIT
1964 2012

CRUISING SPEED
10 Knots

ACCOMMODATION

GUESTS CABINS CREW
10 5 8

CABIN CONFIGURATION
1 Master 2 Double
2 Twin

CHARTER RATES

SUMMER
from
\$175,000 / week + expenses

WINTER
from
\$175,000 / week + expenses

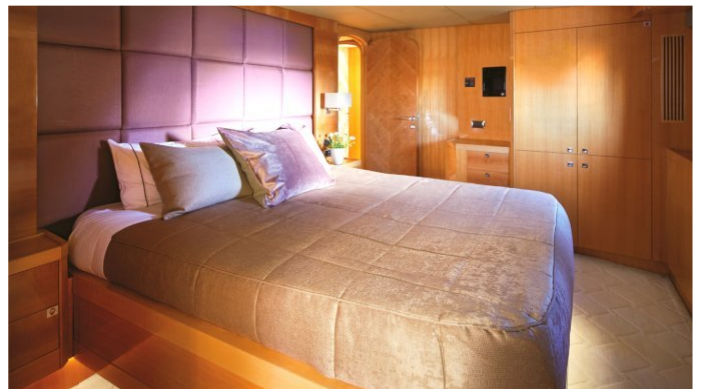
Details correct as of 26 Jun, 2017

FOR MORE INFORMATION:

[CLICK HERE](#) 

or SCAN QR CODE





MORE PHOTOS, VIDEO OR INTERACTIVE DECK PLANS:

 [CLICK HERE](#)

ANDA YACHT CHARTER

Superyacht ANDA was built in 1964 by Brodrene Lothe A/S. She is a 41.86m / 137ft conversion motor yacht with exterior design by and interior styling by . ANDA offers accommodation for up to 10 guests in 5 cabins with additional room for her crew of 8. She features a variety of amenities to ensure comfortable charter vacations, including Air Conditioning, Deck Jacuzzi, Stabilisers underway, Air Conditioning, Stabilisers underway, Jacuzzi (on deck) and WiFi connection on board. She also carries an impressive collection of toys as listed below.

ANDA AMENITIES & TOYS



Air Conditioning



Deck Jacuzzi



Jet Ski



Wi Fi

For a full up-to-date list of leisure facilities or amenities onboard Motor Yacht Anda please contact your Yacht Charter Broker prior to booking your vacation. If there is a particular water toy that you would like, but it is not listed, then it may be possible to rent this equipment for you.

MORE TENDERS, TOYS & YACHT AMMENITIES INFO:



[CLICK HERE](#)

CHARTER ANDA

If you are interested in chartering ANDA please contact your yacht charter broker for more information about booking a luxury charter vacation on board this Brodrene Lothe A/S superyacht .