



YachtCharterFleet

THE SMARTEST WAY TO SEARCH



DARLING

Yacht Charter Details for 'Darling', the 41.09m Superyacht built by Marin LuxurYachts

SPECIFICATIONS

LENGTH

41.09m / 134'10

BEAM

8m / 26'3

DRAFT

2.3m / 7'7

YEAR

2014

REFIT

CRUISING SPEED

11 Knots

ACCOMMODATION

GUESTS

10

CABINS

5

CREW

7

CABIN CONFIGURATION

1 Master

2 Double

2 Twin

CHARTER RATES

Details correct as of 30 Apr, 2025

FOR MORE INFORMATION:

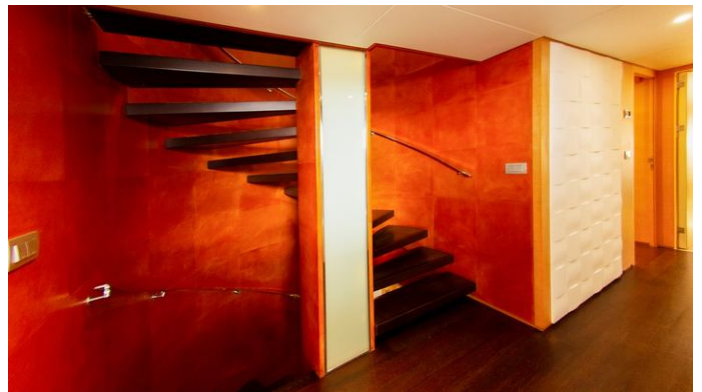
[CLICK HERE](#)



or SCAN QR CODE



www.YachtCharterFleet.com



MORE PHOTOS, VIDEO OR INTERACTIVE DECK PLANS:



[CLICK HERE](#)

DARLING YACHT CHARTER

Superyacht DARLING was built in 2014 by Marin LuxurYachts. She is a 41.09m / 134'10 Custom motor yacht with exterior design by Inigo Echenique and interior styling by AskDeco . Darling offers accommodation for up to 10 guests in 5 cabins with additional room for her crew of 7. She features a variety of amenities to ensure comfortable charter vacations, including, Air Conditioning, WiFi connection on board, Deck Jacuzzi, Gym/exercise equipment, Stabilisers underway & Tender Garage. She also carries an impressive collection of toys as listed below.

DARLING AMENITIES & TOYS



Jacuzzi



Tender Garage



Stabilizers Underway



Wi-Fi



Deck Jacuzzi



Gym



Air Conditioning

For a full up-to-date list of leisure facilities or amenities onboard Motor Yacht Darling please contact your Yacht Charter Broker prior to booking your vacation. If there is a particular water toy that you would like, but it is not listed, then it may be possible to rent this equipment for you.

MORE TENDERS, TOYS & YACHT AMMENITIES INFO:



[CLICK HERE](#)

CHARTER DARLING

If you are interested in chartering DARLING please contact your yacht charter broker for more information about booking a luxury charter vacation on board this Marin LuxurYachts superyacht .