



## LA FENICE

Yacht Charter Details for 'La Fenice', the 33m Superyacht built by Richard Iron Works

### SPECIFICATIONS

**LENGTH**  
33m / 108ft

**BEAM**                      **DRAFT**  
6.05m / 20ft                2.8m / 9ft

**YEAR**                      **REFIT**  
1962                            2008

**CRUISING SPEED**  
10 Knots

### ACCOMMODATION

GUESTS	CABINS	CREW
8	4	5

CABIN CONFIGURATION

### CHARTER RATES

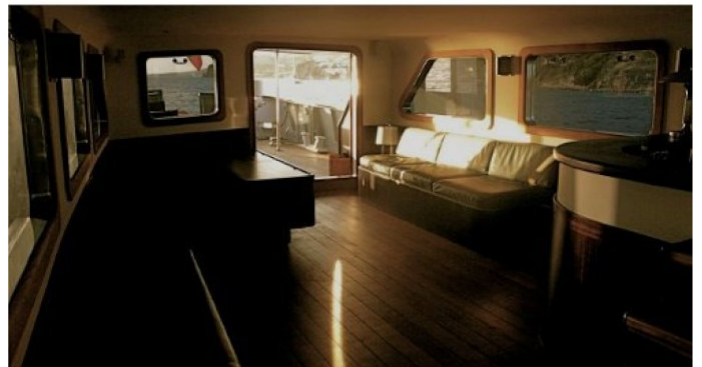
Details correct as of 15 Aug, 2018

FOR MORE INFORMATION:

[CLICK HERE](#) 

or SCAN QR CODE





**MORE PHOTOS, VIDEO OR INTERACTIVE DECK PLANS:**



[CLICK HERE](#)



## LA FENICE YACHT CHARTER

Superyacht LA FENICE was built in 1962 by Richard Iron Works. She is a 33m / 108ft motor yacht with exterior design by and interior styling by Christian Liaigre. LA FENICE offers accommodation for up to 8 guests in 4 cabins with additional room for her crew of 5. She features a variety of amenities to ensure comfortable charter vacations, including . She also carries an impressive collection of toys as listed below.

## LA FENICE AMENITIES & TOYS



Snorkeling



Wakeboard

For a full up-to-date list of leisure facilities or amenities onboard Motor Yacht La Fenice please contact your Yacht Charter Broker prior to booking your vacation. If there is a particular water toy that you would like, but it is not listed, then it may be possible to rent this equipment for you.

**MORE TENDERS, TOYS & YACHT AMMENITIES INFO:**



[CLICK HERE](#)

## CHARTER LA FENICE

If you are interested in chartering LA FENICE please contact your yacht charter broker for more information about booking a luxury charter vacation on board this Richard Iron Works superyacht .