



YachtCharterFleet

THE SMARTEST WAY TO SEARCH



ILLUSION II

Yacht Charter Details for 'Illusion II', the 40m Superyacht built by Lloyds Ships

SPECIFICATIONS

LENGTH
40m / 131'3

BEAM
9m / 29'6

DRAFT
2.29m / 7'6

YEAR
1991

REFIT
2023

CRUISING SPEED
12 Knots

ACCOMMODATION

GUESTS	CABINS	CREW
12	6	8

CABIN CONFIGURATION

1 Master	2 VIP
3 Double	

CHARTER RATES

SUMMER
from
€145,000 / week + expenses

WINTER
from
€110,000 / week + expenses

Details correct as of 30 Apr, 2025

FOR MORE INFORMATION:

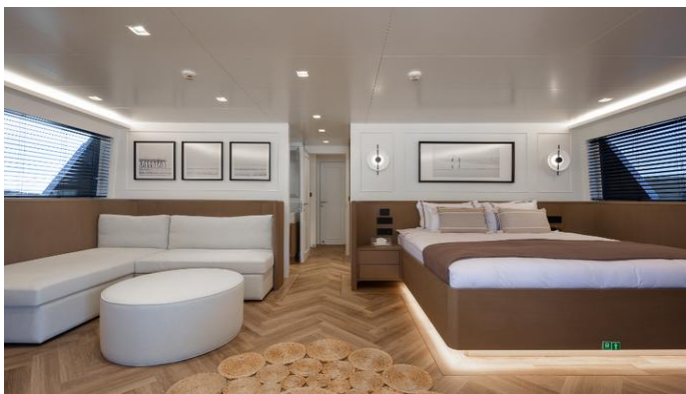
CLICK HERE



or SCAN QR CODE



www.YachtCharterFleet.com



MORE PHOTOS, VIDEO OR INTERACTIVE DECK PLANS:












[CLICK HERE](#)

ILLUSION II YACHT CHARTER

Superyacht ILLUSION II was built in 1991 by Lloyds Ships. She is a 40m / 131'3 Custom motor yacht with exterior design by Scaro Design and interior styling by Oguz Develi . Illusion II offers accommodation for up to 12 guests in 6 cabins with additional room for her crew of 8. She features a variety of amenities to ensure comfortable charter vacations, including, Swimming Platform, Air Conditioning & Owner Study. She also carries an impressive collection of toys as listed below.

ILLUSION II AMENITIES & TOYS

	Exterior Bar		Underwater Lights		Sun Deck
	Outdoor Shower		Swimming Platform		Sunpads
	Deck Jacuzzi		Gym		Air Conditioning

For a full up-to-date list of leisure facilities or amenities onboard Motor Yacht Illusion II please contact your Yacht Charter Broker prior to booking your vacation. If there is a particular water toy that you would like, but it is not listed, then it may be possible to rent this equipment for you.

MORE TENDERS, TOYS & YACHT AMMENITIES INFO:



[CLICK HERE](#)

CHARTER ILLUSION II

If you are interested in chartering ILLUSION II please contact your yacht charter broker for more information about booking a luxury charter vacation on board this Lloyds Ships superyacht .