



SEVEN S

Yacht Charter Details for 'Seven S', the 40.5m Superyacht built by Mondo Marine

SPECIFICATIONS

LENGTH

40.5m / 132'10

BEAM

8.5m / 27'11

DRAFT

2.15m / 7'1

YEAR

2010

REFIT

2014

CRUISING SPEED

14 Knots

ACCOMMODATION

GUESTS

10

CABINS

5

CREW

8

CABIN CONFIGURATION

1 Master

3 Double

1 Twin

1 Pullman

CHARTER RATES

SUMMER

from

€130,000 / week + expenses

WINTER

from

€130,000 / week + expenses

Details correct as of 26 Oct, 2021

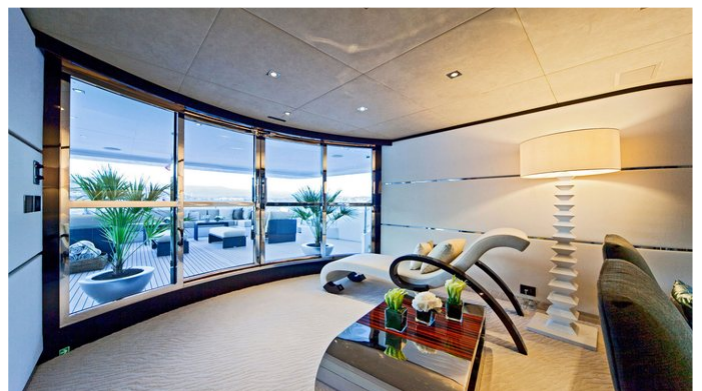
FOR MORE INFORMATION:

[CLICK HERE](#)



or **SCAN QR CODE**





MORE PHOTOS, VIDEO OR INTERACTIVE DECK PLANS:



[CLICK HERE](#)

SEVEN S YACHT CHARTER

Superyacht SEVEN S was built in 2010 by Mondo Marine. She is a 40.5m / 132'10 motor yacht with exterior design by Cor D. Rover Design and interior styling by LUCA DINI Design & Architecture . Seven S offers accommodation for up to 10 guests in 5 cabins with additional room for her crew of 8. She features a variety of amenities to ensure comfortable charter vacations, including, Air Conditioning, WiFi connection on board, Deck Jacuzzi & Stabilizers at Anchor. She also carries an impressive collection of toys as listed below.

SEVEN S AMENITIES & TOYS



Jacuzzi



Wi-Fi



At-Anchor Stabilizers



Deck Jacuzzi



Movie Theatre



Gym



Air Conditioning

For a full up-to-date list of leisure facilities or amenities onboard Motor Yacht Seven S please contact your Yacht Charter Broker prior to booking your vacation. If there is a particular water toy that you would like, but it is not listed, then it may be possible to rent this equipment for you.

MORE TENDERS, TOYS & YACHT AMMENITIES INFO:



[CLICK HERE](#)

CHARTER SEVEN S

If you are interested in chartering SEVEN S please contact your yacht charter broker for more information about booking a luxury charter vacation on board this Mondo Marine superyacht .