



## O'REA

Yacht Charter Details for 'O'Rea', the 42.06m Superyacht built by Alucraft

### SPECIFICATIONS

**LENGTH**

42.06m / 138ft

**BEAM**

7.32m / 24ft

**DRAFT**

2.01m / 7ft

**YEAR**

1984

**REFIT**

1999

**CRUISING SPEED**

11 Knots

### ACCOMMODATION

**GUESTS**

12

**CABINS**

5

**CREW**

5

**CABIN CONFIGURATION**

1 Master

2 Double

2 Twin

### CHARTER RATES

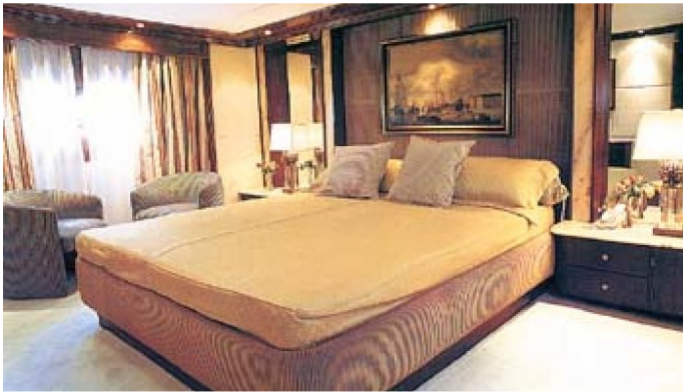
Details correct as of 21 Apr, 2018

FOR MORE INFORMATION:

[CLICK HERE](#) 

or SCAN QR CODE





**MORE PHOTOS, VIDEO OR INTERACTIVE DECK PLANS:**



[CLICK HERE](#)

## O'REA YACHT CHARTER

Superyacht O'REA was built in 1984 by Alucraft. She is a 42.06m / 138ft motor yacht with exterior design by Ugo Costaguta and interior styling by . O'REA offers accommodation for up to 12 guests in 5 cabins with additional room for her crew of 5. She features a variety of amenities to ensure comfortable charter vacations, including . She also carries an impressive collection of toys as listed below.

---

## O'REA AMENITIES & TOYS

For a full up-to-date list of leisure facilities or amenities onboard Motor Yacht O'Rea please contact your Yacht Charter Broker prior to booking your vacation. If there is a particular water toy that you would like, but it is not listed, then it may be possible to rent this equipment for you.

**MORE TENDERS, TOYS & YACHT AMMENITIES INFO:**



[CLICK HERE](#)

## CHARTER O'REA

If you are interested in chartering O'REA please contact your yacht charter broker for more information about booking a luxury charter vacation on board this Alucraft superyacht .