



MATA MUA

Yacht Charter Details for 'Mata Mua', the 38.5m Superyacht built by Scheepswerf Friesland

SPECIFICATIONS

LENGTH

38.5m / 126ft

BEAM

8.1m / 27ft

DRAFT

3.6m / 12ft

YEAR

1991

REFIT

2004

CRUISING SPEED

10 Knots

ACCOMMODATION

GUESTS

8

CABINS

4

CREW

7

CABIN CONFIGURATION

2 Double

4 Twin

CHARTER RATES

Details correct as of 19 Jul, 2018

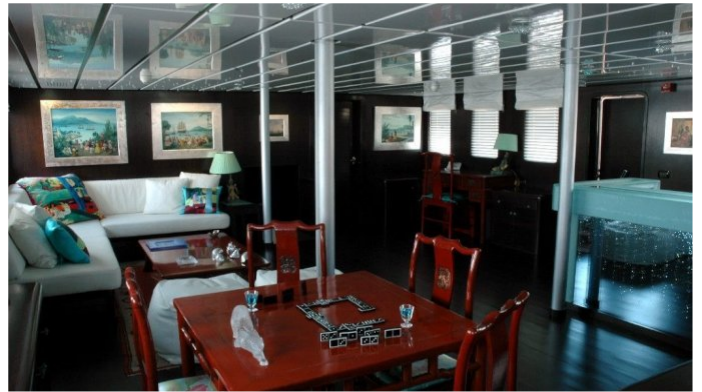
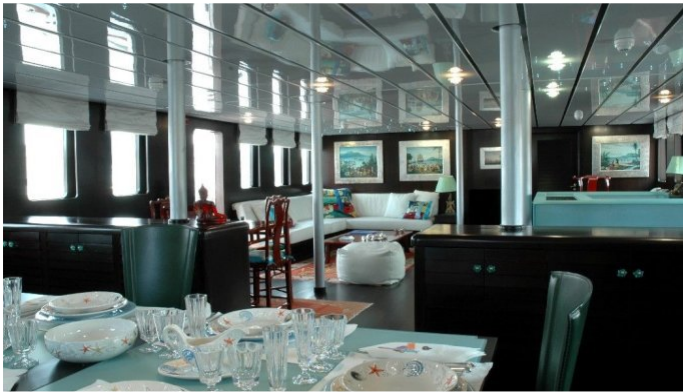
FOR MORE INFORMATION:

[CLICK HERE](#)



or **SCAN QR CODE**





MORE PHOTOS, VIDEO OR INTERACTIVE DECK PLANS:



[CLICK HERE](#)

MATA MUA YACHT CHARTER

Superyacht MATA MUA was built in 1991 by Scheepswerf Friesland. She is a 38.5m / 126ft sail yacht with exterior design by Diana Yacht Design and interior styling by Lemmer. MATA MUA offers accommodation for up to 8 guests in 4 cabins with additional room for her crew of 7. She features a variety of amenities to ensure comfortable charter vacations, including Air Conditioning. She also carries an impressive collection of toys as listed below.

MATA MUA AMENITIES & TOYS

 AC
*

Air Conditioning

For a full up-to-date list of leisure facilities or amenities onboard Sail Yacht Mata Mua please contact your Yacht Charter Broker prior to booking your vacation. If there is a particular water toy that you would like, but it is not listed, then it may be possible to rent this equipment for you.

MORE TENDERS, TOYS & YACHT AMMENITIES INFO:



[CLICK HERE](#)

CHARTER MATA MUA

If you are interested in chartering MATA MUA please contact your yacht charter broker for more information about booking a luxury charter vacation on board this Scheepswerf Friesland superyacht .