



YachtCharterFleet

THE SMARTEST WAY TO SEARCH



PALOMA

Yacht Charter Details for 'Paloma', the 60.25m Superyacht built by Ishikawajima-Harima Heavy Ind.

SPECIFICATIONS

LENGTH
60.25m / 198ft

BEAM **DRAFT**
8.85m / 29ft 2.85m / 9ft

YEAR **REFIT**
1965 2004

CRUISING SPEED
15 Knots

ACCOMMODATION

GUESTS	CABINS	CREW
12	7	14

CABIN CONFIGURATION

CHARTER RATES

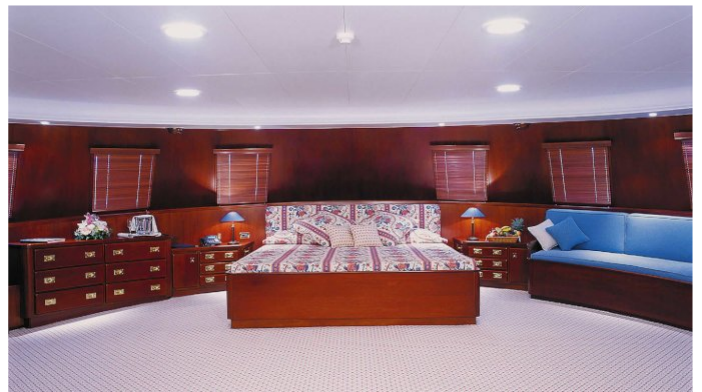
Details correct as of 23 Jun, 2017

FOR MORE INFORMATION:

[CLICK HERE](#) 

or SCAN QR CODE





MORE PHOTOS, VIDEO OR INTERACTIVE DECK PLANS:

 [CLICK HERE](#)

PALOMA YACHT CHARTER

Superyacht PALOMA was built in 1965 by Ishikawajima-Harima Heavy Ind.. She is a 60.25m / 198ft motor yacht with exterior design by Ishikawajima-Harima Heavy Ind. and interior styling by . PALOMA offers accommodation for up to 12 guests in 7 cabins with additional room for her crew of 14. She features a variety of amenities to ensure comfortable charter vacations, including Air Conditioning, Stabilizers at Anchor, WiFi connection on board and Deck Jacuzzi. She also carries an impressive collection of toys as listed below.

PALOMA AMENITIES & TOYS



Air Conditioning



Deck Jacuzzi



Stabilizers



Wi Fi

For a full up-to-date list of leisure facilities or amenities onboard Motor Yacht Paloma please contact your Yacht Charter Broker prior to booking your vacation. If there is a particular water toy that you would like, but it is not listed, then it may be possible to rent this equipment for you.

MORE TENDERS, TOYS & YACHT AMMENITIES INFO:



[CLICK HERE](#)

CHARTER PALOMA

If you are interested in chartering PALOMA please contact your yacht charter broker for more information about booking a luxury charter vacation on board this Ishikawajima-Harima Heavy Ind. superyacht .