



ROYAL PELAGIC

Yacht Charter Details for 'Royal Pelagic', the 39.01m Superyacht built by Martinolich Sb

SPECIFICATIONS

LENGTH

39.01m / 128ft

BEAM

10.06m / 33ft

DRAFT

4.27m / 14ft

YEAR

1968

REFIT

2005

CRUISING SPEED

10 Knots

ACCOMMODATION

GUESTS

17

CABINS

6

CREW

9

CABIN CONFIGURATION

6 Double

5 Pullman

CHARTER RATES

Details correct as of 21 Jul, 2017

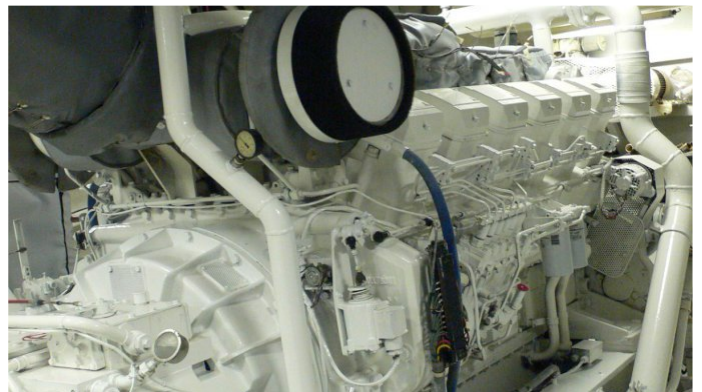
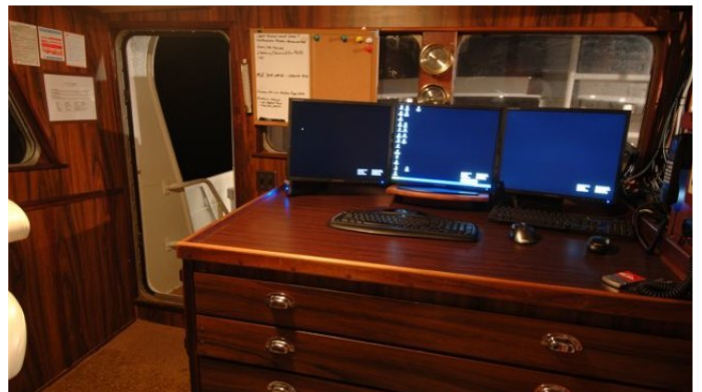
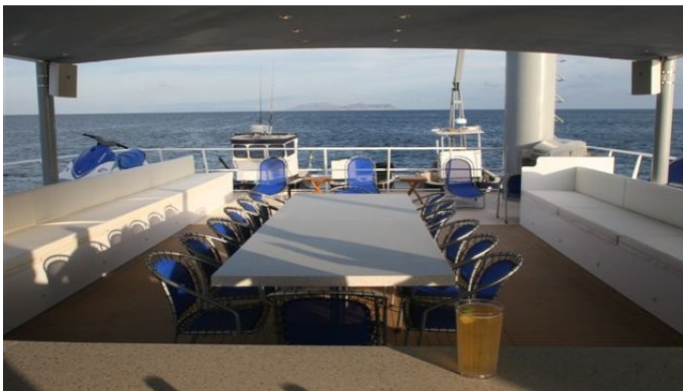
FOR MORE INFORMATION:

[CLICK HERE](#)



or **SCAN QR CODE**





MORE PHOTOS, VIDEO OR INTERACTIVE DECK PLANS:

 [CLICK HERE](#)

ROYAL PELAGIC YACHT CHARTER

Superyacht ROYAL PELAGIC was built in 1968 by Martinolich Sb. She is a 39.01m / 128ft custom motor yacht with exterior design by Martinolich SB Corp. and interior styling by . ROYAL PELAGIC offers accommodation for up to 17 guests in 6 cabins with additional room for her crew of 9. She features a variety of amenities to ensure comfortable charter vacations, including . She also carries an impressive collection of toys as listed below.

ROYAL PELAGIC AMENITIES & TOYS

For a full up-to-date list of leisure facilities or amenities onboard Motor Yacht Royal Pelagic please contact your Yacht Charter Broker prior to booking your vacation. If there is a particular water toy that you would like, but it is not listed, then it may be possible to rent this equipment for you.

MORE TENDERS, TOYS & YACHT AMMENITIES INFO:



[CLICK HERE](#)

CHARTER ROYAL PELAGIC

If you are interested in chartering ROYAL PELAGIC please contact your yacht charter broker for more information about booking a luxury charter vacation on board this Martinolich Sb superyacht .