

VICTORIA DEL MAR

Experience the exceptional level of service on **VICTORIA DEL MAR**, accommodating 10 guests in 5 staterooms.



Let's Play! Watersports Abound.





Luxuriate on the sun deck...
Jacuzzi aft with a large sunpad
area and comfortable seating
with casual dining forward.



SUN DECK



BRIDGE DECK AFT

The bridge deck aft is ideally suited for
alfresco dining under the stars.



MAIN DECK AFT



MAIN SALON



DINING SALON



SKYLOUNGE



The interior offers gracious living on the water. The main salon and skylounge feature ample comfortable seating areas, complete entertainment and a wet bar on both levels.

The formal dining salon sets the scene for exquisite culinary sensations.

MASTER STATEROOM



MASTER BATH

Each stateroom is equipped with a full entertainment system, spacious closets and desks. The master stateroom offers a King bed with his and hers ensuite bathroom with central shower.

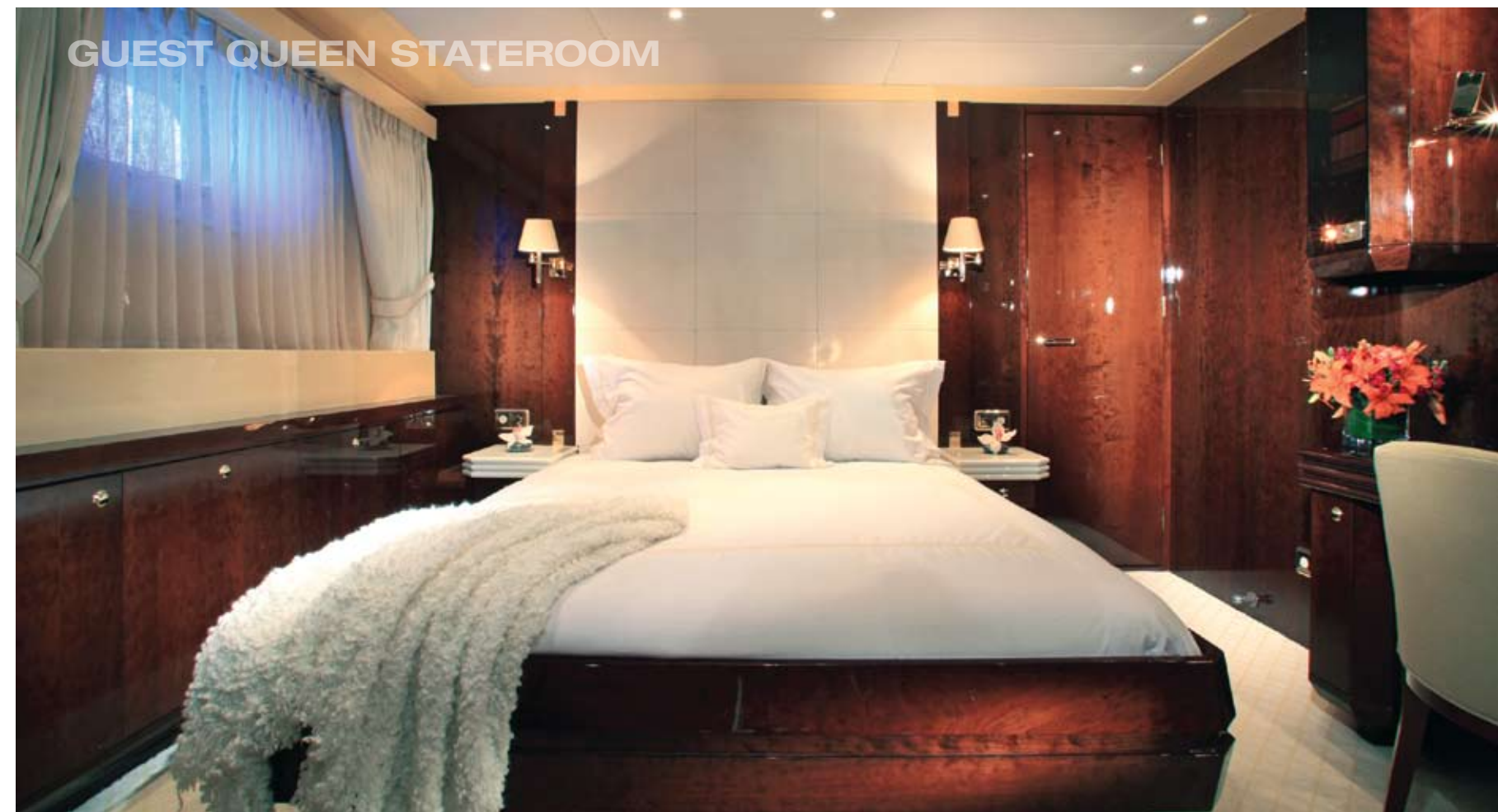
Guests receive the VIP treatment with four tastefully appointed staterooms each with ensuite bath.

GUEST STATEROOM



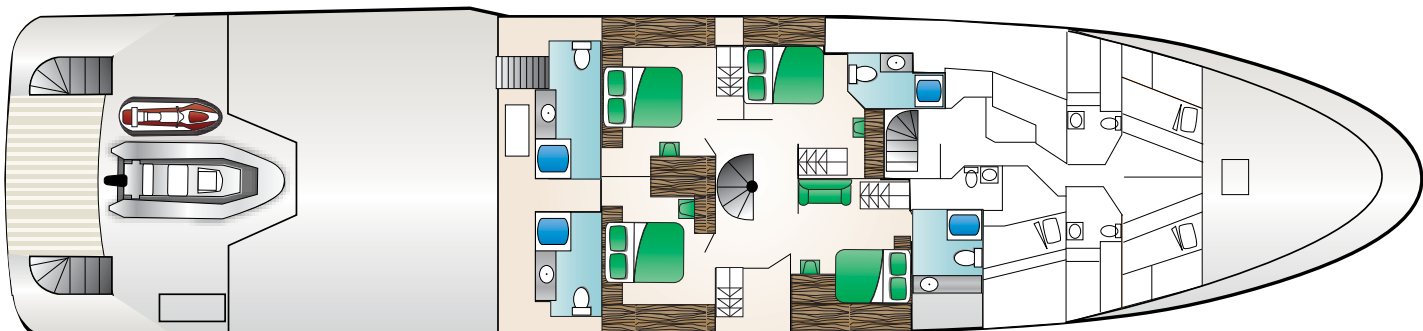
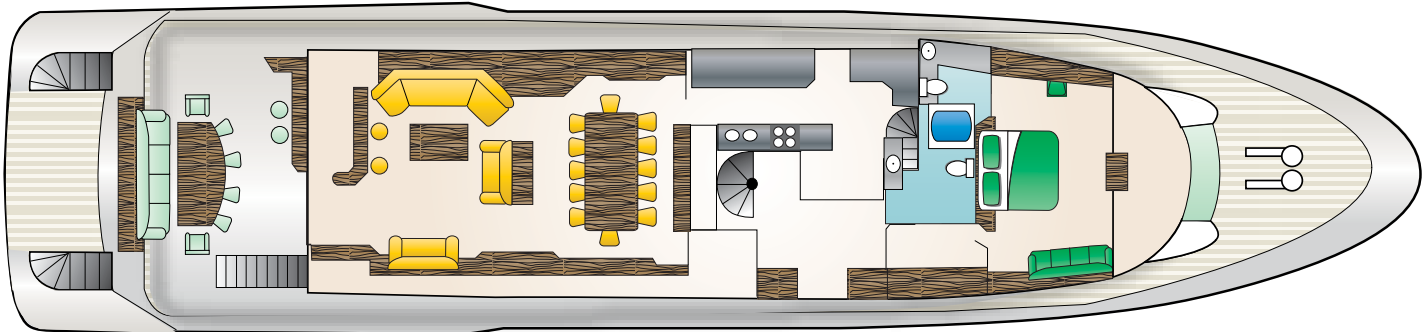
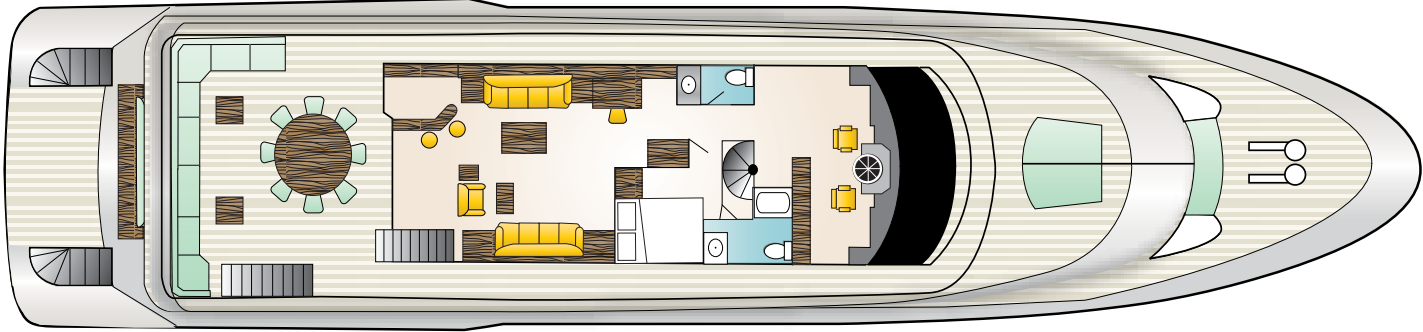
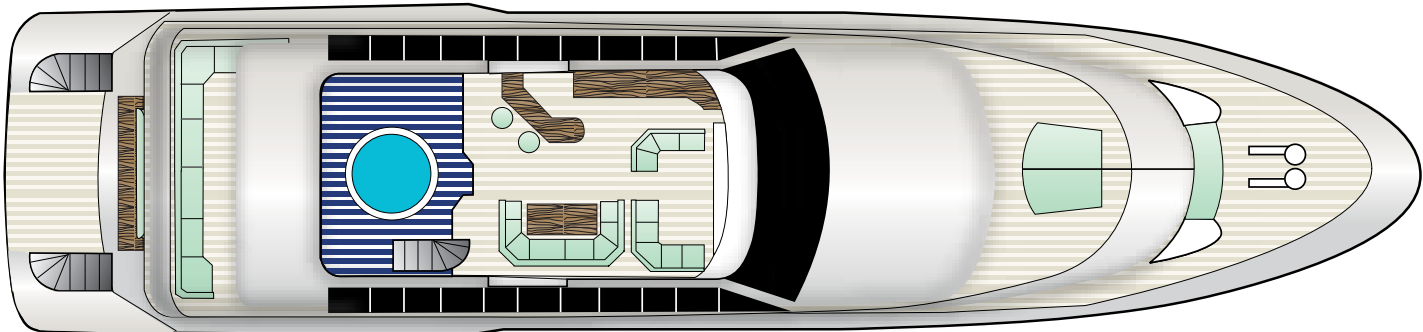
GUEST BATH

GUEST QUEEN STATEROOM





Photos: Jim Raycroft | Design and Production: IYC, Fort Lauderdale, FL 0209



SPECIFICATIONS:
10 guests in 5 staterooms

Builder: Moonen
Year: 2001/2008
Length: 121'
Beam: 26'10"
Draft: 8'
Speed: Cruise 10 kts / Max 12 kts
Engines: 2 x Caterpillar 3412 DITA

AMENITIES:
32' Century towed tender/250 HP
15' Nautica/60 HP
3-person waverunner
2 Kayaks, assorted towables
Waterskis
Beach gear
Satellite television

