



Titania

DESTINATION – ANYWHERE

DESIGN: JACKSONHAMMOND.CO.UK

Titania

DESTINATION – ANYWHERE



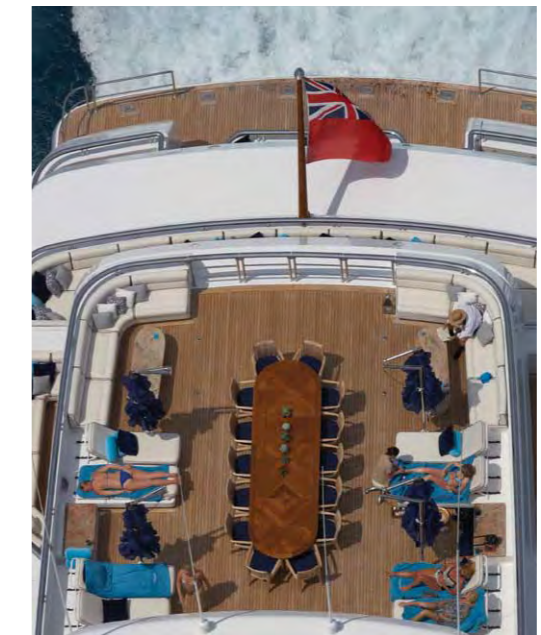


ONE OF THE MOST FEATURE RICH, FUN, LUXURY YACHTS ON THE OCEAN

- Two owners' suites
- Five further cabins, two of which have pullmans
- Extensive Aqua Park, Beach Club and sauna
- Nightclub at sea level
- Two Spa decks with fabulous gym, pool and massage room
- A garage full of toys
- Food range from French to Thai
- A full time personal trainer, masseur and beautician
- Total entertainment centre based around a Grand Piano



RELAX IN LUXURY



BEACH CLUB AND AQUA PARK



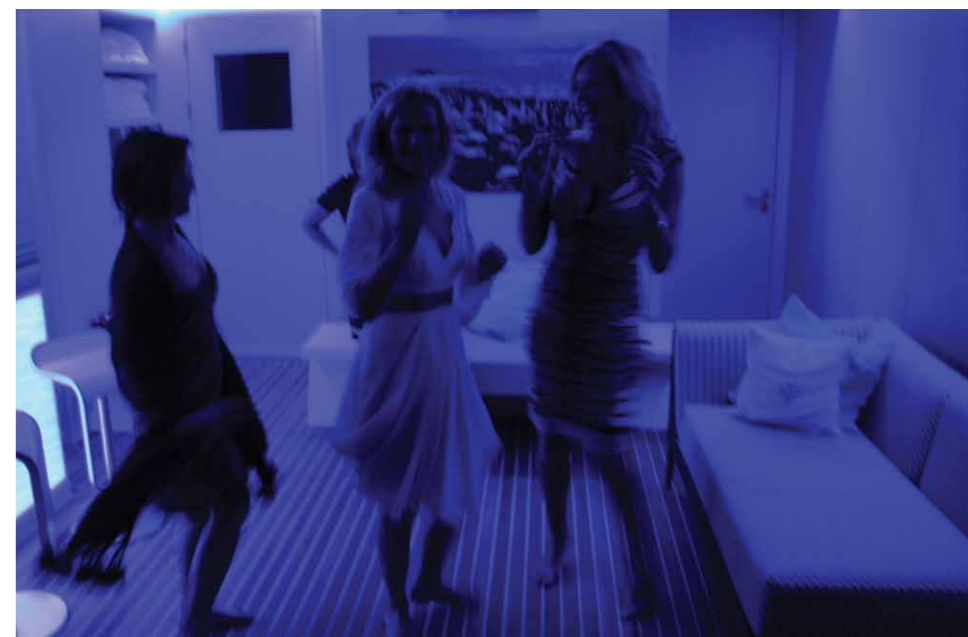
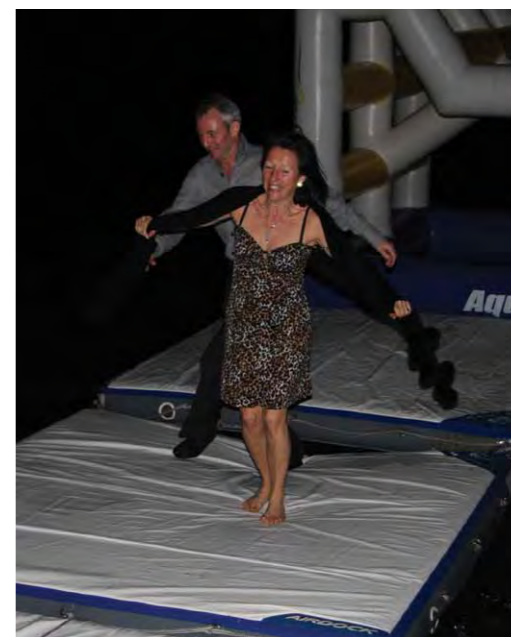
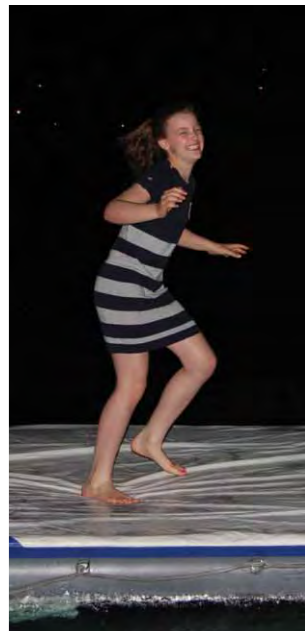
YOUR VERY OWN AQUA PARK

The Beach Club, combined with the Aqua Park, is perfect for some great family fun.





BEACH CLUB TO NIGHTCLUB





A PROFUSION OF DINING EXPERIENCES



EXQUISITE FOOD, AS TITANIA DESERVES

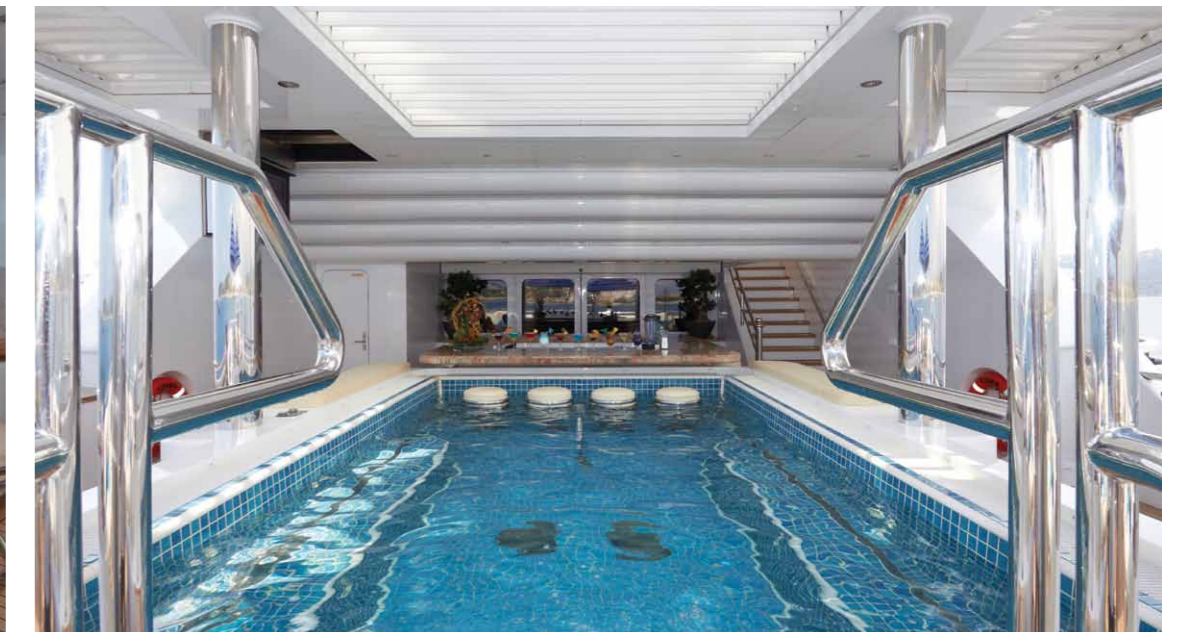
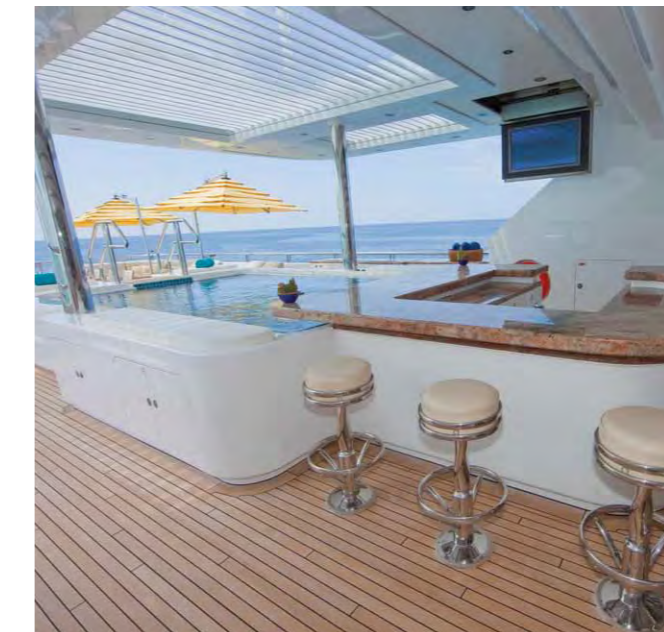
The chef and crew will ensure your every requirement is met when it comes to fine dining. Special diets or healthy menus are all catered for on Titania.







POOL DECK



LOUNGE AREAS



EXCELLENT FOR
ENTERTAINING

Entertain your guests in luxurious surroundings. Titania has spacious lounge areas and a full size Grand Piano for those special parties and evenings.



ONE OF TWO
OWNER'S CABINS

The owner's suite includes
an office and a spacious
viewing lounge.



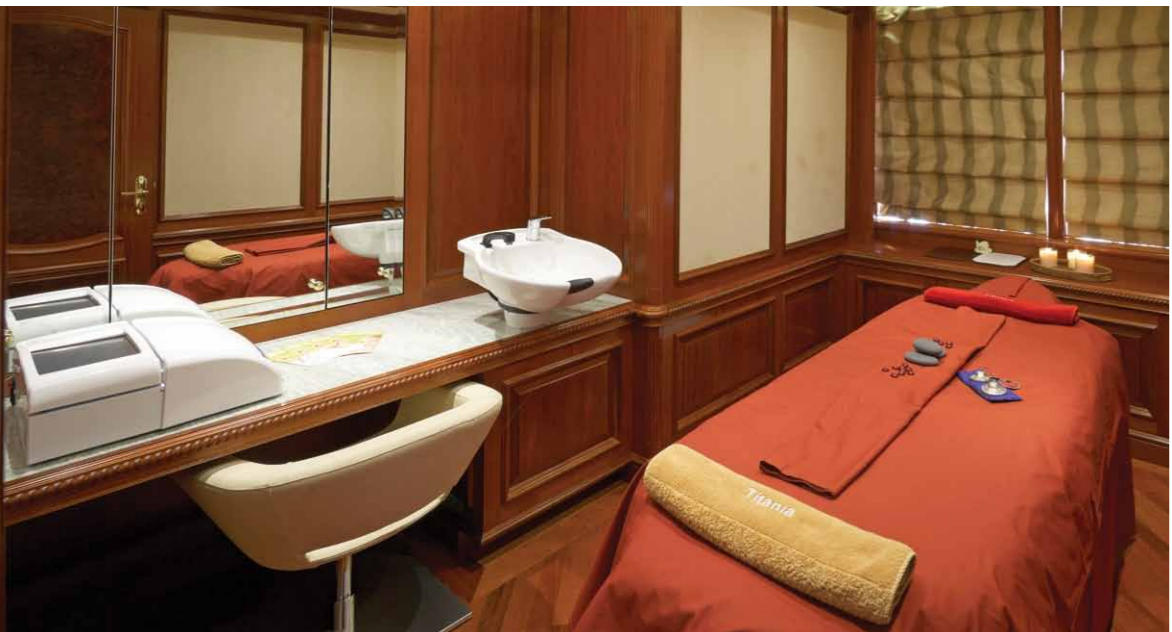
PANORAMIC
OWNER'S SUITE

Wake up to the most amazing panoramic views in the second owner's suite.



ACCOMMODATION





STAY FIT AND
FEEL GREAT

The gym contains the very best in fitness equipment and on board is your own personal trainer, masseur and beautician.

TECHNICAL SPECIFICATION

TOP DECK



SUN DECK



BRIDGE DECK



MAIN DECK



LOWER DECK



TECHNICAL SPECIFICATION

SPECIFICATIONS

Length:	72m / 236'
Beam:	12.8m / 42'
Draft:	3.7m / 12'
Year:	2006
Builder Interior:	Lurssen
Designer:	Francois Zuretti
Classification:	Lloyds Register + MCA
GT:	1894
Flag:	Isle of Man

MACHINERY

Main Engines:	2 x Caterpillar 3512B Dita 1850 hp
Generators:	3 x 3406 Caterpillar Caterpillar C9 Emergency Generator
Stabilizers:	Quantum Zero Speed

CAPACITIES

Fuel (Max):	196,000l
Fresh Water:	28,400l
Max Speed:	16 knots
Cruising Speed:	14 knots
Fuel consumption:	400lph

ACCOMMODATION

Guests:	12 guests in 7 double cabins, 2 with pullman berths
Crew:	20
Entertainment:	Kaleidescape video on demand Creston controls LCD / Plasma televisions throughout
Communication:	V-Sat voice and Data Satcom and cellular facilities WiFi
Special Features:	Full spa and massage facilities Air conditioned gym with fitness instructor Beach Club with sauna
Tenders and Toys:	8m Royal Denship Open Tender 260hp 6.8m Novurania Launch 260hp diesel Nautica rescue boat 60hp Yamaha Waverunner Kawasaki SX-R 800 2 Sea-Doo RXP waverunners 2 sailing dinghies Kayaks Full dive room Snorkelling equipment Inflatable Water Park Zorb Bicycles