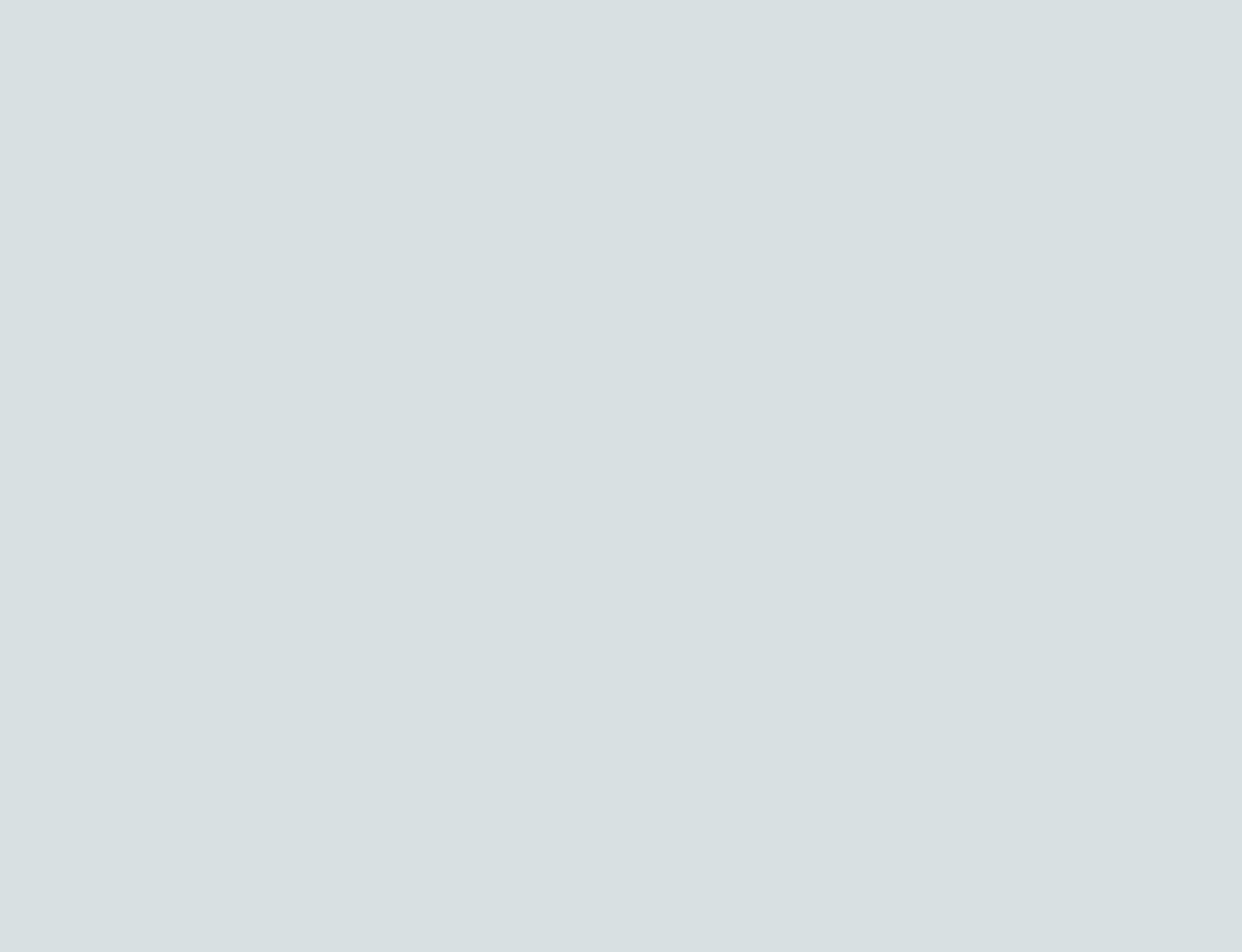


SUNRISE

Some yachts just shine







Broaden your horizons.

Sunrise is 52.8 meters of wide open living. Oceanco have perfected the art of creating spacious, comfortable deck areas ideal for relaxing al fresco. Guests gather on the sociable sundeck with bar, dining table, sunloungers and one of the yacht's two jacuzzi spa pools.





Admire the view.

Whether you're dining on the bridge deck or sipping champagne in the sun deck's spa pool, the build quality and the thoughtful attention to detail is evident whichever way you look.



Bright & beautiful.

The limed oak interior and huge, deep windows invite the outside in, blurring the edges between interior and exterior. The use of glass and mirrors reflects the light through the sky lounge and bar and down the stairs to the main deck.



Sunset from the main saloon.



Formal elegance sets the tone as evening descends. The dining room and main saloon offer the highest levels of comfort for entertaining in style.





Peaceful seclusion.

A truly exceptional feature, the split-level, full beam Owner's suite offers outstanding space and privacy. The 180° views through the one-way glass are spectacular. The dedicated Owner's deck outdoors provides another dimension of luxury and privacy complete with private spa pool.



Stairs lead down to the Owner's private study to starboard.
The vast bathroom is situated on the port side with a
well-appointed dressing room in between.



Calm and comfortable.

Natural light flows throughout the five en suite guest staterooms. Three double and two twin staterooms provide a flexible and accommodating layout; a large flat screen cinema, which can also be used as a library or study, complete the well-appointed arrangement. All guest areas enjoy Kaleidescape on-demand entertainment systems, i-Pod docks and wireless internet access throughout.



Sports, toys, games. Get ready...

The yacht's two main tenders are secured on the main deck aft, with jet skis and a wide array of water toys and inflatables stowed in the garage.



Specifications.



DIMENSIONS

LOA: 52.8m (173.2ft)
LWL: 47.57m (156ft)
Beam: 9.45m (31ft)
Draft: 3.81m (12.5ft)

CONSTRUCTION & DESIGN

Year Built: 2000
Builder: Oceanco
Navel Architect: Richard Hein
Interior Design: The A Group
Construction: Steel hull, aluminium super structure, teak laid decks
Classification: Lloyds +100A1, MCA Compliant

MACHINERY

Main Engines: 2 x MTU 12V 396TE74 1260 kW
Generators: 2 x MTU / Mercedes 8V183 142 kW
Speeds & Fuel Consumption:
Economical: 11.5 knots (250 litres/hour)
Medium Cruise: 12.5 knots (320 litres/hour)
Fast Cruise: 14.5 knots (450 litres/hour)
Maximum: 16.1 knots (730 litres/hour)
Range: 5100 NM at 11.5 knots (Economical Speed)

COMMUNICATIONS & NAVIGATION EQUIPMENT

A comprehensive suite of navigation and communication equipment / GMDSS equipped and certified.

Hard wired and wireless networks throughout.

ENTERTAINMENT

Full Kaleidescape system with Creston controls in all guest and crew areas with flat screens throughout.

Jacuzzis on Owner's deck and sun deck: Scandiaqualine

Barbeque:
Solaire Infrared Gas Grill

TENDERS

1 x 23 ft Novurania 700D Launch
1 x 23 ft Tige Wakeboard boat

WATERSPORTS EQUIPMENT

2 X Sea-Doo Jet Skis
A wide range of watersports equipment including: wakeboard, kneeboard, water skis, towable water toys, snorkelling and fishing gear.

ACCOMMODATION

12 Guests. 13 Crew.

Master Suite

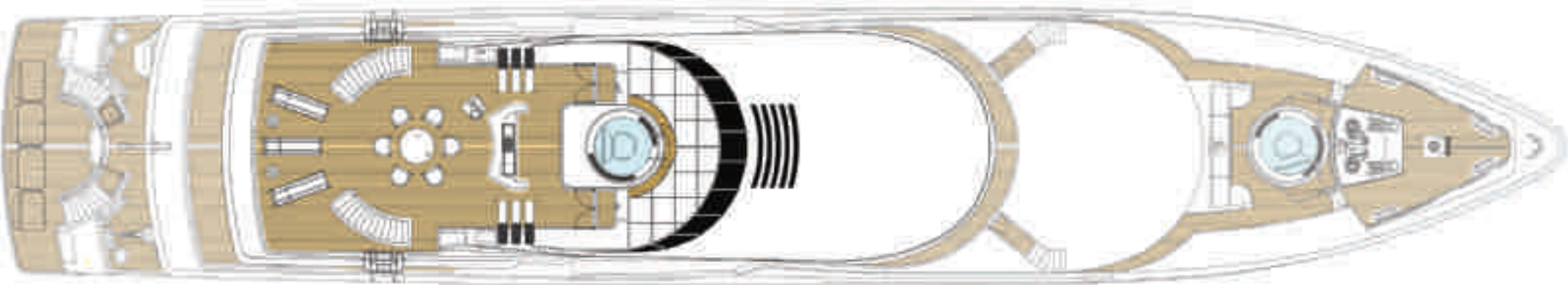
Master stateroom with private deck and jacuzzi.
En suite bathroom with jacuzzi bath and shower.
Adjoining dressing room and private office.

Guests

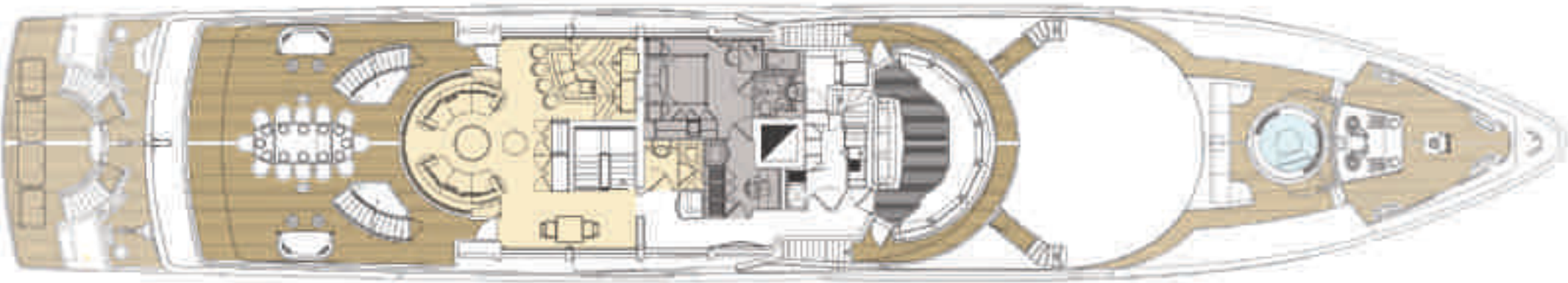
3 x Double guest suites each with en suite bathroom.
2 x Twin guest suites each with en suite bathroom.

All particulars believed to be correct but cannot be guaranteed.

Deck plans.

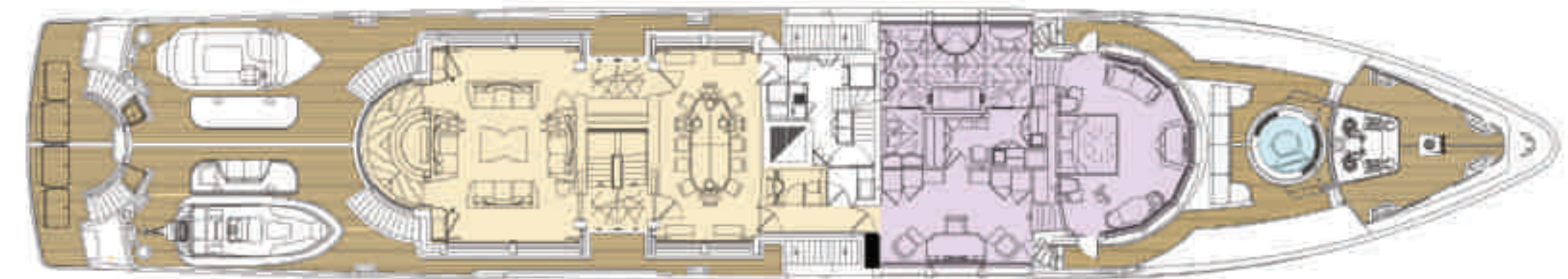


Sun Deck

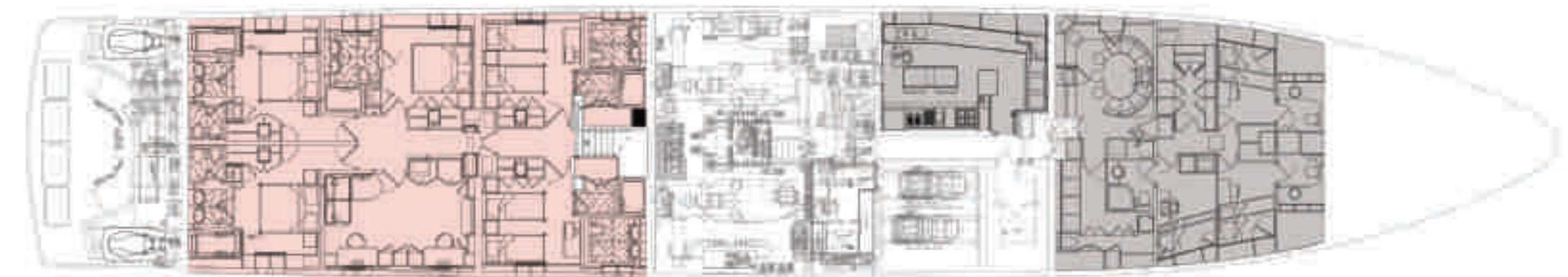


Bridge Deck

Key: Living Accommodation  Owner's Suite  Guest Accommodation  Crew Accommodation  Jacuzzis 



Main Deck



Lower Deck

SUNRISE
to sunset, another perfect day.



