

SQUALO

L U X U R Y C H A R T E R Y A C H T

































KEY FEATURES

- Like new yacht - 2018
- Sporty and sexy design and interior
- Towed tender
- Versatile accommodation for 8 guests
- Sprawling flybridge

TENDERS & WATER TOYS

- 23' 2018 Boston Whaler 230 Vantage with a Mercury 350, SureShade extended awning, seating for 11, tow post, rod holders, freshwater shower
- 2018 Yamaha FX SVHO Cruiser WaveRunner (3 seater)
- 2 x SeaBobs
- 2 x paddle boards
- Inflatable tow tube
- Snorkel gear
- Wakeboard, kneeboard
- Fishing rods



SPECIFICATIONS

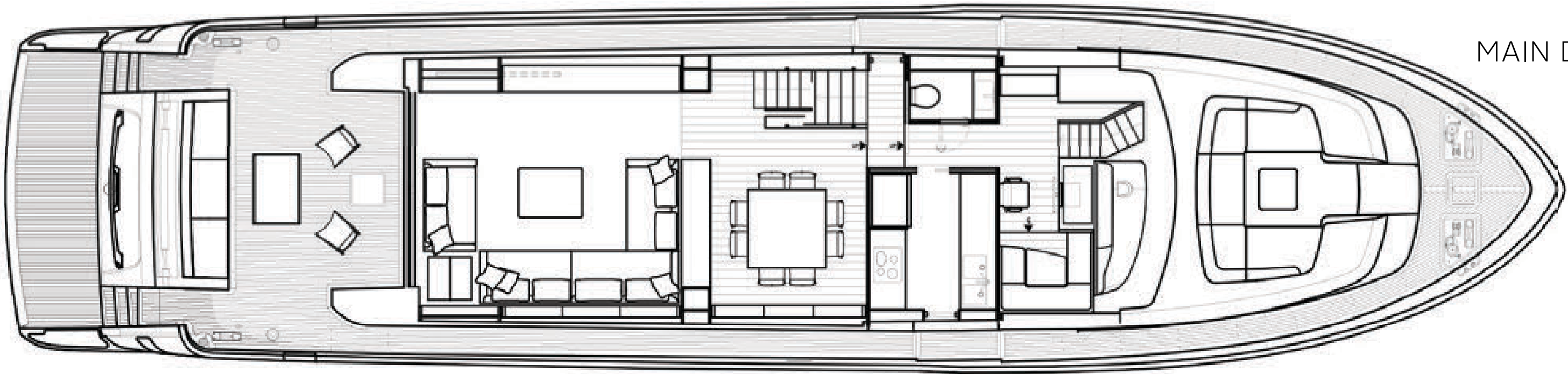
Accommodates	8 Guests in 4 Staterooms
Arrangements	1 King, 1 Queen, 2 Twins (Convertible)
Length	87’10” (26.76m)
Beam	21’ (6.4m)
Draft	5’ 7” (1.7m)
Year / Refit	2018
Builder	Sanlorenzo
Interior Designer	Marty Lowe
Engines	2 x MTU 12V200 M96L engines
Economical Cruising Speed	11 knots
Cruising Speed	20 knots
Max Speed	30 knots
Fuel Consumption	34 US Gall/Hr
Range	735 nm
GRT	77 GT



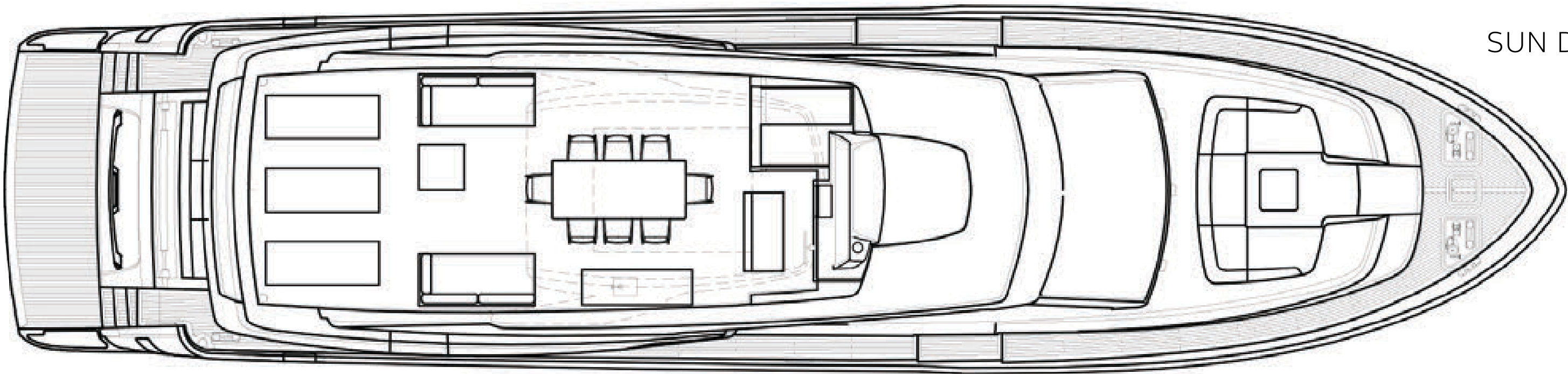
GENERAL ARRANGEMENT



LOWER DECK



MAIN DECK



SUN DECK

SQUALO

C O N T A C T Y O U R C H A R T E R B R O K E R