



**" SPIIP "**  
CNB 86'









" If she was a car she would be a last generation S Class Mercedes 500 :  
Modern, fast, comfortable, safe, built for long journeys all around the world. "







Built by the Shipyard C.N.B. in Bordeaux, this very modern sailing yacht was launched in June 2009. Designed for offshore sailing, her owner is an experienced yachtsman who requested a sensitive vessel which is pleasant to sail. The rigging and mast are made from carbon and the sails in kevlar which increases her draft from 2 to 4m.

















Guided by the owner's desire for a stylish and elegant yacht, the roof was designed with very clean long lines and large windows. She has a long waterline length, large sail area and a lifting keel which increases her draft from 2 to 4m.





The helm stations are offset, giving the helmsman perfect views over the headsails. The result is an excellent off-shore yacht which is sensitive at the helm without compromising performance.













The panoramic roof houses a very spacious raised saloon. Accommodation on board is ample for a boat of this size, including one master suite and a further two cabins for guests and two for crew.





#### Master Cabin

The spacious master cabin is situated at the rear of the ship. The large double bed is flanked by bookshelves, with a sofa and a desk on either side of the room. Spotlights and porthole windows provide ample lighting for the interior space with secondary lighting for a more intimate setting. The master suite has an en-suite bathroom.





















### Guest Cabins

The main guest cabin has a double bed with the ability to be split into two singles. Intelligent design incorporates efficient storage space, mood lighting, and feedles on the furniture. Each guest cabin has its own ensuite bathroom. The interior is clad in real wooden oak panelling and oak floors throughout.













#### Taking a dip

The recreational space at the rear of the boat incorporates a discrete folding swimming platform, titanium ladder, hot water shower, and ample decking for sunbathing.









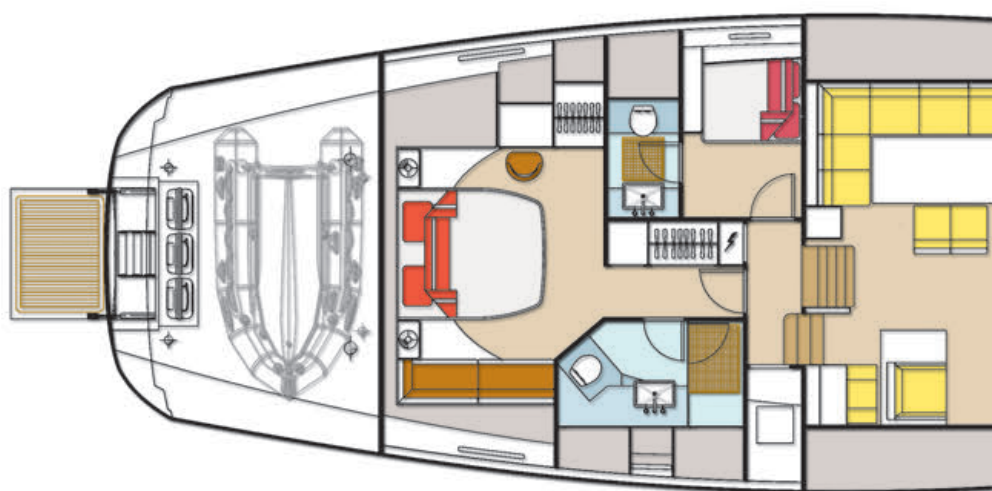
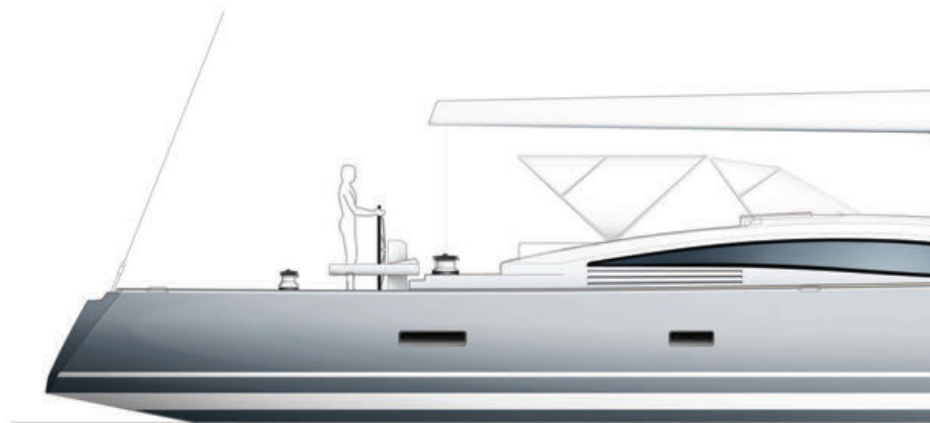




#### The galley

The galley is equipped with two industrial fridges and freezers. The preparation surfaces are made from stainless steel to maintain cleanliness. And part of the 35m carbon mast is an eye-catching piece in the corridor outside the galley leading to the larger guest cabin





#### Technical specifications

LOA (m) : 26.32

LWL (m) : 23.70

Beam (m) : 6.54

Draft (m) : 2.0/4.0

Displacement-lightship (t) : 62

Sail area upwind (m<sup>2</sup>) : 385

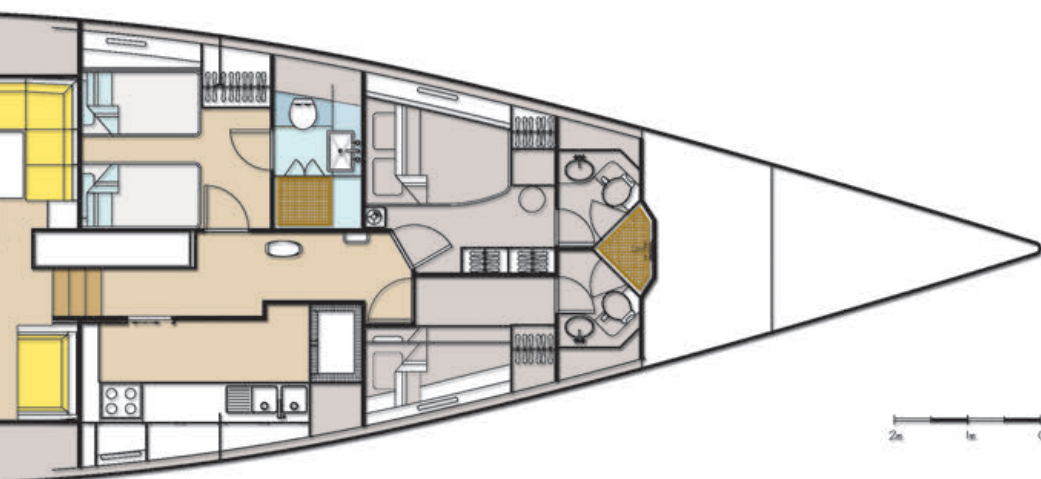
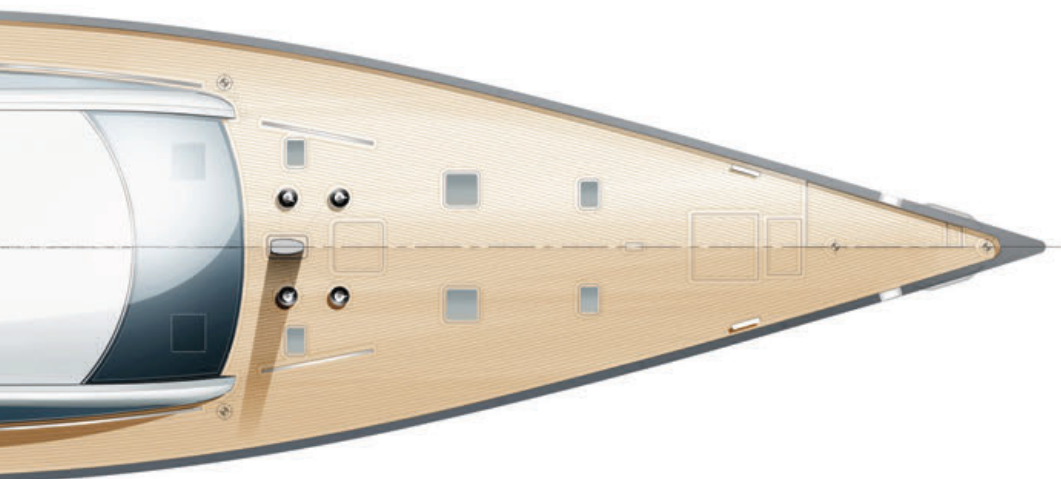
Engine power (Hp) : 220

Fuel (l) : 3500

Fresh Water (l) : 1950

Construction material : Alu.Alloy + Composite





Naval Architecture : Philippe Briand  
 Exterior design : Philippe Briand  
 Interior design : Jean Marc Piaton  
 Builder : CNB (Construction Navale Bordeaux)  
 Delivered : 2009



