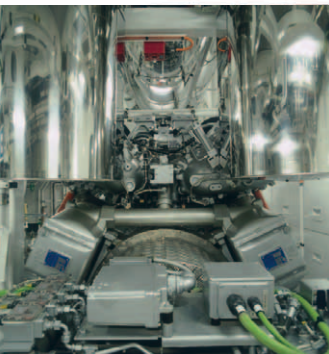
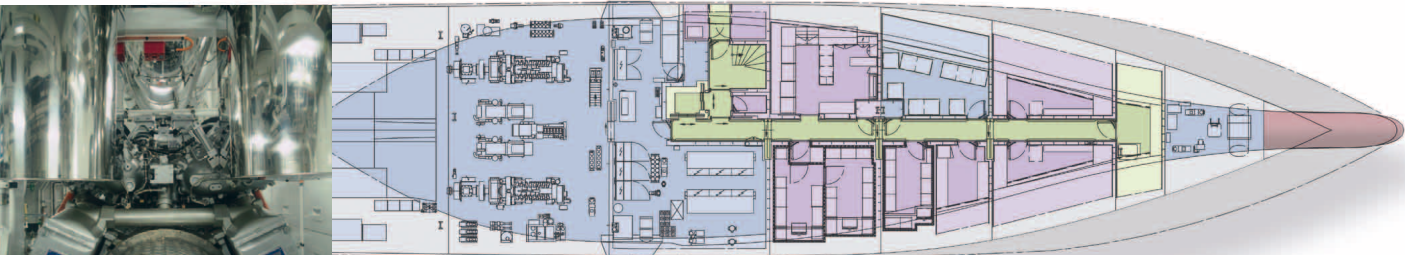
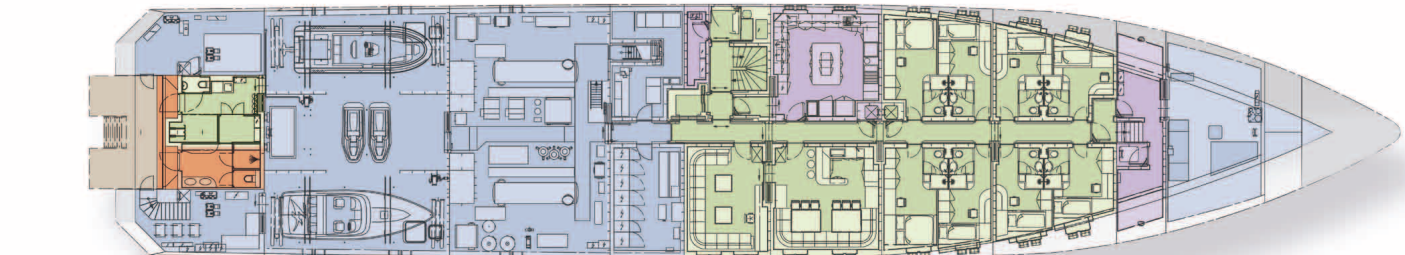
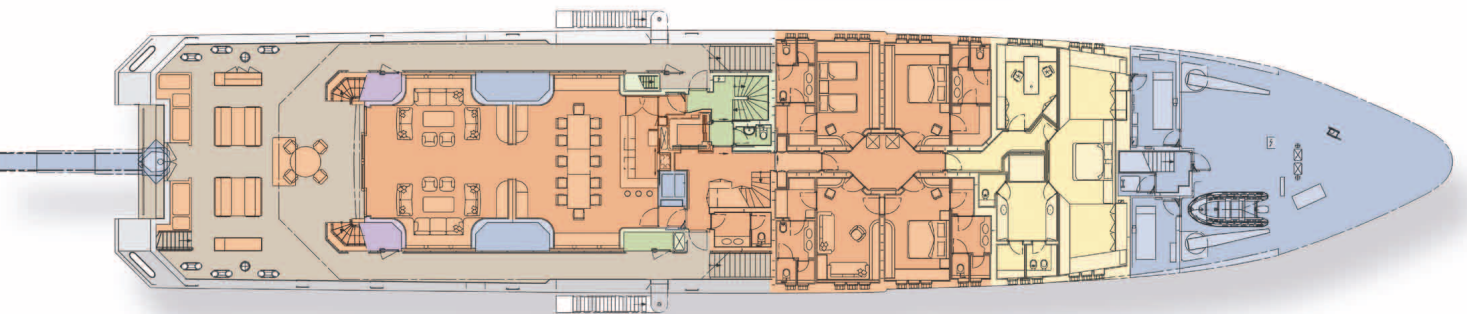
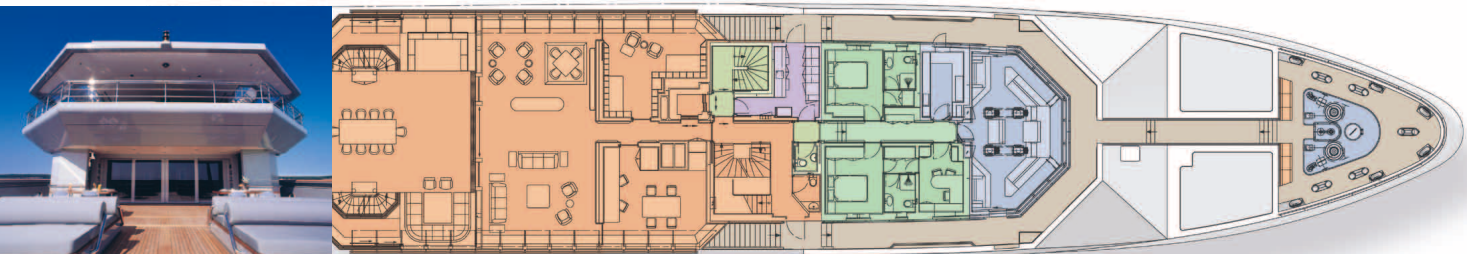
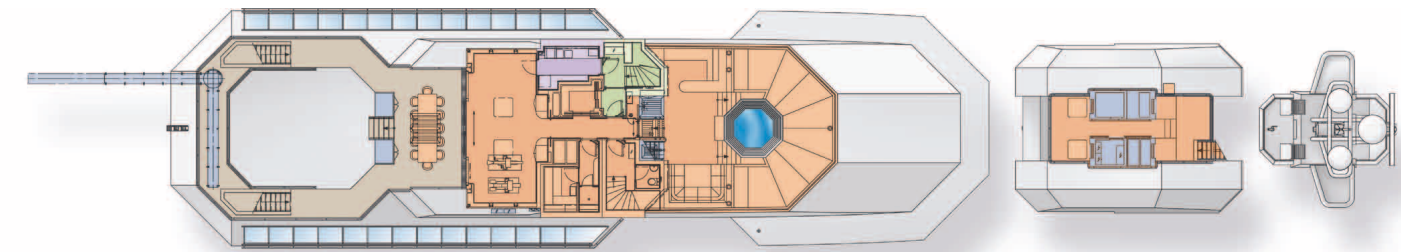


Specification MY “SKAT”

Builder/Year	Lürssen Yachts, 2002	Main engines	MTU – 16V 4000 M70, 2 x 2.000 kW/ 2x 2.717 hp
Designer exterior	Espen Oeino	Generators	MTU – 2 x 281 kW, 1 x 212 kW
Designer interior	Marco Zanini	Emergency generator	1 x 125 kW
Length over all	70,70 m / 231'10"	Fresh water makers	2 x HEM 30/4000 - 15.000 l / day
Length waterline	62,50 m / 205'	Fresh water capacity	62.000 l
Beam	13,50 m / 44'3"	Fuel capacity	218.000 l
Construction material	hull: steel / superstructure: alu	Accommodation	Owner / Guests: 5 cabins for 10
Speed	17 knots max.		Crew: 18, Staff 2
Range	3500 nm at 15 knots		



LÜRSEN

SKAT

Fr. Lürssen Werft GmbH & Co. KG  
Zum Alten Speicher 11 · D-28759 Bremen  
Tel. + 49 421 6604 166 · Fax + 49 421 6604 170  
E-mail [yachts@luerssen.de](mailto:yachts@luerssen.de) · [www.luerssen.de](http://www.luerssen.de)





Reduced to the absolute essentials, minimalistic, masculine, navy-like – these are some of the comments used to describe SKAT by the public. It is the natural consequence of letting function determine the clarity of shape, which is truly fascinating. There are no arbitrary lines.

Striking shadows of grey are created, each one of them unique. The long rows of glass-house-like windows, not seen so far in yacht building, flood her with light in such a way that was unthinkable before.

True design should awaken an emotion – either you love it, or you hate it.

As proof thereto, and as the ultimate accolade by its peers, SKAT was awarded the Superyacht Design Award.

