



sierra romeo





# sierra romeo MAIN DECK



The deck areas of **sierra romeo** are wonderfully spacious. Enjoy breakfast, lunch or dinner on the aft deck with a different view every day.







# BRIDGE DECK sierra romeo



Cool down on the bridge deck, choose your favourite spot to relax or savour a dinner under the stars.



# sierra roméo SUN DECKS



Lounge on the sun pads forward or enjoy the privacy and splendid views from the sundeck.





# sierra roméo MAIN SALOON & DINING ROOM



The chic formal saloon and dining, located on the main deck, is an ideal place to have a drink, and for a cosy dinner with friends.









# UPPER SALOON sierra roméo



The sky lounge boasts a state of the art entertainment system and high definition projector. The perfect place to retire early, sink into the sofas and catch a movie or just to sit, chill out and read a good book.



# sierra romeo MASTER CABIN



The full beam Master cabin is located on the main deck forward, for absolute privacy. This luxurious cabin provides his and hers ensuite facilities, a large walk-in wardrobe, settee and writing desk, and a full entertainment system.









The VIP cabin, located on the lower deck benefits from the full beam of the yacht.



# sierra romeo TWO DOUBLE CABINS



The two stylish double cabins are each uniquely decorated.





sierra romeo

# TWIN CABINS





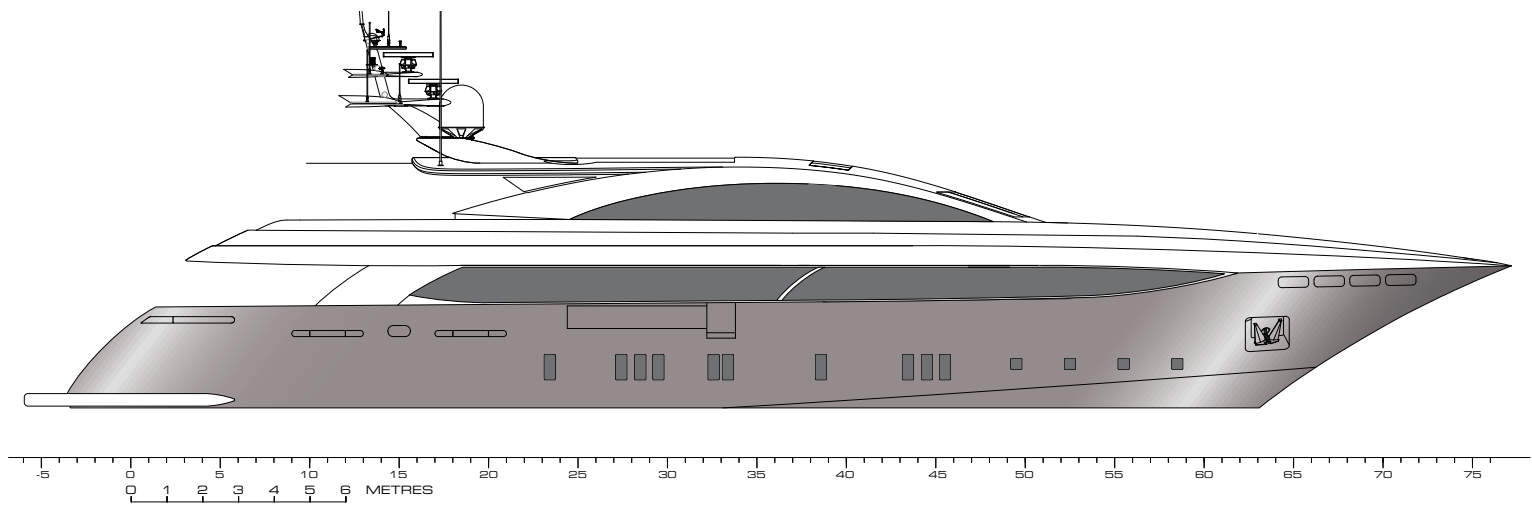
The two twin cabins can be set up for children and each cabin has an additional Pullman berth offering flexibility with the sleeping arrangements.



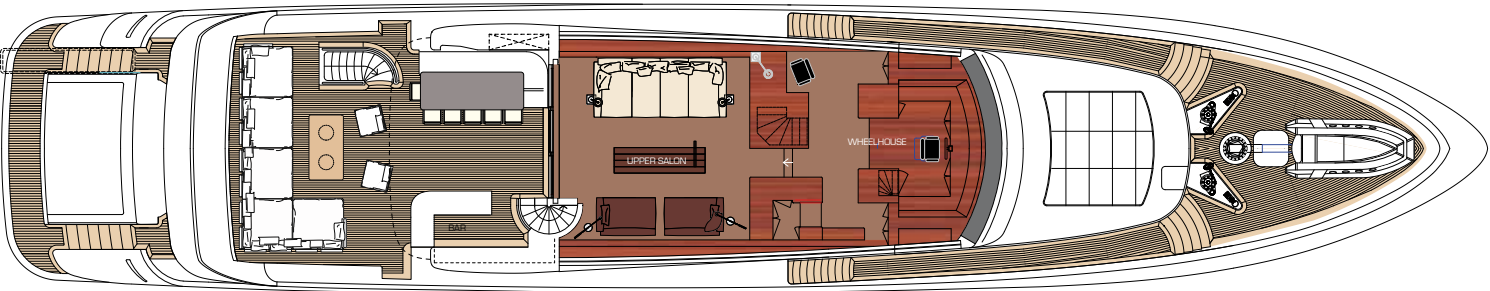
sierra romeo



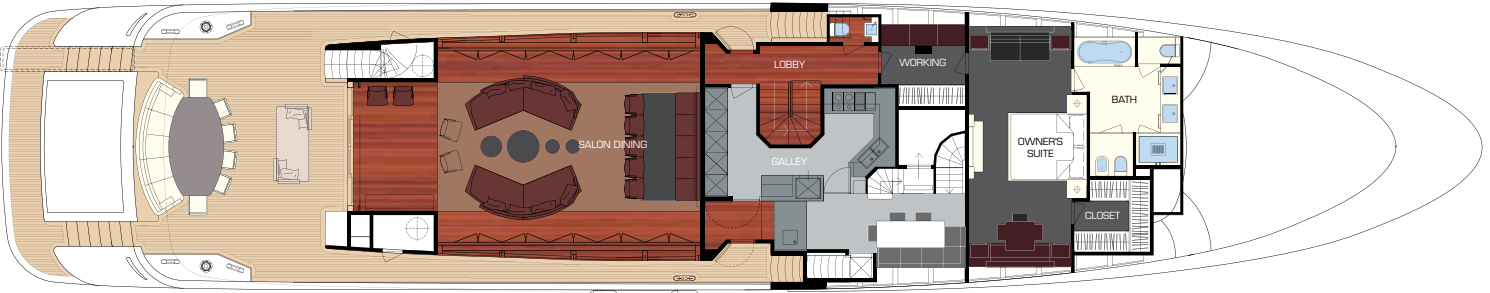
At 41.5m, **sierra romeo** is superbly streamlined, sleek and luxurious. Capable of cruising at speeds of around 18 knots she will quickly and comfortably take you to unforgettable destinations.



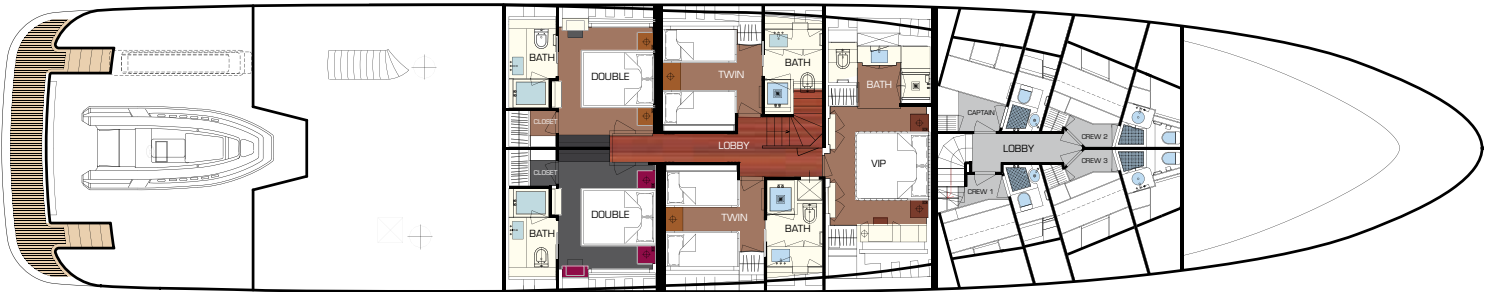
BRIDGE DECK



MAIN DECK



LOWER DECK





SPECIFICATIONS

Length:	41,50m (136' 1")
Beam:	8,10m (26' 6")
Draft:	2,50m (8' 2")
Year Built:	2007. Refit 2010. Refit 2013
Builder:	Mondomarine
Number of Cabins:	6
Total Guests (Sleeping):	12
Total Guests (Cruising):	12
Cabin Configuration:	( 4 Double, 2 Twin)
Total Crew:	8
Flag:	Malta
Hull Construction:	Aluminium
Hull Configuration:	Semi displacement
Air Conditioning:	Yes
Stabilizers at Anchor:	Yes

ENGINES & GENERATORS

2 x 2285 HP MTU main engines	
2 x 80 KW Northern Lights generators	
Fuel Consumption:	750 Litres/Hr
Range:	
Gross Tons:	289
Max Speed:	16 knots
Cruising Speed:	15 knots

COMMUNICATIONS

Sat phone/fax  
V-Sat and cellular communication facilities  
Broadband Internet access and wi-fi network

TENDERS & TOYS

1 x 5.4m Novurania w/200hp Volvo Penta  
1 x 3.6m Novurania w/ 40hp Yamaha  
2 x 3-seater Seadoo GTI 155HP waverunners  
2 x Seabobs  
Tubes  
Water skis - adult and child  
Banana Donuts  
Kneeboard  
Wakeboard  
1 x Canoe  
Windsurfer with adult and junior rigs  
Fishing  
Snorkeling gear - for adults and children

GUEST ACCOMMODATION

On main deck:

Master cabin with ensuite dressing and bathroom

On lower deck:

Full beam VIP cabin located forward  
2 x twin cabins amidships each with additional Pullman berth  
2 x double cabins aft  
All cabins have ensuite facilities.

AUDIO VISUAL EQUIPMENT AND DECK FACILITIES

LCD monitors with home theatre system in all cabins, upper deck and main saloon  
CD with ipod  
DVD with surround sound and option of various movies from a central server.  
Wide selection of movies including children's movies.  
Sat TV in restricted areas  
Assorted children's games  
1 x playstation

