

SERENITY

LENGTH 72 m

BEAM 13.80 m

DRAFT 2.70 m

BUILT 2003

RECONSTRUCTION 2017

BUILDER Austal

FLAG Greek

NUMBER OF GUESTS 36

NUMBER OF CABINS 14 + 1 Staff





A VIEW
FROM
ABOVE!

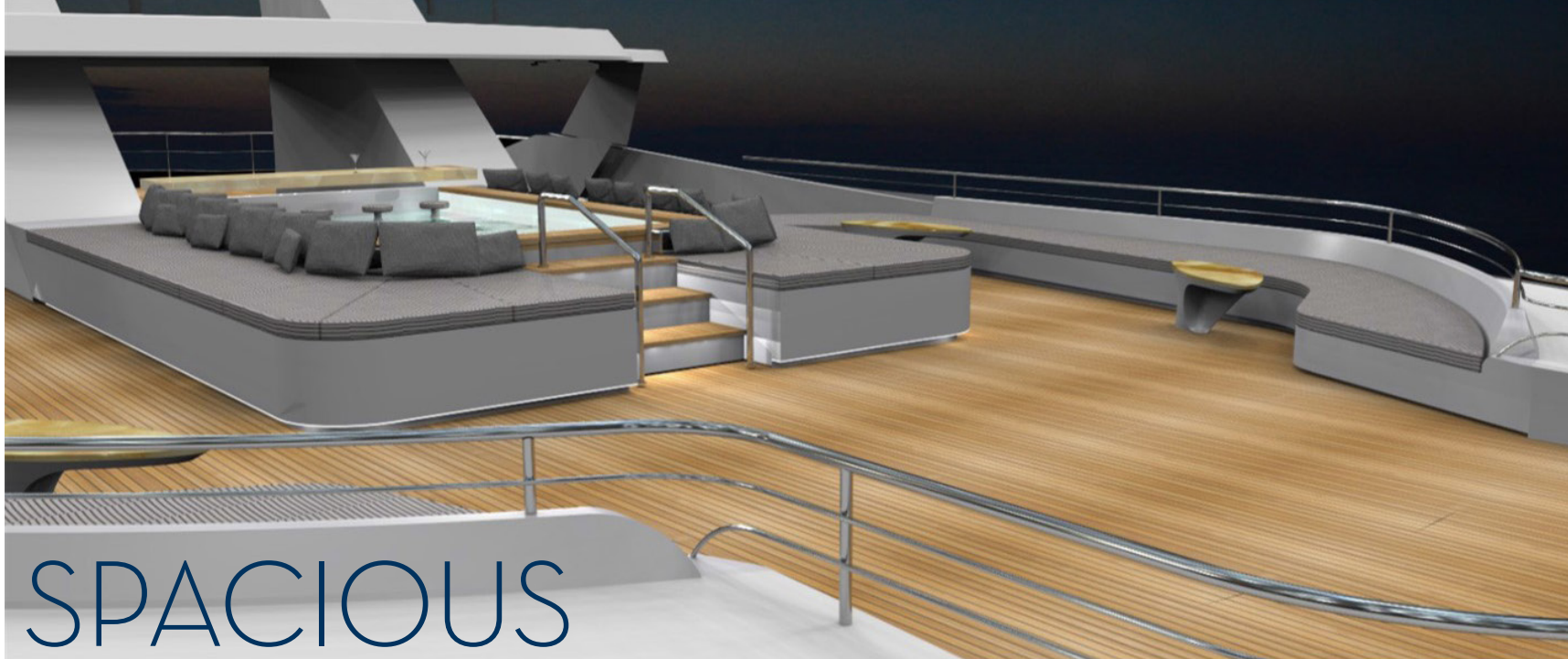


SERENITY



Extraordinary PANORAMIC VIEWS

SERENITY



SPACIOUS

OUTDOOR AREAS





SERENITY

MAIN SALON



Understated ELEGANCE & SIMPLICITY



Dining AREA

SERENITY



SERENITY



CINEMA ROOM



VIP SUITE

VIP CABIN

SERENITY



GUEST CABIN



TWIN CABIN

ART IS THE FOOD OF THE SOUL

SERENITY

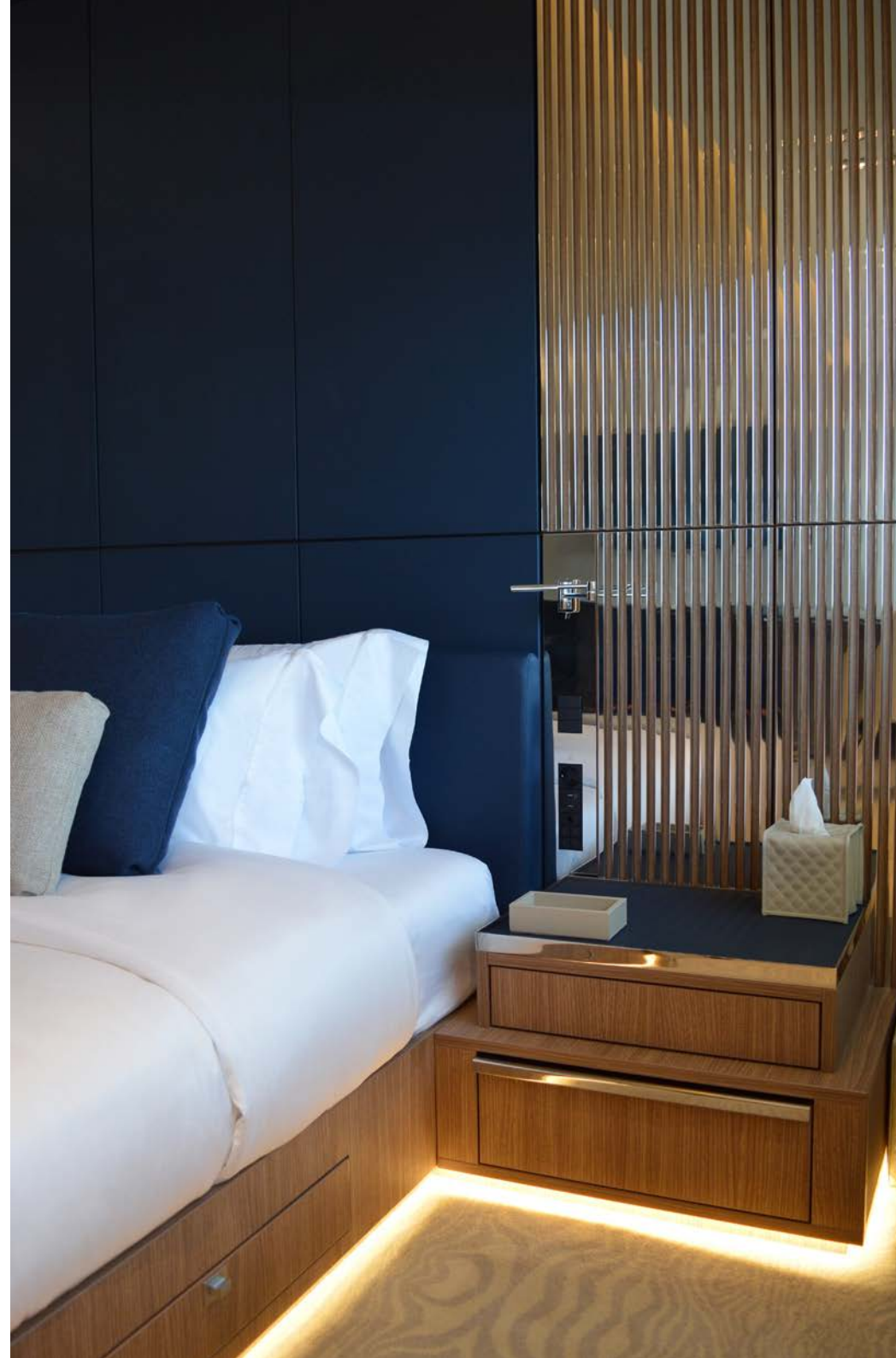




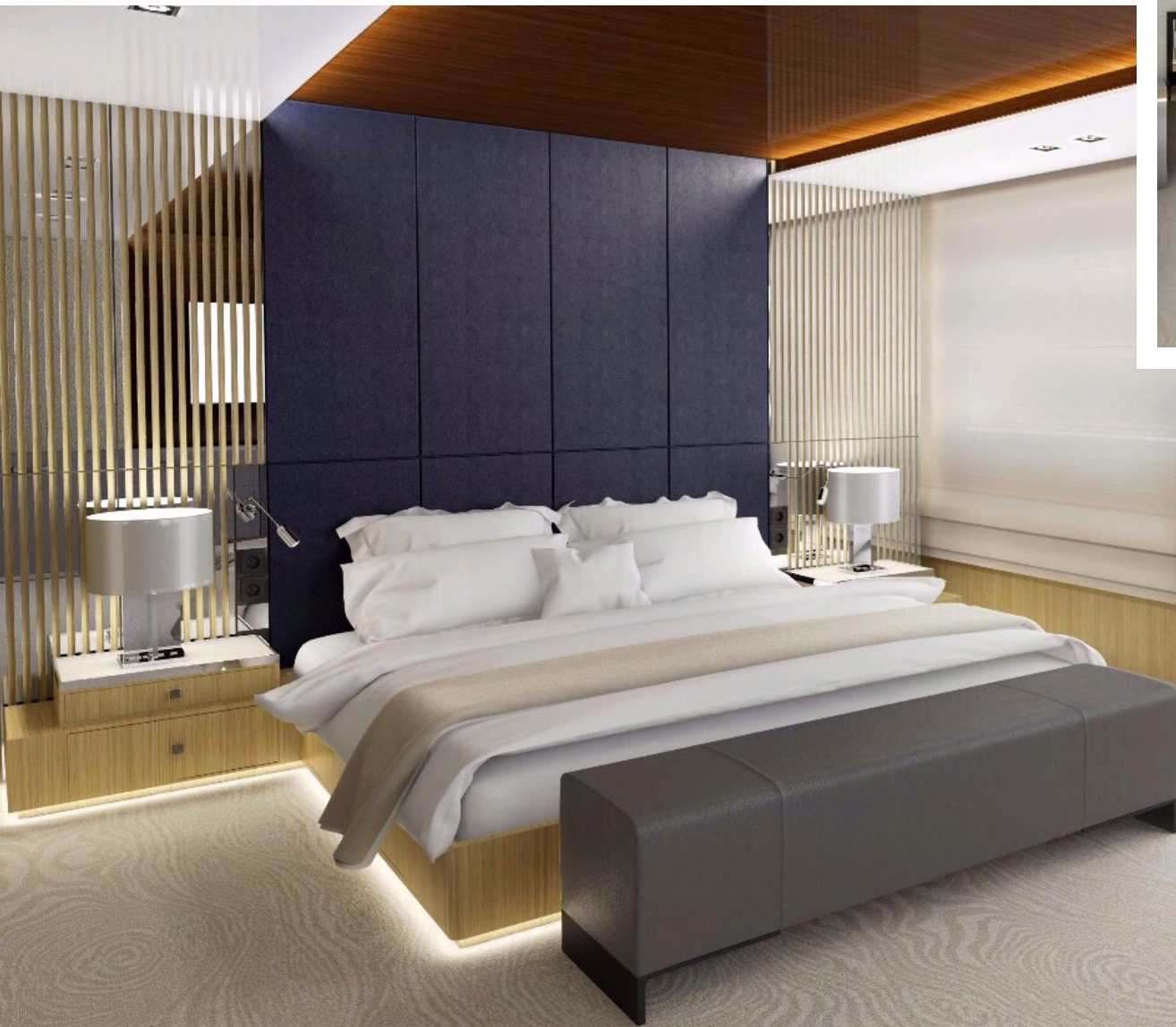
GYM

SERENITY

OWNER'S DECK



SERENITY



BEDROOM

SERENITY



BATHROOM



SERENITY



OWNER'S LOUNGE

DRESSING ROOM





Owner's Suite OFFICE

SPECIFICATIONS

Length	72 m
Beam	13.80 m
Draft	2.70 m
Built	2003
Reconstruction	2017
Builder	Austal
Flag	Greek

ACCOMMODATION

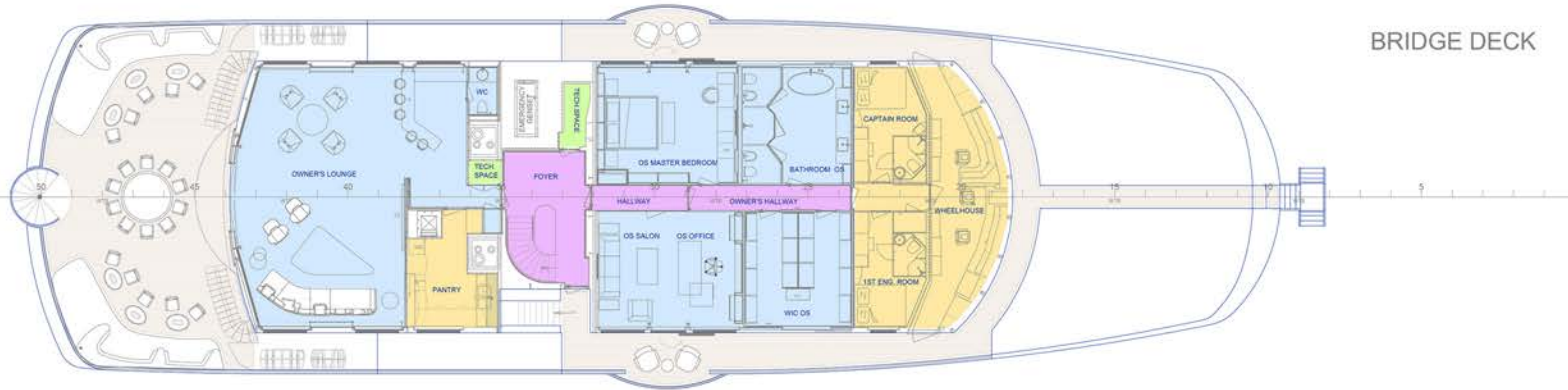
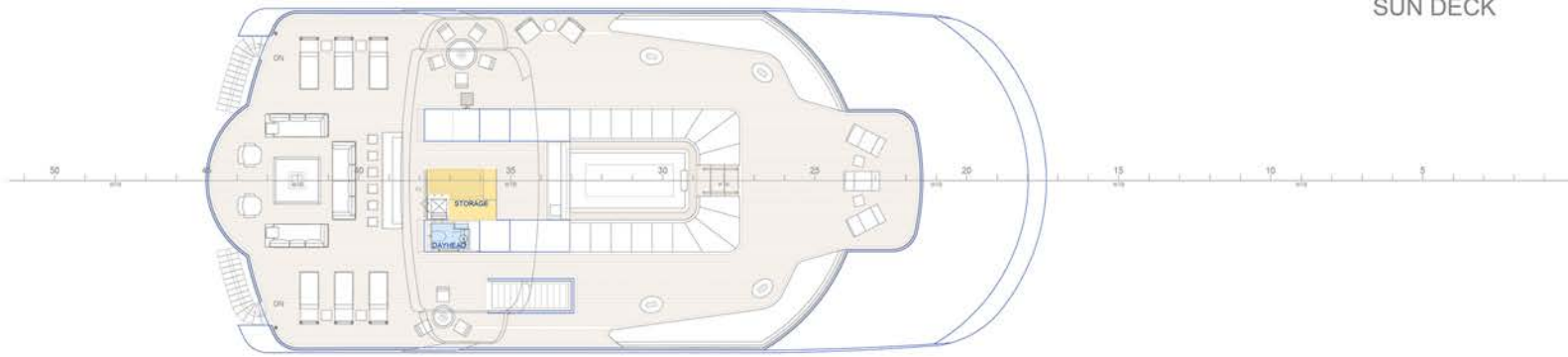
Number of guests	36
Number of cabins	14 + 1 Staff
Cabin Configuration	1 Master, 6 VIP, 7 Guest, 1 Staff
Crew	31

WATER TOYS

- 2 x Rib tenders, both with water-sports towing capacity
- 2 x Jet ski's See Doo
- 2 x Seebob's
- Flyboard
- 4 x SUP
- Scuba Gear for 2 persons
- Swimming Pool
- Ski / Wakeboard / Tubes / Kneeboard
- Kayak
- Inflatable towable toys
- Snorkelling equipment
- Fishing equipment
- Skurfboard - possibly

DISCLAIMER This document is not contractual. All specifications are given in good faith and offered for informational purposes only. The publisher and company do not warrant or assume any legal liability or responsibility for the accuracy, completeness, or usefulness of any information and/or images displayed. Yacht inventory, specifications and charter prices are subject to change without prior notice. None of the text and/or images used in this brochure may be reproduced without written consent from the publisher.

SERENITY GA 1/2



The image displays three detailed floor plans of a ship, labeled UPPER DECK, MAIN DECK, and LOWER DECK. Each plan includes a color-coded legend and a scale bar.

UPPER DECK: This deck features a large SALON at the stern, followed by STORAGE, GUEST BATHROOM, SPA, and another STORAGE area. A central HALLWAY leads to a FOYER and a series of rooms labeled ROOM U1 through ROOM U6. At the bow, there is a HOSPITAL, WC, BEAUTY PARLOUR, and a FITNESS ROOM. A central HALLWAY runs the length of the deck.

MAIN DECK: The stern features a large MAIN DINING AREA and a GALLEY. A central HALLWAY leads to a FOYER, OFFICE, and a series of rooms labeled ROOM M1 through ROOM M8. A central HALLWAY runs the length of the deck. Other areas include TECH SPACE, STORE, and P.O. OFFICE.

LOWER DECK: This deck features a BEACH AREA at the stern, followed by a large green area. A central HALLWAY leads to a series of rooms labeled LAUNDRY, CREW MESS, and various storage spaces. A central HALLWAY runs the length of the deck.



SERENITY

See you
SOON!