



QUINTA ESSENTIA

55 METER ALL-ALUMINIUM HYBRID SUPERYACHT
DELIVERED BY ADMIRAL IN MAY 2016



Unique

AN INNOVATIVE YACHT FOR ACTIVE PEOPLE WHO
CARE ABOUT THEIR HEALTH AND WELLNESS.
SILENT, EFFICIENT, EXCLUSIVE.



'The Fifth Essence'

QUINTA ESSENTIA



In ancient times the Greeks believed that all matter beneath the moon was made of varying combinations of four elements: Earth, Water, Fire and Air. Above the moon, matter was made up of a substance they called the 5th essence. In Latin, this is Quinta Essentia.

This fifth essence or element was believed to cure all illness, extend life, and turn base metals into gold. How to combine the four elements to make the Fifth was the dilemma of alchemy. We are all striving to find that perfect balance of all the aspects of our life in order to achieve optimum well being. Much

like alchemy - health does not just boil down to one "element". It is necessary to achieve a balance between many aspects (diet, exercise, stress management, happiness and other lifestyle choices) in order for us to find our Quinta Essentia.

The four elements are continually present in the yacht: four staterooms, four entertainment decks and four engines (two diesel and two electric). The fifth element is the yacht itself and brings the four elements together, offering health and wellness to its guests.



Optimised for efficiency

SPACIOUS AND POWERFUL



QUINTA ESSENTIA has a smart layout where all space on board is optimised. QUINTA ESSENTIA has a volume of 873 GT (25% more than her Dutch competitors), translating into more square meterage and higher decks and accommodating up to 12 guests in 6 cabins.

The yacht is built in aluminum with a hybrid propulsion, not wasting any fuel and at the same time reducing noise and vibration, with a top speed of 16.5 knots, and a range of more than 6,500 nautical miles at 9.5 knots (consuming 90 l/h) in electric mode.



Modern innovation

OUTSTANDING DESIGN

A dream-team of professionals worked on creating a real "Fifth Element": Dobroserdov design from Monaco created exterior design, naval architecture by the renowned Vripack group from the Netherlands and unique

interiors by Rome-based Michela Reverberi.

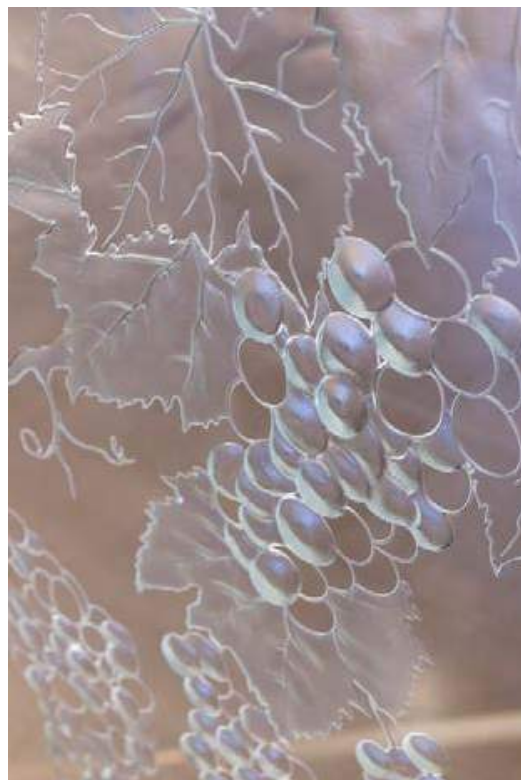
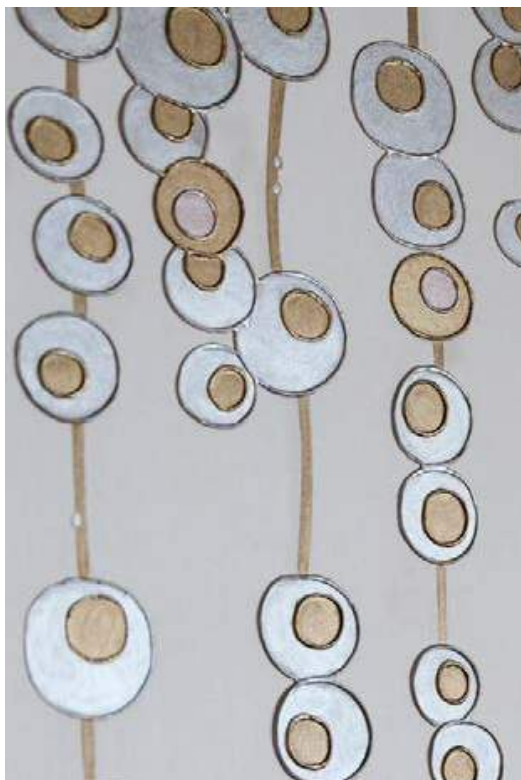
This outstanding all-aluminium hybrid is a new symbol of the highest European quality and modern innovation.



Beauty, balance and performance

INTERIORS

Lavish interior design is evident at every turn, the spectacular main staircase features bespoke ornate panels from Based Upon London, decorative glass from Pictet Paris and floors from iVassalletti.





Expansive

OWNER'S STATEROOM

In "private use" the yacht accommodates 8 people in Owner's and VIP Staterooms and 2 Suites. The largest owner's cabin is on the main deck and offers a balcony. The VIP cabin is on the upper deck, has a 180 degrees panoramic view and has access to a private deck looking forward.





Expansive

OWNER'S STATEROOM





Luxurious

OWNER'S BATHROOM





VIPs only
VIP SUITE



Discerning guests

SUITES

The 46 m2 (500 sq ft) Suites each with living room, bedroom and two bathrooms are located on the lower deck. In "charter use" the 2 suites transform into 4 guest cabins, accommodating 12 people.



Discerning guests

SUITES





Discerning guests

SUITES





Travel in style

MAIN SALON





Inspirational
ITALIAN DESIGN

The team of designers lead by Rome-based yacht designer and architect Michela Reverberi was asked to add a Florentine theme to the interior. This famous Tuscan city is associated with the Renaissance and holds the title of the greatest inspirational art setting in the world. The result is an ambiance of tranquility and repose.



Elegant

UPPER SALON

The upper deck has the main salon, which opens up completely to the aft deck, creating an immense indoor/outdoor area, including outdoor dining.

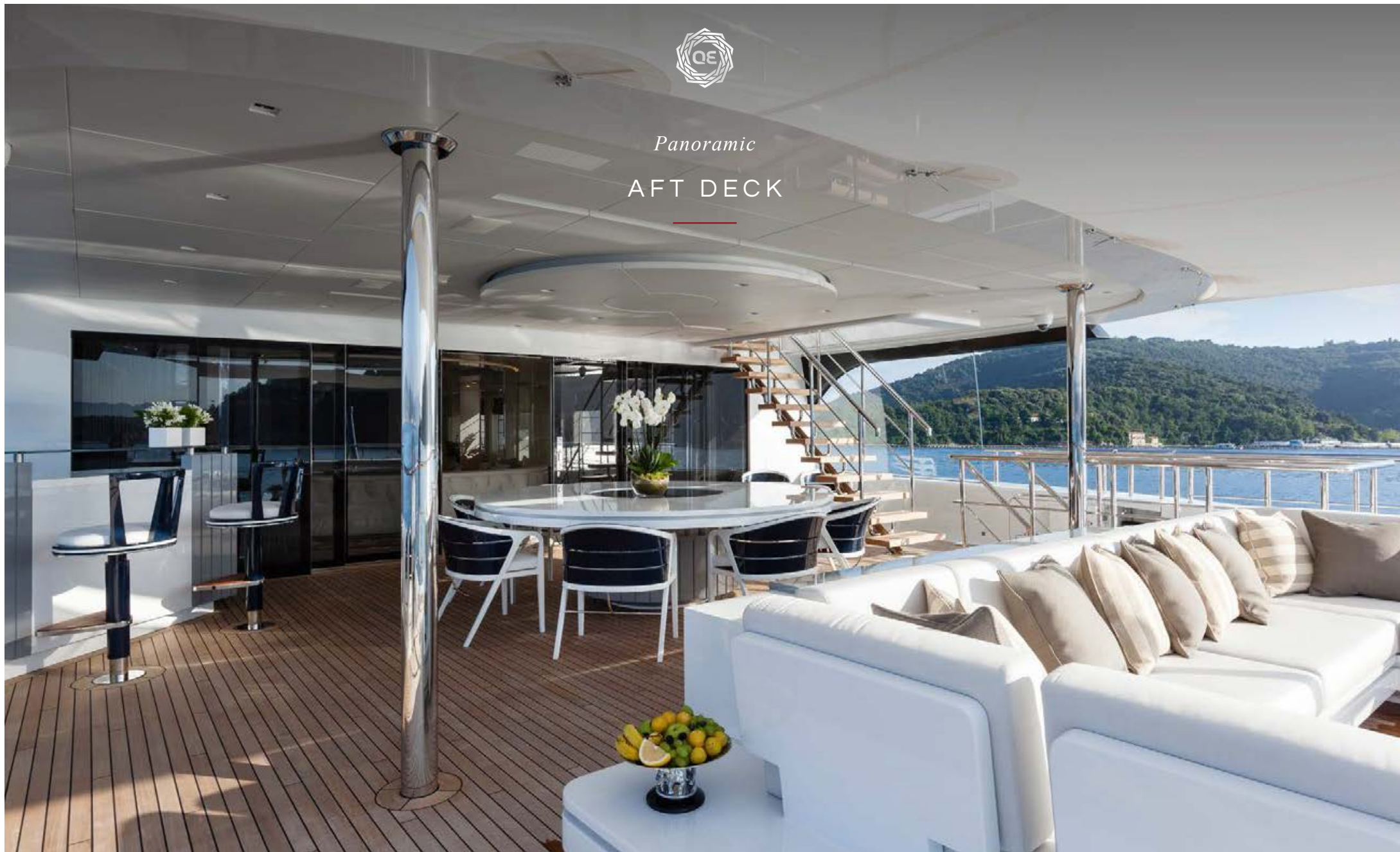


Elegant
UPPER SALON



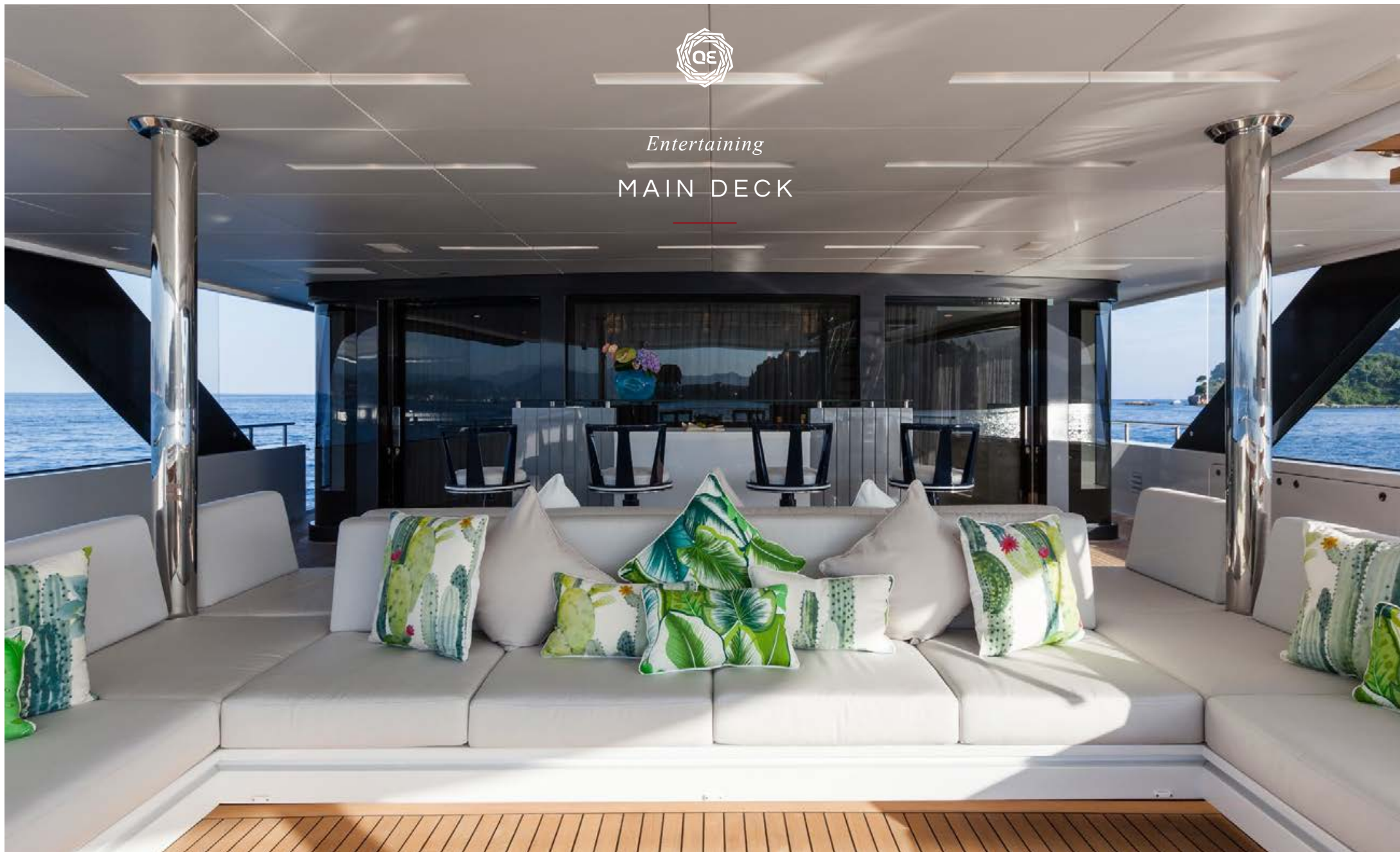


Panoramic
AFT DECK





Entertaining
MAIN DECK





Sensational
SUN DECK





Absolute

WELLNESS

The top deck features the spacious state-of-the-art gym with floor to ceiling windows which includes; Technogym machines, Kinesis Personal heritage, a New Forma Jog treadmill, New Forma recline bike, to maximise your wellness alongside the relaxing outdoor Jacuzzi lounge area.

The main deck has a stunning pool with waterfall seating 10 people comfortably. When the yacht is underway the pool water is stored in a tank where the water is pre-heated by the airconditioning exhaust, saving energy.

Aft of the pool is a great outdoor lounge and bar, making this deck much more attractive than traditional yachts.





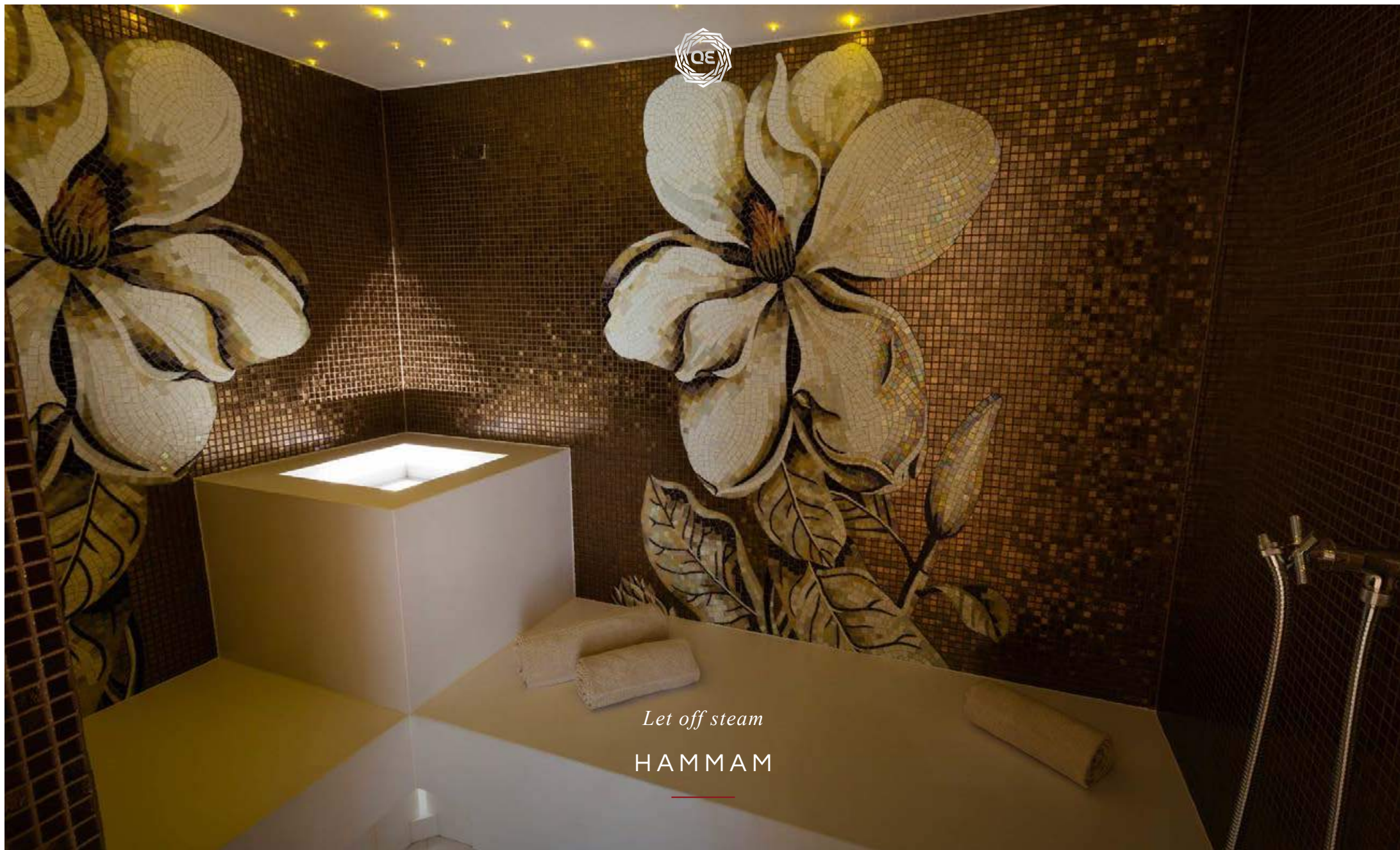
Relax

SPA

The full width spa located on the lower deck is a perfect place to unwind with friends and family. It includes a steam room, sauna, treatments room, relaxation room and balcony.



Let off steam
HAMMAM





Water's edge
SPA BALCONY



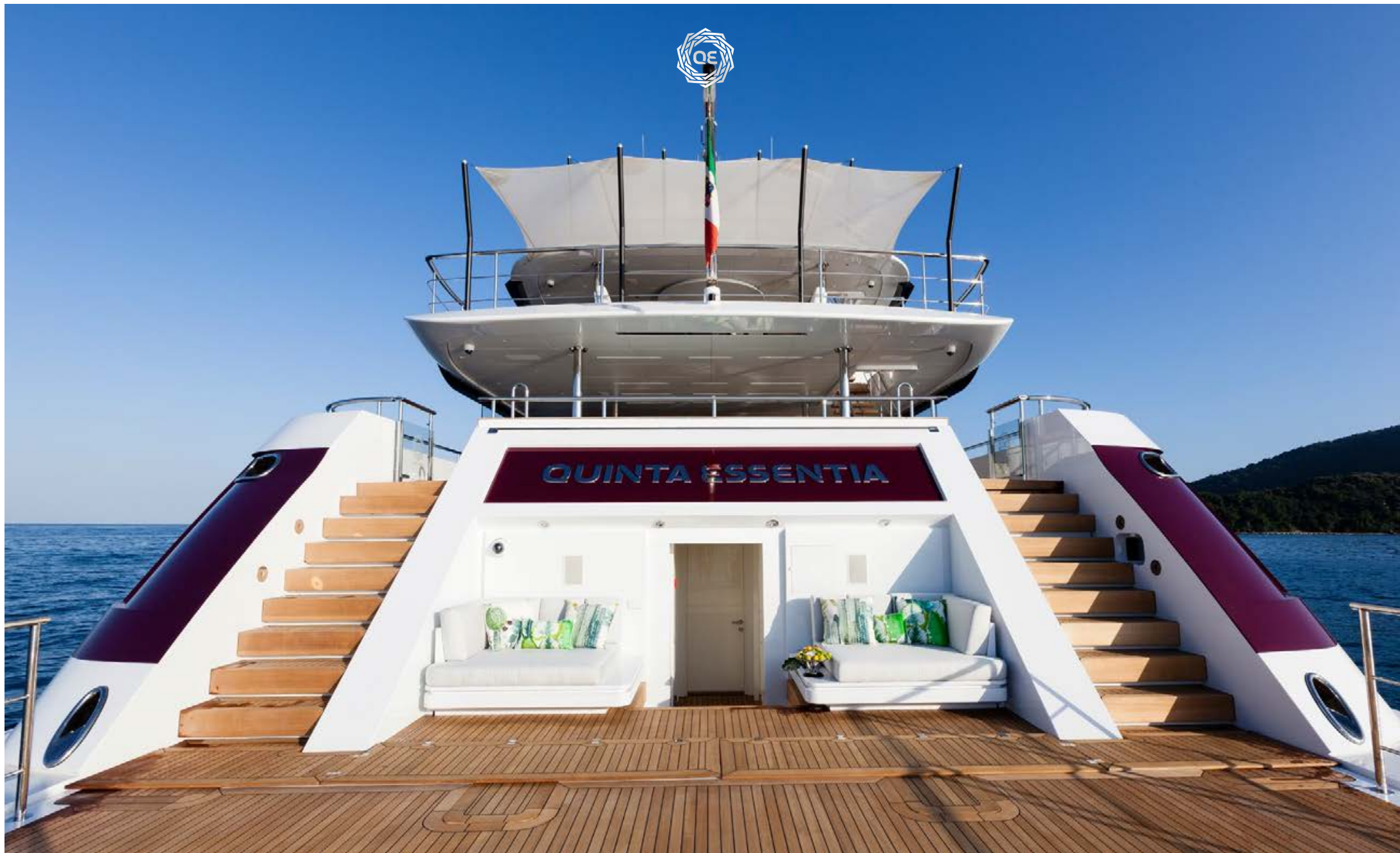


QUINTA ESSENTIA

Exceptional

BEACH CLUB

When the stern door comes down the swim platform has an exceptional surface area of 45 m2 (485 sq ft) ready for water sports.





Arrive in style

HELIDECK

The helideck is positioned on the foredeck, the favorite place to land a helicopter according to most pilots. The helipad is capable handling a Europter EC 135 or similar. The landing facility is for private use only and not certified for charter.



Powerful and efficient

ENGINE

The yacht is fitted with a hybrid propulsion system and is powered by two electric motors 150kW each. This is especially advantageous for night time departures, quiet berth entries, or cruising up to 10 knots while saving 20% on fuel. QUINTA ESSENTIA also has two modern and efficient MAN diesel engines, bringing the maximum speed to 16.5 knots. The variable speed Volvo generators are efficient and therefore cleaner and quieter at all load levels from 60KW through to 600KW. This results in very low noise and vibration levels and higher comfort.

In addition to the quiet propulsion and generators, the noise levels are reduced by using the latest insulation technology. QUINTA ESSENTIA has double and triple glazed throughout with flush glass on the outside of the portholes - this reduces noise at sea, therefore increasing comfort. XIR heat reflective film is applied to increase the efficiency of the AC system. More efficient air conditioning means lower air speeds from the fan coils - again maximizing comfort. The engine room has additional cooling, reducing the ventilation air speed and as a result reducing noise underway. Dry silencers on main engines and three-part water filtration to reduce noise of generators and main engines.



Bespoke

LIMO TENDER

The yacht comes with a fully carbon fiber custom built limo tender designed to accommodate 8 guests in comfort and easy to manoeuvre. In addition, there is a Castoldi 18 fast rescue boat and general tender.



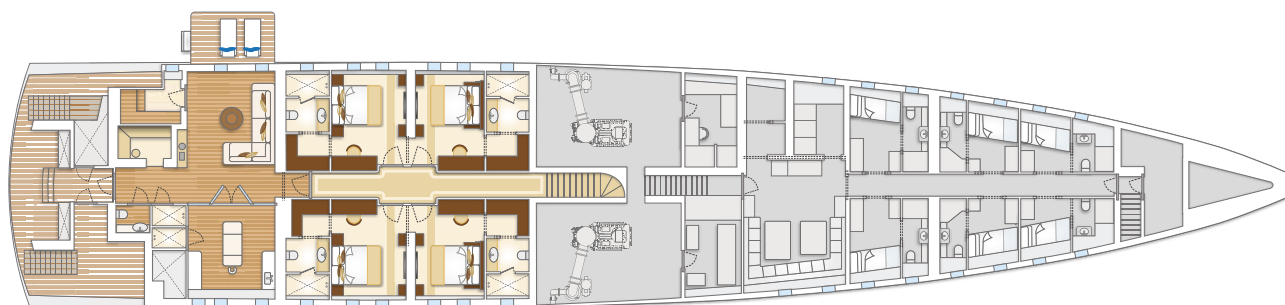
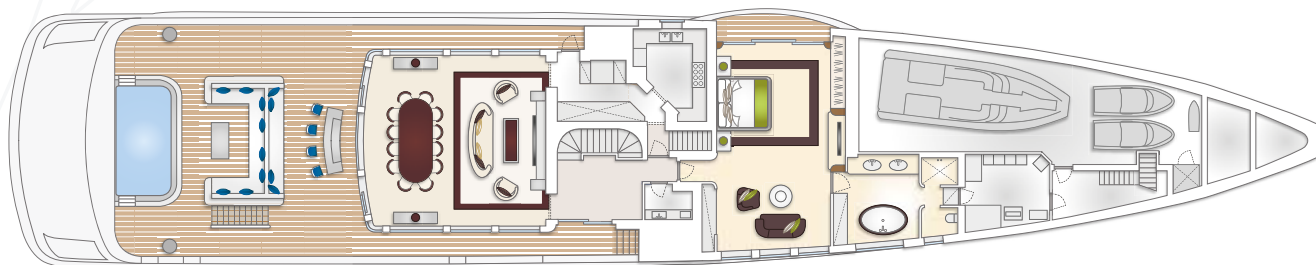
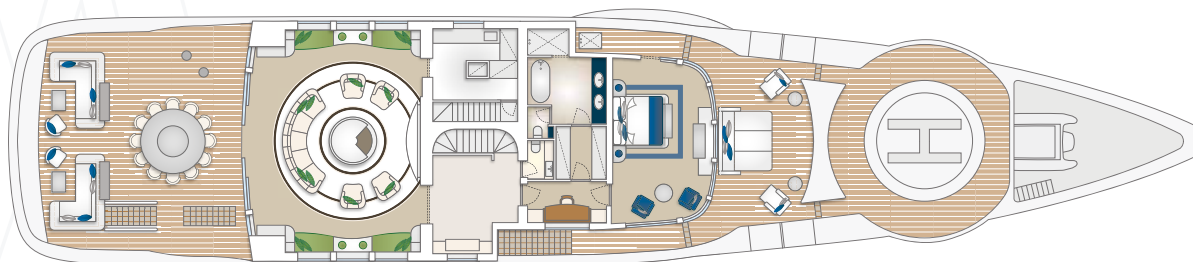
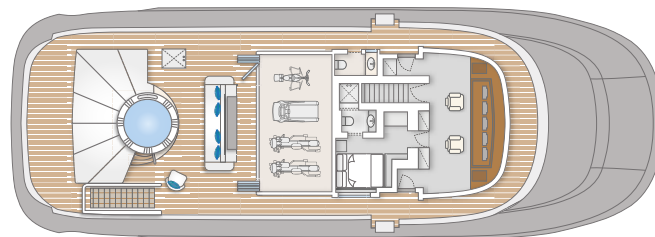


Fully integrated
BRIDGE

A custom integrated i-Bridge which controls everything from navigation to security and systems monitoring. Five huge 24 inch displays and a touch panel create a clean, contemporary look. Bridge specialists TEAM Italia developed the i-Bridge system with input from experienced superyacht captains to ensure remarkable functionality.



DECK PLANS





SPECIFICATIONS

LOA	55 m	Range at 9.5 knts	> 6.000 nm
LWL	52.2 m	Range at 12 knts	3.500 nm
Beam	10.2 m	Stabilisers	CNC electric, zero speed
Depth	4.6 m	Bow Thruster	Voith, rim driven 180kw, silent
Design Draught	2.45 m	Guest Accommodation	12
Displacement	592 MT	Crew Accommodation	13
Gross Tonnage	873 GT	Classification	RINA Commercial yacht, unrestricted, RINA Green Plus, RINA Comfort Class
Main Engines	2x MAN LE463 1029 KW (1400 hp) at 2100 rpm	Charter	LY2 compliant
Generators	2 x Volvo variable speed 600 KW	Flag	Marshall Islands
Electric Motors	2 x 150 KW in line between engine and gearbox	Fuel	80.000 lts
Hybrid System	Auxilia	Fresh water	22.500 lts
Propulsion	2 x fixed pitch propellers and shafts	Grey/Black water	13.500 lts
Cruising Speed	12 kn	Fire fighting	Hi fog throughout
Maximum speed	16.5 kn		
Max Speed Electric	9.5 kn		



CONSTRUCTION

NAVAL ARCHITECTURE	Vripack
EXTERIOR DESIGN	Dobroserdov Design
INTERIOR DESIGN	Michela Reverberi Design

NOISE VALUES

NOISE LEVELS	AT ANCHOR	CRUISING SPEED
MAIN SALON	41 dBa	53 dBa
OWNER'S SUIT	39 dBa	47 dBa
GUEST CABINS	39 dBa	59 dBa
WHEELHOUSE	41 dBa	46 dBa

INTERIOR HEADROOM

LOWER DECK	2.2M (7'3")
MAIN DECK	2.3M (7'6")
UPPER DECK	2.3M (7'6")

PRINCIPAL SYSTEMS

- Auxilia Hybrid System, diesel mode or electric propulsion mode (offering 20% saving over diesel mode at 9.5 knts)
- Voith rim driven silent bow thruster
- Team Italia integrated ibridge
- Spa area on lower deck including Hammam, sauna, treatment room
- Pool on main aft deck with drain tank. Water is preheated using heat recovery and pool filled in 5 mins
- Fully equipped gym
- Convertible lower deck staterooms enabling four to six cabin layout
- Touch and go helipad
- Integrated entertainment and domotics system with iPad/iPhone control

TENDERS

MAIN TENDER: 8.0m limousine. Carbon fiber, 2 x Volvo Penta D3.

Air conditioning, fridge, entertainment. 40 knots.

SECONDARY TENDER: Castoldi 18. Doubles as rescue boat



TOYS

- 2 x F5s Seabobs
- 2 x Jetsurf Ultrasport
- 2 x Seadoo Wake pro 230 waverunners
- 2 x Jobe wakeboards
- 1 x Water-ski
- Selection of towables (for 8 pax in total)
 - Fishing Equipment
 - Snorkelling Equipment







QUINTA ESSENTIA