



MARGARITA





# 47M DISPLACEMENT



Margarita is our tenth yacht at 47 metres and this steel displacement design continues to evolve. Sleeker windows, sharpened hull and superstructure lines and simpler symmetry combine to deliver elegant classic contemporary design.



Margarita has new layout ideas while still providing the maximum internal space under the 500GT threshold. The hull is a paragon of efficiency with a bulbous bow and sleek lines resulting in a yacht that needs the least amount of power to achieve a particular speed. Less fuel is used and with a range of 4.000 miles this is an increasingly practical consideration. The Owner has the choice to increase cruising speed or maximise economy or have the best of both options. This extremely impressive yacht is already under construction and will be available for delivery in June 2014.






The 85 square metre sun deck is almost half the length of the entire yacht. An elegantly curvaceous terrace includes a Jacuzzi pool surrounded by Summit sunbeds, a shaded teak dining table (for 12 guests), a bar and a semi-circular sweep of sofas.





An aerial, top-down view of a luxury yacht's upper decks. The yacht is white with wooden decking. The top deck features a large dining area with several tables and chairs. The middle deck has a lounge area with curved sofas and a central table. The bottom deck also has a lounge area with sofas and a central table. A red, white, and blue flag is flying from the middle deck. The yacht is on a blue sea.

All three top decks have extensive dining and entertaining areas. Each deck provides different levels of indoor and outdoor space so that guests will always find the perfect place – a quiet corner to relax in the shade through to a huge lounge for a party.



## ZERO SPEED

Zero speed stabilizers keep Margarita stable at anchor and help create the best possible ride underway.

## DECK SPACE

A total of 180 square metres including an 85 square metre sun deck.

## 499GT

The maximum volume possible under 500GT.

## 4.000Nm

A highly efficient hull design delivers remarkable fuel economy.

## 30/06/2014

Like every Heesen yacht before her, Margarita will be delivered precisely on time: 12.00 noon, 30th June, 2014.





In the main saloon subtle patterning, rich textures, silk, wool and linen fabrics contrast against the walnut floor, oak walls and gloss lacquered ceiling. There are two dining areas - indoors around a beautifully proportioned walnut table or on the aft deck terrace where ten guests can be seated on built-in sofas and Dedon's Barcelona chairs.

## MAIN SALOON





MAIN SALOON LOOKING AFT





The sky lounge is inspiringly bright thanks to large windows along the full length of the entire saloon. A bar and home cinema system make this equally suited for cosy evenings as guests move inside from the terrace. A final detail is the lacquered ceiling with inlaid Swarovski crystals. Heesen craftsmanship is everywhere, even on the walnut flooring where the grain has been cut to radiate outwards echoing the circular theme.

## SKY LOUNGE





SKY LOUNGE LOOKING AFT





Classic contemporary in style, particular attention has been paid to fabrics such as a fine silk and linen weave, pearlised Majilite and richly grained leather. Woods include dark stained and natural walnut. The en-suite bathroom is a myriad of marble vanity units, oak panelling, an Art Nouveau custom-created mosaic as the centre panel and a pale travertine marble floor. A large private study and walk-in wardrobe ensure that the Owners feel totally at home.

## MASTER SUITE





MASTER BATHROOM







MASTER SUITE STUDY

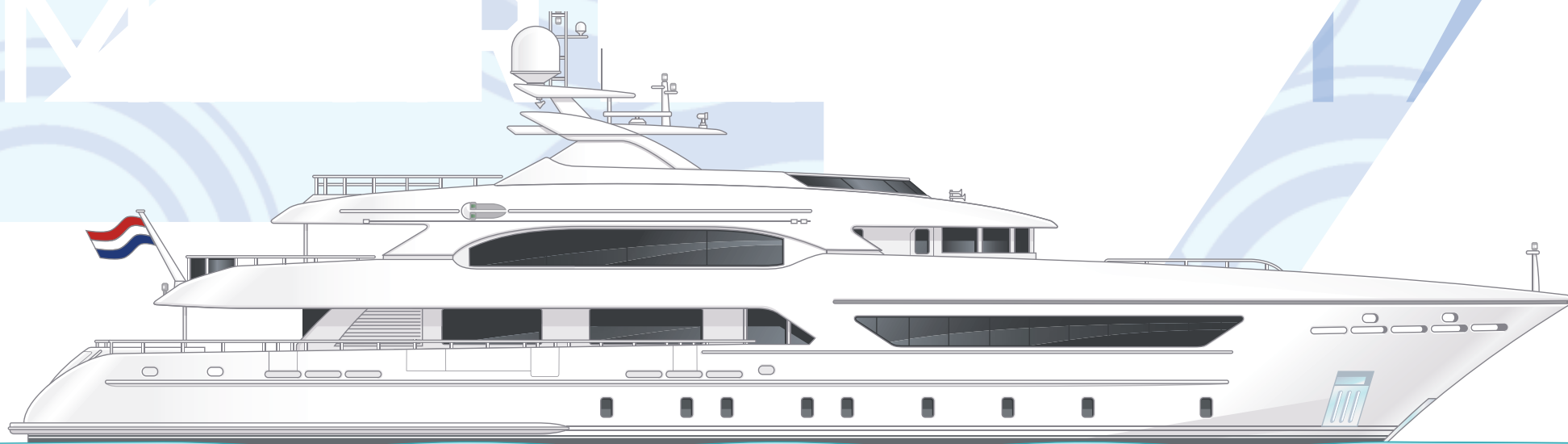


On the lower deck, Margarita has two double and two twin suites decorated with walnut panels, deep ultra soft wool carpets and silk textured wallpapers. En-suite bathrooms all have marble walls, limestone floors and contemporary polished steel fittings.

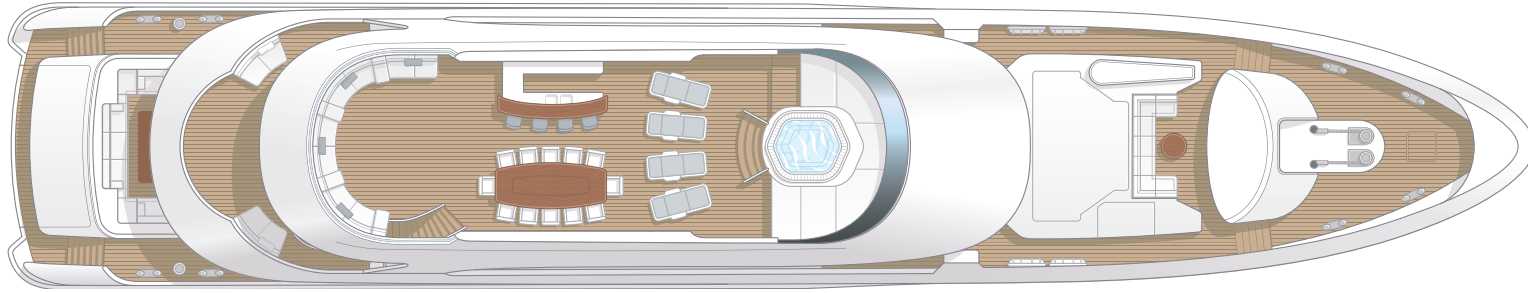
## GUEST SUITE



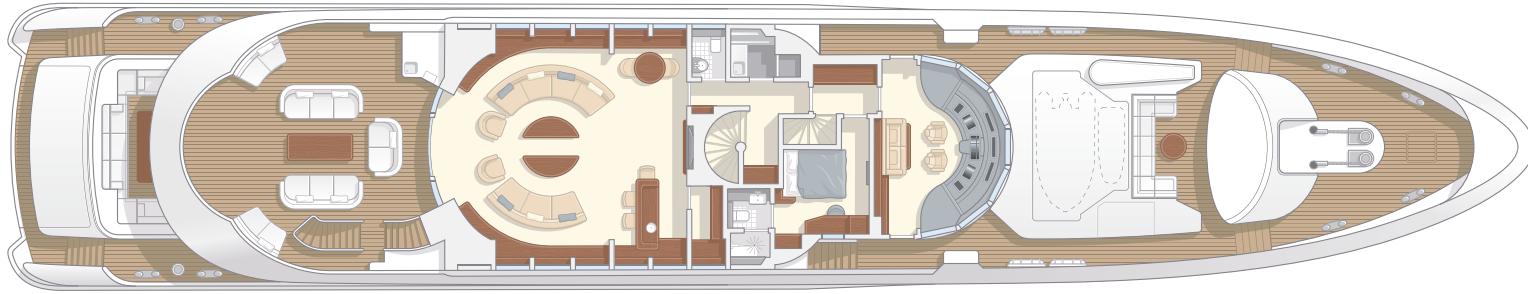




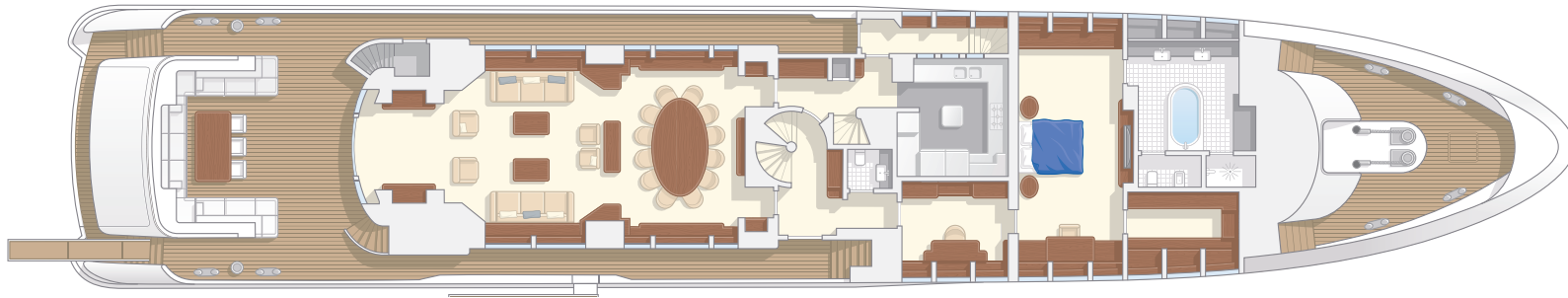




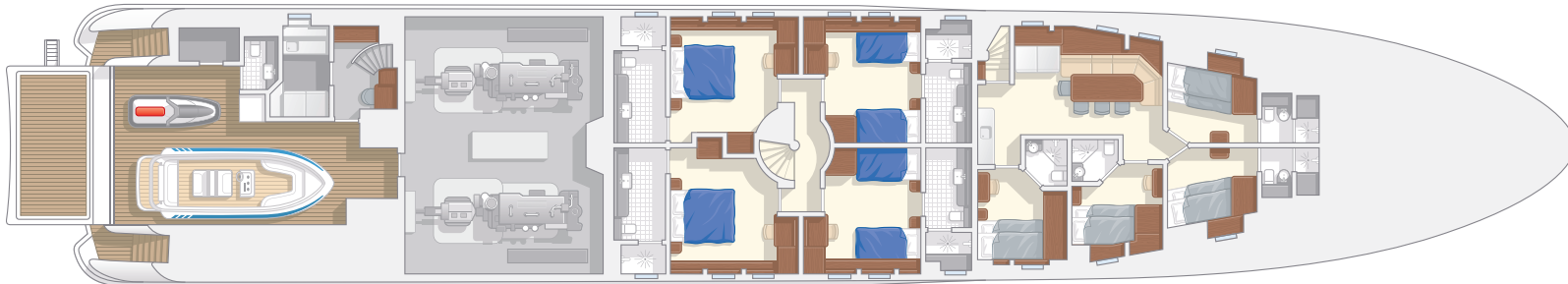
SUN DECK



UPPER DECK



MAIN DECK



LOWER DECK



# SPECIFICATION

## MARGARITA. HULL 16847

### GENERAL

Hull type:	Displacement
Naval Architect:	Heesen Yachts
Interior Designer:	Omega Architects
Exterior Styling:	Omega Architects
Classification:	Lloyds  100A1 SSC YACHT  LMC Large Commercial Yacht Code LY2 / MCA
Hull:	Steel
Superstructure:	Aluminium

### DIMENSIONS

Length over all:	46,70m / 153ft 2in
Beam over all:	8,83m / 29ft
Draft:	3,07m / 10ft 4in
Displacement (50% load):	400 tons

### ACCOMMODATION

Guests:	10
Cabins:	Full-beam Owner's stateroom, two double cabins, two twin cabins

### TECHNICAL DETAILS

Maximum speed (50% load):	15 knots
Range at 12 knots:	4.000Nm
Fuel capacity:	60.000 litres / 15.850 US Gallons
Fresh water:	20.000 litres / 5.280 US Gallons

### PROPULSION DETAILS

Main engines:	2 x MTU 8V 4000 M63
Maximum power:	2 x 1.000kW
Gearbox:	2 x ZF 4661
Engine control:	MTU Blue Vision, three control stands
Propellers:	Schaffran five blade fixed pitch Ø 1.600mm
Generators:	2 x Kilo-Pak
Power:	2 x 99kW
Bowthruster:	ZF Marine 90kW, hydraulically driven
Steering system:	Sperry Marine Systems
Stabilizers:	Naiad Dynamics, type 621 with 2 fins of approx. 3m <sup>2</sup> , zero speed



# HEESEN

## A COMPANY BUILT BY YACHTS

Heesen is recognised as the world leader in aluminium construction, so it is particularly pleasing that our steel yachts also consistently win major awards.

In one of the most modern construction facilities in the world, every aspect of every yacht is geared towards achieving our exceptional standards of engineering.

Our 4.4 hectare Oss shipyard has nine sheds and five dry docks. Each year, over four million parts are meticulously used in the construction of up to eight yachts.

For the quality, at the price, we believe Heesen yachts are the finest value in the world. The current range includes aluminium and steel, displacement, semi-displacement and the new revolutionary fast displacement.





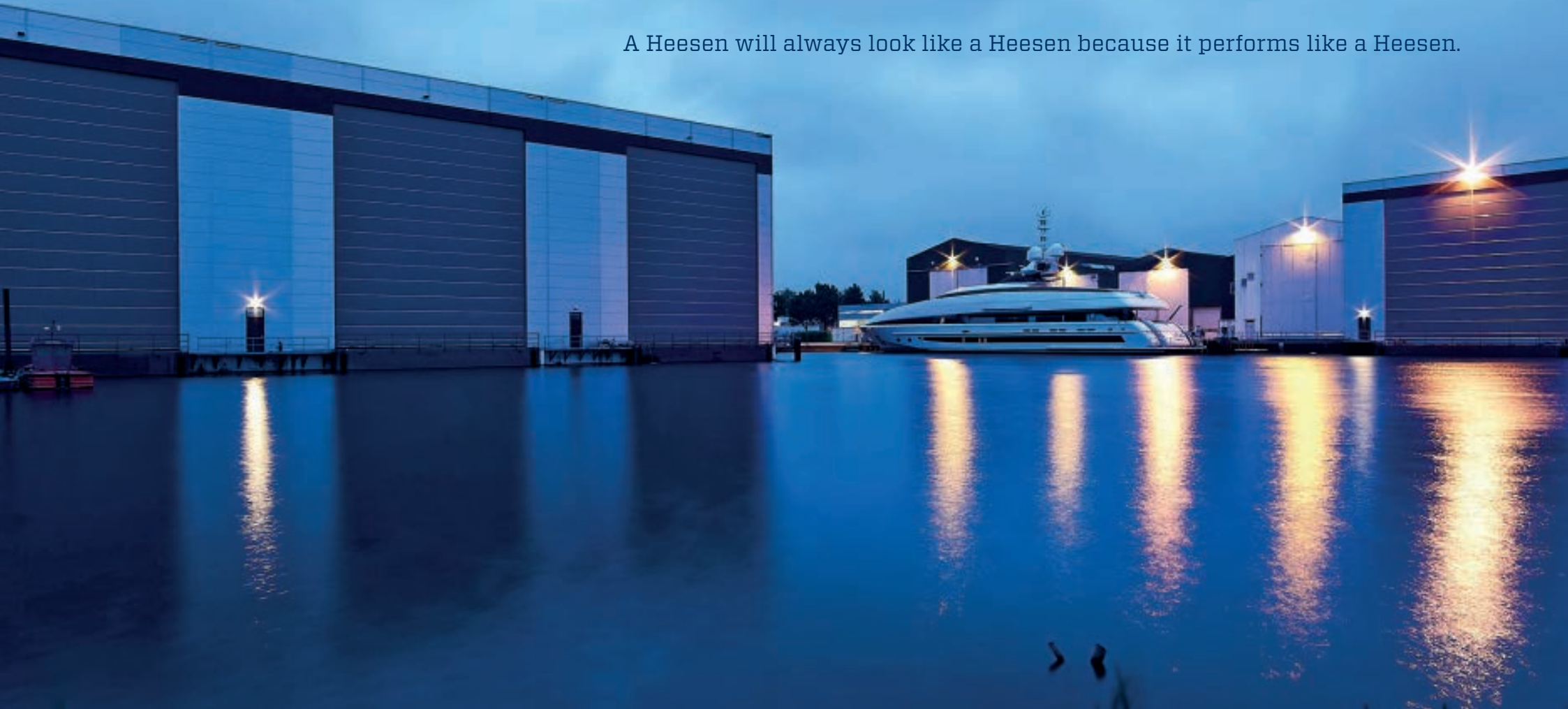
A Heesen will always stand for individuality and quality in a world where these ideals are increasingly compromised.

A Heesen will always be hand-built by craftsmen in Holland.

A Heesen will always be custom-built to combine the Owner's ideas with our expertise.

A Heesen will always be the highest denominator of performance and luxury.

A Heesen will always look like a Heesen because it performs like a Heesen.







[sales@heesenyachts.nl](mailto:sales@heesenyachts.nl)

[www.heesenyachts.nl](http://www.heesenyachts.nl)

+31 (0) 412 665544

Rijnstraat 2, 5347 KL Oss

The Netherlands