



AZURO



Azuro is our fourth 50 metre semi-displacement aluminium yacht. Her sistership, Satori, is one of the most highly rated of her size, winning the ultimate accolade of World Superyacht of the Year.



50M SEMI-DISPLACEMENT

Heesen's innovative naval architecture means that less power is needed to achieve a given speed. Less power means less fuel. The latest engines powering a streamlined shape above and below the water result in a yacht with a top speed of 23 knots and a range of over 3,100 nautical miles. Azuro has the highest possible internal volume under the 500GT threshold alongside a 70 square metre open plan sun deck. The yacht will be delivered on 30th May 2014.



AZURO UNDER CONSTRUCTION

SISTERSHIP



Azuro's flowing lines are highly distinctive. Continuous sheets of laminated triple glazing are thermo bonded to the superstructure creating a seamless wall of windows.

Four distinct deck areas provide space for every occasion. A foredeck for lounging around in privacy while in port and a 70 square metre sun deck that is probably the largest on a yacht of this size. Shaded dining is on the upper deck and Azuro's main deck terrace combines with the saloon to create an enormous 25 square metre entertaining space.

ZERO SPEED

Hull designed for speed,
stabilised for comfort both underway and at anchor.

23 KNOTS

Power, shape, performance: twin MTU engines,
streamlined subsea hull, top speed of 23 knots.

499GT

The largest possible interior space under the 500GT threshold.
Maximum space, reduced running costs.

3.100Nm

Transatlantic range at 11 knots.
Highly efficient and economic cruising.

30/05/14

Azuro will be delivered on 30th May 2014.



Azuro has the largest volume of any yacht of her size. She combines speed and space in a formula known only to Heesen. Interior design is by the acclaimed Italian designer Francesco Paszkowski, who was also responsible for Ventura; her sistership. Paszkowski's style takes the form of natural minimalism and Azuro is an ideal yacht for such a beautifully pure concept. Just three materials have been selected for all interior surfaces: teak, limestone and leather.

MAIN SALOON





MAIN SALOON

In the main saloon silk-surfaced limestone adorns the sideboards, floorboards are of unpolished teak and the ceiling is covered with pale tan leather. A remotely controlled set of louvred blinds enables the dining area to be screened off from the lounge or fully opened to reveal the space. Particular attention has been focused on lighting systems throughout the yacht. Custom-controlled ambient lighting can transform the atmosphere from bright full party mode through to pools of subtle illumination.

The sky lounge is designed around the idea of concentric circles: curved glazed doors set behind curved soft sofas and circular polished steel tables. For entertaining, the saloon leads out to a dining terrace that provides spectacular panoramic views.

SKY LOUNGE



SKY LOUNGE LOOKING FORWARD



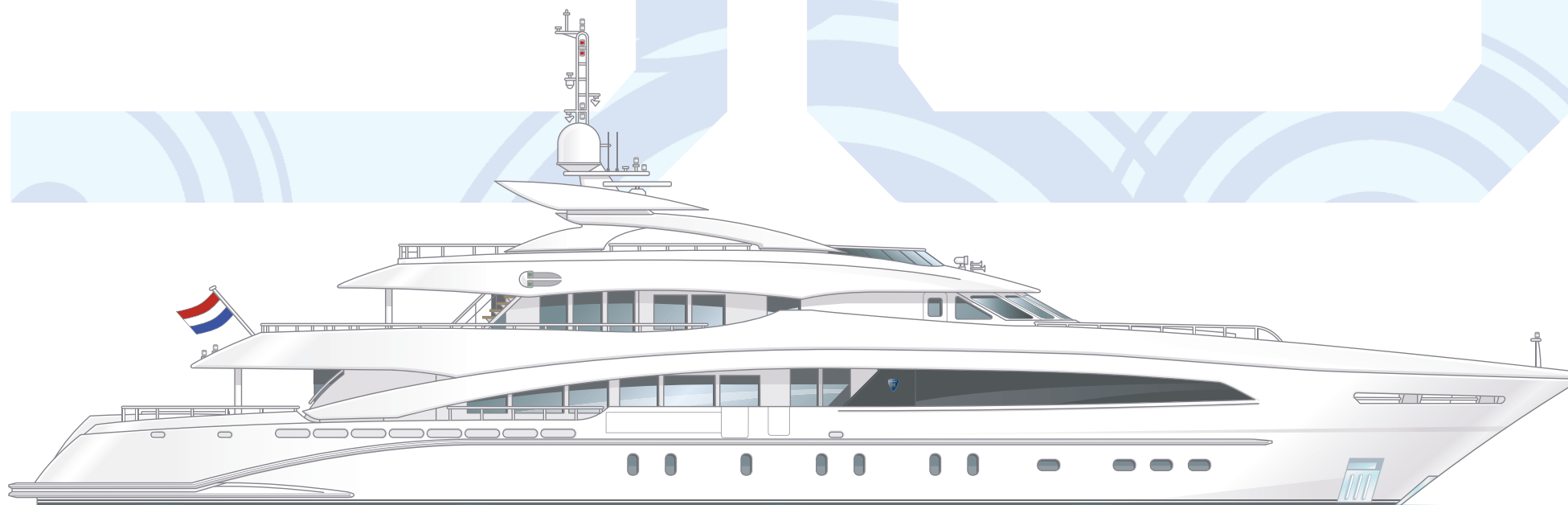
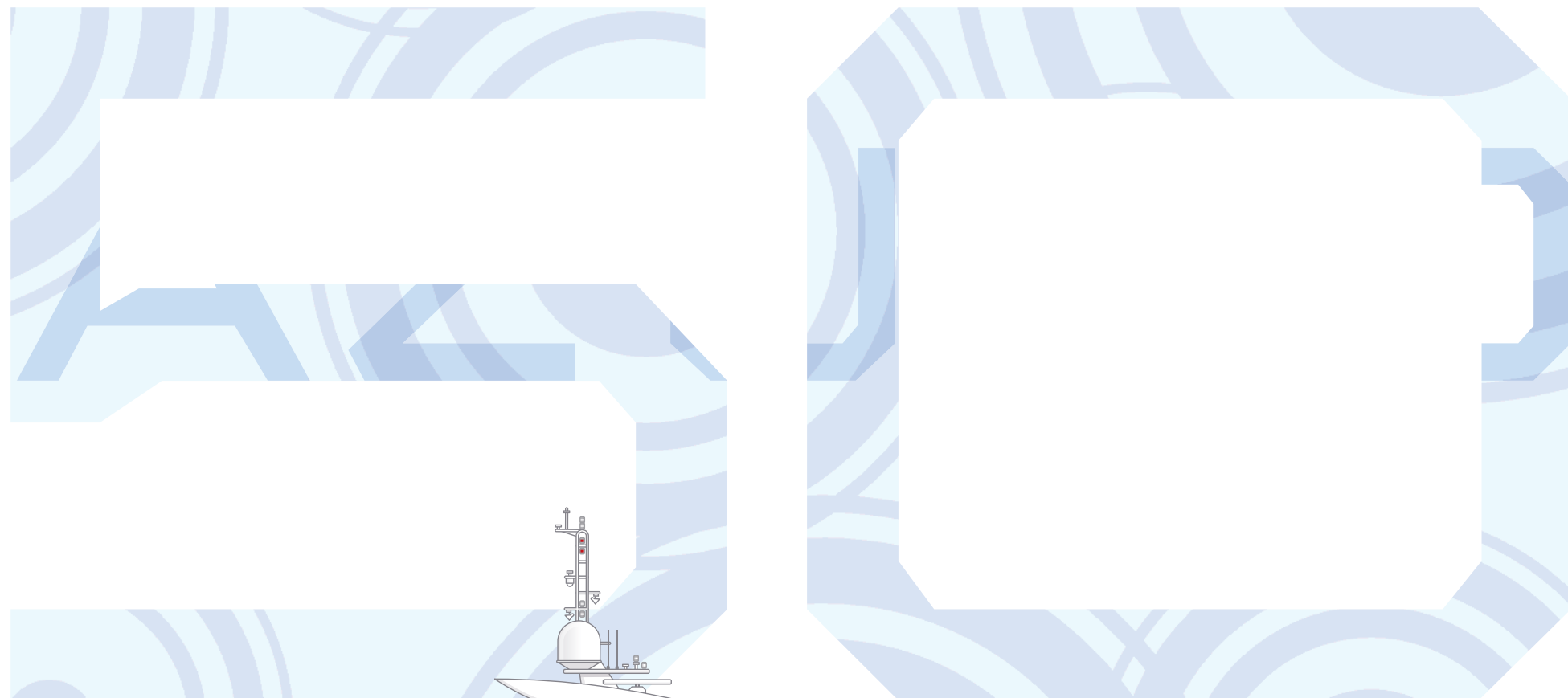


MASTER SUITE

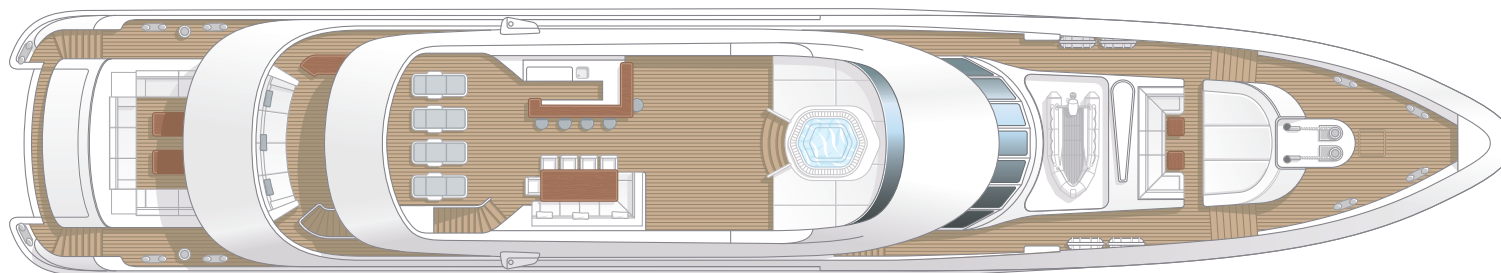
Azuro's master suite is set forward on the main deck. Both bedroom and bathroom are full-beam with windows along the entire length of the suite. The minimalist theme is calm and contemporary with sliding panels concealing details such as the entertainment system. Additional suites are all on the lower deck and include a full-beam VIP with a large ensuite bathroom, two double and two twin cabins.



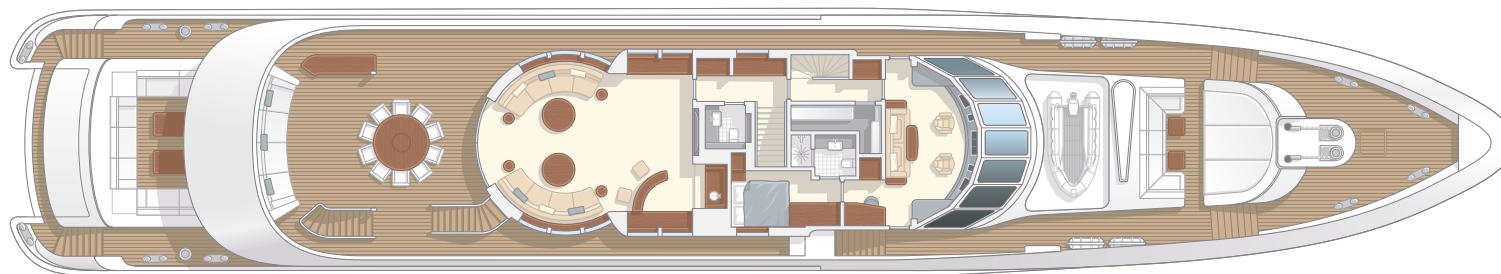
GUEST SUITE



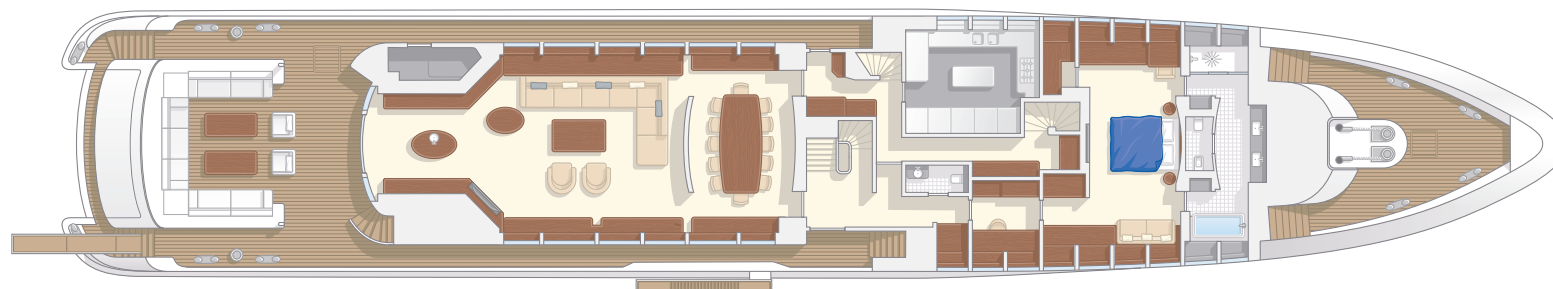
SUN DECK



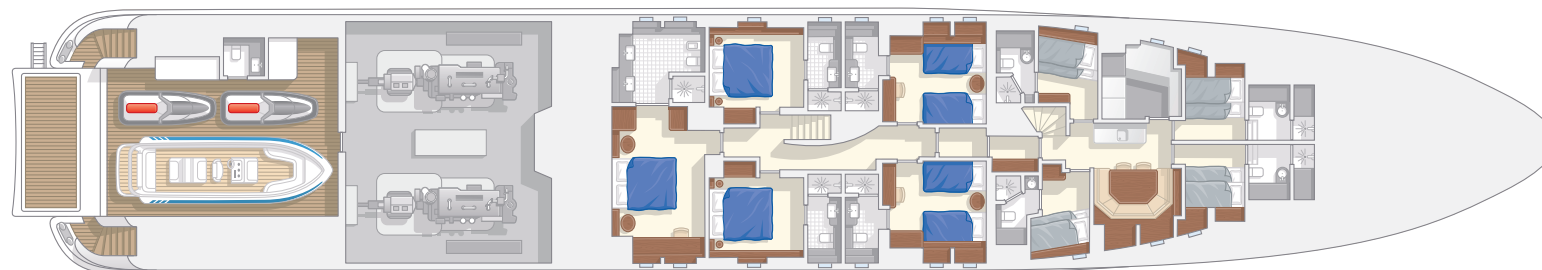
UPPER DECK



MAIN DECK



LOWER DECK



SPECIFICATION

AZURO. HULL 16650

Hull type:	Twin propeller, hard chine, semi-displacement
Naval Architect:	Van Oossanen / Heesen Yachts
Exterior Styling:	Omega Architects
Interior Designer:	Francesco Paszkowski Design
Classification:	ABS  A1 Yachting Service  AMS Large Commercial Yacht Code LY2 / MCA
Hull:	Aluminium
Superstructure:	Aluminium

DIMENSIONS

Length over all:	49,80m / 163ft 4in
Beam over all:	9,00m / 29ft 6in
Draft:	2,50m / 8ft 2in
Displacement (50% load):	313 tons

ACCOMMODATION

Guests:	12
Cabins:	Full-beam master suite and study, full-beam VIP cabin, 2 double cabins and 2 twin cabins

TECHNICAL DETAILS

Maximum speed (50% load):	23 knots
Range at 11 knots:	3.100Nm
Fuel capacity:	68.800 litres / 18.200 US Gallons
Fresh water:	16.200 litres / 4.300 US Gallons

PROPULSION DETAILS

Main engines:	2 x MTU 16V 4000 M73L
Maximum power:	2 x 2.880kW
Gearbox:	2 x ZF 9055A
Engine control:	MTU Blue Vision
Propellers:	Schaffran, five blade fixed pitch ø 1.500mm
Generators:	2 x Kilo-Pak
Power:	2 x 99kW
Bowthruster:	ZF Marine, 90kW, hydraulically driven
Steering system:	Sperry Marine Systems
Stabilizers:	Naiad Dynamics, model 720 with 2 fins of approx. 3,5m ² , zero speed

HEESEN

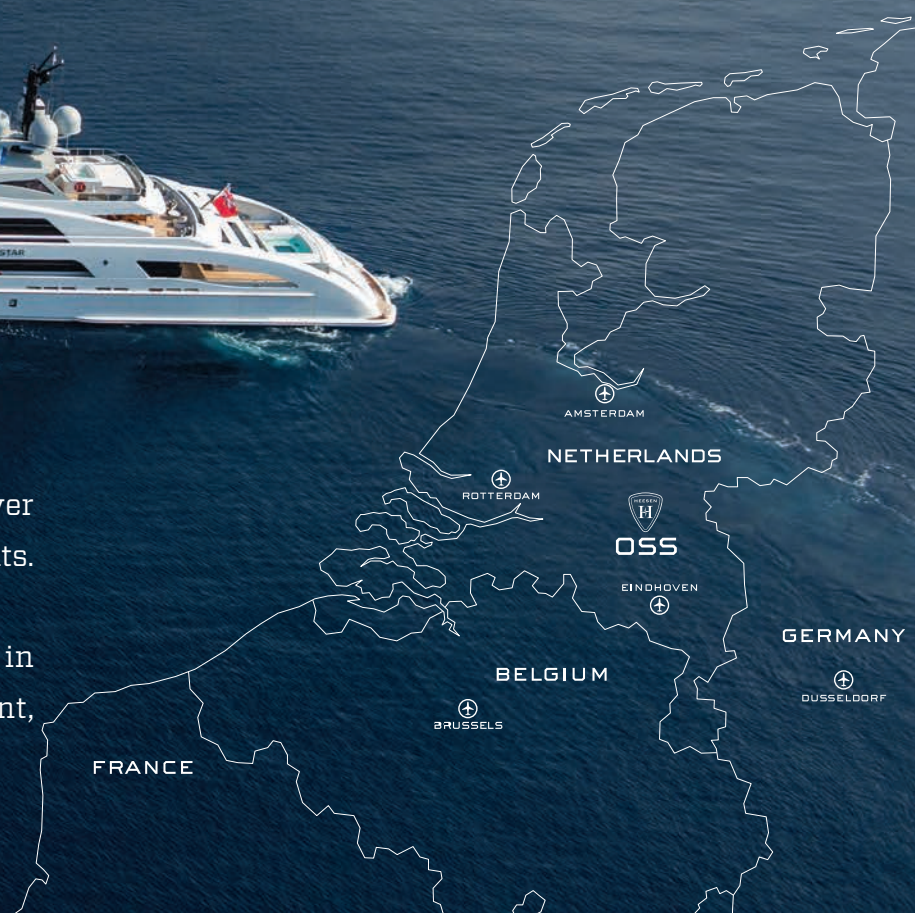
A COMPANY BUILT BY YACHTS

Heesen is recognised as the world leader in aluminium construction, so it is particularly pleasing that our steel yachts also consistently win major awards.

In one of the most modern construction facilities in the world, every aspect of every yacht is geared towards achieving our exceptional standards of engineering.

Our 4.4 hectare Oss shipyard has nine sheds and five dry docks. Each year, over four million parts are meticulously used in the construction of up to eight yachts.

For the quality, at the price, we believe Heesen yachts are the finest value in the world. The current range includes aluminium and steel, displacement, semi-displacement and the new revolutionary fast displacement.



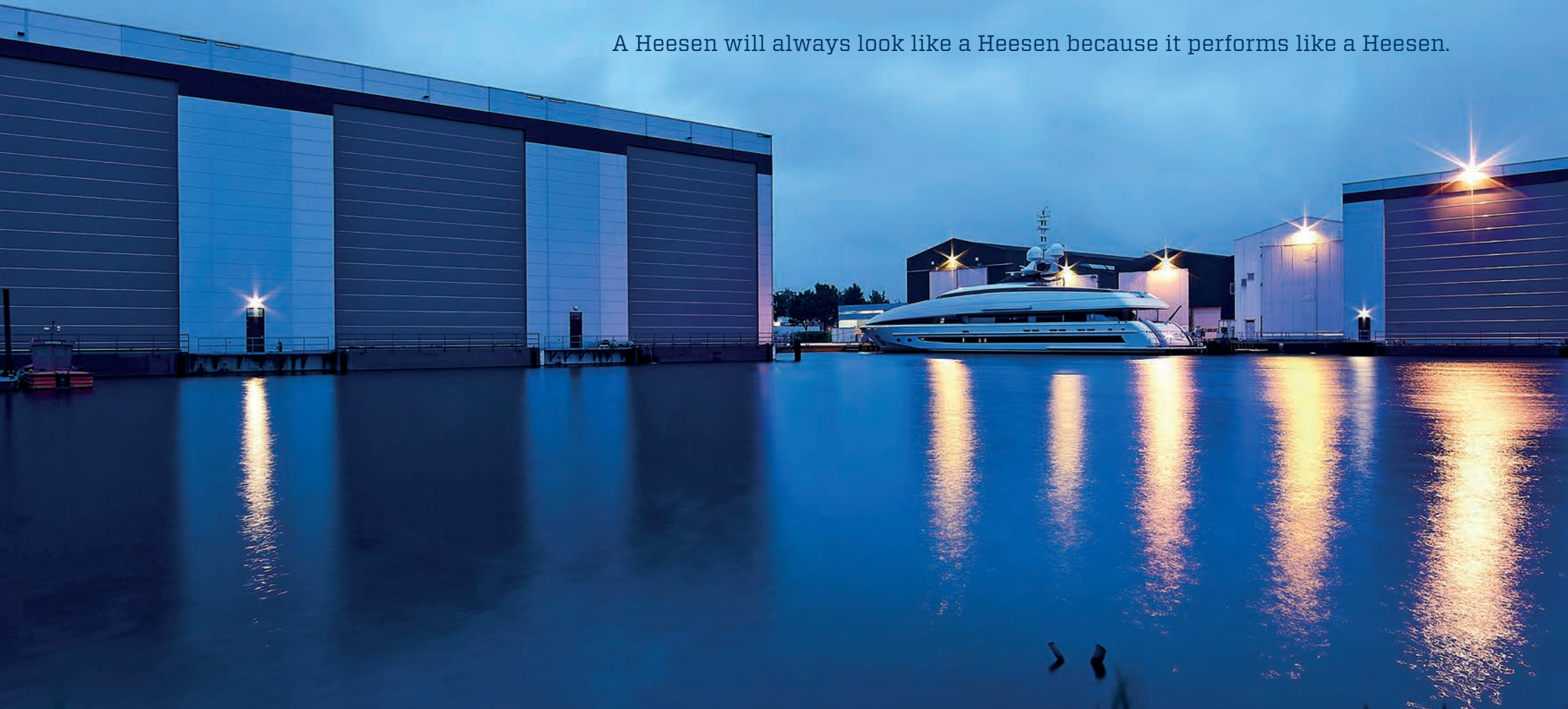
A Heesen will always stand for individuality and quality in a world where these ideals are increasingly compromised.

A Heesen will always be hand-built by craftsmen in Holland.

A Heesen will always be custom-built to combine the Owner's ideas with our expertise.

A Heesen will always be the highest denominator of performance and luxury.

A Heesen will always look like a Heesen because it performs like a Heesen.





sales@heesenyachts.nl

www.heesenyachts.nl

+31 (0) 412 665544

Rijnstraat 2, 5347 KL Oss

The Netherlands