







Iconic

Experience a world of sophisticated style, unsurpassed comfort and gracious service... experience the world from a legendary perspective. O'Mega defines the benchmark of luxury and sophistication for the most selective traveler. Travel in one of the worlds largest mega yachts which embraces you in its serenity and whispers with an unmistakable imprint of grace and timelessness. O'Mega awaits you... combining classic and modern design to create a sophisticated and stylish experience. At an astonishing 82.5 meters in length, O'Mega consists of 16 cabins lavishly accommodating up to 32 guests. Aboard the iconic O'Mega are 4 unique spacious decks, 2 luxury salons, 2 indoor and 2 outdoor dining rooms, 2 outdoor lounges, cinema room, fitness facilities, Jacuzzi, a variety of water sports, as well as 2 luxurious enclosed air-conditioned limousine tenders that elegantly transport up to 22 guests each to their desired destination. Embark upon a luxury vacation or host a corporate or private event of incomparable design and grandeur, where anticipation of individual preference is regarded with the utmost emphasis.







Serenity

Miles from land, O'Mega provides the perfect balance between style and soul. Whether you are looking to relax and unwind in perfect privacy or lavishly entertain guests, O'Mega is sure to elevate your seaside experience. A world of indulgences awaits you aboard O'Mega. If you wish to dine alfresco, O'Mega's luxuriously furnished sun deck is an ideal location to enjoy a meal graced by the ocean's breeze. The sun beds allow you to sunbathe, linger and indulge in a fine selection of refreshing summer snacks and cocktails in complete comfort and style. Need a break? Relax in the rejuvenating Jacuzzi or lounge in a cozy hammock. O'Mega's bridge deck offers a more secluded and intimate lounge. Kick back, relax, and enjoy a movie, show, or favorite sports team on a large flat screen television while enjoying the beautiful and scenic outdoors in your own private space. O'Mega's upper deck consists of a plush outdoor lounge, sophisticated dining area and bar perfect for entertaining guests in glamorous style. The main deck offers an additional spacious and lavish lounge where you can enjoy the tranquility of an afternoon sunset with a flute of champagne. For more private moments, O'Mega offers a stunning separate floating platform where you and your guests can enjoy being at one with the sea. O'Mega is one of the select mega yachts in the world that can create your very own private oasis in the deep blue sparkling sea.





Outdoor Jacuzzi
SUNDECK

Dining table
SUNDECK



▲ Hammock
SUN DECK



Love seats
BRIDGE DECK ▶



Outdoor lounge
UPPER DECK

Dining table - Bar
UPPER DECK



▲ Transformable platform

Outdoor lounge
MAIN DECK ▶





Grand

*R*evel in the sophistication and grandeur of O'Mega. Indulge in O'Mega's mahogany paneling, luxurious furnishings, handmade fabrics, and custom-made linens and carpets. The main deck combines elegance with luxurious amenities and services. From the plush seating area to its entertaining lounge, O'Mega offers unparalleled comfort and style. Celebrate, indulge, and relish in your love of fine food and atmosphere in O'Mega's dining area that seats up to 32 guests and offers world renowned gourmet cuisine from top chefs. The upper deck offers a more private and intimate living area with a large screen television. Relax and unwind with a game of chess or celebrate and sip fine cocktails at the elegant piano bar. O'Mega places you in the lap of luxury as service staff will anticipate your every need and accommodate your every wish.





▲ ?????????

VIP saloon ►





◀ Lounge
MAIN SALOON

Dining room ▶
MAIN SALOON



Lavish

O'Mega... where luxury living and world-class service are the standard for those of discerning taste. Consisting of 16 cabins, lavishly accommodating up to 32 guests, O'Mega is synonymous with the grace, elegance and comfort of the best of the world's mega yachts. The impeccable details of each guest room are exemplified by luxurious furnishings, paintings and custom-made linens. The grand master suite positioned at the front of O'Mega contains panoramic windows allowing privileged guests to savor breathtaking views at every turn. Laze in plush bathrobes on a luxurious king-size Tempurpedic bed or pamper yourself in the extravagant and spacious marble restroom that includes a Jacuzzi and shower. The master suite also contains a full closet and an executive desk for business. In addition to the master suite, O'Mega offers an executive cabin, 4 VIP cabins, 5 double cabins, and 5 guest cabins, each containing luxurious private restrooms finished off with the finest marble and fixtures. Unmatched services and amenities enhanced by today's foremost technology are truly unprecedented, as each cabin is equipped with a flat screen television, sound system, and wi-fi.





◀ Master bedroom
UPPER DECK



VIP Cabin
UPPER DECK





Executive Cabin
BRIDGE DECK



Guest Twin Cabin
MAIN DECK





◀ Guest Double Cabin
MAIN DECK



Bliss

Discover excitement and pleasure through unparalleled recreational opportunities aboard O'Mega. There is no shortage of activities available to excite your senses... whether it's fishing, snorkeling, scuba diving, kayaking, jet skiing, windsurfing or waterskiing, O'Mega's experienced staff will be there to provide needed assistance and ensure safety as you play beneath the warm summer sun. The extendable deck swimming platform affords easy accessibility to all water sports and creates your own luxurious private swimming area. Guests can also shape up their bodies and awaken their minds with available state-of-the-art fitness facilities. Ready to relax? Lounge in the luxurious Jacuzzi with a glass of your favorite wine or kick back in the cinema room that contains a 65 inch screen and comfortably seats 8 guests in La-Z-Boy armchairs. Guests can browse through the vast library of music and movies, play CDs and DVDs or watch satellite TV. Care to travel ashore in style? Step into one of O'Mega's 2 enclosed leather upholstered and air-conditioned limousine tenders that elegantly transports up to 22 guests in formal attire. O'Mega satisfies your desire for a truly distinctive experience, perfectly imbued with renowned style, attentive service and striking surroundings.









◀ Limousine tenders



▲ Gym
LOWER DECK

Cinema Room
LOWER DECK ▶



Specifications

Builder:	Mitsubishi Heavy Industries Co. Ltd.
Year:	1985 / 2004, Refit: 2009
Flag:	Greek
Classification Society:	Bureau Veritas
Length:	82.00 meters (269.02 ft)
Beam:	11.60 meters (38.05 ft)
Draft:	4.40 meters (14.43 ft)
Type:	Steel hull full displacement Motor Yacht
Design:	Giorgio Vafiadis & Associates
Displacement:	1975 tons
Speed:	13 knots cruising / 15 knots maximum
Stabilisers:	Rolls Royce / Brown Boveri (retractable)
Crew:	30

Communications

High Speed Wireless Internet through VSAT broadband service, Inmarsat C, Inmarsat MINI M, Inmarsat F77, VHF-DSC, GMDSS, Navtex Receiver.

Navigation

Integrated Navigation System Sperry Marine, Visionmaster FT S-Band Radar, Visionmaster X-Band Radar, SAAB AIS Transponder, Sperry Marine ECDIS Electronic Charts System, Flir Night Vision.

Watersports

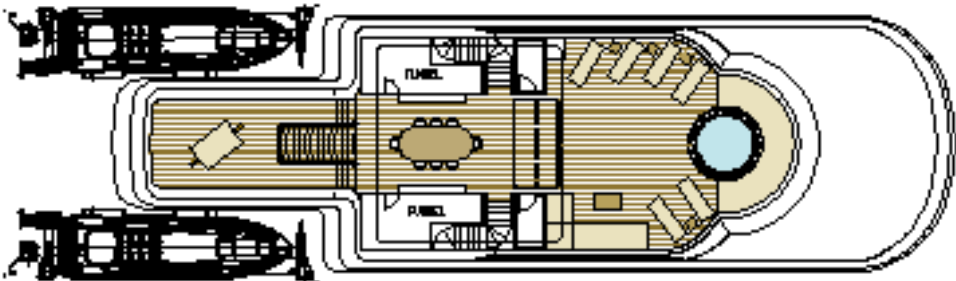
- 2 x 8.5 Meter Fassmer, enclosed limousine tenders
- 2 x Yamaha Jet Skis
- 1 x Nautica International 6 meters R.I.B. tender
- 3 x Sea Kayaks
- Water Skis, Wakeboards & Pull Toys
- Snorkel & Scuba Gear
- Retractable Swimming Platform

Accommodations

Sleeps 32 Guests in:

- 1 Master stateroom
- 1 Executive stateroom
- 4 double VIP suites
- 5 double guest cabins
- 5 twin guest cabins

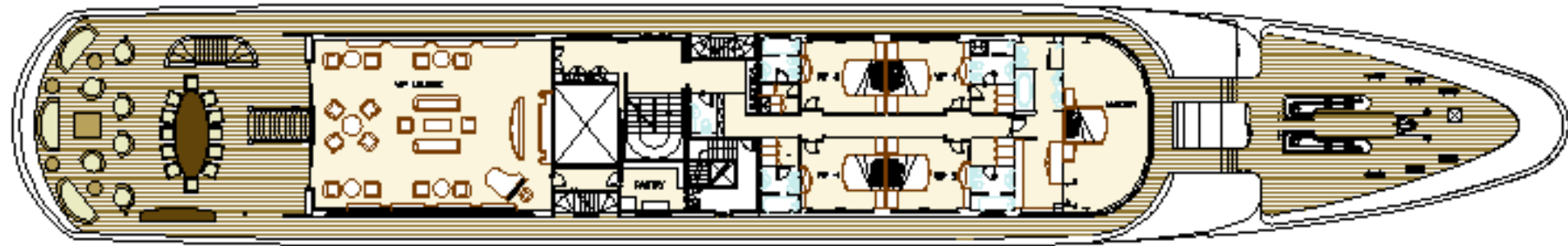
SUN DECK



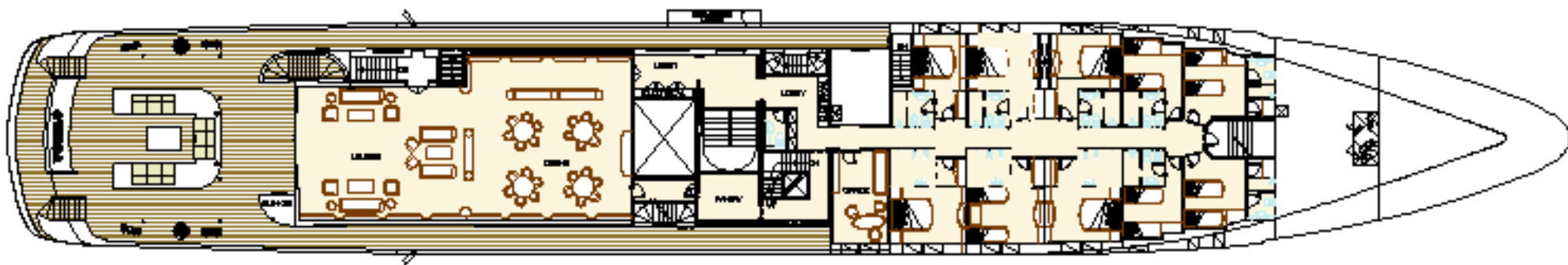
BRIDGE DECK



UPPER DECK



MAIN DECK



LOWER DECK

