

FOR CHARTER

OCEANOS

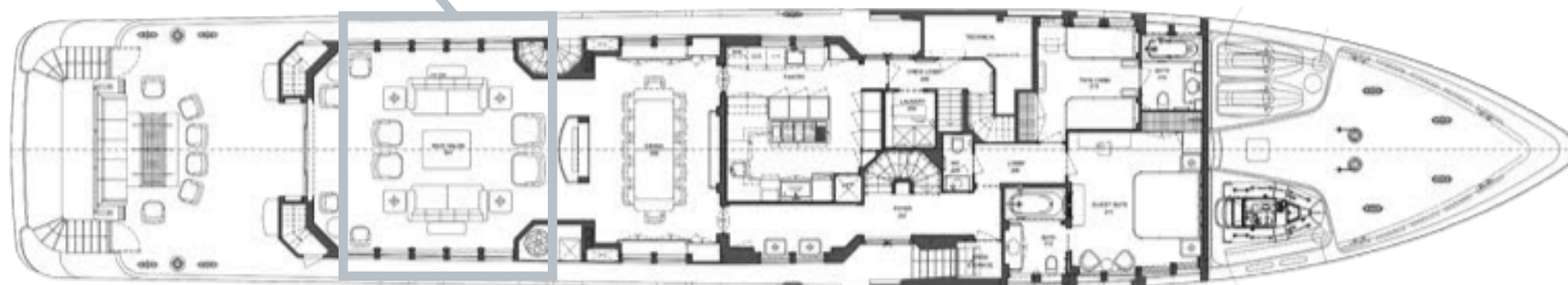


BUILDER	MONDOMARINE
BUILT / REFIT	2006 / 2021
BEAM	28' 6" / 8.69M
DRAFT	9' 2" / 2.80M
STATEROOMS	7
GUESTS	12
CREW	11
HULL MATERIAL	ALUMINUM
SPEED	13 KNOTS / 16
FLAG	JAMAICA



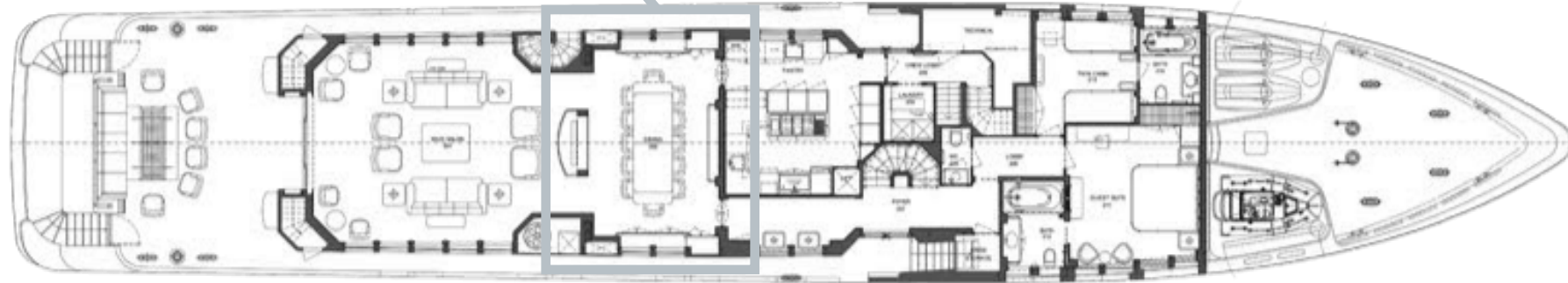
YACHT FOR CHARTER | OCEANOS | 161' 6" (49.23m) | MAIN DECK SALON

MAIN DECK SALON





MAIN DECK DINING

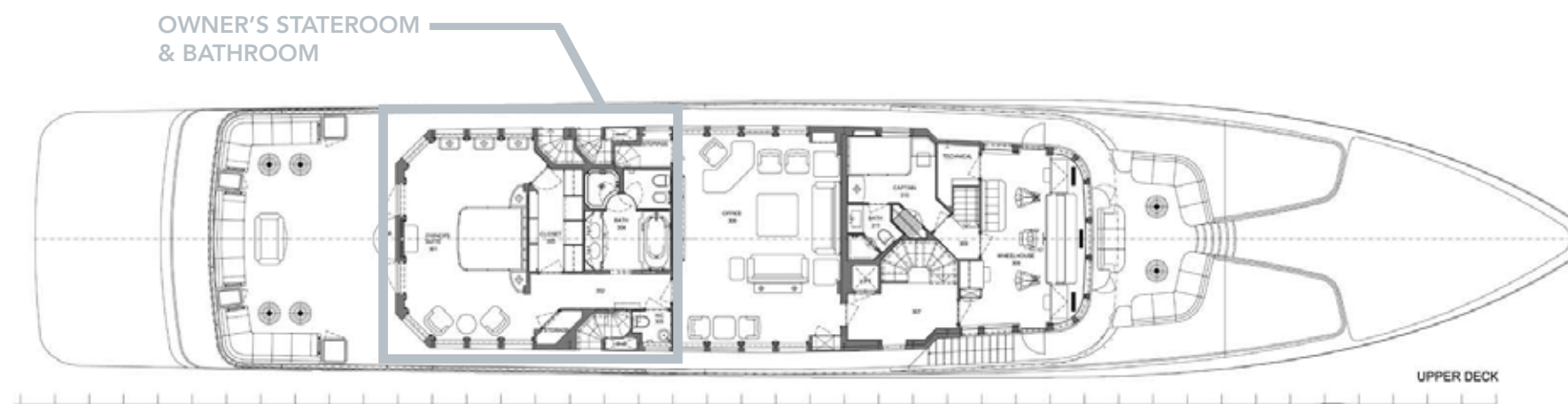


MAIN DECK





YACHT FOR CHARTER | OCEANOS | 161' 6" (49.23m) | OWNER'S STATEROOM & BATHROOM



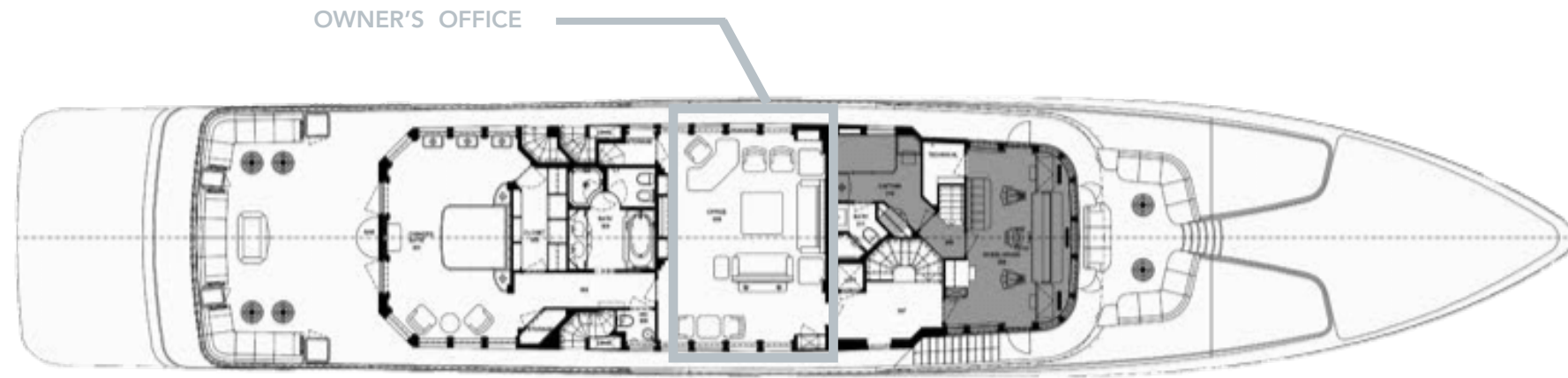
UPPER DECK







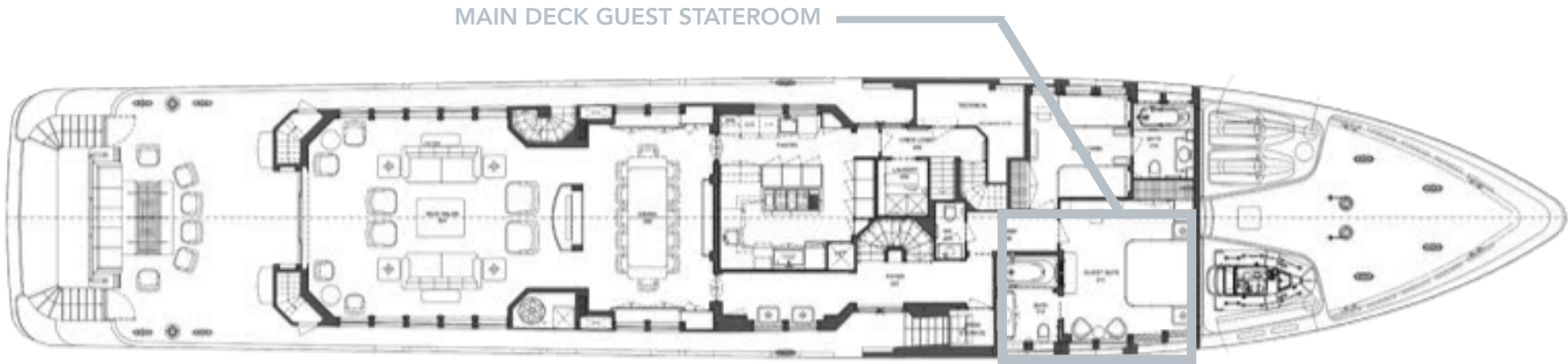




UPPER DECK







MAIN DECK

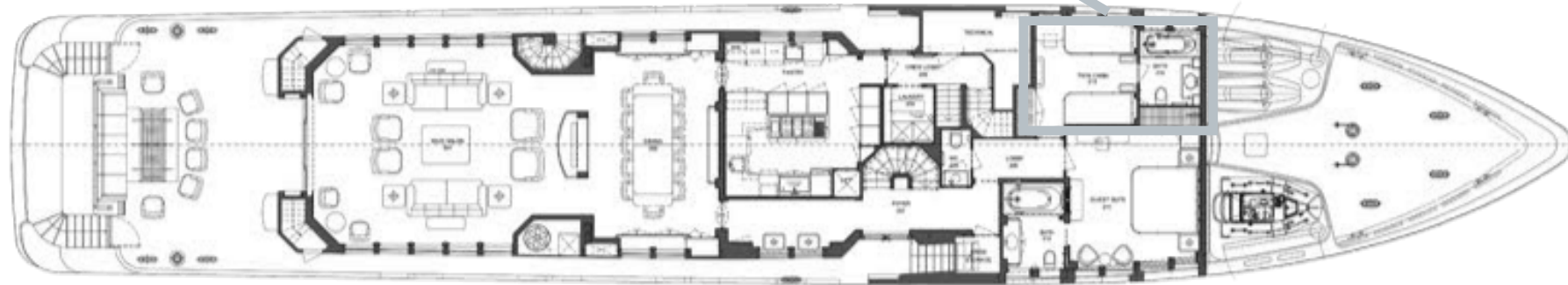






YACHT FOR CHARTER | OCEANOS | 161' 6" (49.23m) | MAIN DECK GUEST STATEROOM

MAIN DECK GUEST STATEROOM

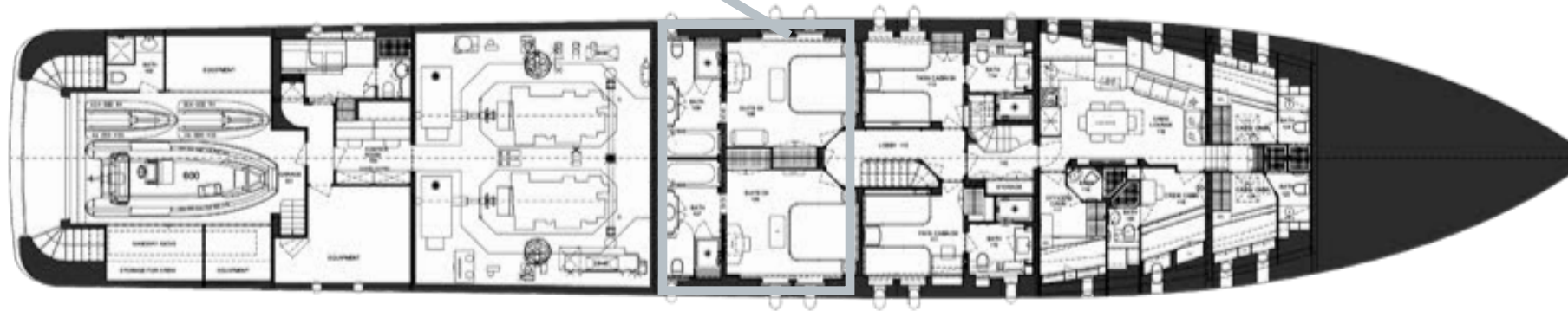


MAIN DECK



YACHT FOR CHARTER | OCEANOS | 161' 6" (49.23m) | LOWER DECK GUEST STATEROOMS

LOWER DECK GUEST STATEROOMS



LOWER DECK

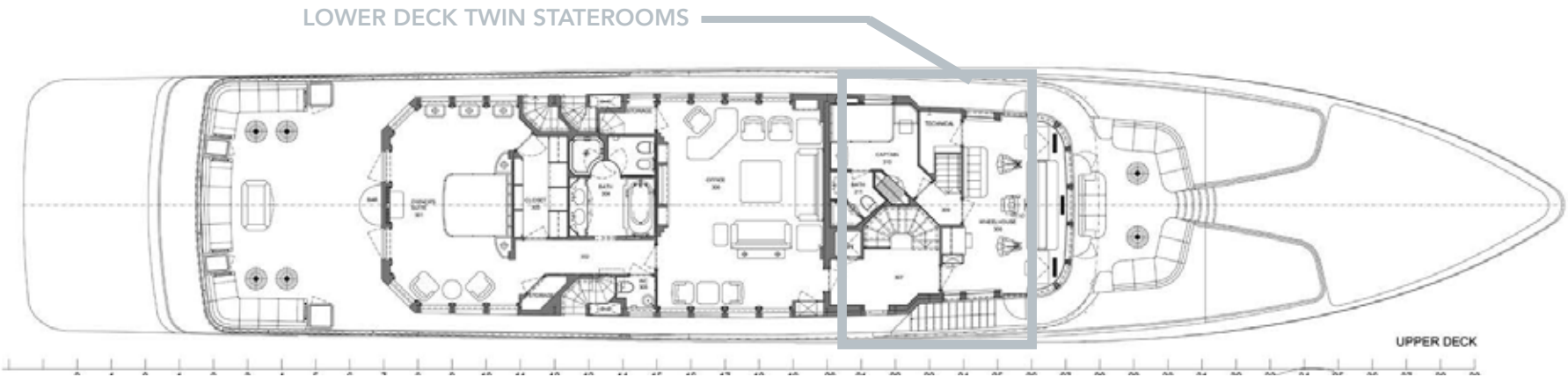




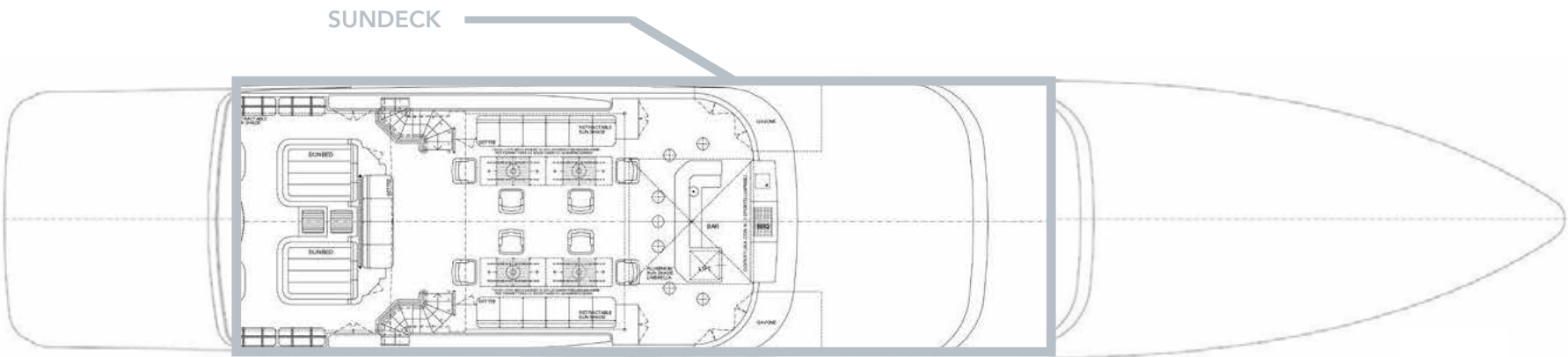




YACHT FOR CHARTER | OCEANOS | 161' 6" (49.23m) | LOWER DECK TWIN STATEROOMS







SUN DECK









YACHT FOR CHARTER | OCEANOS | 161' 6" (49.23m) | SUNDECK LOUNGERS



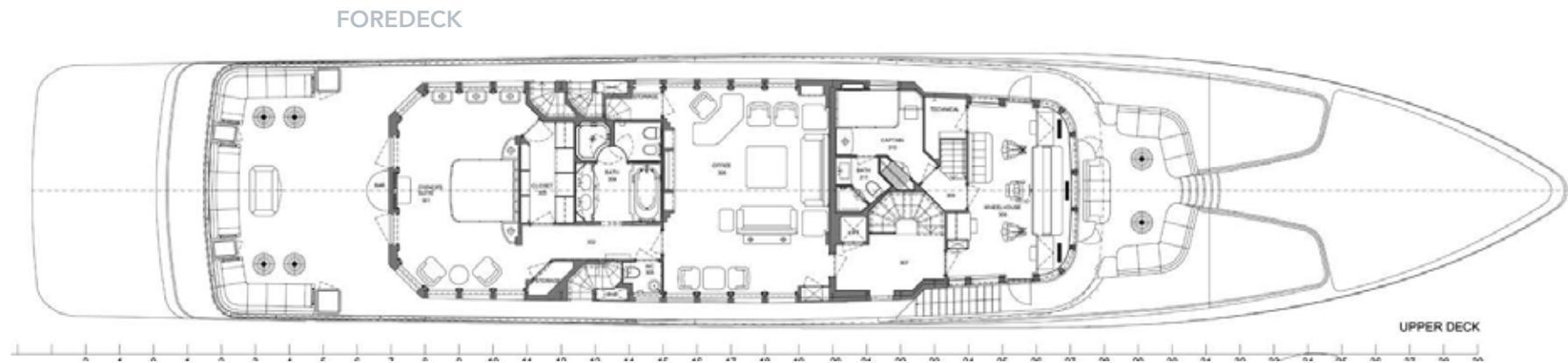
YACHT FOR CHARTER | OCEANOS | 161' 6" (49.23m) | SUNDECK LOUNGERS

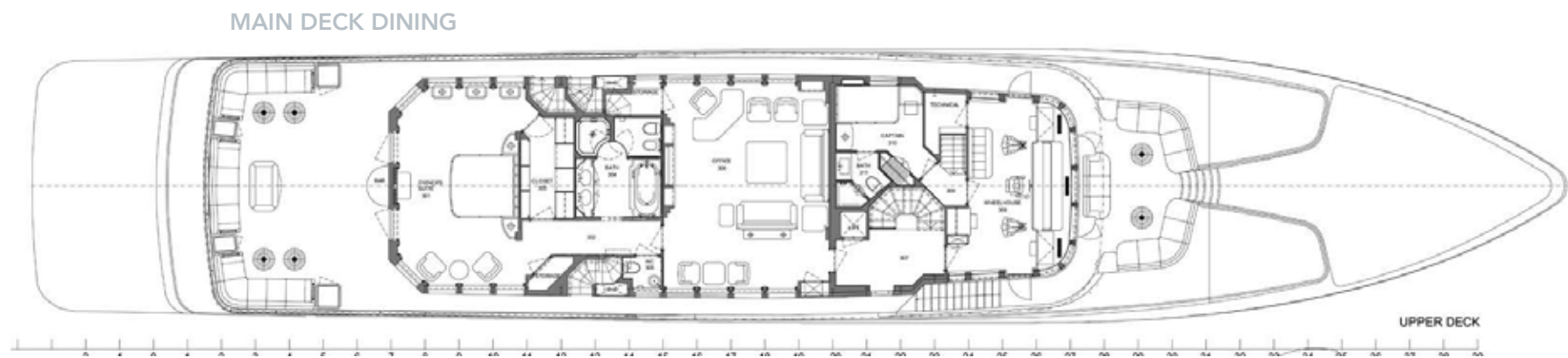






YACHT FOR CHARTER | OCEANOS | 161' 6" (49.23m) | FOREDECK SEATING













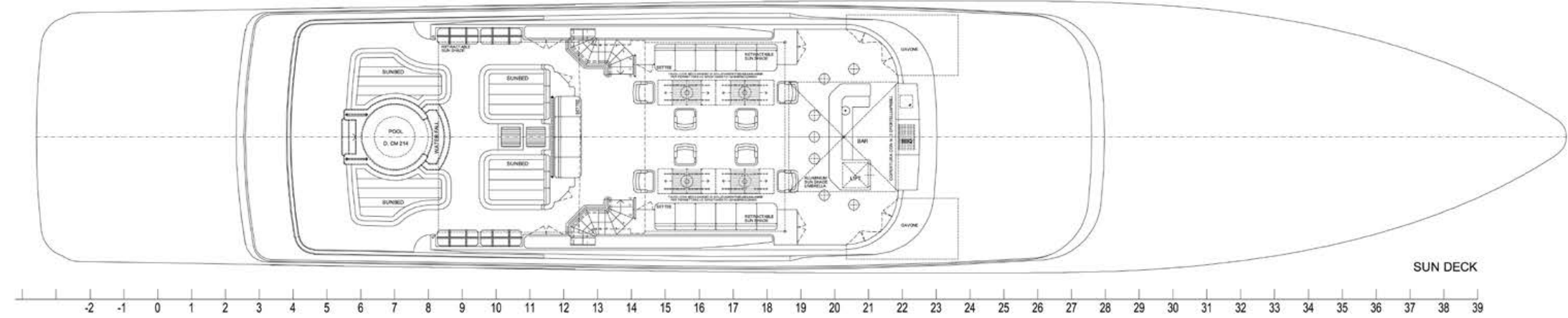
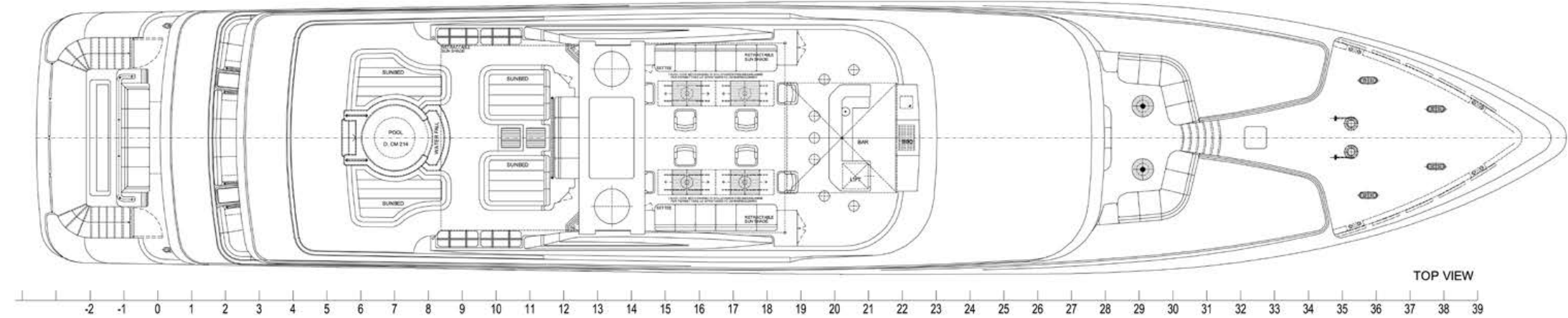
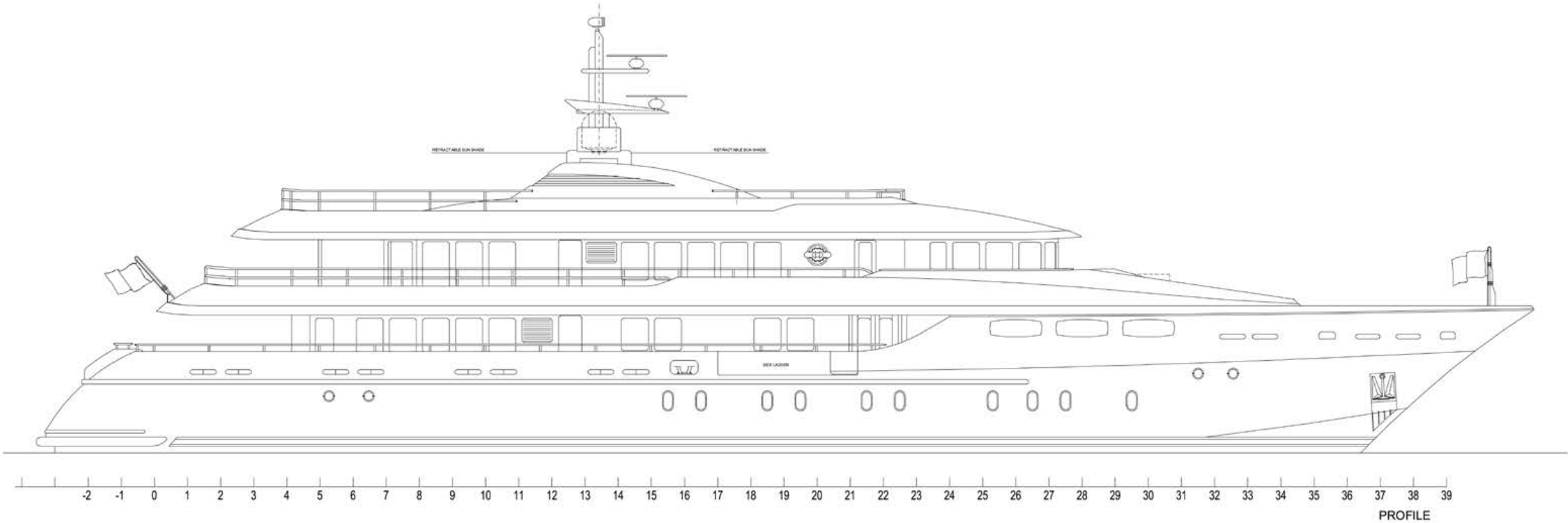




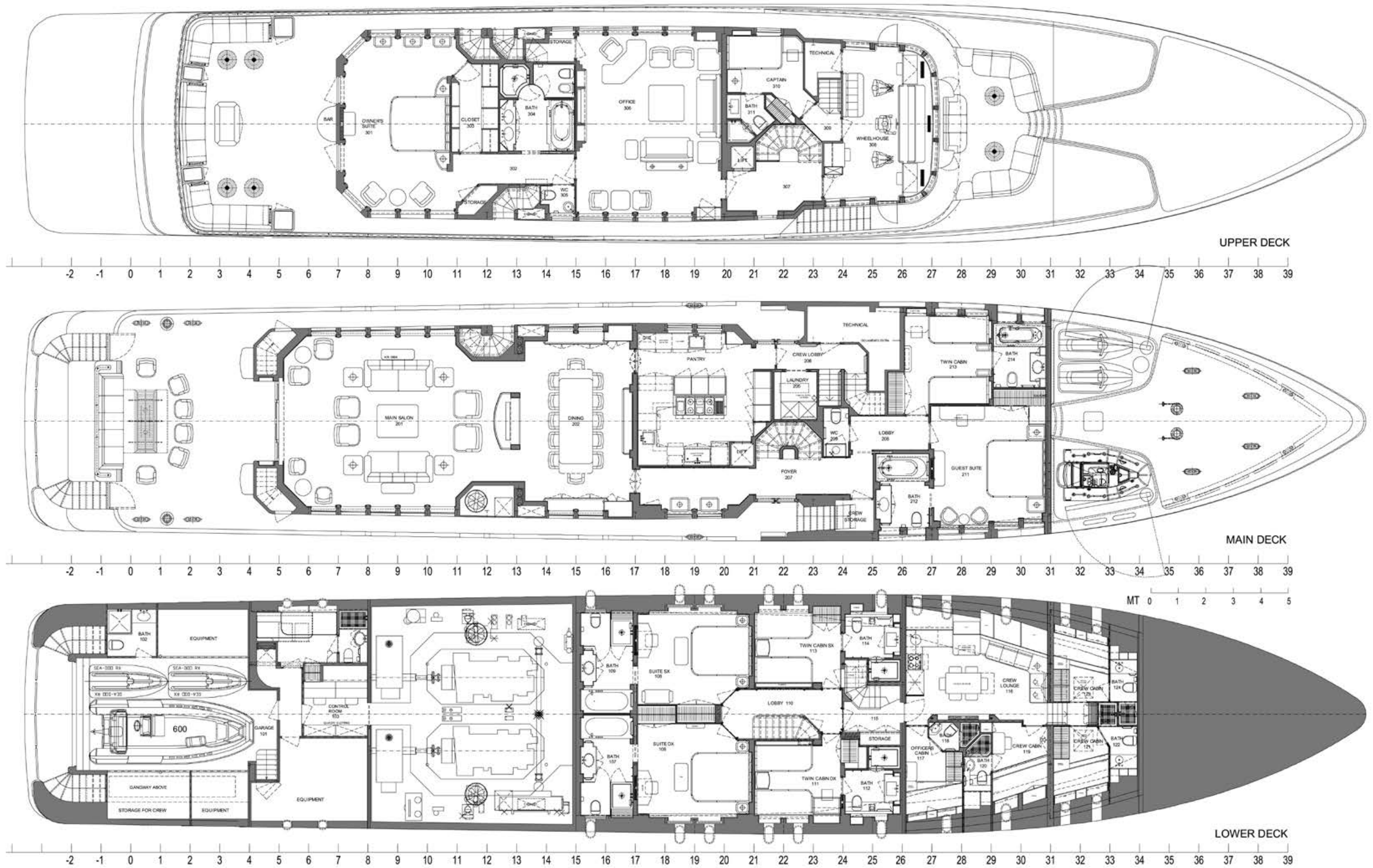
YACHT FOR CHARTER | OCEANOS | 161' 6" (49.23m) |



YACHT FOR CHARTER | OCEANOS | 161' 6" (49.23m) |



YACHT FOR CHARTER | OCEANOS | 161' 6" (49.23m) |



KEY FEATURES

Impressive, dedicated Owner's Suite on Upper deck
Total of 7 staterooms including main deck VIP
Sweeping Sun Deck with ample sunbathing areas and Jacuzzi
Clean Modern Interior
Great layout with large social and dining areas
2021 / 2022 Refit underway
Professional New Crew

ACCOMMODATIONS

12 Guests in 7 Staterooms
1 Master, 3 VIP, 3 Twin
Bed Configuration: 4 King & 6 Single

TENDERS & TOYS

2020 36' Aviara limousine style tender with 3 x 300 Mercury outboards
2022 AB hard bottom inflatable tender with 30hp Yamaha 4-stroke
2 x 2022 Yamaha EX Deluxe Wave Runners
2 x Fliteboard 100L
2 x Fliteboard Flyer Wing
3 x Seabob F5s
F5s Quick Charger
2x Tahe SUP Yak 10'6
2 x Bote HD Full Trax 10'6
Bote HD WS 10'6
2 x Nautibuoy Voyagers (800 & 525)
2 x Nautibuoy Boarding Ladders
2 x GoCycle G4
2 x Wakeboards
1 x Children's Wakeboard
1 x Mono Ski
1 x Children's Ski
5 x Towable tubes (various sizes)
Snorkeling equipment
Light Fishing equipment