



## NAILED IT

82' 1" (25M) | VIKING | 2017

# NAILED IT

---

## BASIC SPECIFICATIONS

### BUILDER

Viking

### FUEL TYPE

Diesel

### GROSS TONNAGE

104 GT

### CRUISING/MAX SPEED

24 knots / 30 knots

### ACCOMMODATION

8 guests in 4 cabins

### INTERIOR DESIGN

Joseph Dirand

### LENGTH

82' 1" (25m)

### BEAM

20' 7" (6.25m)

### HULL MATERIAL

GRP

### CREW

3

### FLAG

British Virgin Islands

### BUILT/REFIT

2017 / 2026

### DRAFT (F/M)

5' 7" (1.68m)

### ENGINES

2 x Caterpillar 1925 hp

# NAILED IT

---

## KEY FEATURES

- › SPACIOUS FOUR-CABIN LAYOUT OFFERING EXCELLENT ACCOMMODATION FLEXIBILITY FOR FAMILIES AND GROUPS
- › BRIGHT CUSTOM INTERIOR WITH EXPANSIVE SALON, HOME THEATRE, 65" POP-UP TV, BOSE ENTERTAINMENT SYSTEM
- › FAST AND COMFORTABLE CRUISING WITH 26-KNOT CRUISING SPEED, SEAKEEPER GYRO STABILISATION, HYDRAULIC BOW
- › EXPANSIVE FULL-BEAM MASTER STATEROOM WITH KING-SIZE BED, LARGE HULLSIDE WINDOWS, PRIVATE SEATING AREA, VANITY
- › IMPRESSIVE OUTDOOR COCKPIT SETUP WITH 150 SQ FT LOWER COCKPIT, MEZZANINE SEATING, SWIM PLATFORM, LIVEWELL/FISH
- › BASED IN THE EXCLUSIVE ALBANY, BAHAMAS

# NAILED IT

---

## WATER TOYS

- › TOWED TENDER: 2024 36FT YELLOWFIN WITH FORWARD AND AFT SEATING AND DIVE LADDER
- › 2 X LINDGREN PITMAN VARIABLE SPEED ELECTRIC REELS FOR HIGH SPEED TROLLING AND DEEP DROP BOTTOM FISHING
- › 2 X SHIMANO 30W ON CUSTOM RODS
- › 2 X SHIMANO SARAGOSSA 8000 SPINNING REELS ON CUSTOM RODS
- › BEACH TOYS AND FLOATS
- › 2 X INFLATABLE PADDLE BOARDS
- › 4 X SHIMANO TIAGRA 50W ON CUSTOM RODS
- › 2 X SHIMANO TLD 20 ON CUSTOM RODS
- › ASSORTED POLE SPEARS AND HAWAIIAN SLINGS
- › SNORKEL GEAR

NAILED IT



NAILED IT



NAILED IT



NAILED IT



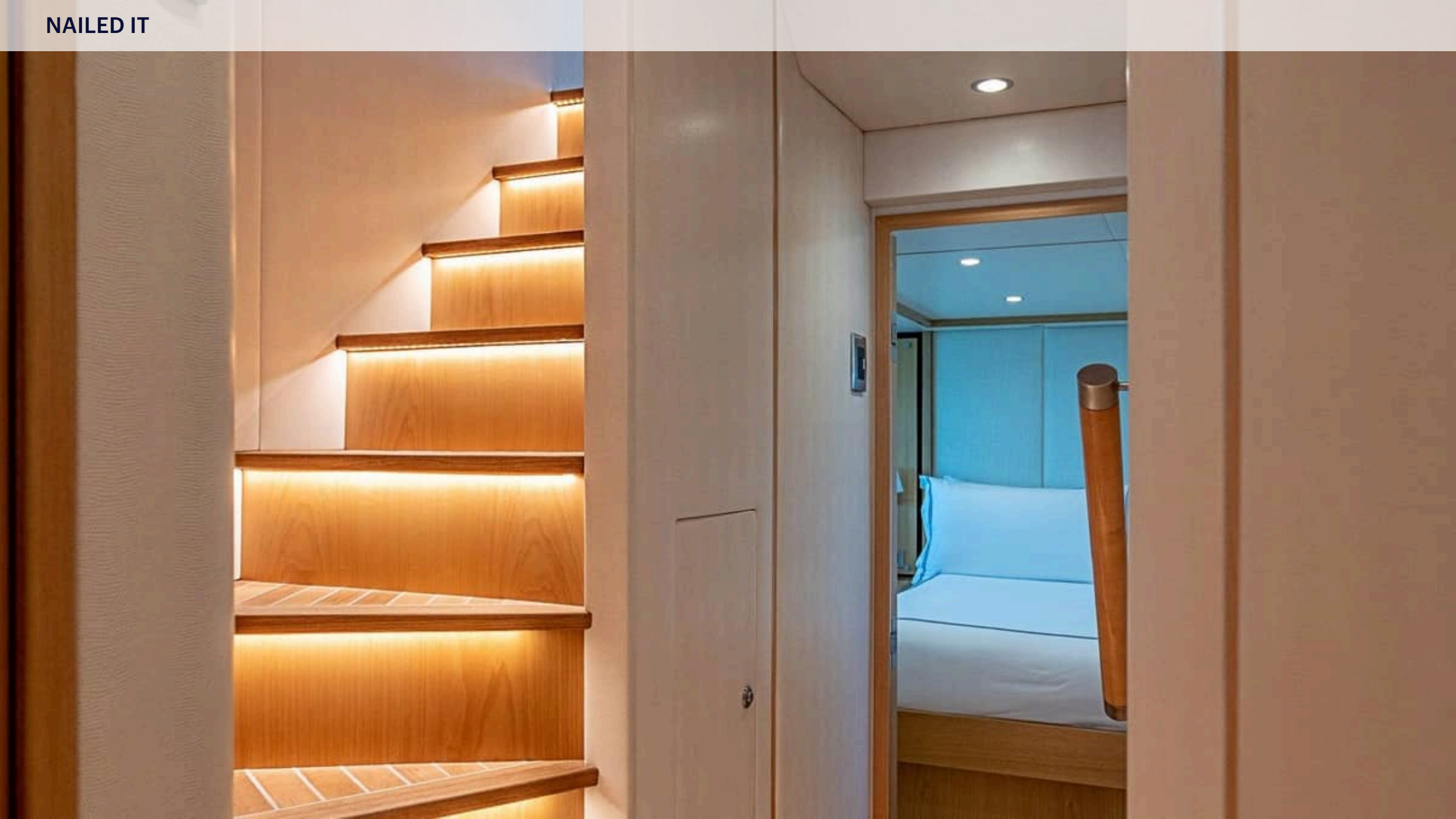
NAILED IT



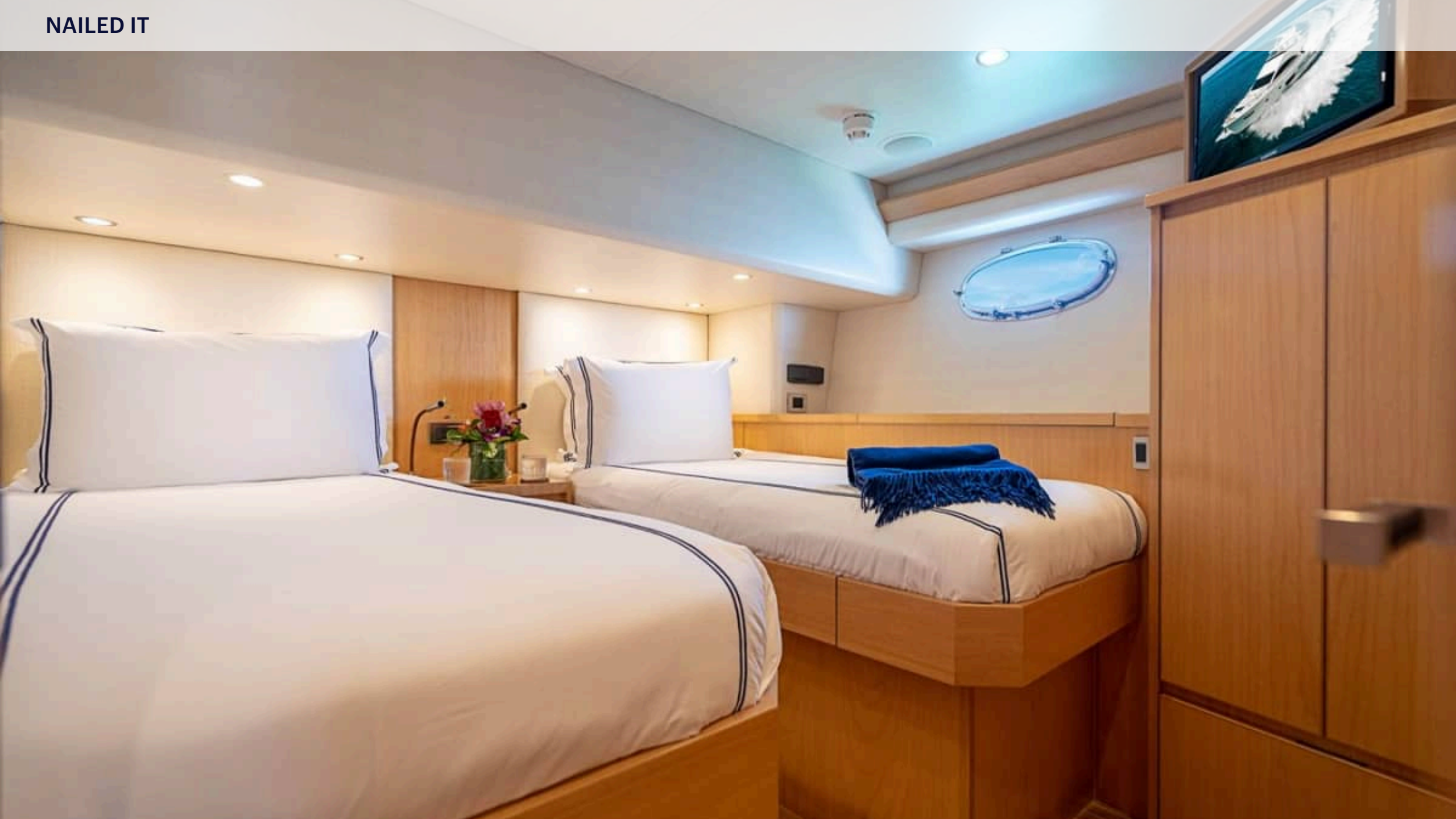
NAILED IT



NAILED IT



NAILED IT



NAILED IT



NAILED IT



NAILED IT



NAILED IT



NAILED IT



NAILED IT



NAILED IT







