



Mia Elise

EXCELLENCE ON THE WATER

Meticulous attention to detail defines the MIA ELISE. Built to exacting standards by a longtime yachtsman, the MIA ELISE is an inspired creation of both styling and oceangoing performance. Highly acclaimed interior designer, Patrick Knowles, worked closely with the owner to fulfill his vision of a refined yet inviting casual ambiance.

MIA ELISE's trendsetting interior showcases intricately handcrafted exotic woods throughout complementing the theme of subtle, neutral fabrics in a variety of textures. Paintings provide touches of vibrant color.

The main salon is separated from the dining salon by an island credenza. A Baby Grand digital player piano graces the aft entrance of the main salon. On the bridge deck, the contemporary skylounge is furnished with plush seating, a large wet bar with 3 stools and a game table.

The tastefully appointed, split-level master suite is located on the main deck forward with a private study at the entrance. The suite features deluxe his/hers bathrooms and a forward lounge. The VIP queen stateroom is located on the bridge deck with a fantastic view. Below, are four additional guest staterooms: three kings and one twin stateroom with a Pullman berth. All staterooms have cedar-lined closets with TV/DVD to enjoy the well-stocked movie library.

Careful attention to detail is also found on the exterior decks. The main deck aft is a raised veranda with walkaround for unobtrusive service. Port/starboard stairways lead down to the extended swim platform with lazarette where the tender and watersport equipment are stowed enabling complete use of the decks for guest relaxation and enjoyment. The skylounge deck aft is a popular location with *alfresco* dining for twelve and ample seating on the stern for sunset cocktails. The main deck aft and the bridge deck aft are equipped with optional overhead air-conditioning or heating.

The sundeck is a complete entertainment terrace. Located aft is the raised 12 person Jacuzzi specially designed for MIA ELISE with chaise lounges on the stern. Under the shade of the center hardtop is a large wet bar with a casual dining table. Forward is a huge sunbed area with port/starboard seating. Removable umbrellas offer cooling shade. Exercise enthusiasts will be delighted with the commercial grade treadmill and spin bike.

Zero speed stabilizers provide comfort while cruising or at anchor. VSAT/WiFi throughout ensures constant contact with home and office.



12 GUESTS / 6 STATEROOMS



MAIN
DECK AFT



SKYLounge
DECK AFT



SUNDECK



The huge custom Jacuzzi on the versatile sundeck - a brilliant total outdoor entertainment area.





MAIN SALON



DINING SALON



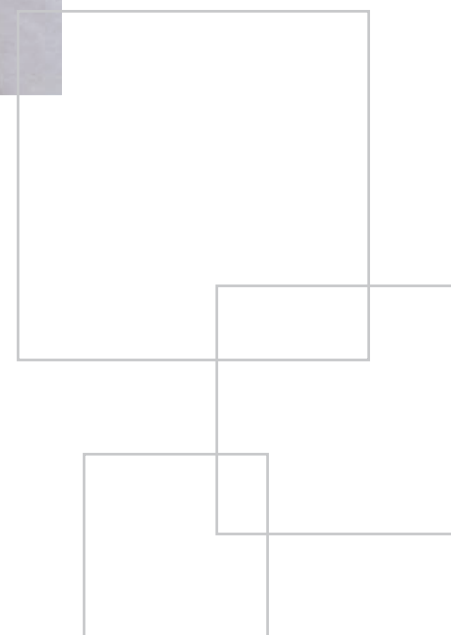
The signature urban chic styling of designer Patrick Knowles features inviting neutral tones and intricate details throughout.





For the connoisseurs aboard, fine wines are maintained at proper temperature in the wine cellar.

Mix and mingle with your guests in the cosmopolitan atmosphere of the skylounge.





SKYLOUNGE





MASTER STATEROOM



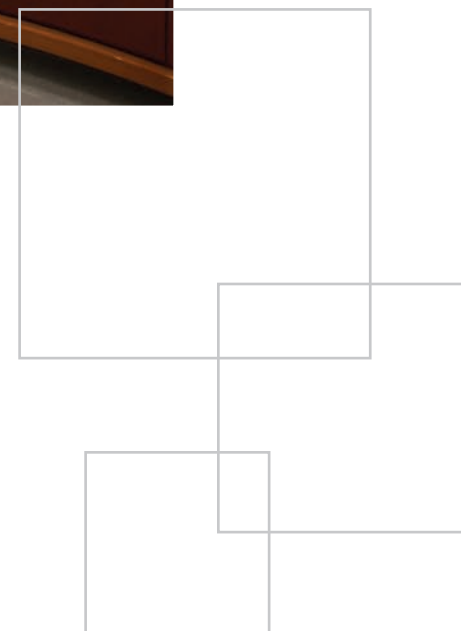


Relax in the sheer elegance of the impressive split-level master.





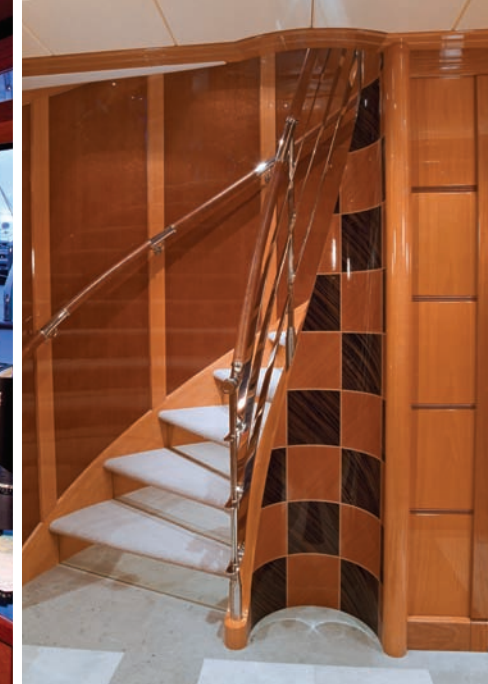
The five guest staterooms are beautifully appointed and include a queen VIP on the bridge deck, and below, three king suites and a twin suite with a Pullman berth.





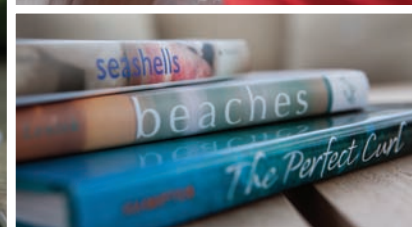
VIP QUEEN STATEROOM

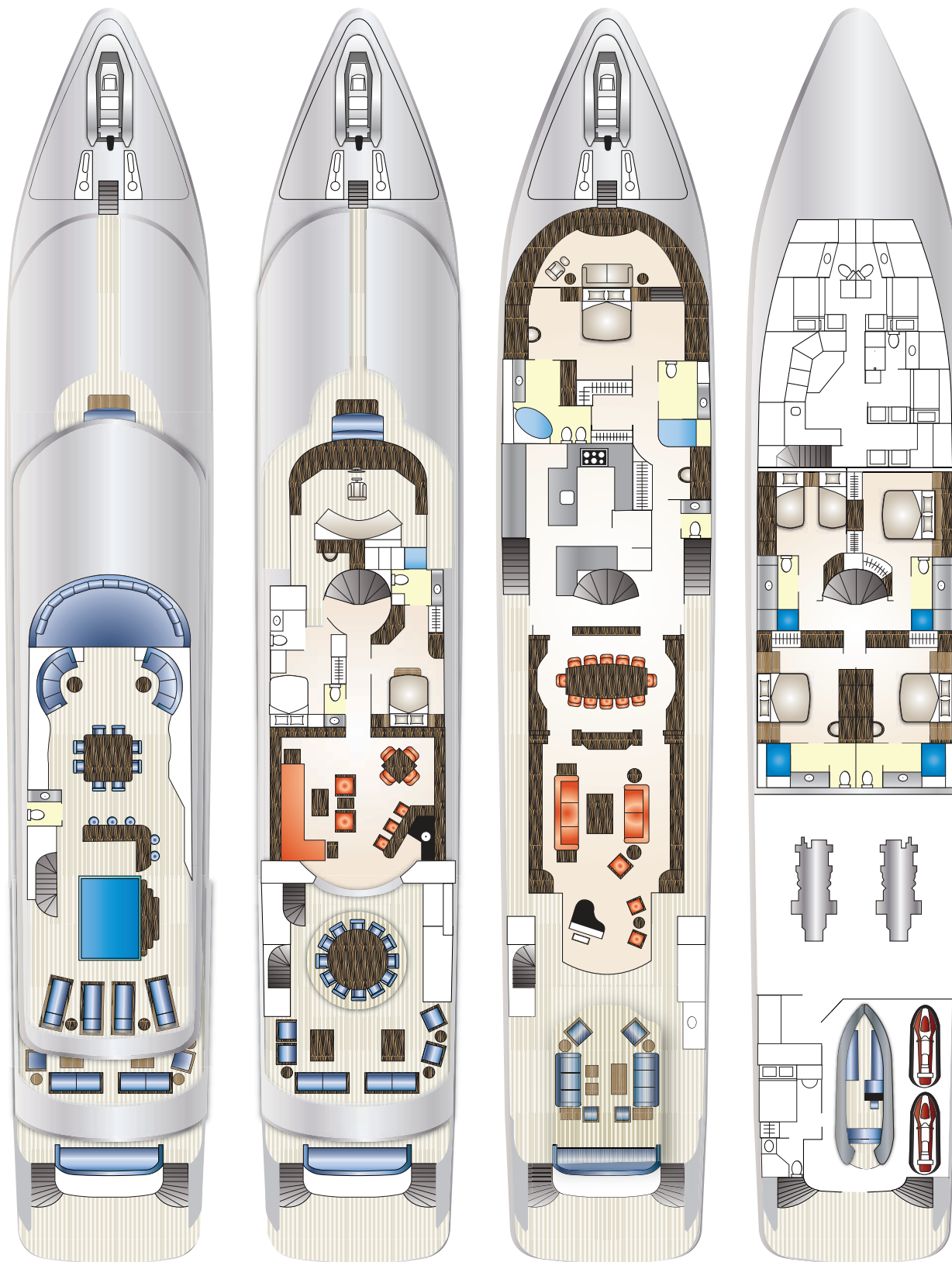




"A designer knows he has achieved perfection not when there is nothing left to add, but when there is nothing left to take away."

Antoine de Saint-Exupery





SPECIFICATIONS:

ACCOMMODATES 12 GUESTS IN 6 STATEROOMS:
FOUR KINGS, ONE QUEEN, ONE TWIN (+ PULLMAN BERTH)

LENGTH: 164' (49.9M)

BEAM: 28' (8.53M)

DRAFT: 8'6" (2.6M)

BUILDER: Trinity Yachts

YEAR: 2010

HULL CONSTRUCTION: Aluminum

HULL CONFIGURATION: Semi-displacement

INTERIOR DESIGNER: Patrick Knowles

FLAG: Cayman Islands

CLASSIFICATION: ABS Maltese Cross A1

Yachting Service, AMS

MCA Compliant

REGISTRATION: Commercial / VAT registered

CRUISING SPEED: 17 Knots

TOTAL CREW COMPLEMENT: 9 / 10

TENDERS & TOYS:

38' (11.58M) Tender (towed)

22' (6.7M) Novurania / 220 hp diesel

2 x 3-person Waverunners

Snorkel/Fishing Gear

Assorted Towable Toys

EXERCISE EQUIPMENT:

Treadmill, spin bike, free weights, etc.

AMENITIES INCLUDE:

Zero Speed (at anchor) Stabilizers

12-person Jacuzzi (1,000 gallons)

Wine cellar

VSAT / WiFi

iPod connections

Satellite TV / Surround Sound

Photos: ALEXIS ANDREWS & DANA JINKINS

Design and Production: IYC. Fort Lauderdale, FL 0811

INSPIRED DESIGN



EXPERIENCED VISION