



MARTITA

FOR CHARTER

S O P H I S T I C A T I O N & A D V E N T U R E

Built by Palumbo and launched in August 2022, 22.30m MARTITA is an ideal yacht for hosting chic, intimate parties, complete with a DJ console system, powered speakers, and a Sonos Platinum sound system.

MARTITA welcomes up to 8 guests overnight, 12 guests cruising and 20 guests in port. The beach club feeling onboard MARTITA celebrates every aspect of the fusion between a private beach club and a yacht, providing the finest moments and features that are hard to beat on any yacht of this size.

The full-beam sun pads (almost six metres wide) offer copious amounts of space for up to ten guests to sunbathe overlooking the extended swim platform. There is a full-length table to seat ten for a special al-fresco dining experience overlooking the ocean. While the private chef prepares a first-class cuisine in the open-style kitchen and bar, the guests can enjoy their favorite tunes spun from the DJ console.

Made for adventure, MARTITA features a fleet of toys for exploring the big blue, including a Williams SJ395 2025 Tender. Maximum comfort is provided thanks to the Gyro Seakeeper 22 Stabilizer.

FOR CHARTER



MARTITA



FOR CHARTER

MARTITA



SPECIFICATIONS

22.30M | PALUMBO | 2022



LENGTH 22.3m



NO. OF GUESTS 8/12



GUEST CABINS 4



BEAM 6.85m



MAX SPEED 21kts



RANGE 1100 nm



INTERIOR Hot Lab Yacht & Design

KEY FEATURES

22.30M | PALUMBO | 2022

- Accommodates up to 8 guests overnight, 12 guests cruising and 20 guests in port
- 50sqm beach club direct connection with DJ console
- Open style galley with a retractable window
- Impressive full-beam master stateroom
- Shallow draft allowing her to get closer to shore
- Updated exterior upholstery (it is now in deep teal colour - see page 36)

FOR CHARTER



MARTITA



SUNDECK

MARTITA





MAIN DECK AFT

MARTITA



MAIN DECK AFT

MARTITA



MAIN DECK AFT

MARTITA



MAIN DECK AFT

MARTITA



MAIN DECK AFT

MARTITA



MAIN DECK DINING AREA

MARTITA



MAIN DECK DINING AREA - OPEN STYLE GALLEY

MARTITA



MAIN DECK DINING AREA - CLOSED GALLEY

MARTITA



FOR CHARTER



MARTITA



FOR CHARTER



MARTITA







MAIN DECK SALON

MARTITA



MAIN DECK SALON

MARTITA



MAIN DECK SALON

MARTITA



BRIDGE

MARTITA





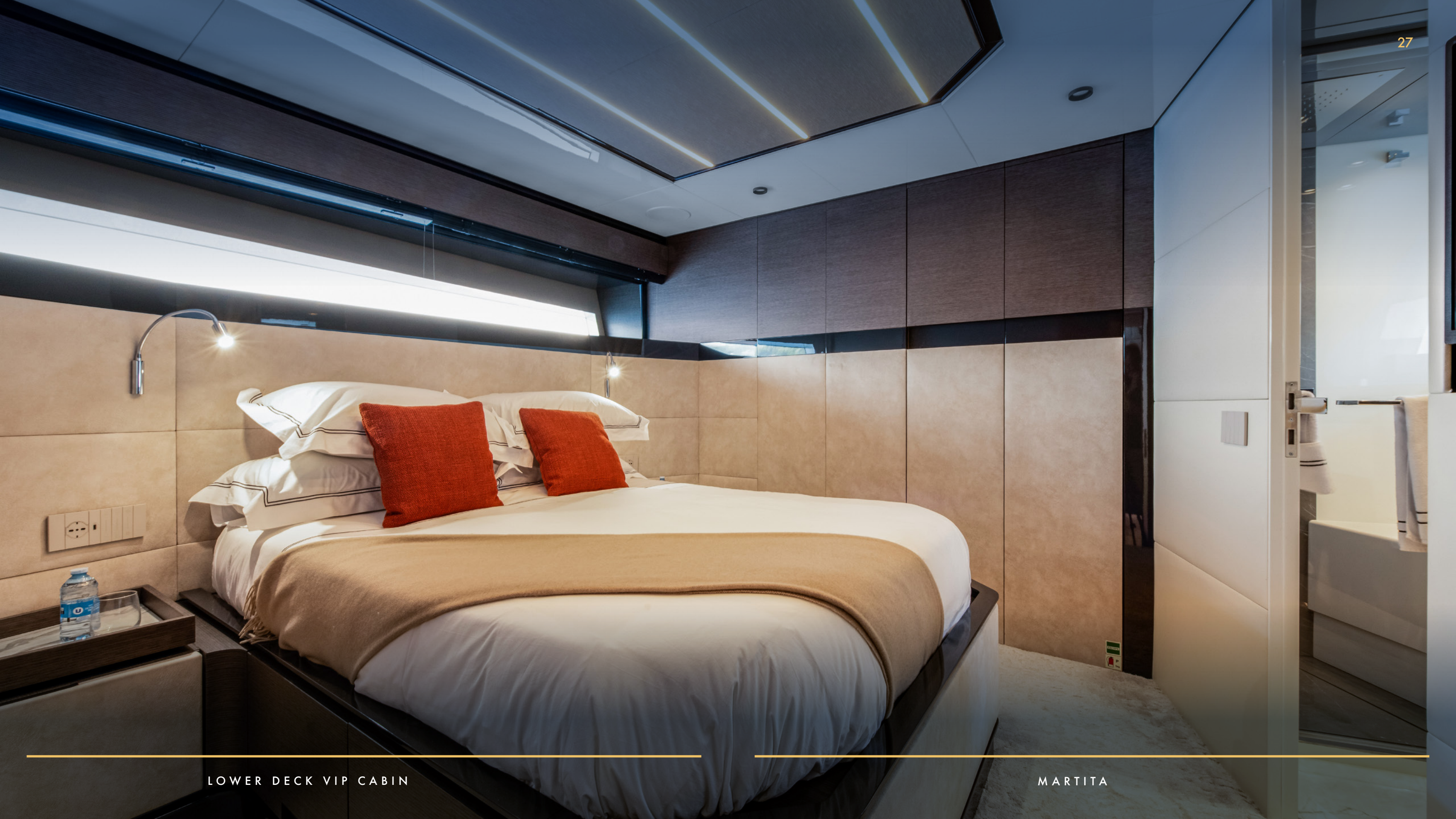
LOWER DECK MASTER CABIN

MARTITA



LOWER DECK MASTER BATHROOM

MARTITA



LOWER DECK VIP CABIN

MARTITA



LOWER DECK VIP CABIN BATHROOM

MARTITA



LOWER DECK TWIN CABIN 1

MARTITA



LOWER DECK TWIN CABIN 2 - BATHROOM



MARTITA

SEA YACHTS

FOR CHARTER

MARTITA

NEW EXTERIOR UPHOLSTERY

Please note, the exterior upholstery is now blue.



W A T E R T O Y S

22.30 M | PALUMBO | 2022

TENDER

- Williams SJ395 2025

TOYS

- 1 x Aquamarine Vapor Paddleboard
- 2 Person Towable Inflatable Bed
- 2 Person Towable Inflatable Tube
- 1 x Wakeboard
- 2 x Jobe Infinity Sea Scooters
- Snorkeling Gear

FOR CHARTER



MARTITA

S P E C I F I C A T I O N S

22.30M | PALUMBO | 2022

GUEST ACCOMMODATION

- 1 x Full Beam Master Suite
- 1 x VIP Cabin
- 2 x Twin Cabins

DECK FACILITIES & COMMUNICATIONS

- Starlink
- Dual internet 4G system
- DJ console system with powered speakers on both decks
- Sonos Platinum sound system
- Apple TV
- Salon, owner and VIP communications are controlled by an iPad
- Play Station 5

ENGINES & GENERATORS

- 2 x Volvo D13 1350hp
- 2 x Kohler 20.5 kw
- Range: 1100 nm @ 11 knots
- Cruising Speed: 14 knots
- Max Speed: 21 knots

TECHNICAL EQUIPMENT

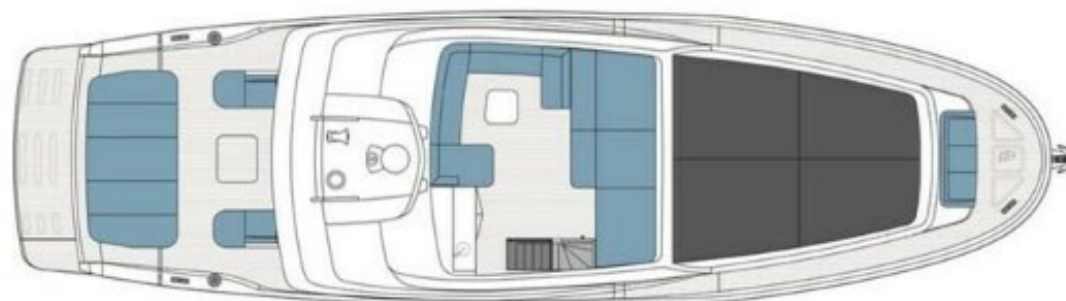
- Stabilisers at anchor: Seakeeper Gyro 22

FUEL CONSUMPTION

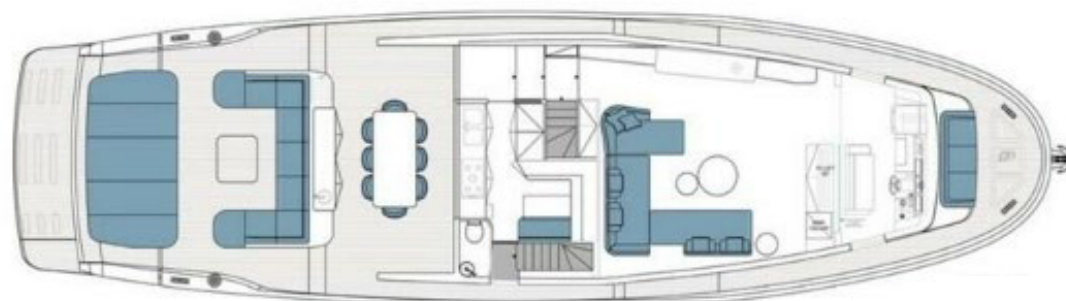
- - 1000 Rpm 34 Llitres 10kn
- - 1200 Rpm 60L 11,5 kn (eco speed)
- - 1400 Rpm 89L 12,5 kn
- - 1600 Rpm 165L 14 kn
- - 1800 Rpm 203 L 14,9kn
- - 2000 Rpm 266 L 17,5 kn
- - 2200 Rpm 341 L 21,5 Kn
- + 15L c/u generator

GENERAL ARRANGEMENT

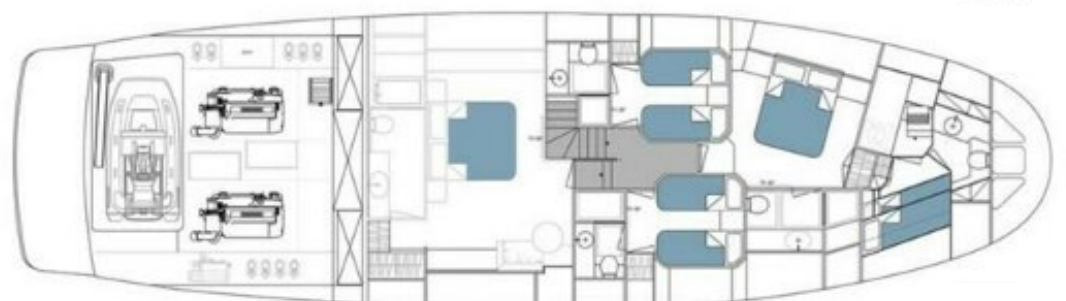
22.30 M | PALUMBO | 2022



FLY DECK



MAIN DECK



LOWER DECK