

M/Y MARQUISE

BROCHURE





M/Y MARQUISE

Adventure awaits *onboard* 72 metre MARQUISE! This one-of-a-kind superyacht yacht accommodates up to 28 GUESTS in 14 CABINS with an *impressive design, luxurious amenities, and exceptional features.*

A large white yacht is sailing on the open sea, viewed from an elevated rear-quarter perspective. The yacht has multiple decks and is leaving a white wake behind it. In the background, there are large, dark mountains under a sky with scattered white clouds. The overall scene is bright and scenic.

Just YOU...

and the *world*

EXTERIOR



M/Y Marquise





M/Y Marquise



SUN DECK



An area to INDULGE
in day and night, whether
you are *soaking* in the
GLORIOUS sun or
partying the night away.



BRIDGE DECK



This outdoor nook on the Bridge Deck, offers a more intimate setting, perfect for an afternoon coffee or drink with the SUNSET.



UPPER DECK

Whether you're savouring a GOURMET *breakfast*, *lunch*, or *dinner*, the upper deck *dining area* creates an unforgettable EXPERIENCE that is *sure to impress all*.





MAIN DECK



The *perfect spot* to ENJOY a *refreshing cocktail* while taking in the breath-taking VIEWS of the *surrounding water*.



INTERIOR



UPPER DECK
MAIN SALON

BRIDGE DECK
OWNER'S SALON





DINING
AREA



RECEPTION





GYM

HAIR SALON, HAMAM
& MASSAGE ROOM



CABINS

MASTER
CABIN









EXECUTIVE
CABIN



VIP
CABIN





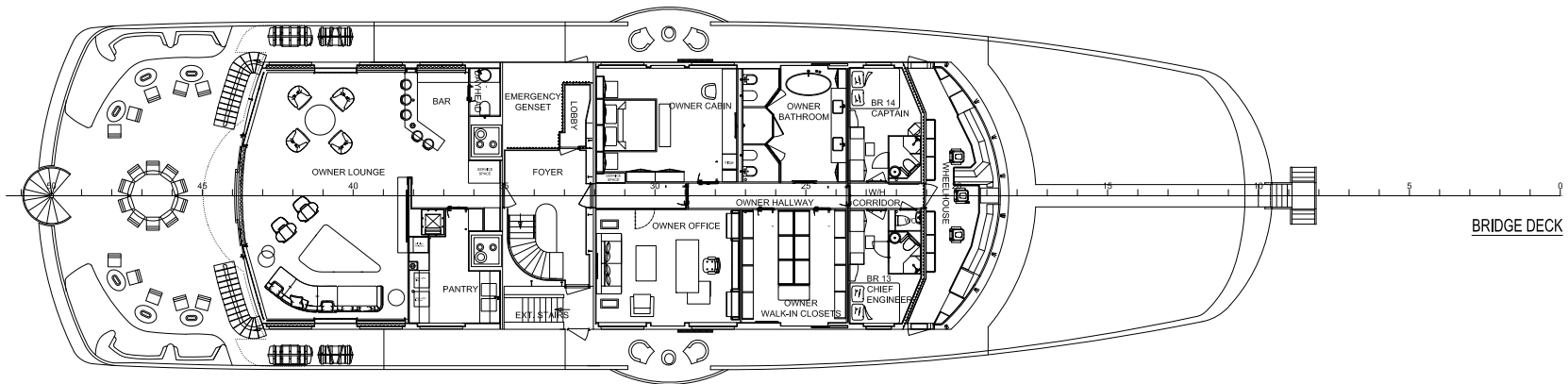
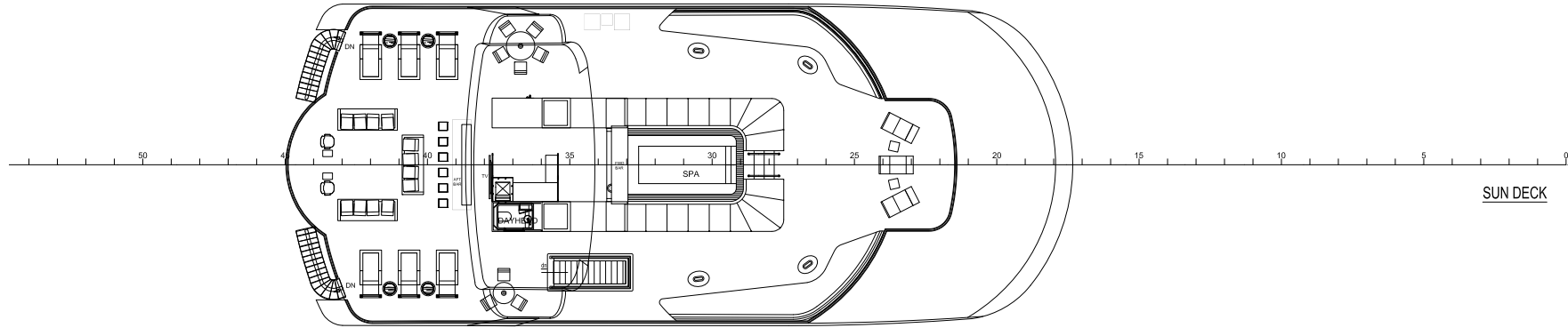
DOUBLE
CABIN



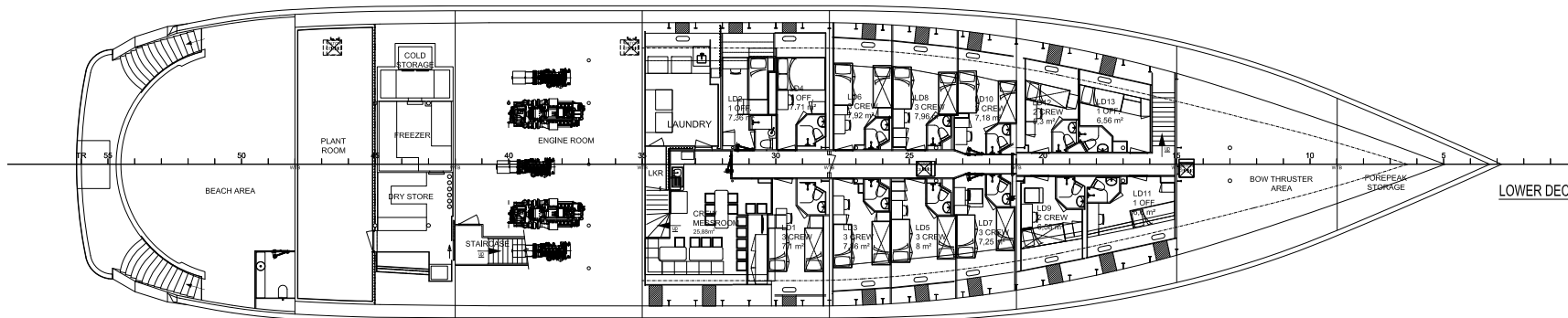
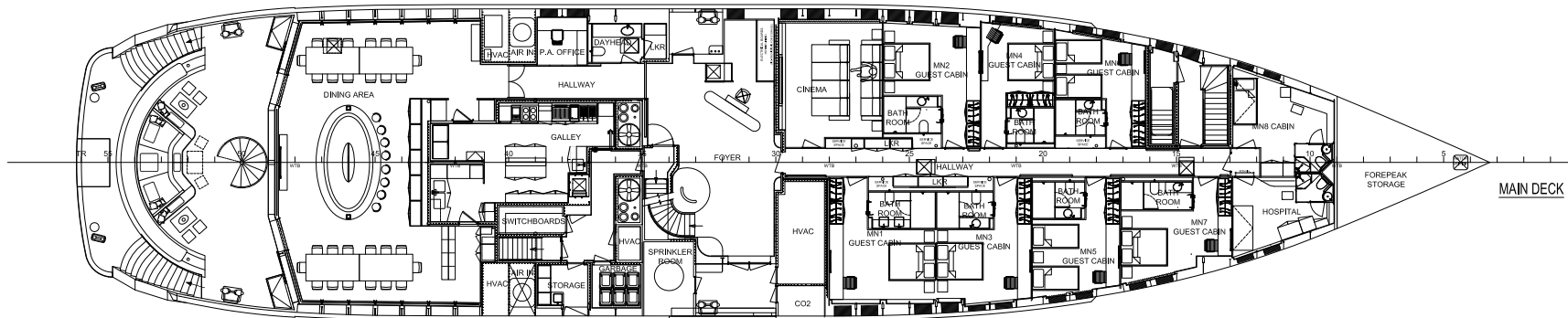
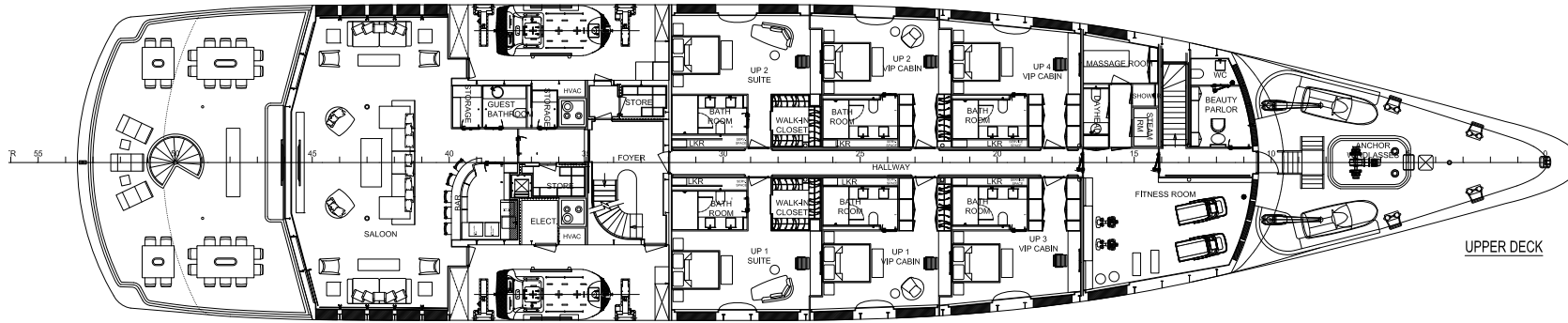
TWIN
CABIN



MARQUISE GA 1/2



MARQUISE GA 2/2



SPECIFICATIONS

Length	72 m (236' 3" ft)
Beam	13.80 m (45' 3" ft)
Draft	2.40m (7' 87" ft)
Built	2004
Reconstruction	2017
Builder	Austal
Flag	Greek

DISCLAIMER: This document is not contractual. All specifications are given in good faith and offered for informational purposes only. The publisher and company do not warrant or assume any legal liability or responsibility for the accuracy, completeness, or usefulness of any information and/or images displayed. Yacht inventory, specifications and charter prices are subject to change without prior notice. None of the text and/or images used in this brochure may be reproduced without written consent from the publisher.

ACCOMMODATION

Number of guests	28 + 2 Staff
Number of cabins	14 + 1 Staff
Cabin Configuration	1 Master, 6 VIP, 7 Guest, 1 Staff
Crew	28

PERFORMANCE

Cruising Speed	12.5 knots
Fuel Consumption	390 ltr/hr + 2,400 ltr/day
Main Engines	2 x 800KW/1070HP MTU 16V2000 M60
Generators	3 MAN D 2866LXE30

TENDERS & TOYS

— 1 x 10,5 m Tender
— 2 x 6,5 m Tender
— Jet Ski Seadoo GTX Limited-300
— Jet Ski Seadoo GTX-230 (X2)
— Seabob F5-S (X2)
— Flyboard Pro Series X-Armor 23
— Jet Surf Electric
— E-foil Lift4 Sport 4.9 (X2)
— Jobe Chaser Towable 4P
— Jobe Proton Towable 3P
— Jobe Airstream Towable 3P
— Jobe Rumble Towable 1P (X2)
— Jobe Duna 11.6 Inflatable Paddle Board Teal (X2)
— Jobe Prophecy Kneeboard
— Jobe Infinity Seascooter Pro Package (X3)
— Sea Raft Sea Pool 6.1x4.1m
— Sea Raft Boarding Swim Ladder
— Jobe Croft Inflatable Kayak (X2)
— Jobe Tasman Inflatable Kayak
— Jobe Winx Wakeboard Package 128
— Jobe Hemi Trainers
— Jobe Mode Combo Skis
— Jobe Mode Slalom Skis
— Jobe Allegre Combo Skis
— Jobe Transfer Ski Combo

Registered RYA training centre for personal watercraft

