

M/S Mar & Mar

This very elegant and famous 24 mt. Motor Sailer was the first gulet built in Bodrum with laminated hull. It also offers excellent sailing performance, in fact in 2000 it crossed the ocean to celebrate the new century in Copacabana.

The boat, which is offered to a selected and exclusive clientele only, has recently changed ownership. In 2021 she was completely renewed without losing the charm of her time which makes this M/S particularly attractive.

The cruise on Mar & Mar allows you to maximize your stay on board in total privacy and relaxation pampered by the excellent crew.



DESCRIPTION

| | | | |
|--------------------|--|-----------------------|---|
| Built/refit | 1994/2016/2021 | Speed | 9 knots (cruise); 11 knots (max) |
| Length | 23.86 mt | Generator | 1x 11 Kw + 1x 17.7 Kw (2012) |
| Beam | 6.28 mt | Generator consumption | 25 lt/hr |
| Draft | 2.13 mt | Guest cabins | 4 (1 Master, 2 twins, 1 dbl french bed) |
| Displacement | 71.30 ton | Max. guest number | 8 |
| Hull material | Lam. Mahogany epoxy | Guest bathrooms | 3 with shower cubicle |
| Deck material | Burma Teak | Crew | 3 (Captain, cook, deckhand) |
| Interior material | Mahogany | Fuel capacity | 5.000 lt. |
| Engine | 1x 450 Hp Man diesel | Fresh water capacity | 2.500 lt. |
| Engine consumption | 35 lt/hr (cruise speed) | Gray/Black water cap. | 2.100 lt. |
| Rigging equipment | Ketch Rig, Aluminium Spars, Stainless Steel Standing Rig, Furling Main and Mizzen, 2 headsails furling, Lewmar Sail winches (electrical), 4 Dacron Sails | | |
| Navigation eq. | Plotter, Wind station, Depth sounder and speed log, Bow thruster (hydraulic), GPS, VHF, Autopilot, Radar | | |
| Supplies | 4.20 mt. tender with 50 HP Yamaha outboard engine, WiFi, fishing gear (trolling and bottom fishing rods), mask & fins, 2x SUP | | |

The Gulet details are supplied by the boat owner and they could not be used for any contractual purpose.
The specifications are provided for information only.

M/S Mar & Mar



M/S Mar & Mar

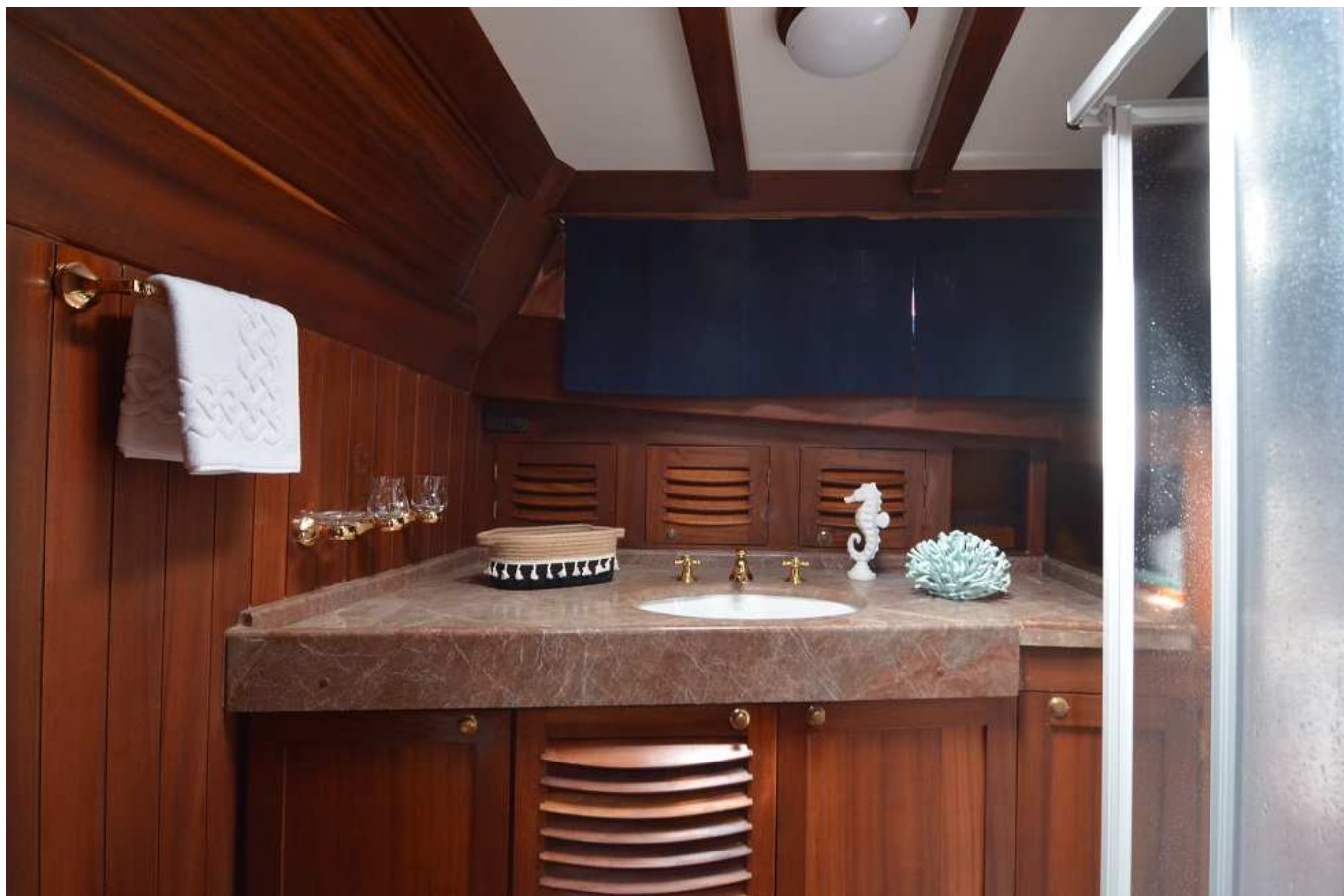


M/S Mar & Mar



M/S Mar & Mar





M/S Mar & Mar

