



MAJESTIC

MAJESTIC (MA•JES•TIC)

Possessing or displaying impressive beauty or dignity.





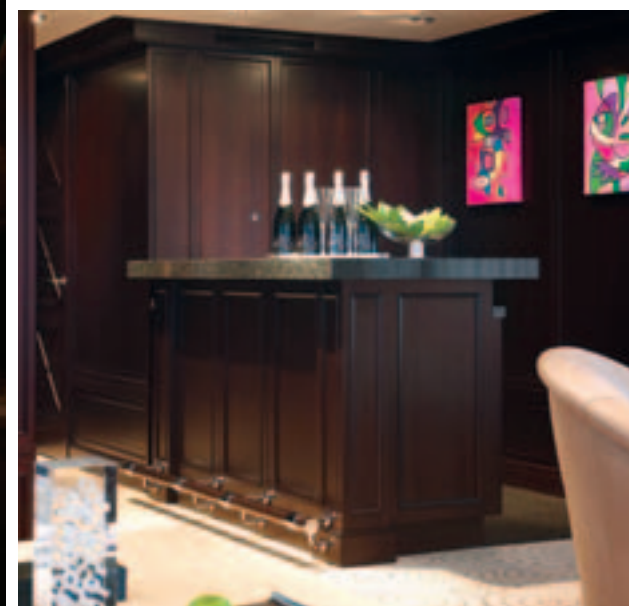
A WORLD OF CHOICES

Vast outdoor areas allow guests to choose a private retreat or gather for conversation, relaxation and recreation.



CLASSIC LUXURY, MODERN AMENITIES

The bridge deck provides a private vantage point for bird's eye views. The skylounge converts to a cinema with a 100-inch screen and over 800 movie titles on demand.









EXQUISITE DINING, FIVE-STAR SERVICE

Attentive service complements exquisite gourmet meals prepared by a talented chef. Dine in the richly appointed formal salon or al fresco for fine waterside dining.



CASUAL SOPHISTICATION

Guests feel welcome in the relaxed atmosphere of the spacious and airy interior.

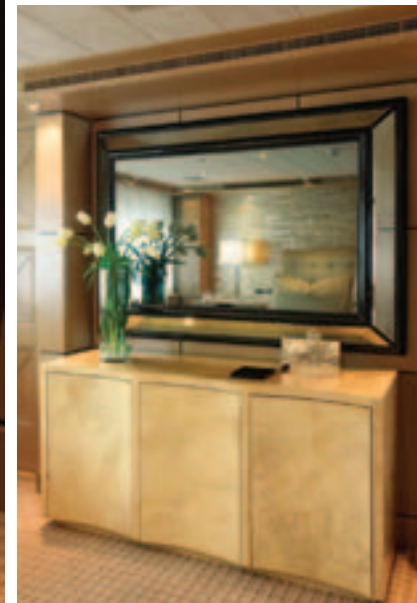






A MAJESTIC MASTER SUITE

The main deck master suite offers splendid views and exceptional space.



TWO LUXURIOUS VIP CABINS

Accommodations feature separate VIP staterooms, one on the main deck and one on the lower deck.









FOUR EN-SUITE GUEST CABINS

The guest lobby on the lower level leads to a full beam VIP stateroom, and four spacious en-suite double cabins. Majestic comfortably accommodates twelve guests in seven elegant cabins.



COMMAND THE SEAS IN STYLE

Majestic combines Feadship quality, at anchor stabilization and a proven hull, providing guests with a safe and secure voyage.









ADVENTURE AND WATER SPORTS

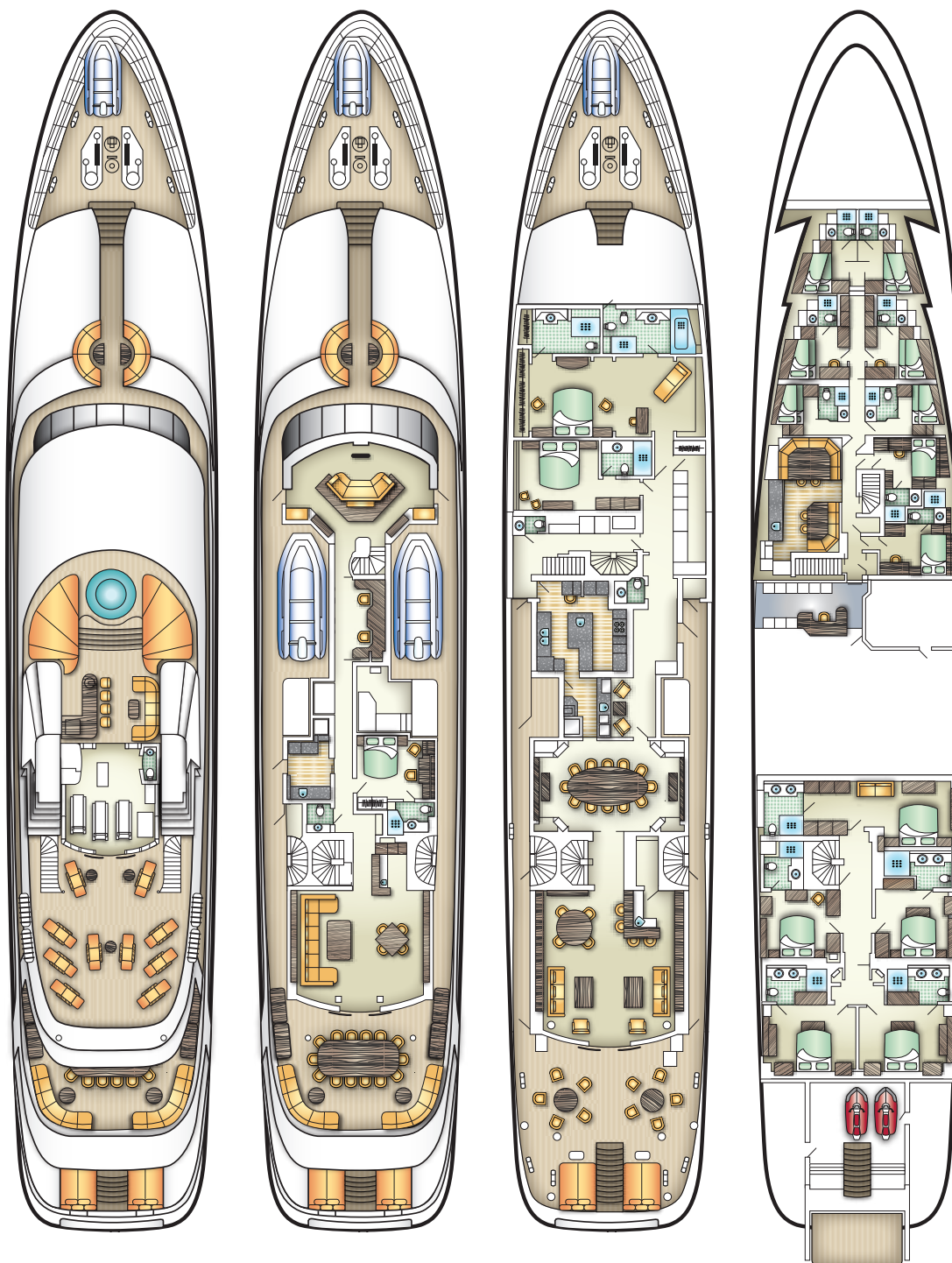
Majestic features a vast array of water sports equipment for adventuring above or below the surface.



THE MAJESTIC EXPERIENCE

Majestic provides a wealth of luxury and superb service in the most sought-after destinations.





MAJESTIC

SPECIFICATIONS

LOA: 61.2m (200'9") | **Beam:** 10.9m (35'9") | **Draft:** 3.3m (10'9")

Builder: Feadship (Van Lent) | **Interior Design:** Jim Harris

Staterooms: 7 (doubles) | **Guests:** 12 | **Crew:** 15

Engines: 2x CAT 3516 @ 2000hp (1492kw) ea

Generators: 2x CAT 200kw, 1x CAT 150kw
1x CAT Emergency Gen 80kw

Stabilizers: Koopnautic (at anchor)

Cruise Speed: 14 knots

Max Speed: 16 knots

Registry: Cayman Islands

Status: MCA LY2, ISM & ISPS

Classification: Lloyds ✕ 100A1, SSC, Yacht(P)

Construction: Steel / Aluminum Full Displacement

Amenities

- Novurania Chase 23 tender with 220hp IO *
- Nautica 24 tender with 225hp Outboard
- Zodiac Rescue Boat
- 2x Yamaha 3-Man Waverunners *
- 2x Hobie Kayaks
- Scuba equipment for 8
- Snorkel gear for 12
- Fishing gear
- Waterskis, wakeboards & towables

Gym Equipment

- 2x Treadmills
- 1x Elliptical cross trainer
- 1x Exercise bike *
- Ab cruncher & free weights

Communications & Entertainment

- VSAT with WiFi internet access throughout
- Fleet 77 & GSM telephone system
- Kaleidescape movie server with over 800 titles accessed from all TVs
- Satellite TV available independently on all TVs
- Projector cinema system with 100" screen in upper salon

* New in 2011







www.yachtmajestic.com