

E-BROCHURE

# Life Saga







LIFE SAGA is a 65m superyacht from Admiral, delivered in 2019 with only very light private use since, and won the prestigious Motor Yacht Over 60 Metres award at the International Yacht & Aviation Awards. Her bold design and seamless indoor-outdoor living create a refined setting for 12 guests, offering complete comfort and the freedom to explore in style.







MAIN DECK INDOOR/OUTDOOR SALON



MAIN SALON



MAIN DECK LOUNGE AREA

The interiors of LIFE SAGA, designed by Mark Berryman, carry a subtle Japanese influence. Natural materials such as oak, walnut and teak combine with soft cream furnishings, rich leathers and bronze accents to create a serene, elegant setting. Floor-to-ceiling windows fill the space with light and maintain a constant connection to the sea.





MAIN DECK





MAIN DECK MASTER SUITE





MASTER SUITE



MASTER ENSUITE BATHROOM



MASTER SUITE SALON





VIP CABIN ENSUITE BATHROOM

Accommodating up to 12 guests in six luxurious cabins, LIFE SAGA includes a full-beam Master suite on the main deck with panoramic views, a private lounge, office and marble bathroom. Additionally, she features a spacious VIP cabin on the upper deck, two elegant doubles on the main deck, and two convertible doubles on the lower deck.



VIP CABIN ON UPPER DECK





DOUBLE CABIN ON MAIN DECK





CONVERTIBLE DOUBLE ON LOWER DECK





UPPER DECK AFT





DINING AREA ON UPPER DECK





UPPER DECK AFT

The upper deck aft boasts a spacious lounge with modular seating, a formal dining table for 12, and an elegant sky lounge with bar and generous sofas. Guests enjoy spa facilities including hammam, sauna and jacuzzi, plus a wellness area for massages or workouts with direct water access.



UPPER DECK AFT





UPPER DECK SALON





WELLNESS CENTRE ON LOWER DECK











SUN DECK FORWARD





SUN DECK



SUN DECK



SUN DECK FORWARD





SUN DECK AFT





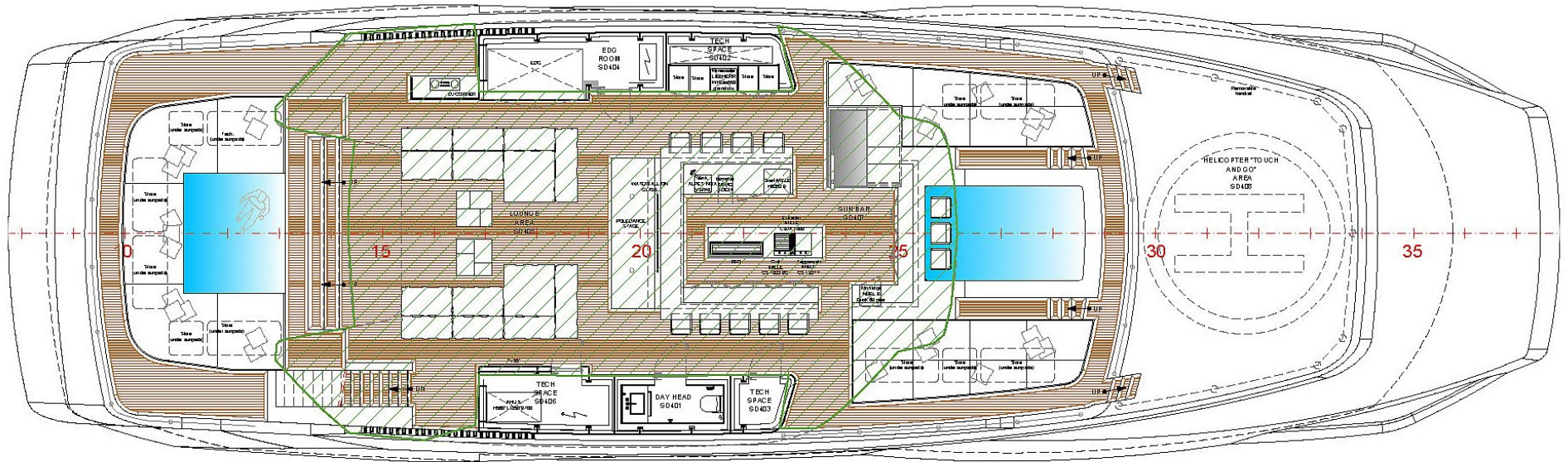
LIFE SAGA's four expansive decks offer sunbathing areas, jacuzzis, open-air dining spaces and panoramic lounges. The beach club features fold-down terraces extending over the sea, a shaded lounge by the water and an integrated swim platform providing effortless access to an array of water toys and tenders.



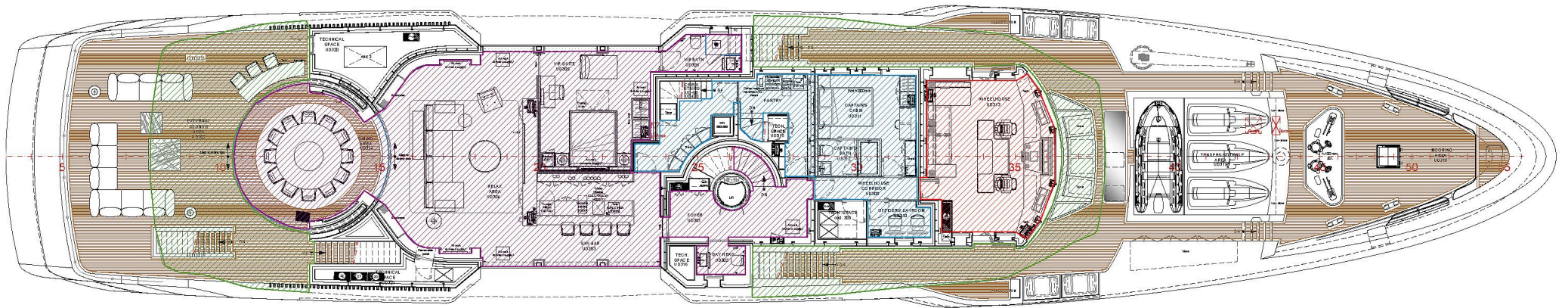






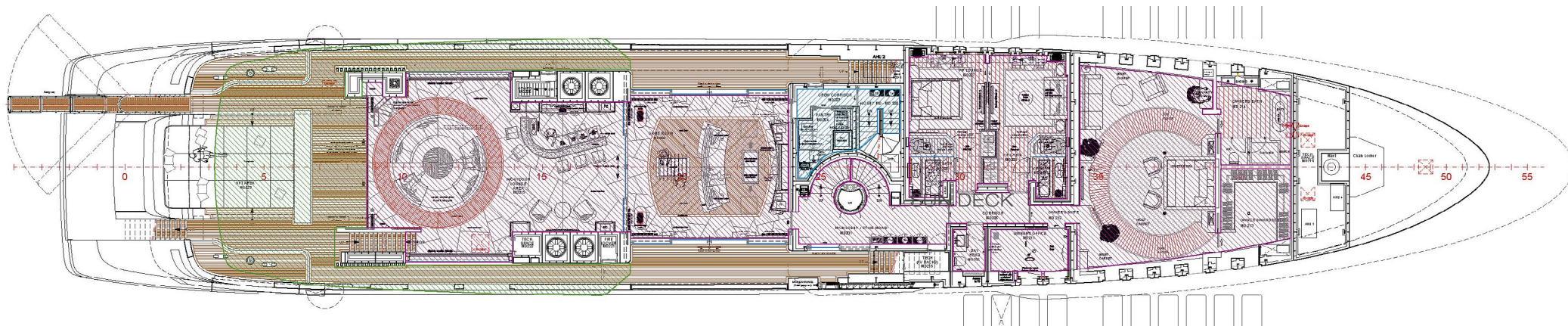


SUN DECK

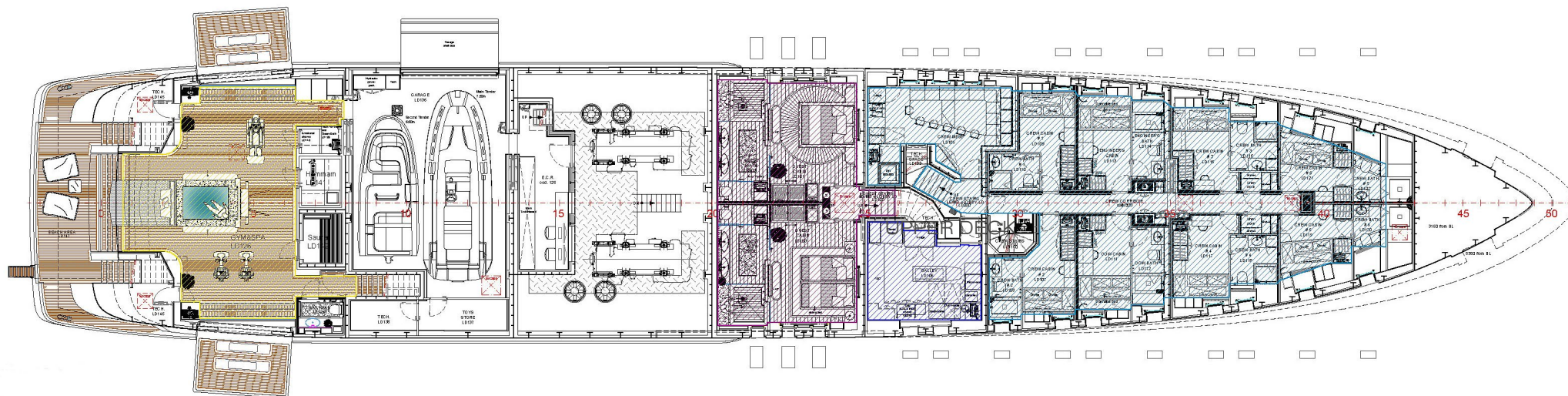


UPPER DECK





MAIN DECK



LOWER DECK





# SPECIFICATIONS

## MAIN CHARACTERISTICS

Length: 65.23 m (214')  
Beam: 10.60 m (34' 9")  
Draft: 3.05 m (10')  
Year: 2019/2025  
Builder: Admiral  
Interior Designer: Mark Berryman Design  
Accommodation: 12 guests  
Cabin Configuration: 4 Double, 2 Convertible (6 king beds)  
Total Guests Sleeping: 12 guests  
Total Guests Cruising: 12 guests  
Cruising speed: 13 knots  
Max Speed: 15,5 knots  
Fuel consumption: 500 Litres/Hr (cruising)  
Zero speed stabilizers - Stabilisers underway and at anchor

## TENDER

1 x 7.4m Ribeye Tender  
1 x 6.2m Ribeye Tender

## TOYS

3 x Seadoo jet skis  
1 x Flite board 100  
1 x Jobe wakeboard  
2 x Wake surf boards  
2 x Rigid paddle boards  
1 x Inflatable paddle board  
2 x Rigid Kayaks  
Tow toys (Banana, flyer/donut, sofa)  
Beach toys (Bats & Balls, frisbee etc)  
2 x F9 Seabobs (TBC)  
Dive equipment (7 x people)  
Snorkelling gear and fins

## GYM EQUIPMENT:

Bosu Ball  
Rowing machine  
Technogym weights  
Technogym bench  
Foam roller  
Peloton Bike  
Peloton mat  
Resistance bands  
TRX straps  
Yoga mats

## KEY FEATURES:

1. Multi award-winning yacht.
2. Incredible volume makes it feel like a much larger yacht
3. Stunning beach club with spa pool, built-in sun pads and a sauna
4. Spectacular double-height glass windows for uninterrupted views
5. Retractable glass partitions blend indoor and outdoor areas beautifully
6. Asian-inspired interior designed by Mark Berryman
7. Ideal for those looking to enjoy wellness at sea

Advertising of the above vessel in either printed publications on the internet or in any other medium is not permitted without prior permission from the Owner via the Central Agent.

All particulars are given in good faith and are believed to be correct but cannot be guaranteed.