



**JO I**

164' 1" (50M) | BENETTI | 2004

BASIC SPECIFICATIONS

BUILDER	FUEL TYPE	GROSS TONNAGE	CRUISING/MAX SPEED	ACCOMMODATION
Benetti	Diesel	496 GT	12 knots / 17 knots	12 guests in 6 cabins
INTERIOR DESIGN	EXTERIOR DESIGN	LENGTH	BEAM	HULL MATERIAL
Zuretti	Stefano Natucci	164' 1" (50m)	29' 3" (8.9m)	Steel
CREW	FLAG	BUILT/REFIT	DRAFT (F/M)	ENGINES
11	Maltese	2004 / 2022	9' (2.72m)	2 x MTU 12V 396 TE94

KEY FEATURES

- › EXPANSIVE SUNDECK FEATURING A SOPHISTICATED BAR, INDULGENT JACUZZI, AND GENEROUS SHADED LOUNGING
- › STATE-OF-THE-ART FITNESS CENTER WITH FULL GYM EQUIPMENT
- › UNMATCHED COLLECTION OF WATER TOYS, HIGHLIGHTED BY A WATERSLIDE
- › EXCEPTIONAL ACCOMMODATIONS, INCLUDING A MASTER SUITE ON THE MAIN DECK AND A VIP SUITE ON THE UPPER DECK
- › UPPER DECK CINEMA AMBIANCE WITH A PROJECTOR AND CLASSIC-STYLE JUKEBOX
- › CHIC BEACH CLUB SANCTUARY FOR RELAXING BY THE WATER’S EDGE
- › ELEGANT, CONTEMPORARY LIVING AREAS CRAFTED FOR ULTIMATE COMFORT AND STYLE
- › EXCEPTIONAL CREW OF 11 PERMANENTLY ONBOARD

## WATER TOYS

- |  |  |
|--|--|
| › TENDER WILLIAMS 565 JET WITH 250 HP YANMAR | › TENDER ZAR 53 WITH SUZUKI 140HP (2022) |
| › JET SKI YAMAHA FX CRUISER (3 SEATER)       | › JET SKI YAMAHA VX CRUISER (3 SEATER)   |
| › WATERSLIDE FUNAIR 8M                       | › 2 X SEABOB F5 (2024)                   |
| › E-FOIL TAKUMA CRUISING (2022)              | › 2 X E-FOIL LIFT 5'4 CRUISER (2022)     |
| › FLYBOARD PRO SERIES (2023)                 | › 2 X INFLATABLE KAYAKS                  |
| › 2 X INFLATABLE SUP                         | › INFLATABLE WATER STEPPER BOARD         |
| › WAKE FOIL BOARD (ADJUSTABLE FOIL LENGTH)   | › KNEE SURFBOARD                         |
| › WING FOIL (2023)                           | › 2 X GYRO TUBES (1P)                    |
| › 2 X DONUTS (1P)                            | › 2 X SOFA (3P & 4P)                     |
| › HOT DOG (6P)                               | › SWITCH (2P)                            |

## WATER TOYS

- › REVOLVE (2P)
- › MONO SKI CONNOLLY
- › BABY SHARK (3-5 YO KIDS)
- › 2 X WAKEBOARDS CWB
- › SNORKELLING EQUIPMENT
- › KITE SURFING AND WIND SURFING (AVAILABLE UPON REQUEST)
- › MONO SKI ELITE O'BRIEN CARBON
- › TWIN SKI (ADULTS, KIDS, TRAINER) CONNOLLY
- › WAKEBOARD O'BRIEN VALHALLA 143
- › FULL BEACH SET-UP SET WITH CHAIRS, UMBRELLAS, SUN BEDS, BLUETOOTH SPEAKERS ETC.
- › FISHING EQUIPMENT (INCLUDING SPEAR)





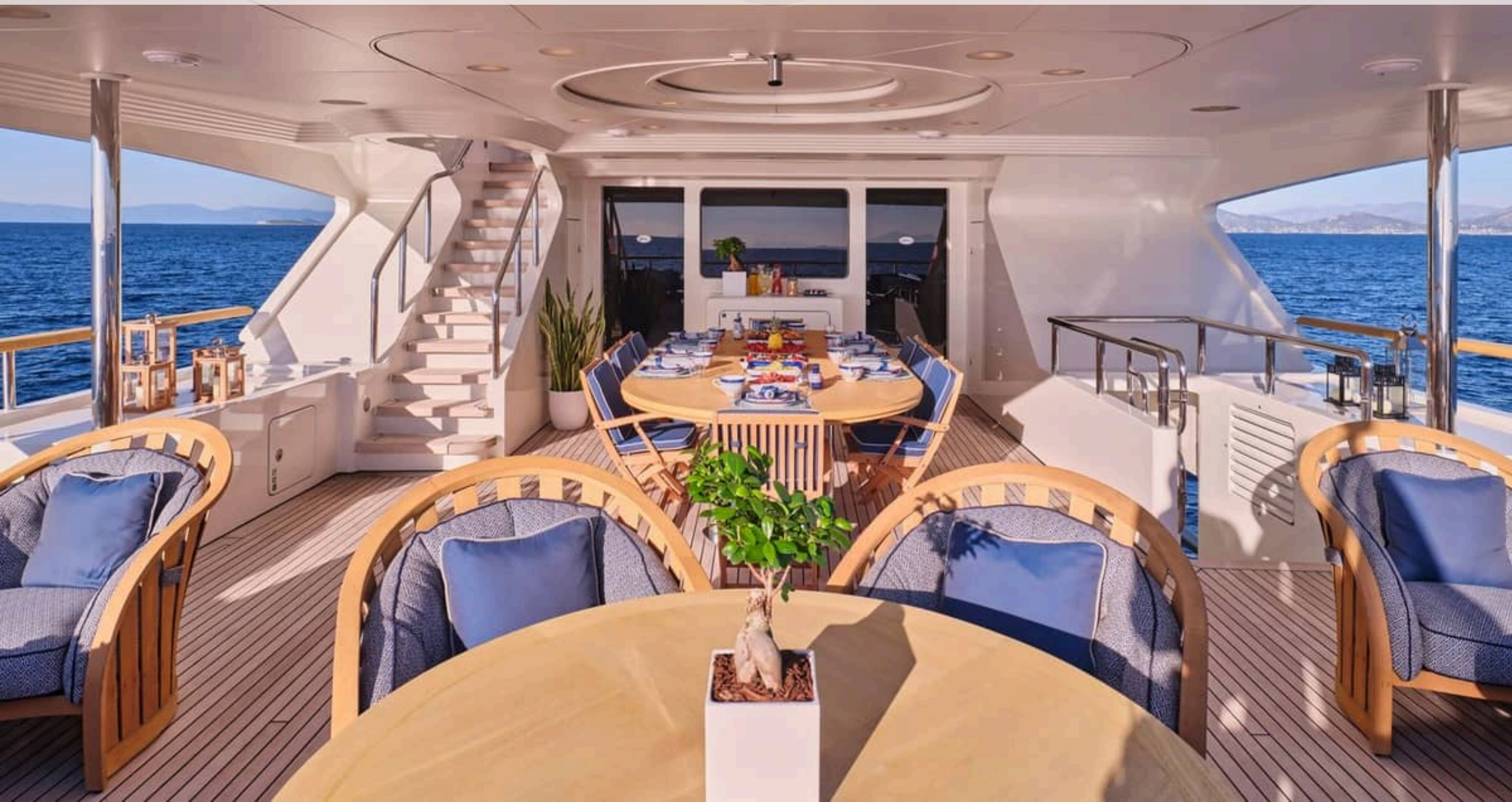






















































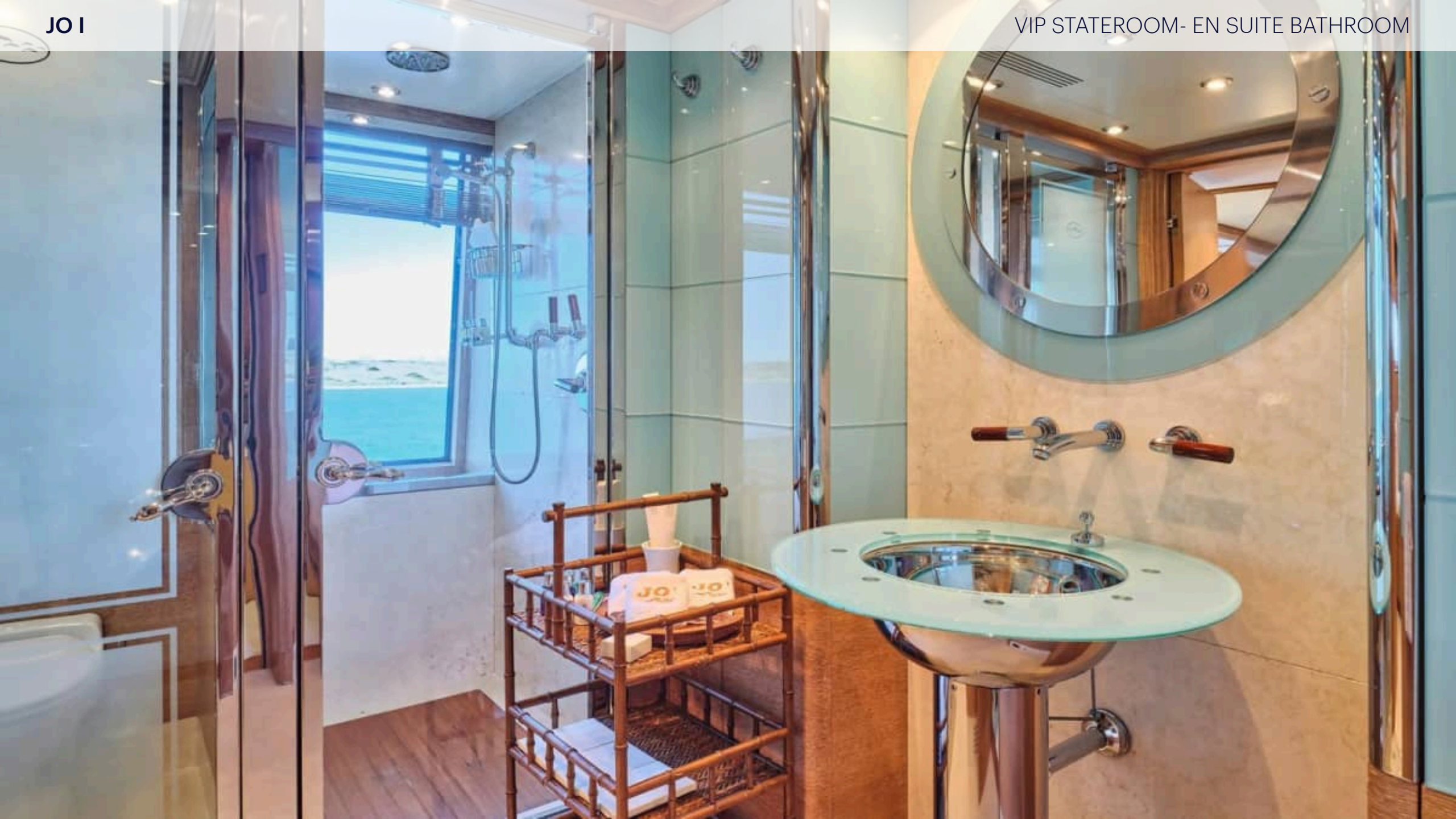










































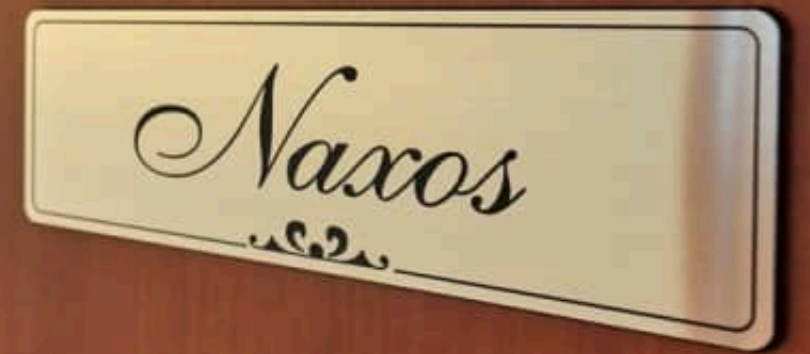
*Paros*













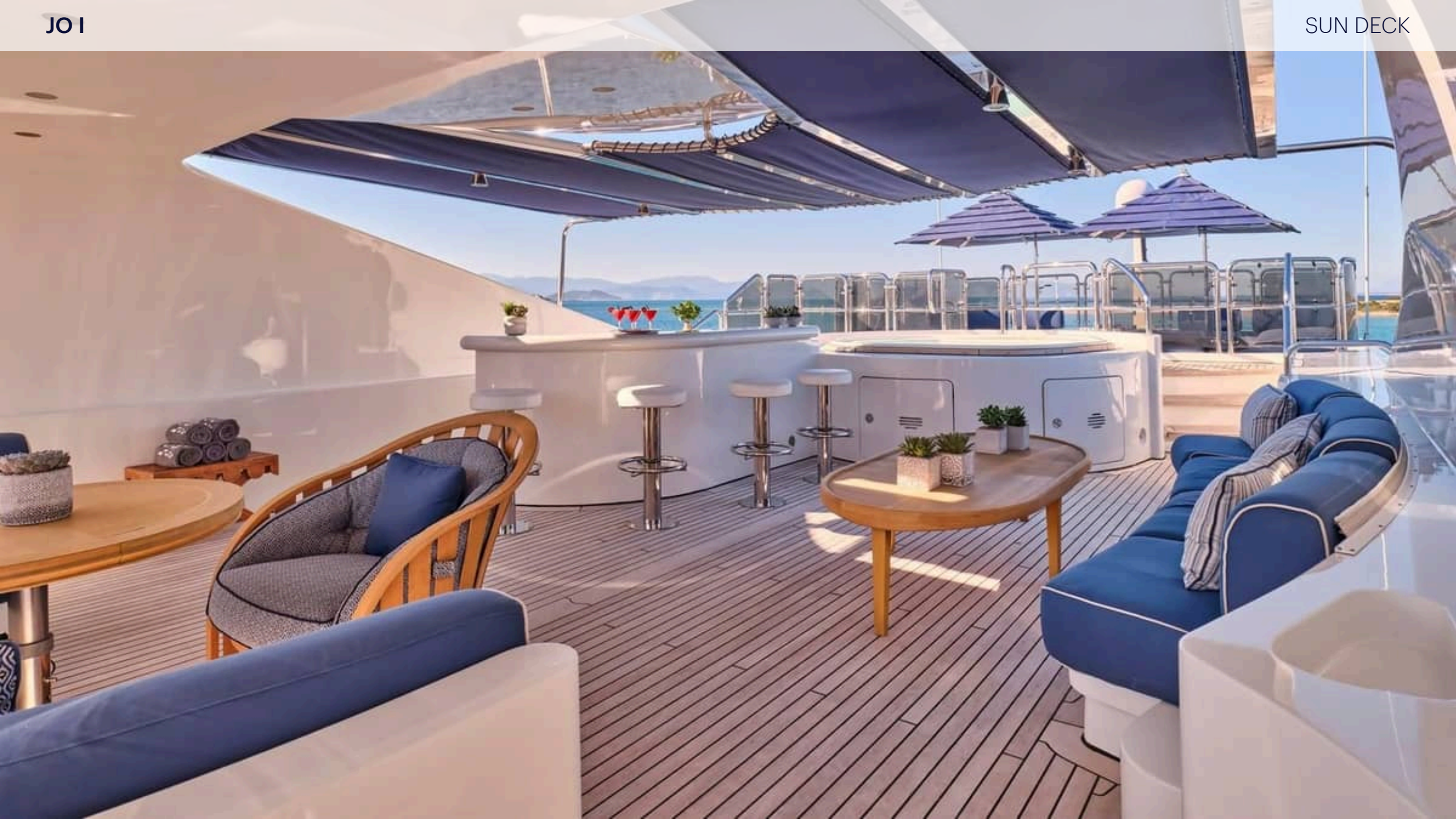


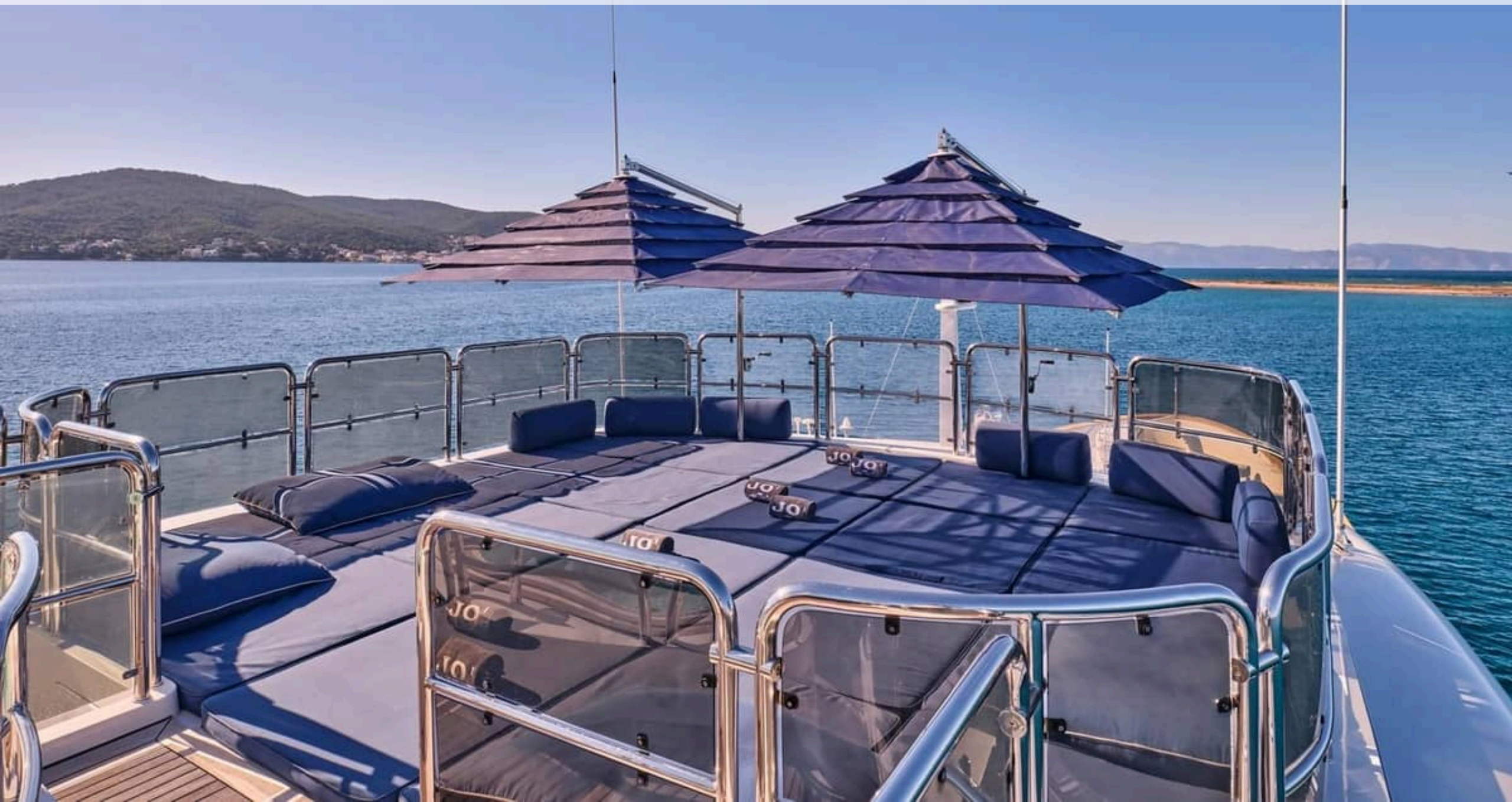


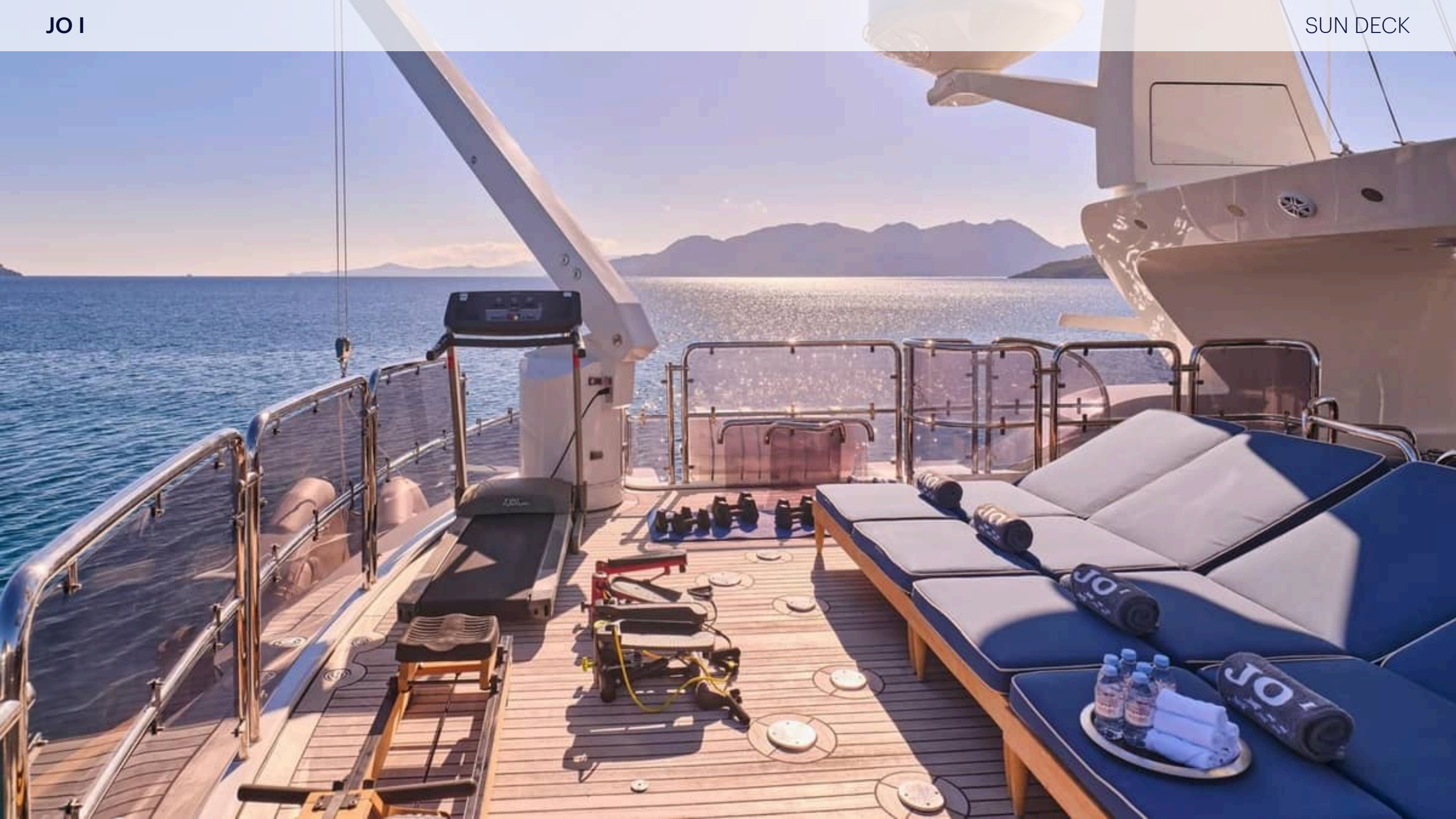


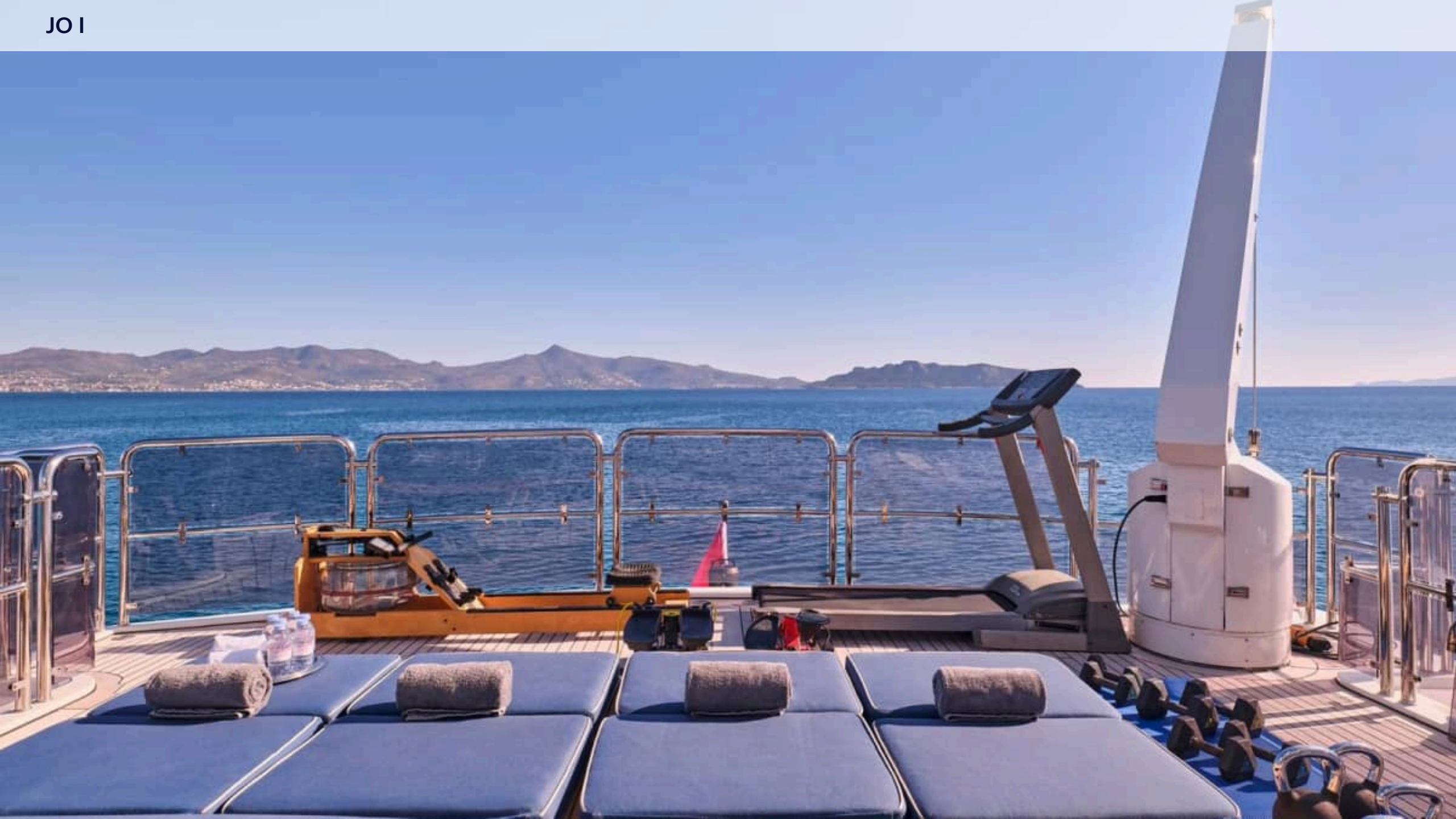






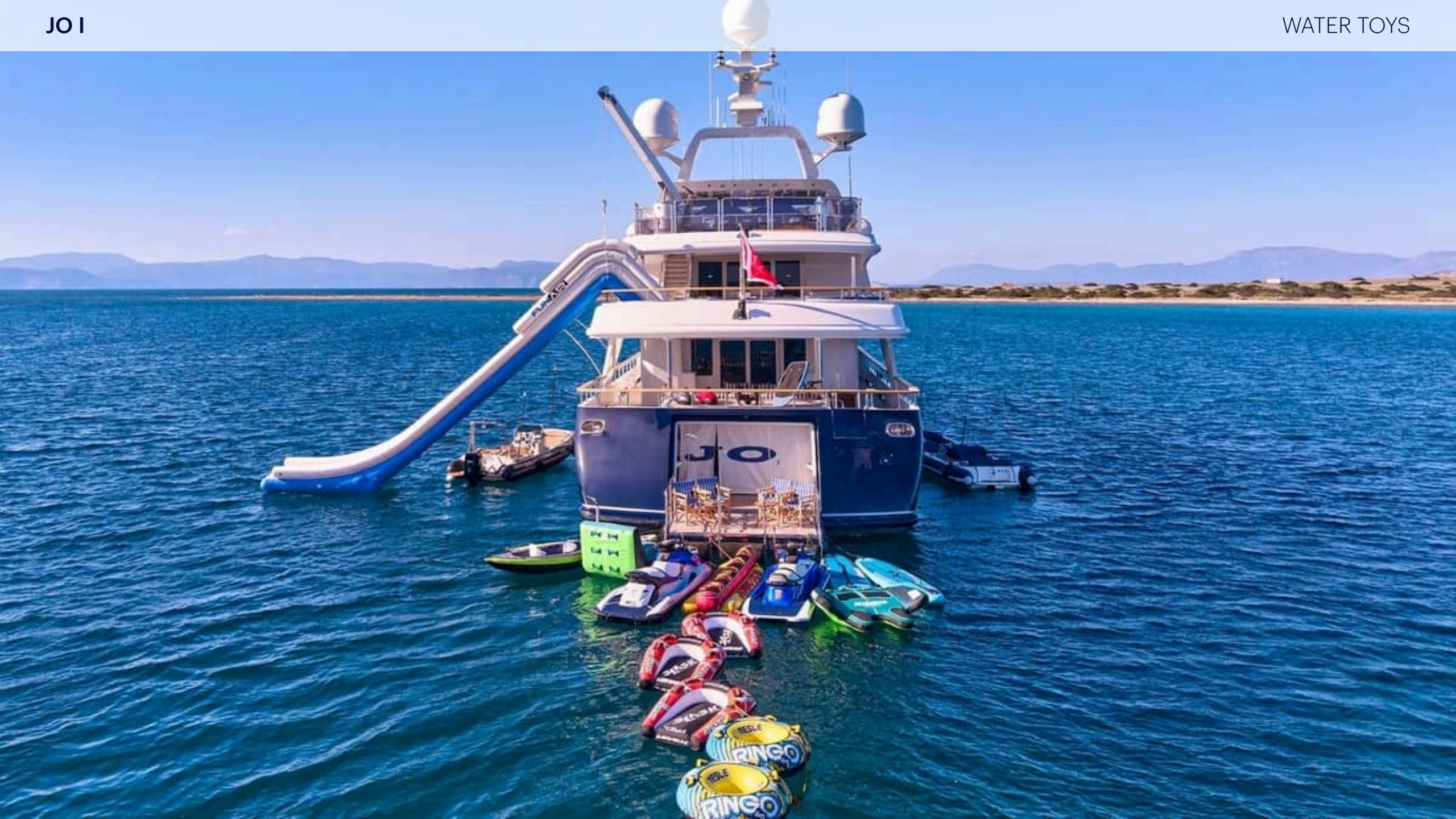




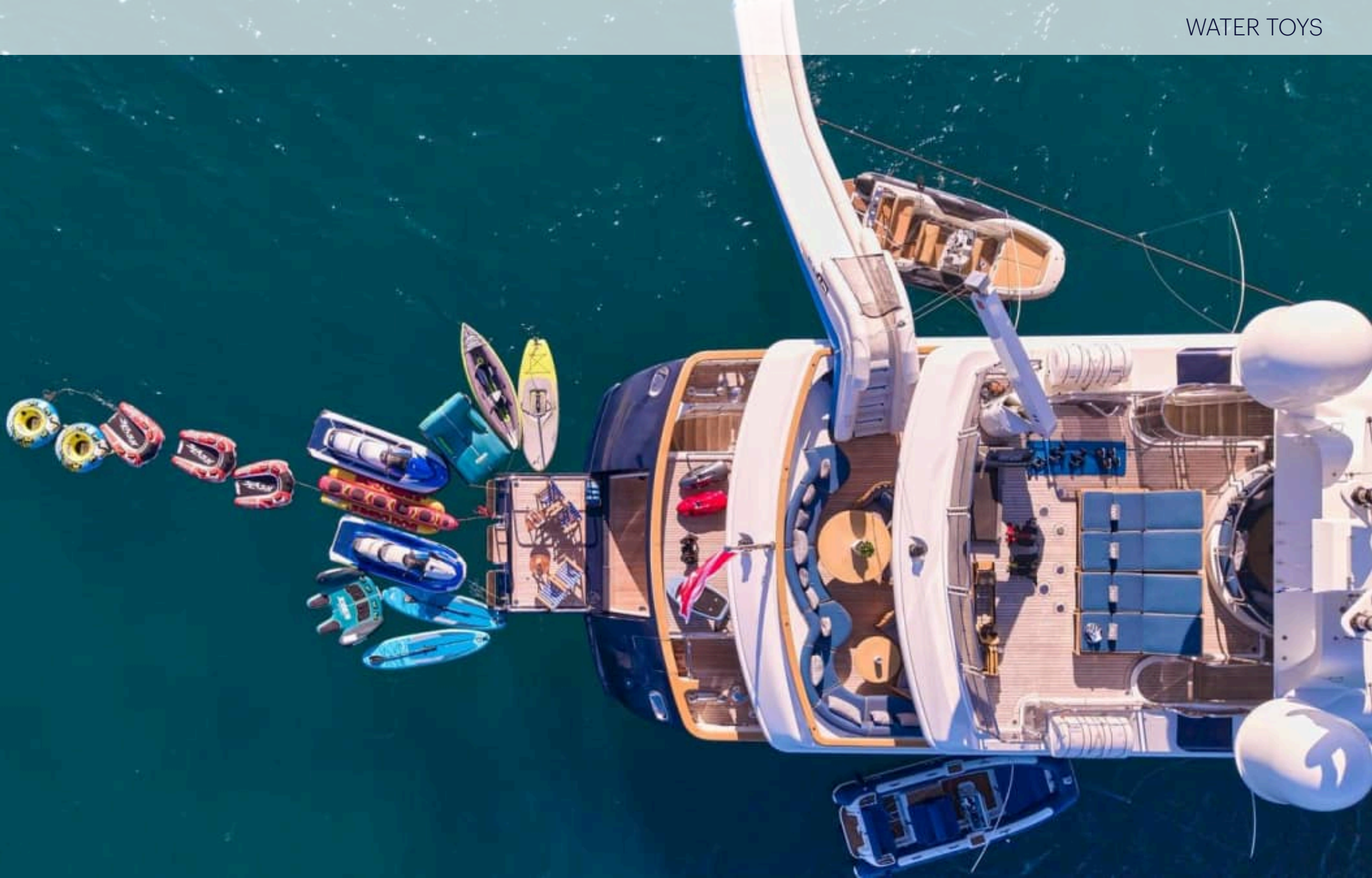






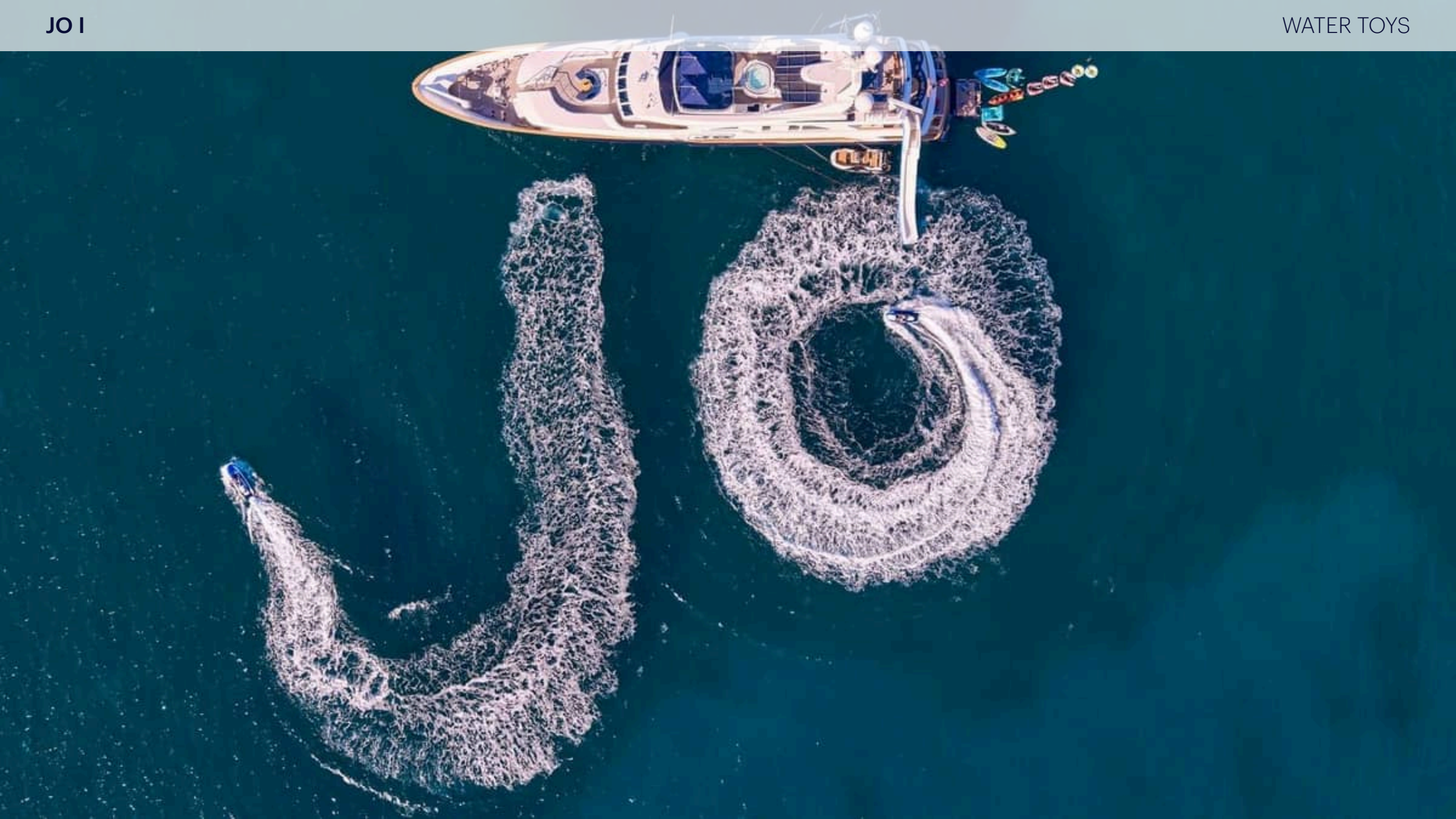












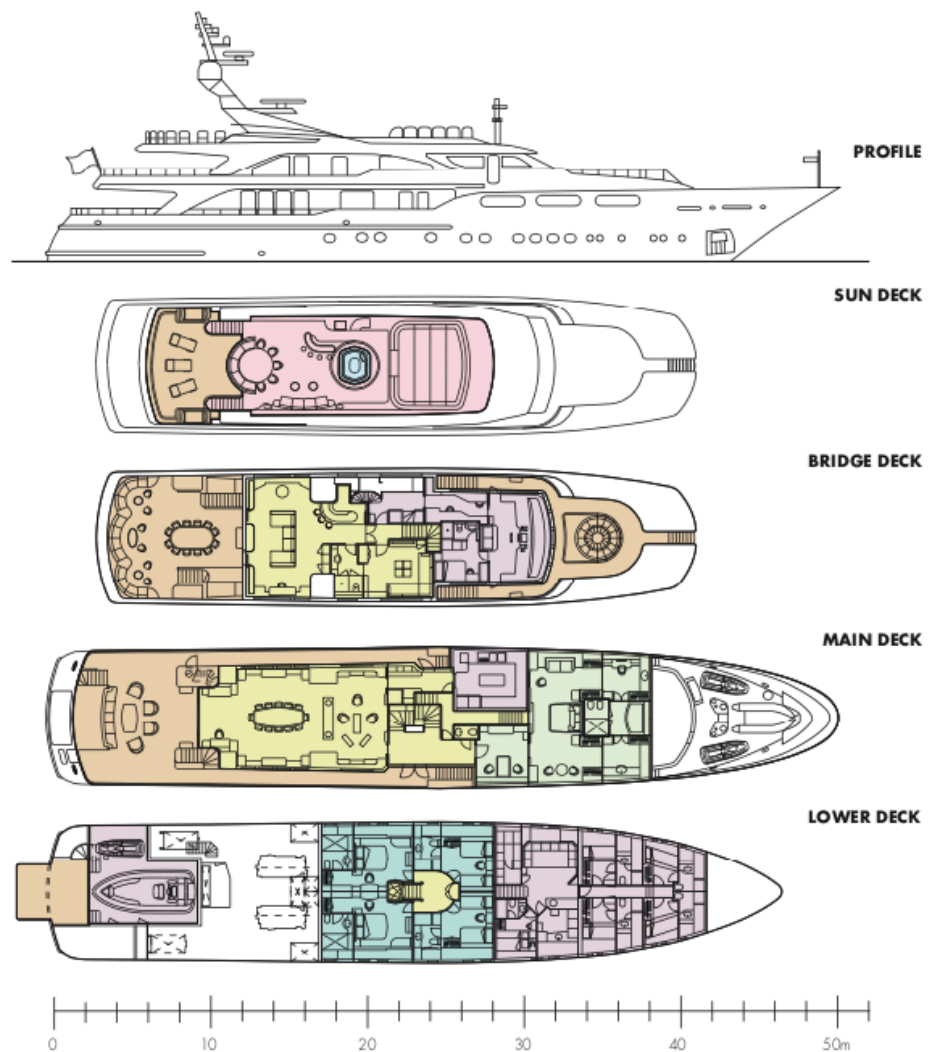






# JO

## GENERAL ARRANGEMENT



### KEY

- |             |              |
|-------------|--------------|
| DECK        | MASTER CABIN |
| GUEST AREAS | GUEST CABINS |
| CREW AREAS  | SUN DECK     |