



*Imagine*



*Imagine  
yourself on Board*

# Eye-catching Beauty



IMAGINE, launched in 2011, is one of the most advanced superyachts to be built by Amels – a world leader in superyacht design and construction. This yacht is a big 65 meter with exceptional grace and powerful design. Leading superyacht designers Tim Heywood and Andrew Winch have drawn the lines of IMAGINE to attract the eye from all angles. She incorporates the latest technology, making her one of the safest, quietest and most comfortable superyachts afloat. With her bold contemporary looks and exceptional accommodation and social spaces, life at sea has never been so good as when you're sailing on IMAGINE.





**From the Sky**  
down to the Sea





*Explore*



**New Horizons**

Style  
is always around You





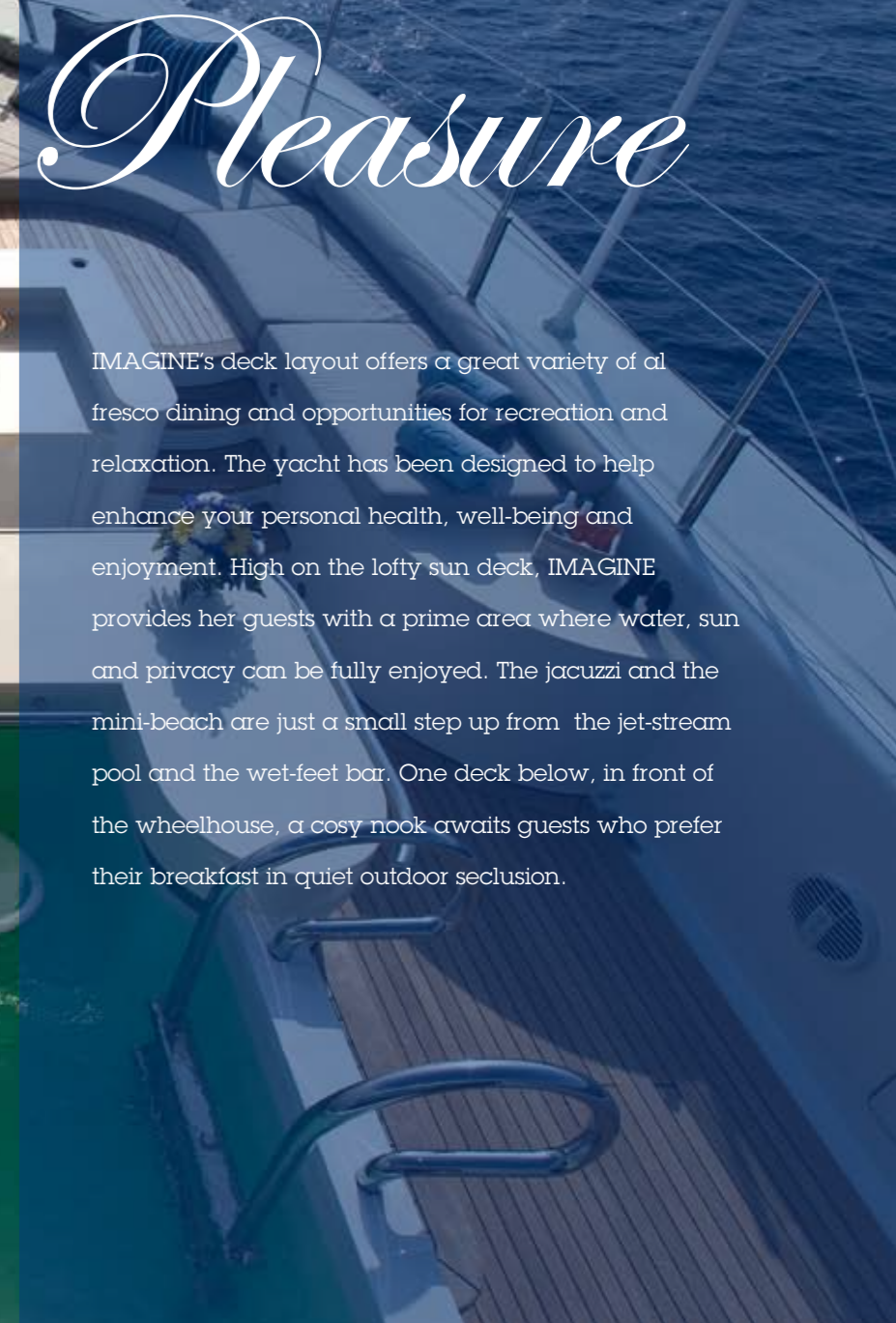


# Celebrating Life at Sea



Life on board IMAGINE gives you the ultimate freedom to enjoy every day as a once-in-a-lifetime experience. On board you can just be yourself. Breathtaking locations are waiting to be explored. A new, exciting world awaits you.





# *Pleasure*

IMAGINE's deck layout offers a great variety of alfresco dining and opportunities for recreation and relaxation. The yacht has been designed to help enhance your personal health, well-being and enjoyment. High on the lofty sun deck, IMAGINE provides her guests with a prime area where water, sun and privacy can be fully enjoyed. The jacuzzi and the mini-beach are just a small step up from the jet-stream pool and the wet-feet bar. One deck below, in front of the wheelhouse, a cosy nook awaits guests who prefer their breakfast in quiet outdoor seclusion.

*Enjoy the finest moments*



# Evening Life

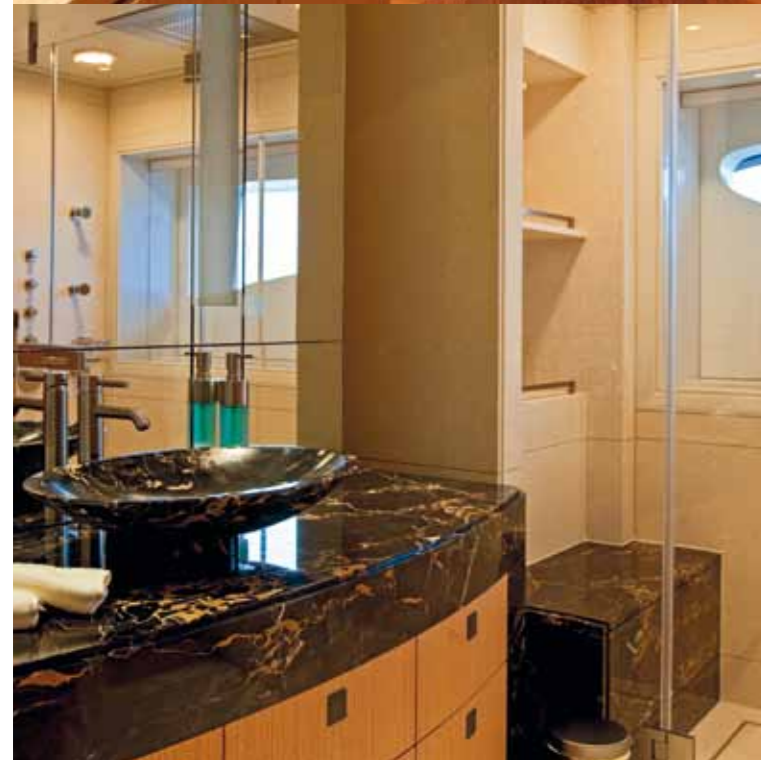


Enjoy some unforgettable sunsets over glittering seas, and then prepare yourself for some unforgettable magical on board IMAGINE. The subtle lighting of the interior can be altered according to the mood of the moment, whether you feel like chilling out under a starry sky, or if you're ready to party until sunrise.



Created by world-famous London designer Andrew Winch, IMAGINE's interior is a marvel of rare and exotic woods and stones. "We designed the interior to be easy on the eye, something you can enjoy. The crew are lovely people, they are expert at making their guests feel relaxed, and we designed the interior to recreate that same feeling of relaxation and comfort."





Owner's Suite

# Dining in absolute Style



IMAGINE's professional crew makes every day on board as memorable and enjoyable as the day you step aboard. Whether for a special dining occasion or a dynamic diving adventure... each crew member brings something extra to each charter. The yacht's highly experienced crew knows exactly how to make your stay on board unique, and the captain knows how to navigate to all the best cruising spots.



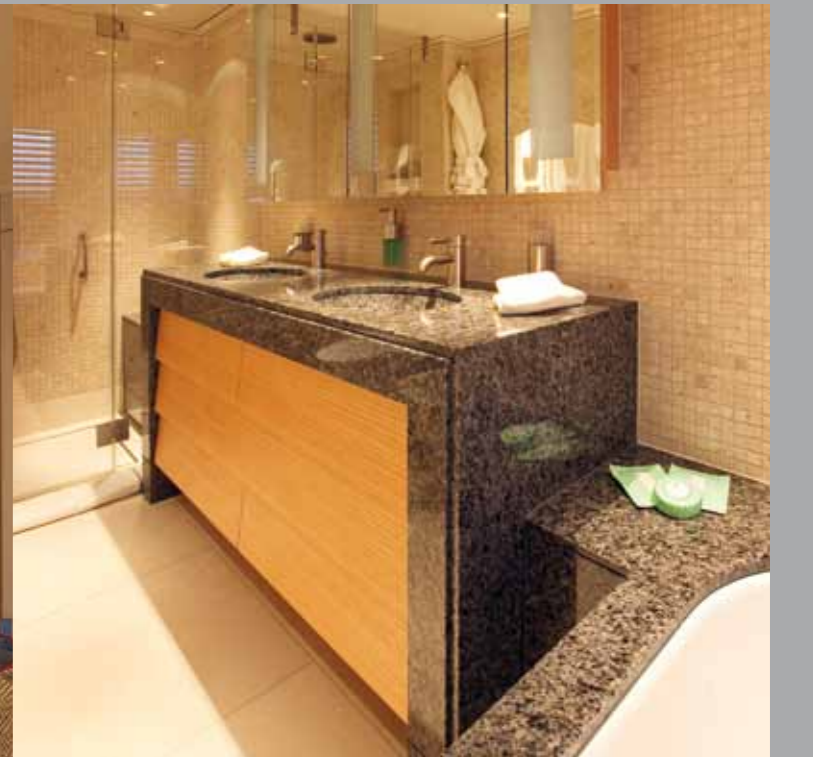




VIP Suite



Guest Suite





# the Art of Yachting



Wherever you look, the hallmarks of perfection are there. Tiny details, beautifully finished, reveal a yacht that has been designed and built from top to bottom with loving care and attention from master craftsmen. IMAGINE is one of the finest examples of high quality ship building, for which the Dutch are rightly renowned.



# *Living* your Life on Board





# Serious Fun

The outdoor beach club and the extended swim platform bring you right to the water's edge so you can dive in and enjoy the sea, thanks to the wide array of water craft and toys stored in IMAGINE'S large watersports garage. You'll never have so much fun tiring yourself out!



Length overall	65.50 meters (215 feet)
Length waterline	59.20 meters (194.2 feet)
Beam, midships	12.25 meters (40.19 feet)
Depth, midships	6.45 meters (21.20 feet)
Draft, full load	3.85 meters (12.60 feet)
Displacement	1,400 metric tons
Guests (incl. VIP cabin)	12
Crew	15 plus Captain
Tenders	Two 8.5 meters custom tenders / one Limo (air conditioned) / one open
Speed, max. at 100% MCR	17.0 knots
Speed, cruising	13.5 knots (economical)
Range @ 13.0 knots	5,000 nautical miles
Fuel capacity	155,000 liters
Fresh water capacity	38,000 liters
Gross Tonnage	1,503

#### Water sports

Two WaveRunners / one jet ski / two Seabobs / two kayaks / one water slide / snorkel gear / towables / skis / wakeboards etc.

#### Communications

VSAT internet / WIFI throughout vessel / one Sat tel / two VOIP lines.

#### Entertaining system

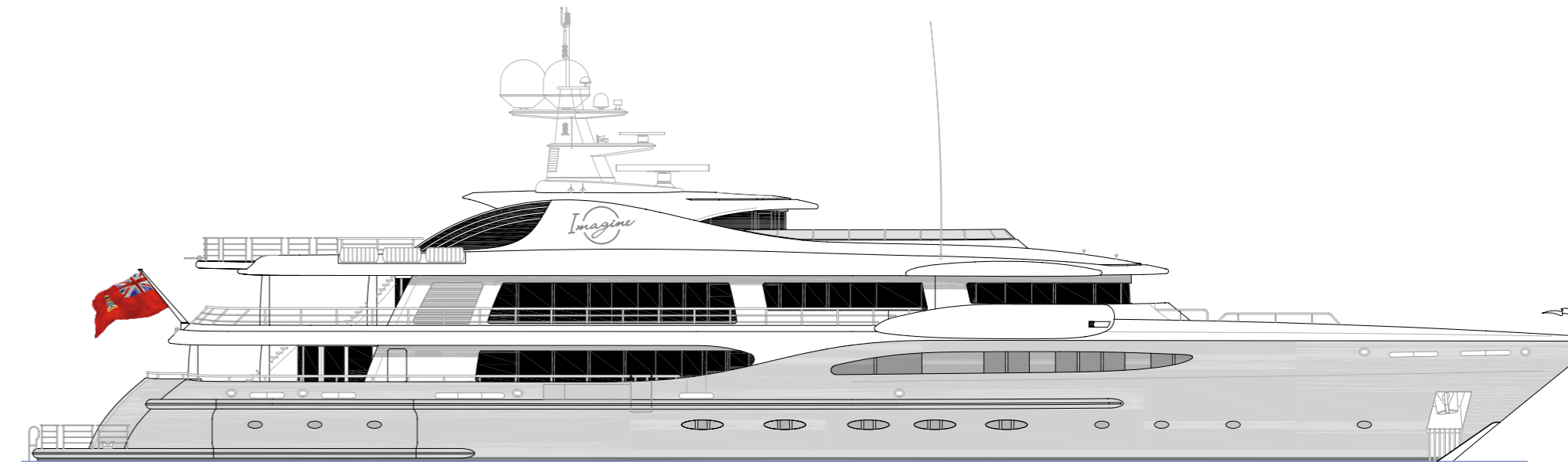
Satellite TV (European and Russian receivers) / Movie and music on demand / IPOD docking stations in all areas / Cinema / Projector screens in Sky Lounge and sun deck aft (exterior).

#### GYM equipment

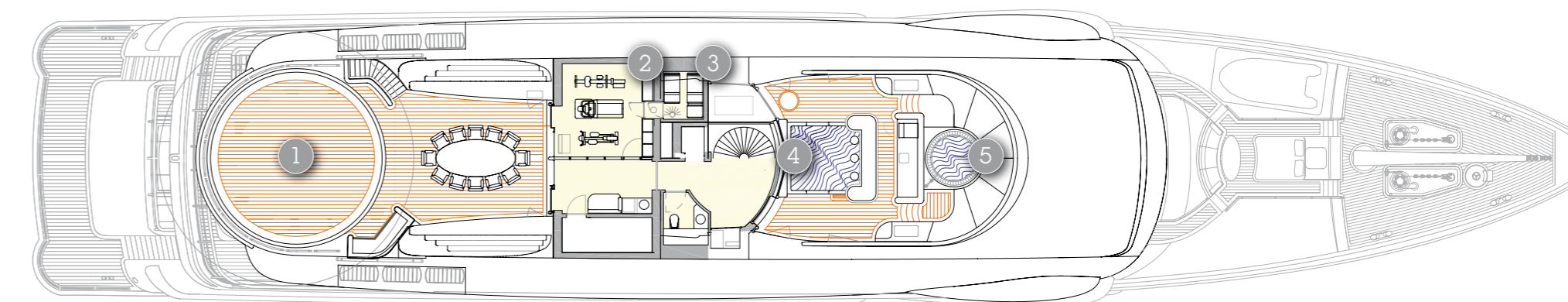
Running machine / Exercise bike and power plate / Free weights / Yoga mats.

Massage equipment onboard / Steam room

# Specifications



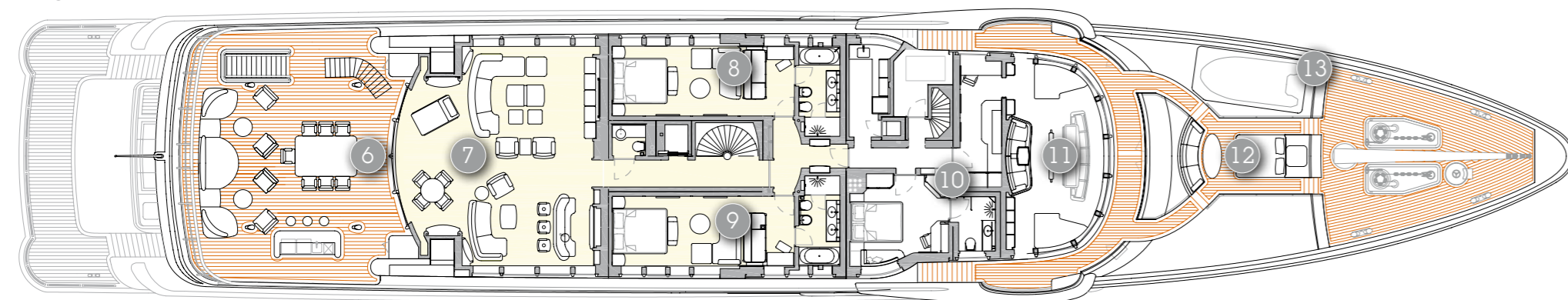
Sun Deck



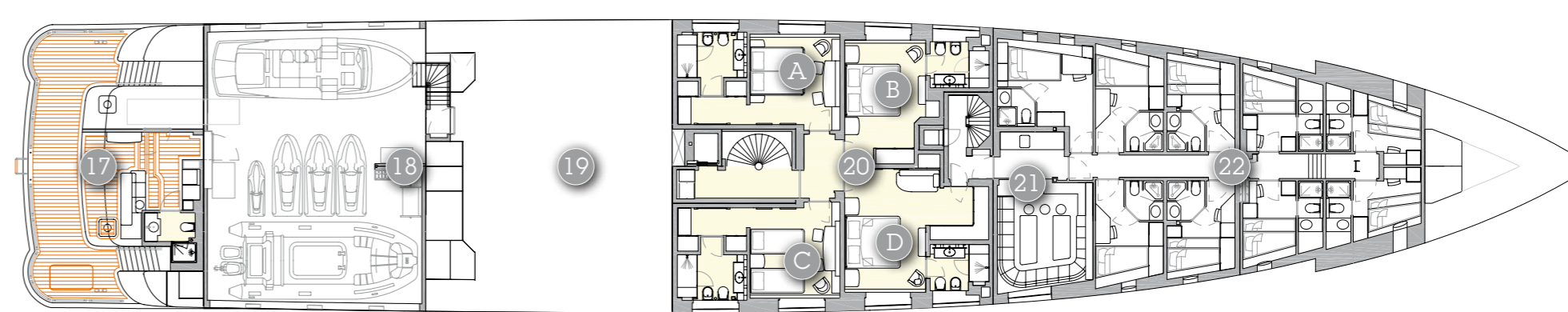
#### Deck Information

1 Sundeck Dining 2 Gym 3 Steam room 4 Swimming Pool 5 Jacuzzi & Sunbeds

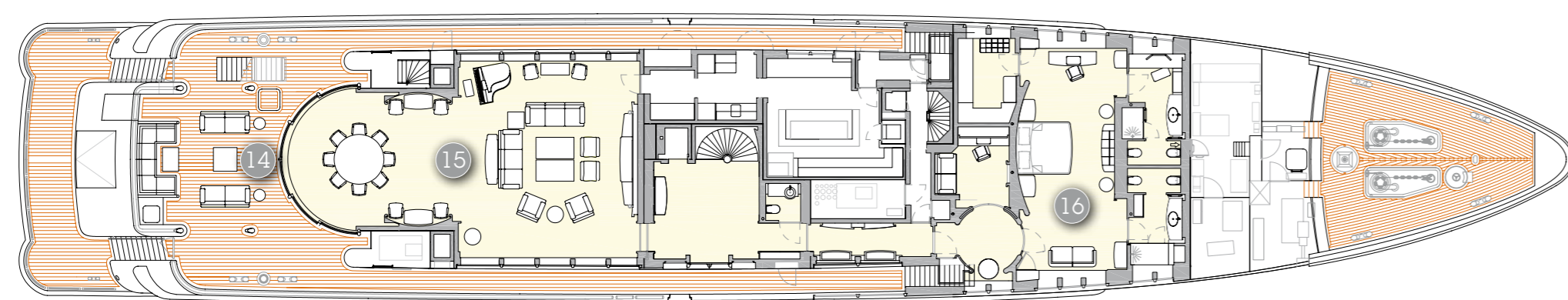
Bridge Deck



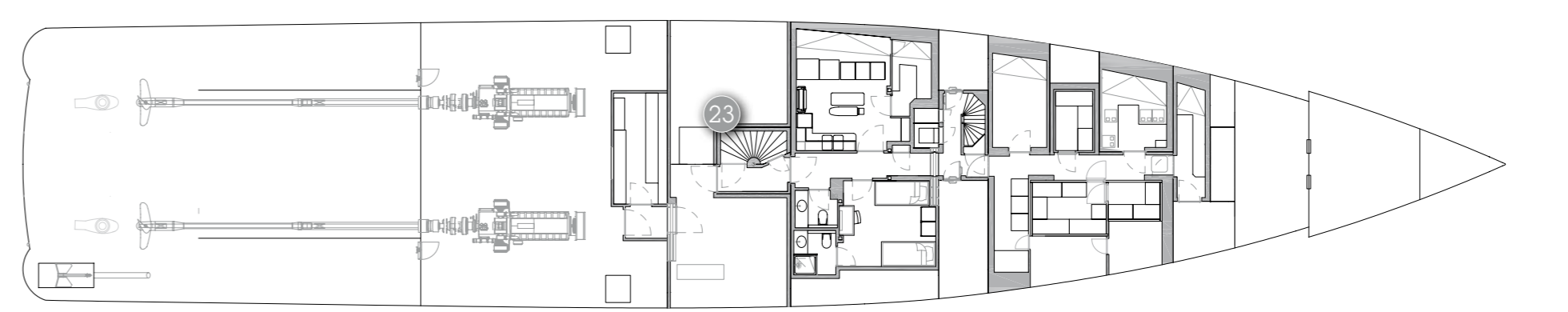
Lower Deck



Main Deck



Tank Deck



6 Bridgedeck Dining 7 Sky Lounge 8 VIP Suite & Bathroom 9 VIP Suite & Bathroom 10 Captain's Cabin 11 Wheelhouse

12 Sunbeds 13 MOB 14 Maindeck Aft 15 Maindeck Saloon 16 Owner's Suite, Office & Bathrooms

17 Beach Club 18 Watersport Store 19 Engine Room 20<sup>A-D</sup> Guest Suites 21 Crew Mess 22 Crew Cabins 23 Machinery Space



