

EMOCEAN

FOR CHARTER



EMOCEAN

Best Combination of Luxury & Comfort

Emocean is the first explorer yacht to be built by Rosetti Superyachts. She has enjoyed a successful period as a luxury charter yacht since her launch in 2021.

The 38m Emocean is a steel-hulled superyacht with an impressive 5,000nm range, consuming just 55 litres of fuel per hour at 9 knots. These remarkable credentials make her an ocean-going superyacht with enhanced eco-friendly factors.

Emocean has a modern exterior profile with sections of angular glass intersecting her lines. She was designed by Hydro Tec and offers a carefully considered layout with 350 square metres of deck space.





INTERIOR

Fresh & Contemporary

Emocean's large volume of 432 GT translates into a spacious interior that adopts a neutral colour palette with turquoise accents, resulting to a light and bright interior that can be easily personalised. Another example of details that went into Emocean's design and build - the saloon sofas have been custom built at different heights so as to avoid obstructing the windows and influx of natural light. Environmental impact was a consideration for her interior decoration as well, and many fabrics used for the upholstery have utilised recycled ocean plastic.

Along with the saloon lounge, other interior spaces and highlights include a formal dining area and 150-bottle crystal wine cellar, as well as a sky lounge with a bar and 75-inch cinema screen.





EMOCEAN | MAIN SALON



EMOCEAN | DINING



EMOCEAN | STAIRCASE



EMOCEAN | UPPER SALON



EMOCEAN | UPPER SALON



EMOCEAN | UPPER SALON

ACCOMMODATION

Bright & Spacious

Emocean has accommodation for 12 guests. There is a full-beam master suite on the main deck, complete with an owner's office, walk-in wardrobe, his-and-hers en suite bathroom and a private balcony accessed via floor-to-ceiling sliding doors. The guest accommodation is on the lower deck and comprises two guest doubles and two cabins which can be converted between twin or double configuration, each with an additional Pullman berth for complete flexibility.





EMOCEAN | MASTER SUITE



EMOCEAN | MASTER SUITE



EMOCEAN | DOUBLE CABIN



EMOCEAN | DOUBLE CABIN



EMOCEAN | DOUBLE CABIN



EMOCEAN | CONVERTIBLE CABIN



EMOCEAN | CONVERTIBLE CABIN



EMOCEAN | CONVERTIBLE CABIN

EXTERIOR

Modern & Sleek

The deck spaces are designed for entertaining and relaxation, with seating areas to aft on both the main deck and bridge deck. In here, one can also find a beautifully designed crane and storage for the main tender.

The sundeck is Emocean's crowning glory, featuring a 3.5m infinity pool along with a bar, cushioned sunpads and al fresco dining area. The sundeck space can be enclosed by glass panels, creating a winter garden that can be cooled or heated as desired and giving flexibility of use in all climates.

Her beach club fosters connectivity with the sea in complete comfort, thanks to a well-appointed dayhead, whilst also offering plenty of storage for water toys.





EMOCEAN | PORTUGUESE BRIDGE

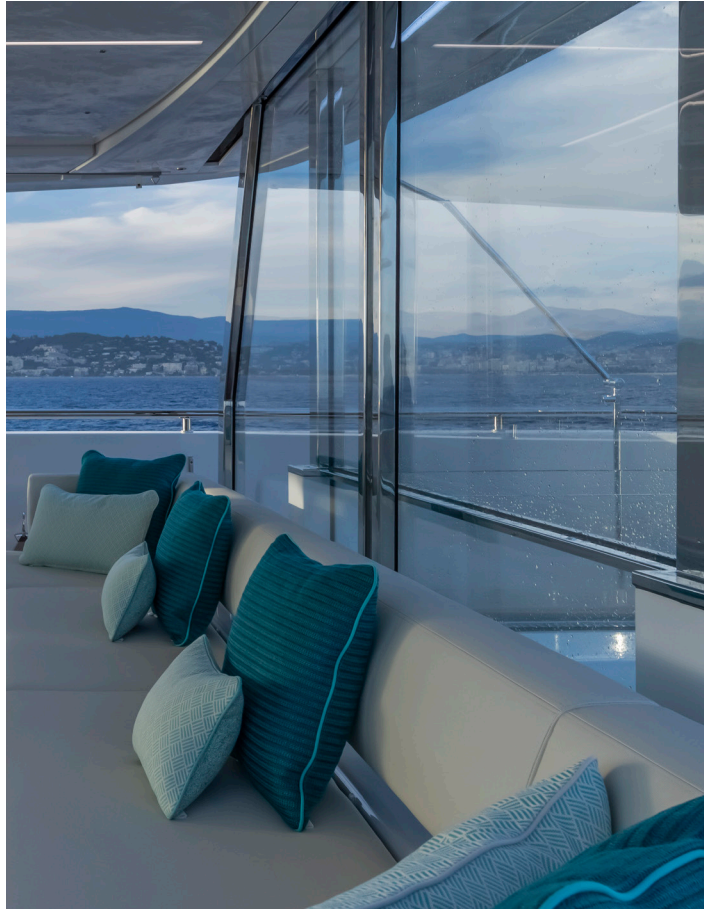


EMOCEAN | MAIN AFT DECK





EMOCEAN | UPPER AFT DECK



EMOCEAN | SUNDECK



EMOCEAN | SUNDECK

TENDERS & TOYS

What's On Board

- 6.5m ZAR 65 Suite RIB tender with 175hp suzuki outboard diesel engine (12 pax)
- 2 x Sea-Doo GTX 300 Limited jet skis (2 man)
- Seabob F5SR
- Seabob F5S
- 2 x Kayaks (2 man)
- Inflatable Stand-up Paddle Board
- Wakeboard
- Waterski
- 10 x Snorkeling Sets (Adults and Juniors)
- Jellyfish Pool
- Big Sport Fishing Rod
- Various inflatable towed toys (1 x Sofa)

Emoceen is a certified RYA training center for guests' use of watersports equipment

Hydraulic platform for easy access to the sea

Diving Board from Bridge Deck







SPECIFICATION

BUILD

Rosetti SuperYachts

YEAR

2021

LENGTH

38.20m (125' 4")

BEAM

8.90m (29' 2")

DRAFT

2.40m (7' 10")

GUESTS

12

CABINS

5

CREW

8

GROSS TONNAGE

432

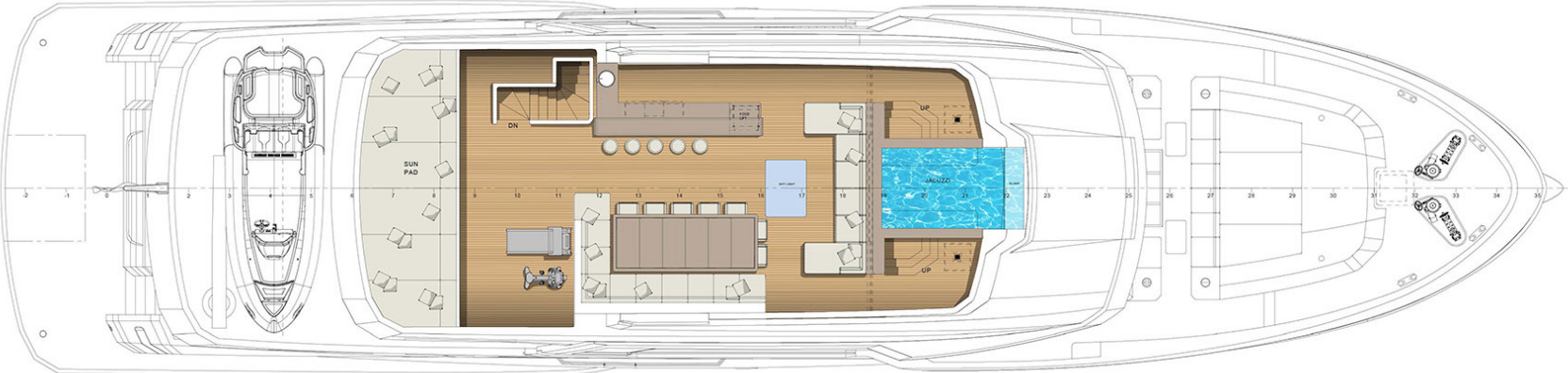
CRUISING SPEED

11 Knots

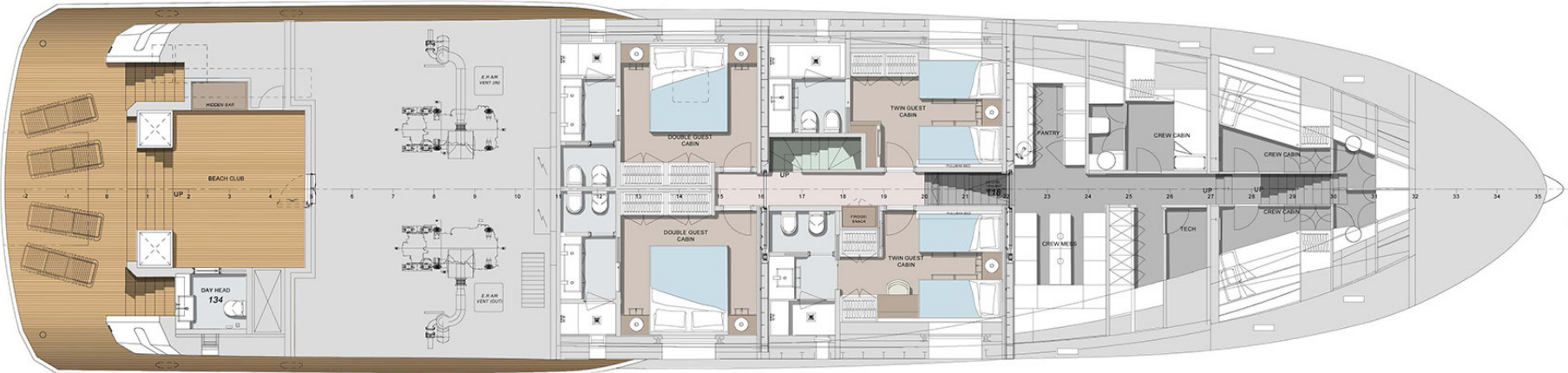


EMOCEAN

GENERAL ARRANGEMENT



GENERAL ARRANGEMENT



EMOCEAN

FOR CHARTER

