



CYNDERELLA

116' 1" (35.36M) | HARGRAVE | 2022

BASIC SPECIFICATIONS

BUILDER	FUEL TYPE	GROSS TONNAGE	CRUISING/MAX SPEED	ACCOMMODATION
Hargrave	Diesel	317 GT	12 knots / 18 knots	10 guests in 5 cabins
INTERIOR DESIGN	EXTERIOR DESIGN	LENGTH	BEAM	HULL MATERIAL
Yacht Interiors By Shelley	Hargrave Custom Yachts	116' 1" (35.36m)	25' 7" (7.79m)	GRP
CREW	FLAG	BUILT/REFIT	DRAFT (F/M)	ENGINES
7	Marshall Islands	2022 / 0	6' 7" (2m)	2 x Caterpillar 1900 hp

KEY FEATURES

- › 317 GT VOLUME TRANSLATES INTO REMARKABLE INTERIOR SPACE.
- › 5 KING-SIZED STATEROOMS, PERFECT FOR COUPLES.
- › HIGHLY PROFESSIONAL CREW OF 7 RECOGNIZED FOR THEIR SERVICE AND SUCCESSFUL CHARTER PROGRAM.
- › ON-DECK FULL-BEAM MASTER STATEROOM WITH WALK-AROUND KING BED AND A SENSE OF PRIVACY TYPICALLY RESERVED FOR MUCH LARGER YACHTS.
- › WATERFALL-STYLE INFINITY JACUZZI, PERFECTLY POSITIONED FOR PANORAMIC VIEWS ON SUNDECK.
- › VOLUME OF A 130' YACHT PLUS.

WATER TOYS

- › 32' GRADY WHITE FREEDOM TOW BEHIND TENDER W/TWIN 300HP YAMAHAS
- › TWO (2) LIFT EFOIL POWERED SURF BOARDS
- › TWO (2) LOTUS SIT ON KAYAKS
- › WATER SKIS, WAKEBOARD, INFLATABLE TOW BEHIND TUBE
- › MULTIPLE INFLATABLE PLATFORMS, LOUNGES & TOYS
- › PROFESSIONAL TOURNAMENT LEVEL FISHING EQUIPMENT
- › 14' WALKER BAY INFLATABLE RIGID BOTTOM DINGHY W/70HP YAMAHA
- › TWO (2) HOBIE ECLIPSE PEDDLE STAND UP PADDLE BOARDS
- › TWO (2) NAUTICA POWERED SEA SCOOTERS
- › HUGE INFLATABLE SLIDE
- › SNORKEL GEAR

CYNDERELLA

ARIEL PORT











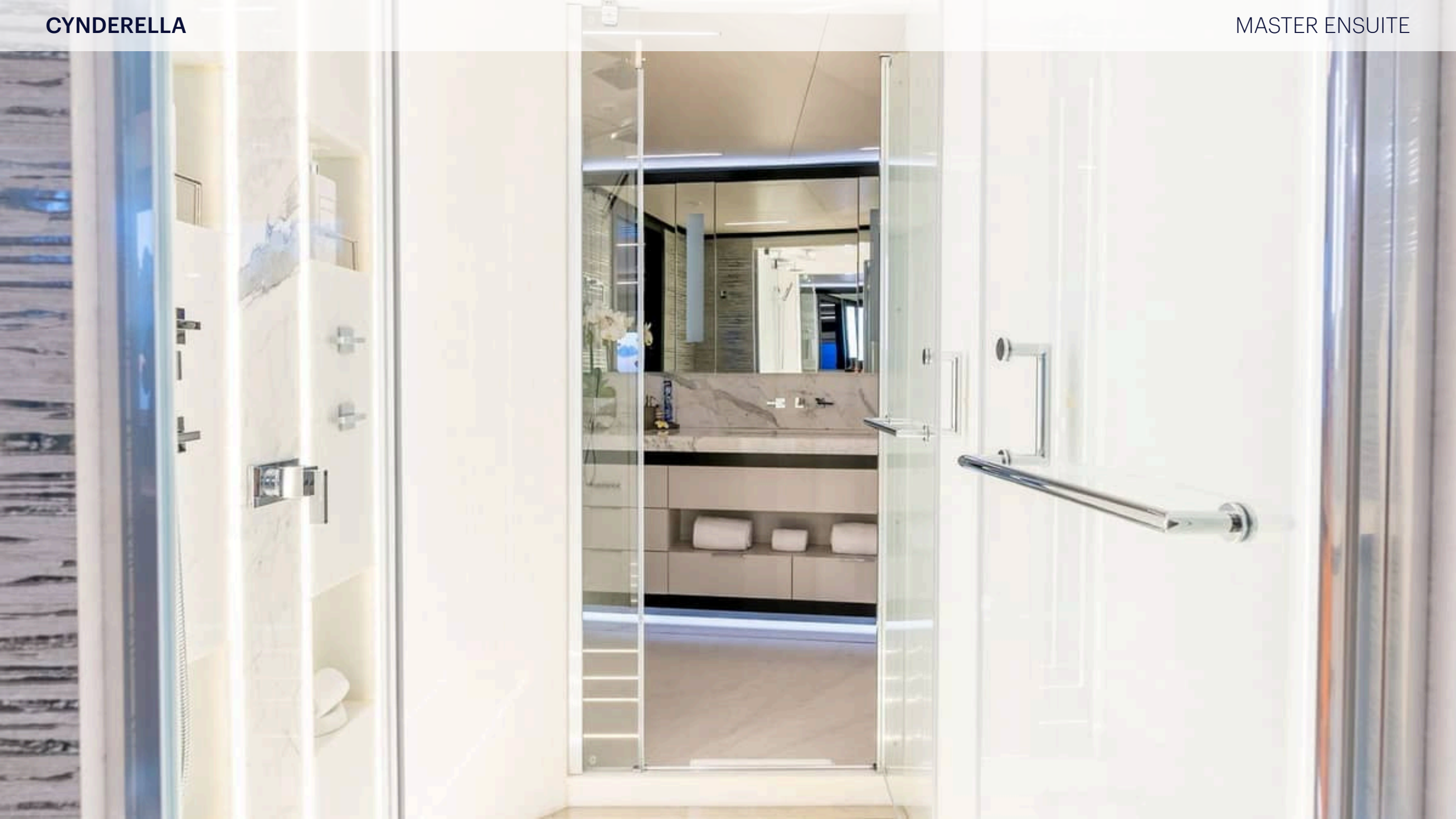


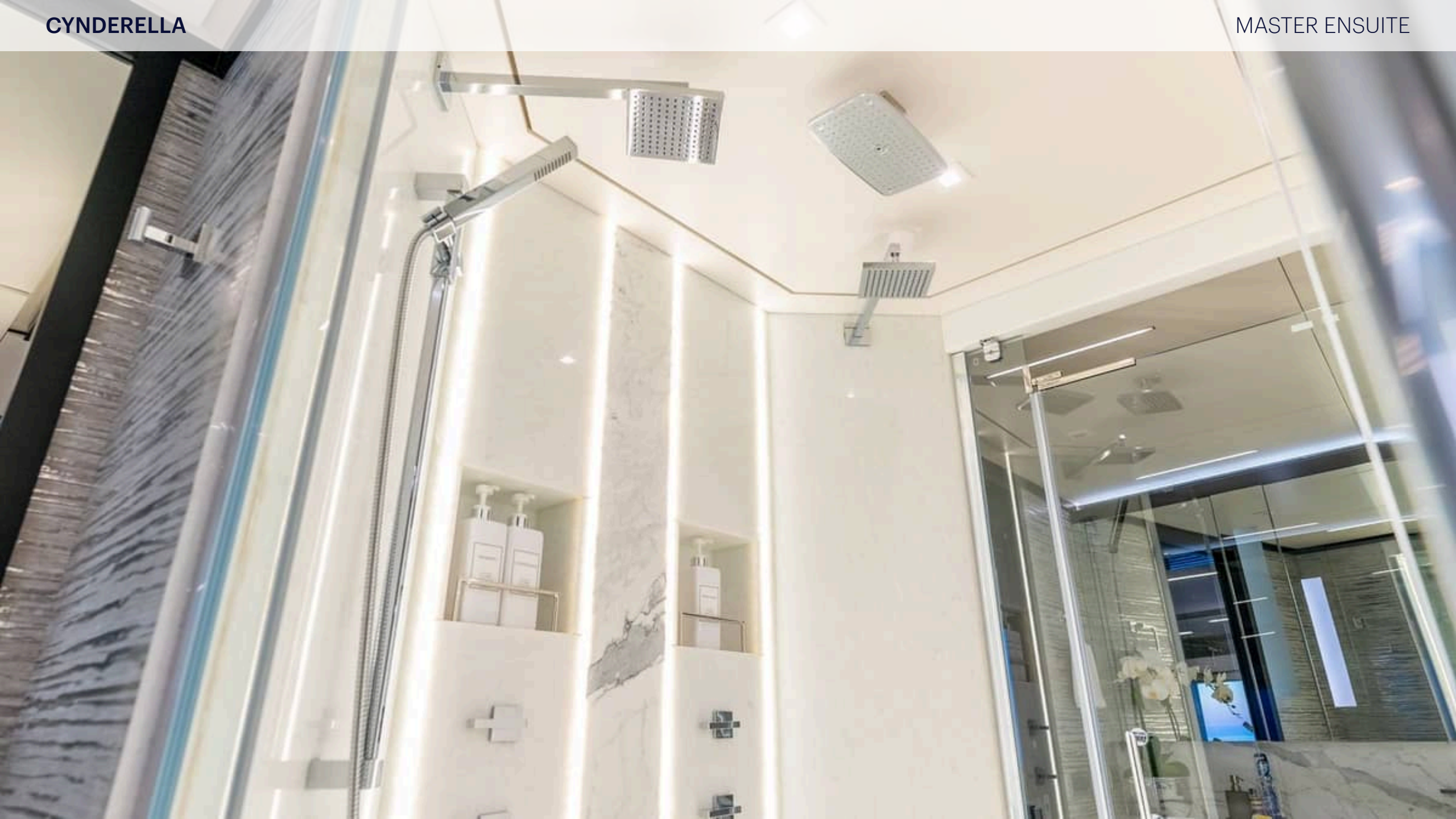


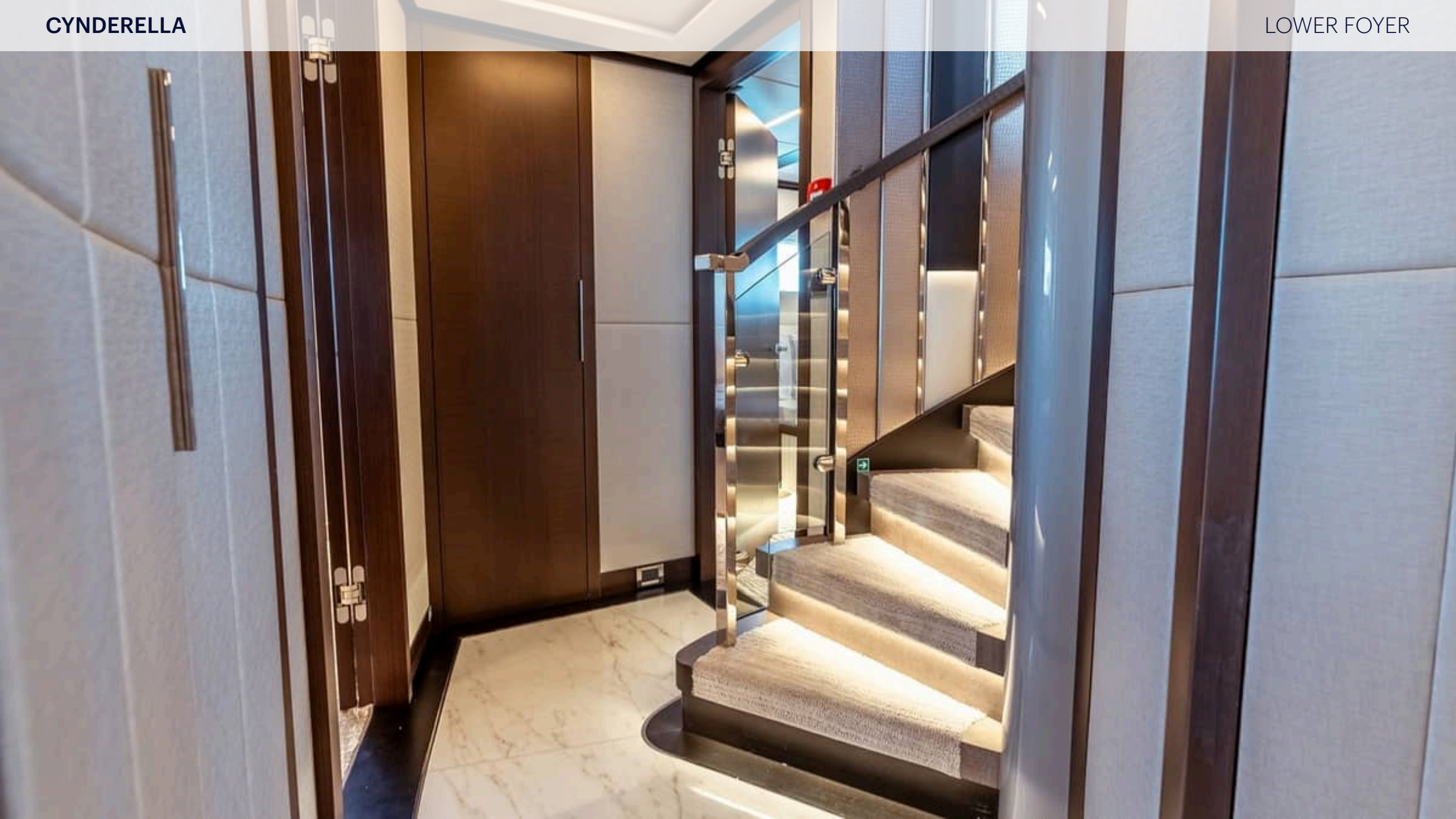


































CYNDERELLA

AFT SEATING AREA SUNDECK



CYNDERELLA

AFT SEATING AREA SUNDECK



CYNDERELLA

SUNDECK JACUZZI



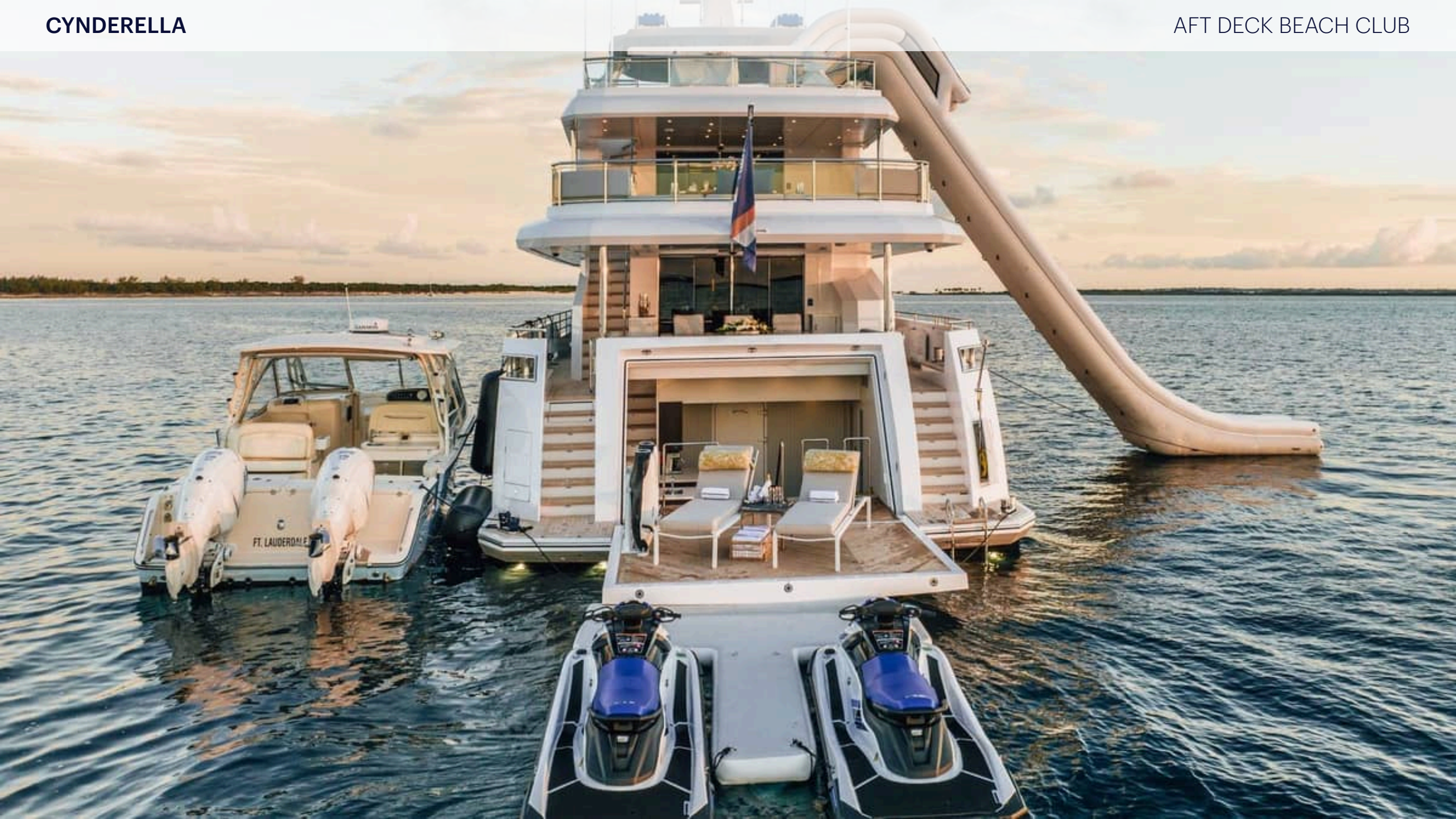


CYNDERELLA

SUNDECK JACUZZI







CYNDERELLA

BOW SEATING AREA



CYNDERELLA

BOW SEATING AREA



CYNDERELLA





