



36M/118FT CALYPSO I CHARTER BROCHURE

36M/118FT CALYPSO I



WELCOME ABOARD

CALYPSO I is an award-winning 36m/118' luxury charter yacht that has been receiving exceptional reviews for her Mediterranean charters since her launch in 2019. She boasts a bespoke modern exterior with a sleek aluminum construction and a continuous window line. The yacht's design includes the patented Fast Displacement Hull Form (FDHF) from Van Oossanen, ensuring a comfortable cruising experience and fuel economy at all speeds. CALYPSO I continues to impress guests with her outstanding performance and luxurious amenities.

36M/118FT CALYPSO I

THE EXPERIENCE

Built by the Mulder shipyard, the yacht accommodates 10 charter guests with a flexible cabin layout to cater for all group dynamics. The interior offers a relaxed beach style decor, using natural light, space and simple lines to create a calm and luxurious experience.



36M/118FT CALYPSO I



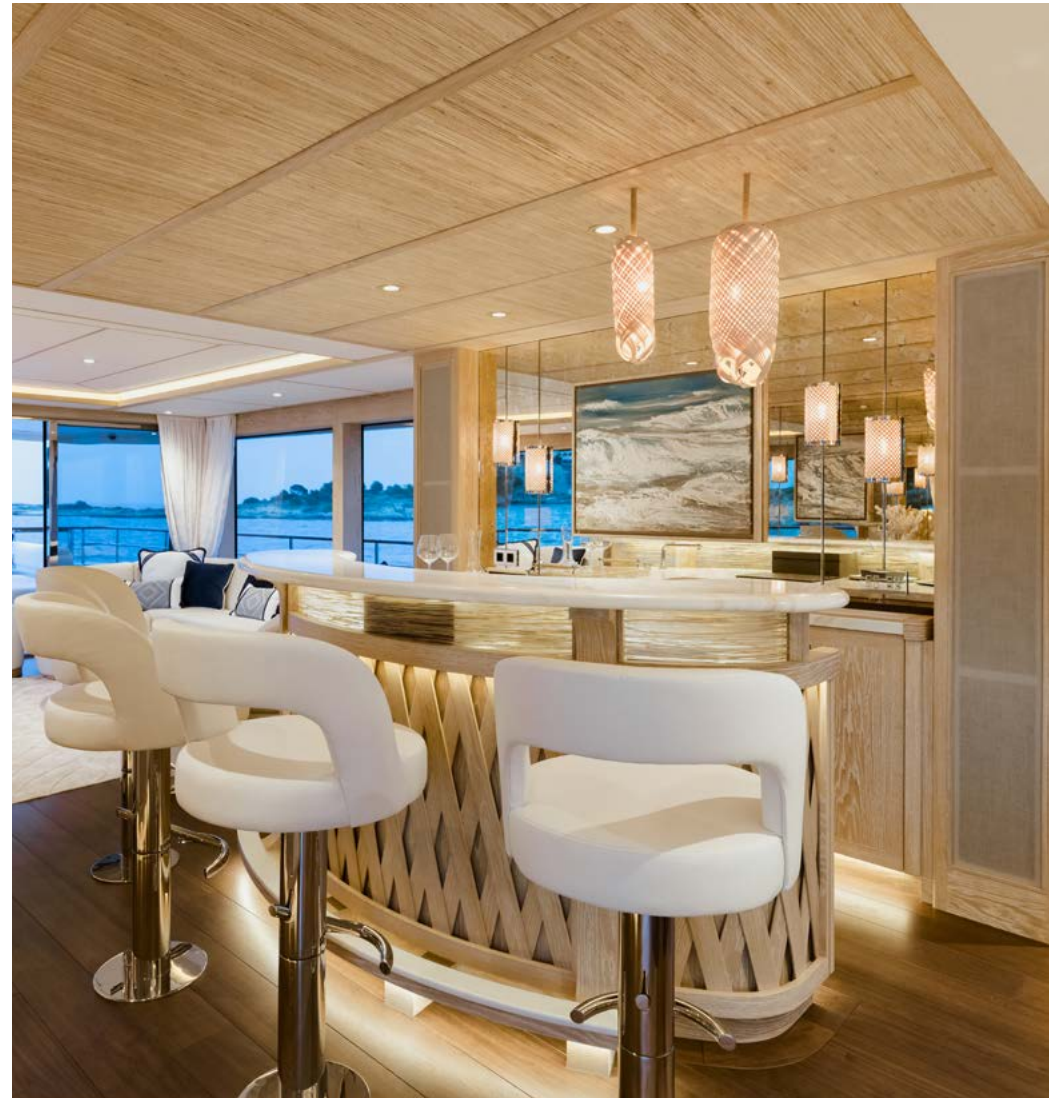
MAIN DECK

On the main deck, guests can enjoy comfortable alfresco dining on the aft deck, which seamlessly extends from the interior saloon. This allows guests to dine in style while taking in the beautiful views of their surroundings.

36M/118FT CALYPSO I

SALOON AND BAR

CALYPSO I's saloon and bar feature stunning Italian design, creating an elegant and inviting interior for guests to enjoy.



36M/118FT CALYPSO I



DINING AREA

Calypso I's dining area offers a light and airy atmosphere, creating a delightful experience for guests. The dining area provides comfortable seating and can accommodate large groups, making it the perfect space for formal dinners or casual meals with family and friends.

36M/118FT CALYPSO I

ACCOMMODATION

Calypso I offers four spacious cabins on board, including two double cabins and two convertible cabins, accommodating up to ten guests. The flexible cabin layout caters to all group dynamics, making it ideal for families or groups of friends.



36M/118FT CALYPSO I

MASTER CABIN

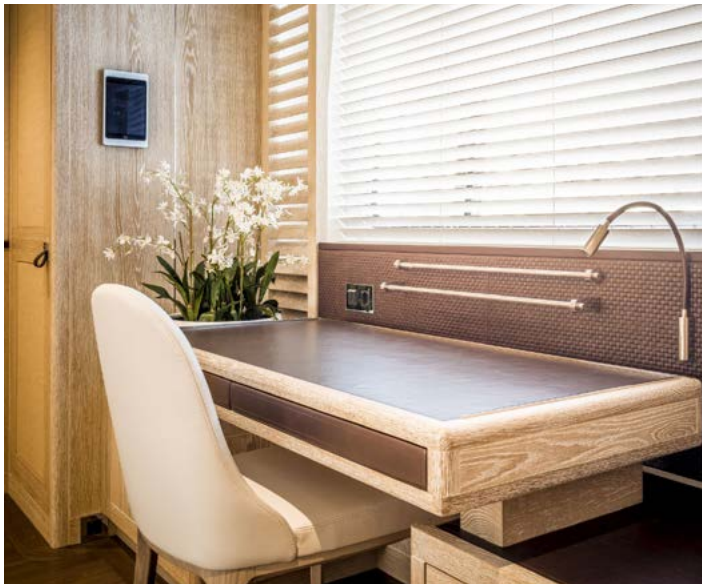


36M/118FT CALYPSO I



36M/118FT CALYPSO I

VIP CABIN



36M/118FT CALYPSO I



CONVERTIBLE/ TWIN CABIN

36M/118FT CALYPSO I



CONVERTIBLE / DOUBLE CABIN

36M/118FT CALYPSO I

SUNDECK

CALYPSO I's sun deck is the ultimate relaxation space, featuring ample room for lounging and soaking up the sun. The deck is equipped with comfortable sun pads, a Jacuzzi, and a bar, making it the perfect place to unwind with a refreshing drink in hand.



36M/118FT CALYPSO I

DECK JACUZZI



36M/118FT CALYPSO I

THE WHEELHOUSE



36M/118FT CALYPSO I



BEACH CLUB

CALYPSO I offers an extensive selection of water toys and equipment, ensuring that guests can enjoy a range of thrilling water activities during their charter. From jet skis and sea bobs to a jellyfish pool, there is something for everyone to enjoy. The highly trained crew members will ensure the safety and enjoyment of all guests while they participate in the water activities.

36M/118FT CALYPSO I

MAIN CHARACTERISTICS	
Motor Yacht	Motor Yacht
BUILDER	MULDER
NAVAL ARCHITECT	Van Oossanen Naval Architects
EXTERIOR DESIGN	Claydon Reeves Design Studio
INTERIOR DESIGN	Vickers Studio
YEAR	2019
CLASSIFICATION	Built to ABS class
HULL CONSTRUCTION	Aluminium hull and superstructure
HULL CONFIGURATION	Semi displacement
FLAG	Maltese
DISPLACEMENT TONS	207 TON @ half load
DIMENSIONS	
LOA	36.00m (118' 1")
BEAM	8.00m (26' 3")
DRAFT	2.05m (6' 9")
SPEED AND RANGE	
CRUISING SPEED	10 knots
MAX SPEED	15 knots
FUEL CONSUMPTION	10 knots is 73l/hr 15 knots 280l/hr
GROSS TONS	296
RANGE	Trans Atlantic
TENDERS & WATERTOYS	
Williams Diesel Jet Tender 2024, Model 6BY3-260	
1x Yamaha Jet Ski SVHO Waverunner	
4x Subblue Vapor underwater scooters	
4x Subblue Navbow +	
2x Glass bottomed kayaks	
4x SUP Boards	
1x Fliteboard	
2x Flyte scooters which convert into e-foils	
Fishing gear	
SeaRaft Jellyfish Swimming platform with 4m x 5m netted swimming pool	

MECHANICAL EQUIPMENT	
ENGINES	2 x Caterpillar C18 1150 HP
GENERATORS	2x 80 kWe, 50Hz 1500rpm
AIR CONDITIONING	Yes
STABILISERS AT ANCHOR	Yes
STABILISERS UNDERWAY	Yes
WIFI	Yes
APPROVED RYA WATER SPORTS CENTRE	Yes
AUDIO VISUAL AND COMMUNICATION EQUIPMENT	
Fold out TV in the saloon	
Pop up TV in the owner's cabin	
TV in all other cabins	
Eutel SAT TV	
Astra 1 with BBC and news channels	
Satellite Tv Channels	
Limited WiFi on 4G; no VSAT internet	
GUEST ACCOMMODATION	
1 Owner's cabin (bed measurements: 2.07m x 1.80m) with panoramic window above the bed, walk-in wardrobe and bathroom en suite. The Bathroom is separated from the owner's cabin by a wooden blade panel	
1 VIP cabin (bed measurements: 2.07m x 1.80m) with retractable curtains around the bed, walk-in wardrobe and bathroom en suite. The Bathroom is separated from the owner's cabin by wooden blade panel	
2 Twin bed cabins (bed measurements: 2.02m x 0.80m), which can be converted to double beds and also feature 1 additional pullman bed each	
Limited WiFi on 4G; no VSAT internet	
DECK FACILITIES	
SUNDECK	Pop up TV Jacuzzi for 7 Two sunpads, aft and forward Sun awning which either covers the Jacuzzi or the Jacuzzi and the sunpad aft. Dining area with two adjustable tables Bar al fresco
MAIN DECK	Dining area aft, which can be covered with a retractable sun awning Private seating area at the bow in front of the owner's cabin Fold out balcony portside
BEACH CLUB	CALYPSO I uniquely features a "dolphin camera", which can stream any guest appearances by dolphins live to the TV in the saloon and the owner's cabin
GYM EQUIPMENT	Fitness equipment including dumbbells, weight bags, weight bench Boxing set including a boxing bag, boxing pads and gloves



36M/118FT CALYPSO I CHARTER BROCHURE