

BLISS

L U X U R Y C H A R T E R Y A C H T

















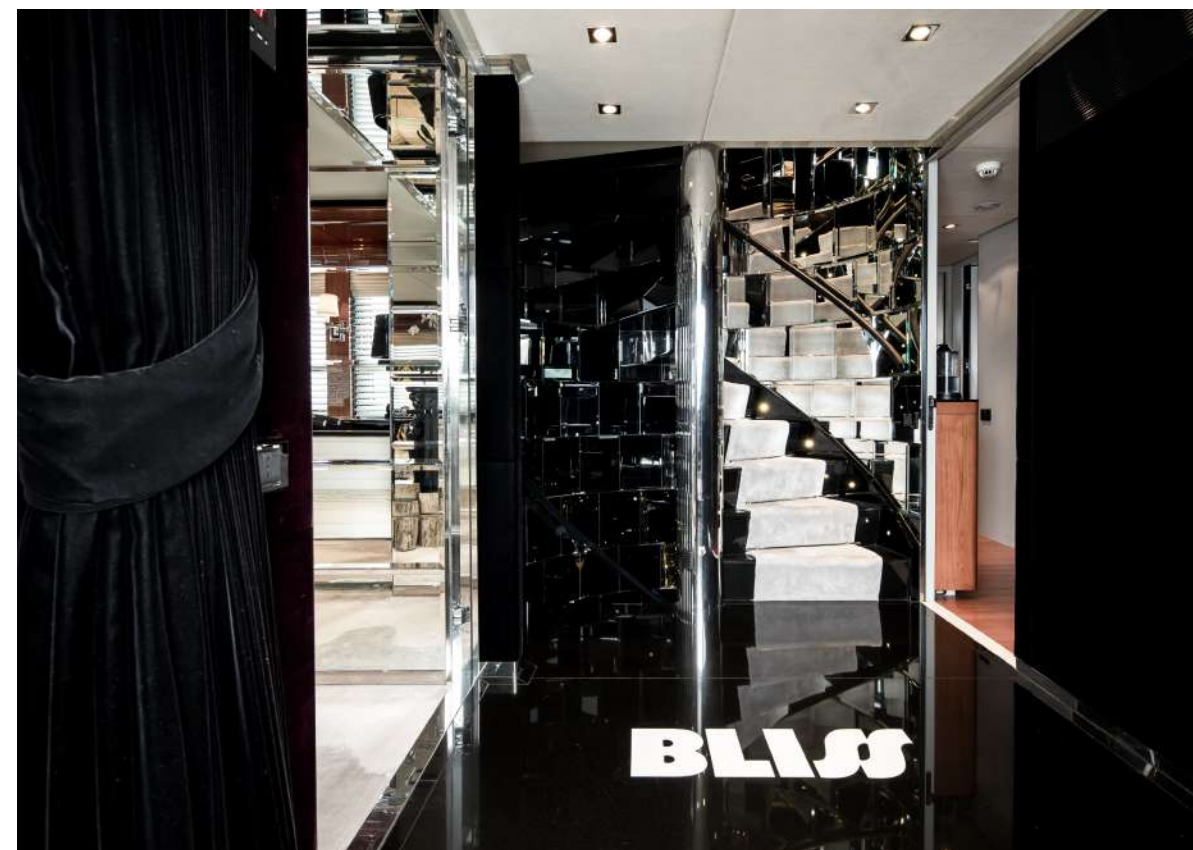






KEY FEATURES

- ▶ Accommodates 12 guests in 5 cabins
- ▶ Upper salon can be converted as an extra guest cabin
- ▶ Professional and accommodating crew
- ▶ Portuguese style seating in the bow



AMENITIES

- ▶ Vast and spacious sundeck
- ▶ Massive swim platform at stern
- ▶ Jacuzzi on board
- ▶ Portuguese style bow seating
- ▶ 13 meter Tender



TENDERS & WATER TOYS

- ▶ 1 x Sacs 13 meter tender
- ▶ 2 x Jet skis (1x3-seated Yamaha VX cruiser - 2017 1800cc & 1 x 2-seated Seadoo Spark Trixx -2017 900cc)
- ▶ 1 x 6.5m Cirrus with Steyer engine
- ▶ 1 x Williams Turbojet 325 (Rescue Boat)
- ▶ 2 Stand Up Paddleboards
- ▶ 1 x Seabob F5S
- ▶ Towables (Biscuits & Donuts)
- ▶ Snorkeling Equipment
- ▶ Diving Equipment
- ▶ Fishing Rods



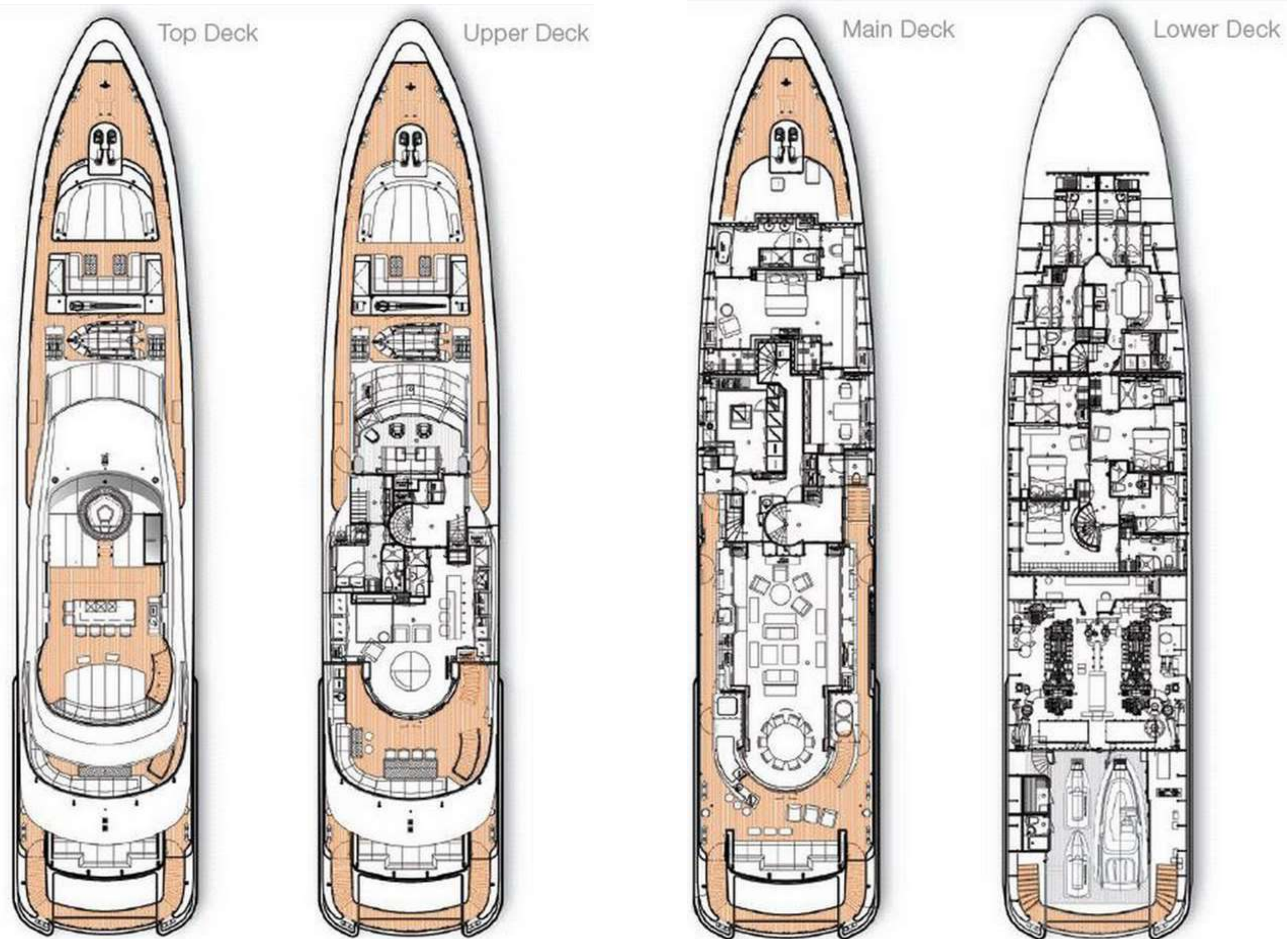
SPECIFICATIONS

Accommodates	12 Guests in 5 Staterooms
Arrangements	2 Pullman, 1 King, 3 Queen, 2 Single
Length	144'11" (44.17m)
Beam	29'6" (9.00m)
Draft	8'2" (2.50m)
Year / Refit	2007 / 2013
Builder	Heesen
Interior Designer	Palmadottir / Omega Architects
Engines	2x MTU 16V4000 M90 (2 x 2,720kw)
Cruising Speed	15 knots
Max Speed	25 knots
Fuel Consumption	1300 l/hr @ 15 knots
Range	3200 nm @ 12 knots
GRT	458



BLISS

GENERAL ARRANGEMENT



BLISS

C O N T A C T Y O U R C H A R T E R B R O K E R