



## BLACK PEARL

344' 6" (105M) | OCEANCO | 2018

# BLACK PEARL

## BASIC SPECIFICATIONS

BUILDER	FUEL TYPE	GROSS TONNAGE	CRUISING/MAX SPEED	ACCOMMODATION
Oceanco	Diesel	2864 GT	12 knots / 24 knots	12 guests in 7 cabins
INTERIOR DESIGN	EXTERIOR DESIGN	LENGTH	BEAM	HULL MATERIAL
Nuvolari Lenard	Ken Freivokh Design / Nuvolari Lenard	344' 6" (105m)	49' 3" (15m)	Steel
CREW	FLAG	BUILT/REFIT	ENGINES	
26	Cayman Islands	2018 / 0	2 x MTU - 12V 2000 M72	

## KEY FEATURES

- › **AWARD WINNING YACHT:** WORLD SUPERYACHT AWARDS 2019 (BEST SAILING YACHT 60M AND ABOVE, SAILING YACHT OF THE YEAR, ALSO DESCRIBED AS “BEST SAILING YACHT OVERALL”), BOAT INTERNATIONAL DESIGN & INNOVATION AWARDS 2019 (BEST NAVAL ARCHITECTURE FOR SAILING YACHTS), YACHTS INTERNATIONAL “BEST NEW SUPERSAIL” 2017 (AWARDED BEST NEW SUPERSAIL FOR ITS GROUNDBREAKING DYNARIG DESIGN AND HYBRID PROPULSION INNOVATION)
- › **ZERO-FOSSIL FUEL OPERATIONAL CAPABILITY** DESIGNED WITH A ZERO FOSSIL FUEL OPERATIONAL CAPABILITY WHILE SAILING, SHE SETS A NEW BENCHMARK FOR ECO-CONSCIOUS SUPERYACHTS, WITH A REMARKABLE RANGE OF 5,400 NAUTICAL MILES.
- › **LARGEST SAILING YACHT EVER BUILT:** ONE OF THE LARGEST SAILING YACHTS EVER CONSTRUCTED, OFFERING UNMATCHED SCALE AND ELEGANCE.
- › **UNIQUE ENTERTAINMENT FEATURES:** A LARGE NIGHTCLUB AREA, A FULL-BEAM BEACH CLUB WITH TERRACE DOORS THAT CONVERT INTO A CINEMA, THE LARGEST OUTDOOR CINEMA SCREEN ON THE MIZZEN MAST (14M X 9M), AND A JET STREAM POOL WITH A FLOOR THAT LIFTS TO CONVERT INTO A DANCE FLOOR
- › **PIONEERING SUSTAINABLE LUXURY:** DEVELOPED BY AN ELITE TEAM, INCLUDING OCEANCO, DYKSTRA NAVAL ARCHITECTS, KEN FREIVOKH, NUVOLARI LENARD, AND BMT NIGEL GEE, BLACK PEARL SETS A NEW STANDARD FOR SUSTAINABLE LUXURY AT SEA, INSPIRING THE NEXT GENERATION OF SUSTAINABLE SUPERYACHTS.
- › **IMPRESSIVE SAILING PERFORMANCE** EQUIPPED WITH THREE 70-METER DYNARIG CARBON MASTS, BLACK PEARL BOASTS 2,934 SQUARE METERS OF SAIL AND CAN REACH SPEEDS OF 24+ KNOTS. ALL SAILS ARE AUTOMATICALLY CONTROLLED AND LAUNCHED IN UNDER SEVEN MINUTES.
- › **ELEGANT INTERIOR DESIGN:** AN INTERIOR INSPIRED BY LOUIS XVI, FEATURING SUMPTUOUS FABRICS, EXQUISITE DETAILING, AND SOPHISTICATED ELEGANCE THROUGHOUT.
- › **WELLNESS AND NIGHT LOUNGE:** A DEDICATED WELLNESS SPA, FEATURING A SAUNA, HAMMAM, MASSAGE ROOM, AND GYM, WHICH DOUBLES AS A LUXURIOUS NIGHT LOUNGE WITH A STAR-STUDDED CEILING.

## WATER TOYS

- › PASCOE LIMO TENDER (10.40M)
- › WILLIAMS OPEN TENDER (5.65M)
- › FLITE BOARD
- › WATER SKIS
- › 2 X CAYAGO SEABOBS
- › SNORKELLING EQUIPMENT
- › PASCOE BEACHLANDER TENDER (9.8M)
- › 6 X SUPS ( 4 SOLID & 2 INFLATABLE)
- › 4 X TWO-PERSON KAYAKS
- › WAKEBOARDS
- › 2 X WAVERUNNER JET SKIS







BLACK PEARL



BLACK PEARL



BLACK PEARL



BLACK PEARL



BLACK PEARL



BLACK PEARL



BLACK PEARL



BLACK PEARL











BLACK PEARL





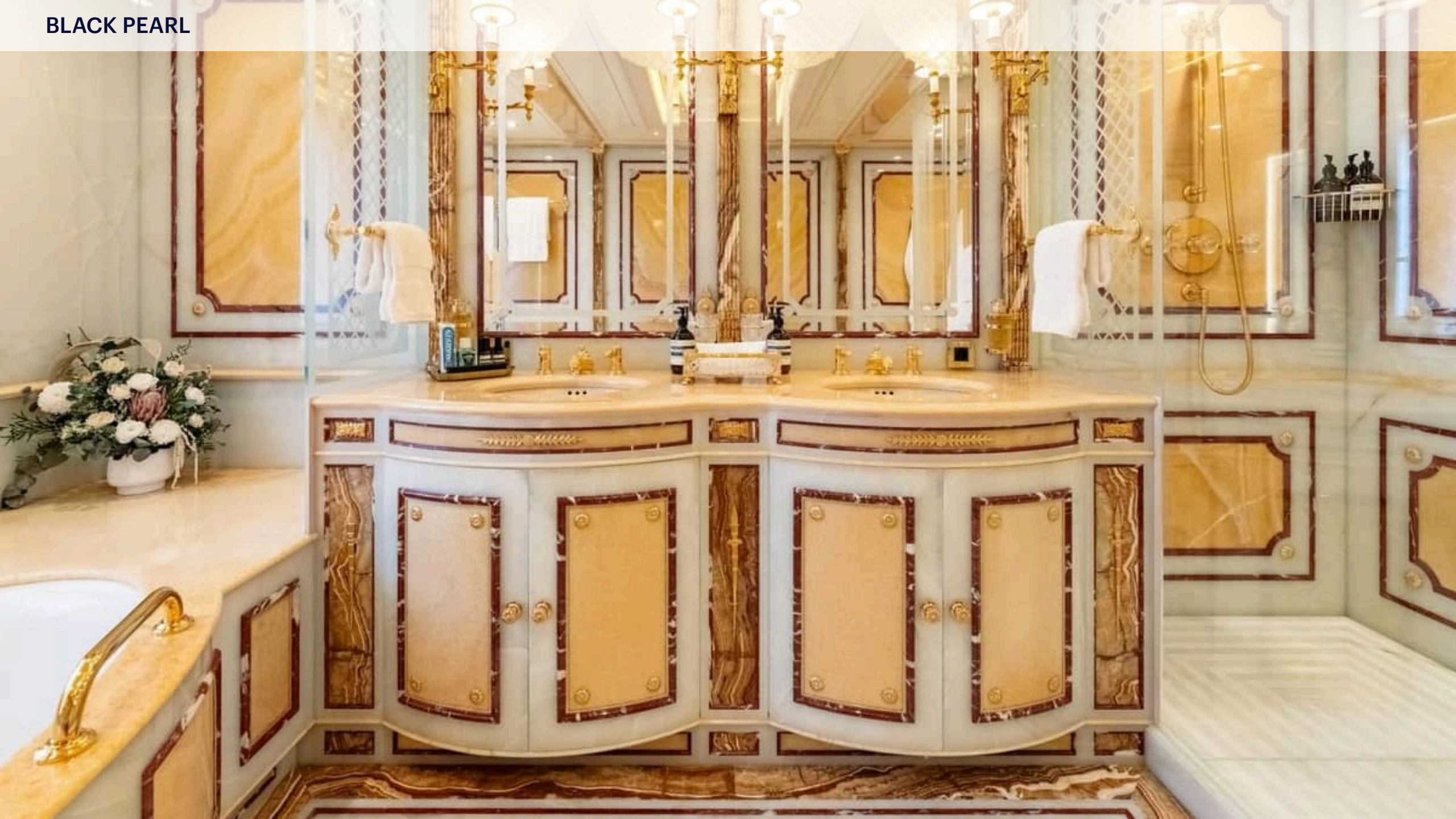
BLACK PEARL

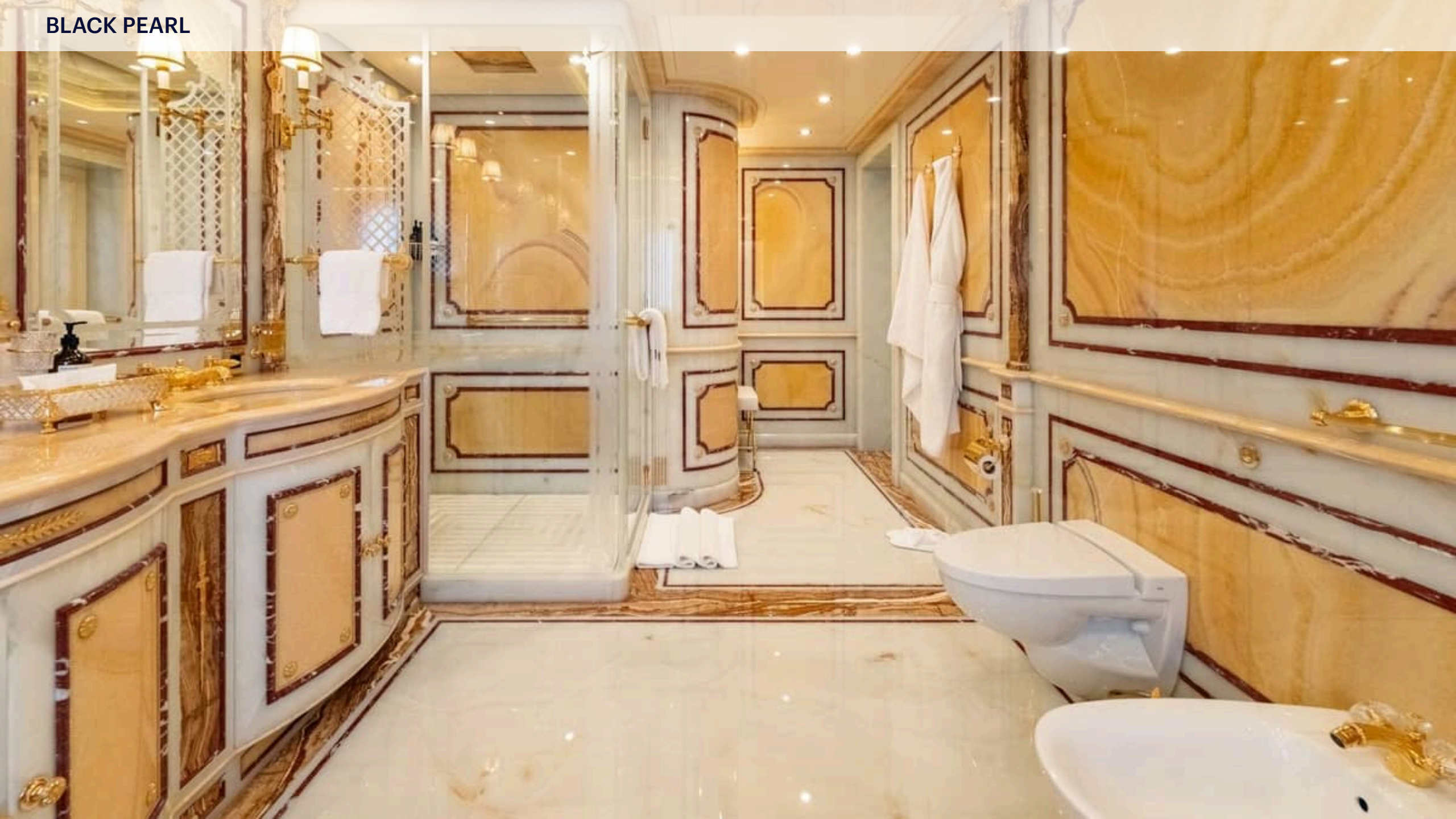






BLACK PEARL











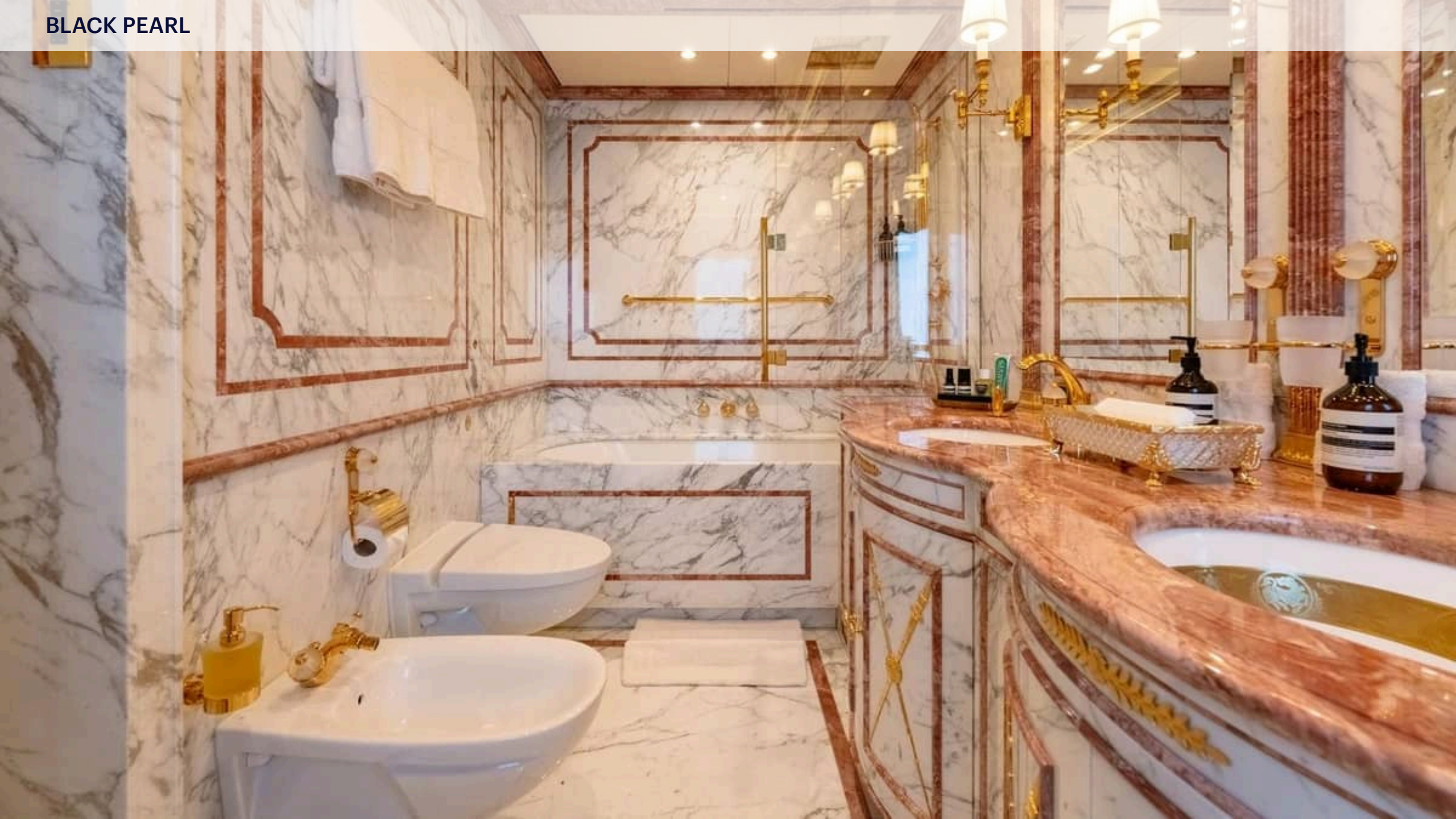


BLACK PEARL



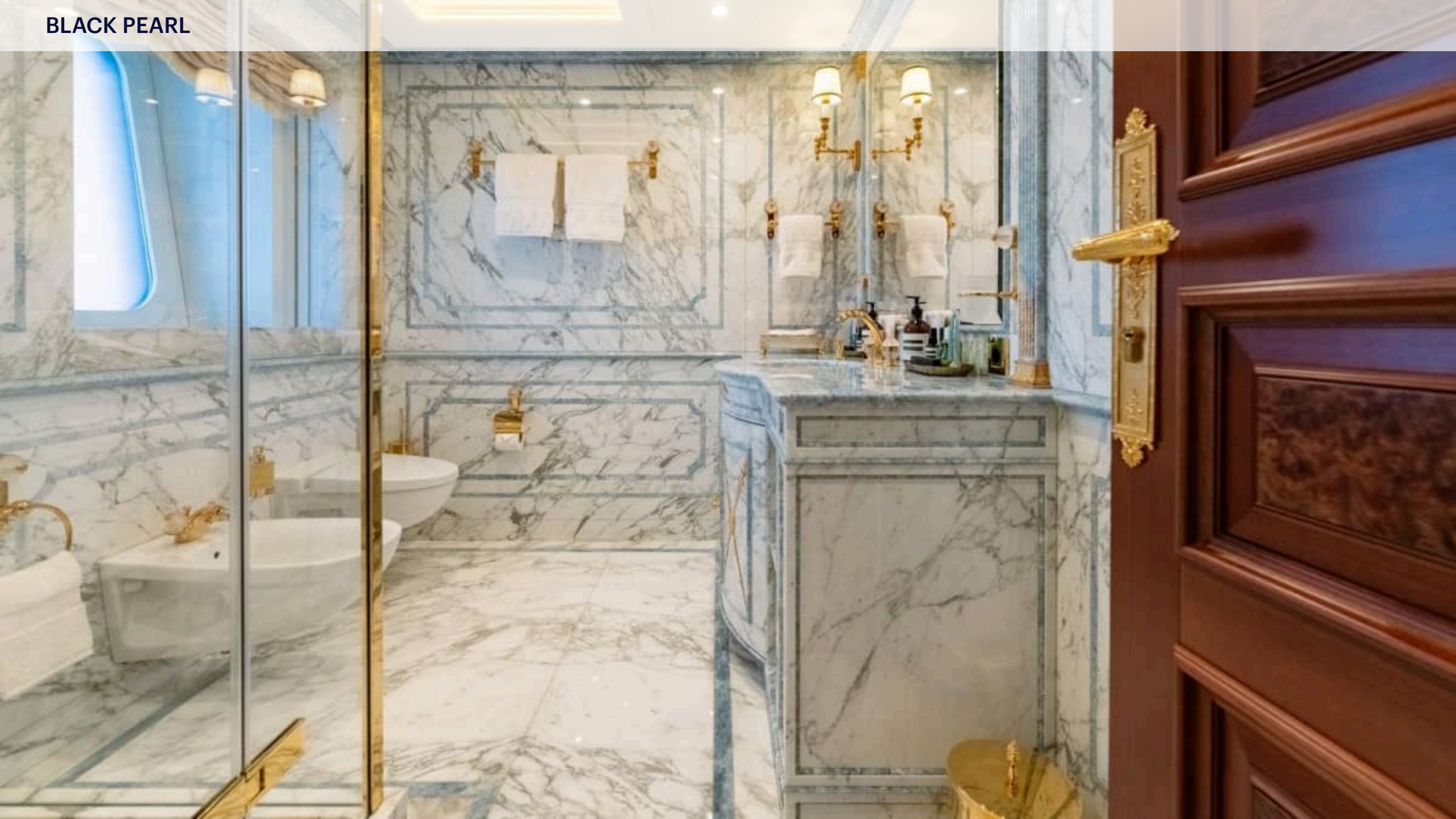








BLACK PEARL





BLACK PEARL











BLACK PEARL



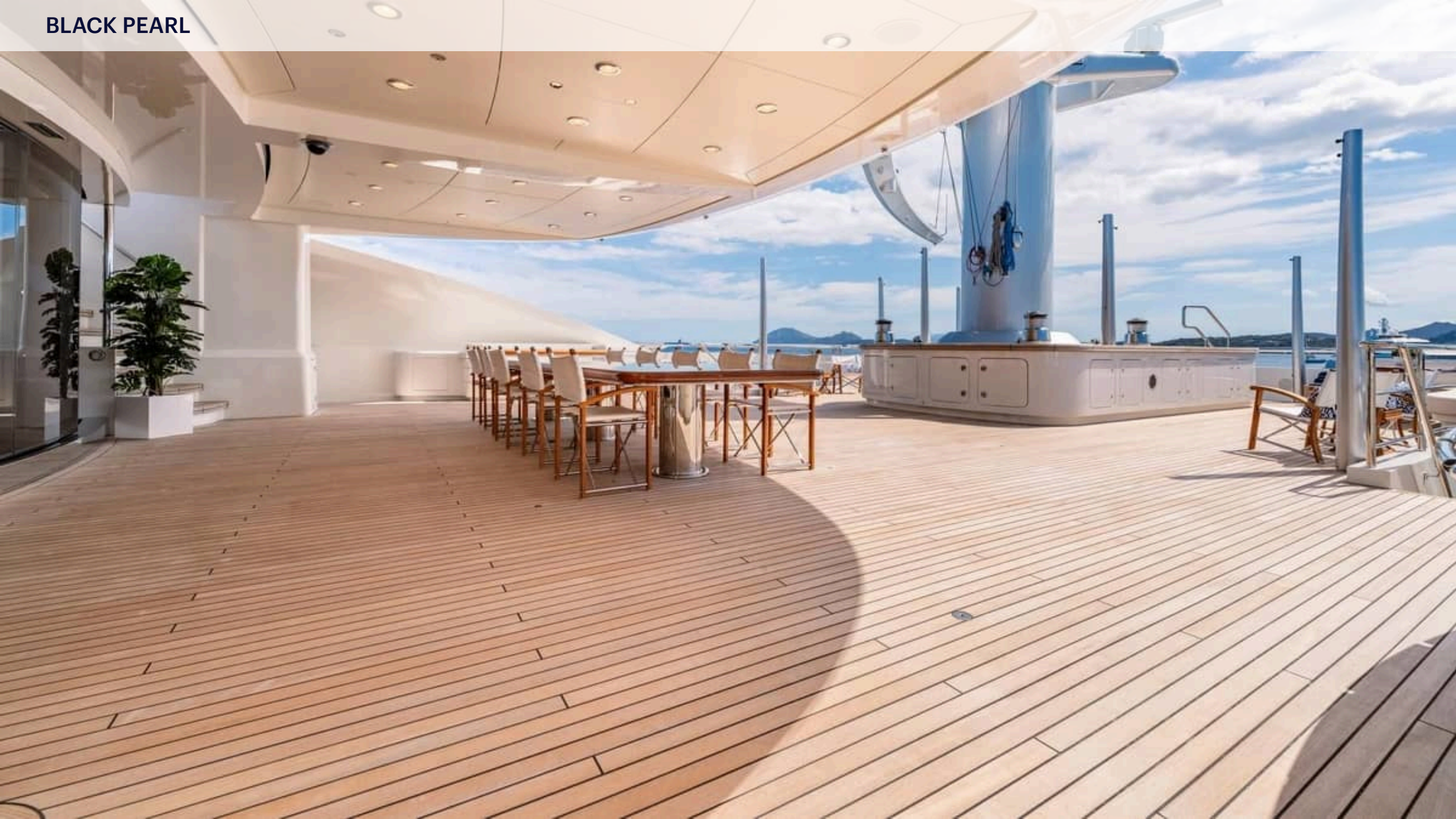
BLACK PEARL



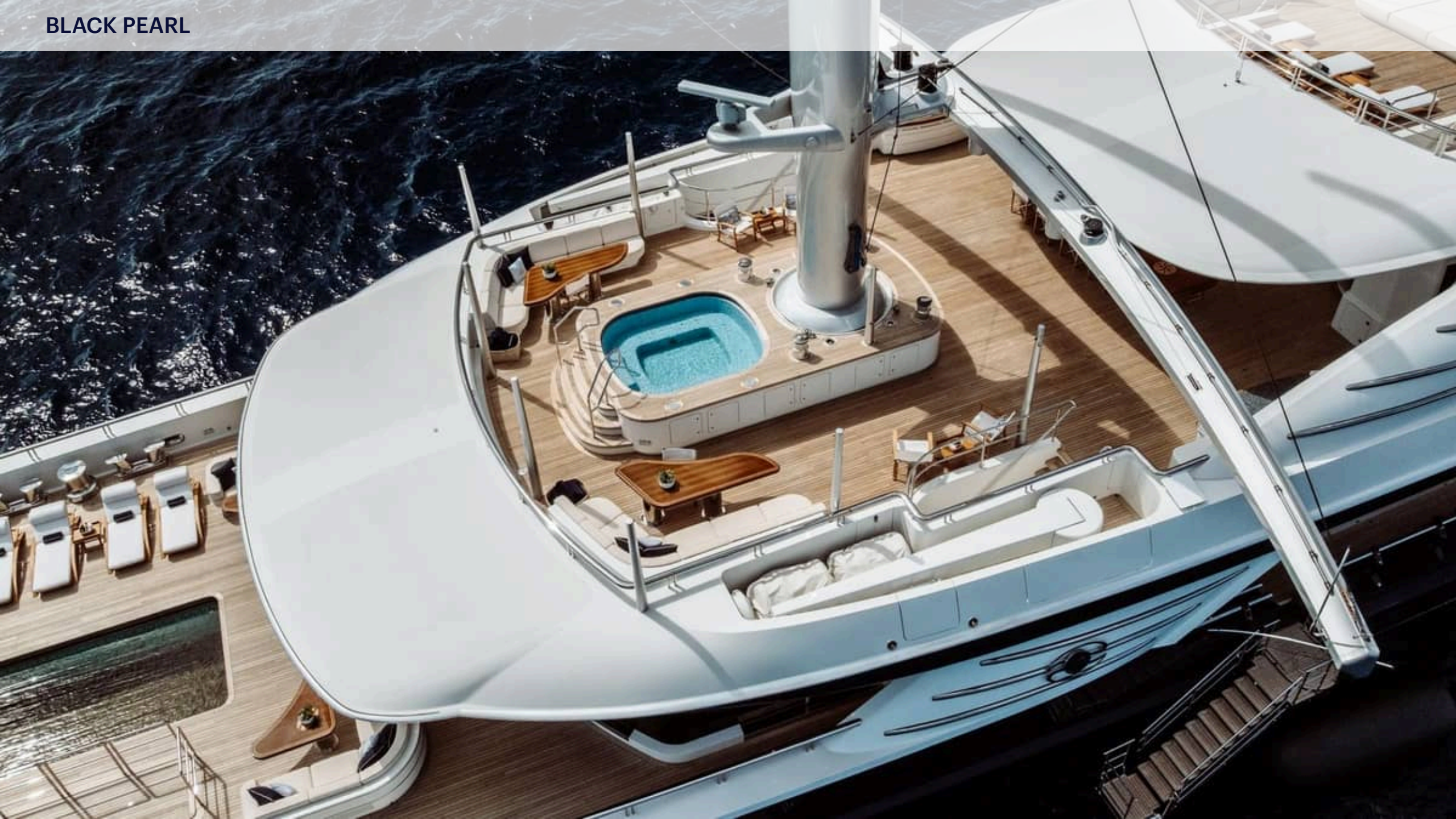
BLACK PEARL



BLACK PEARL



BLACK PEARL



BLACK PEARL



BLACK PEARL



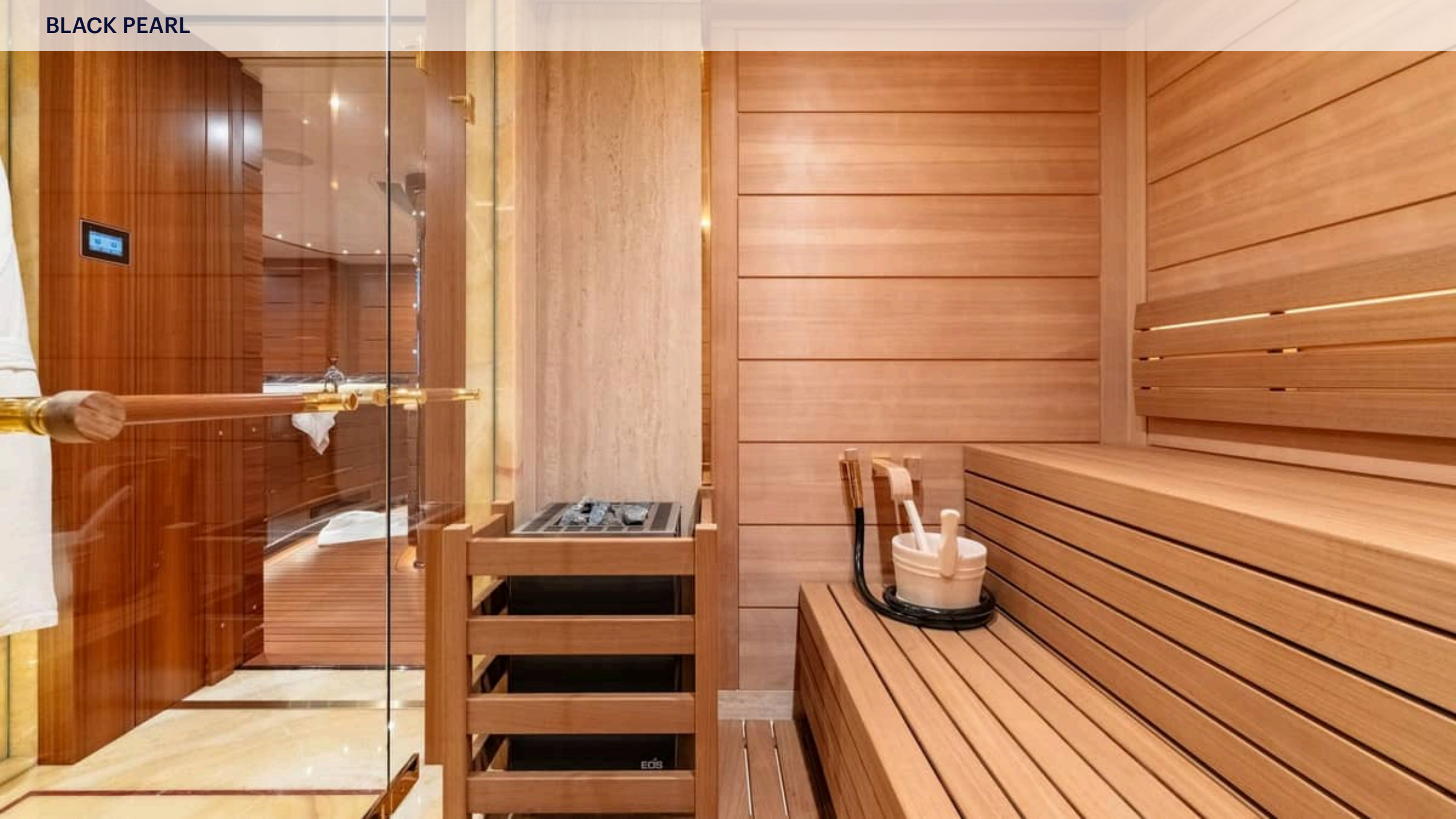
BLACK PEARL



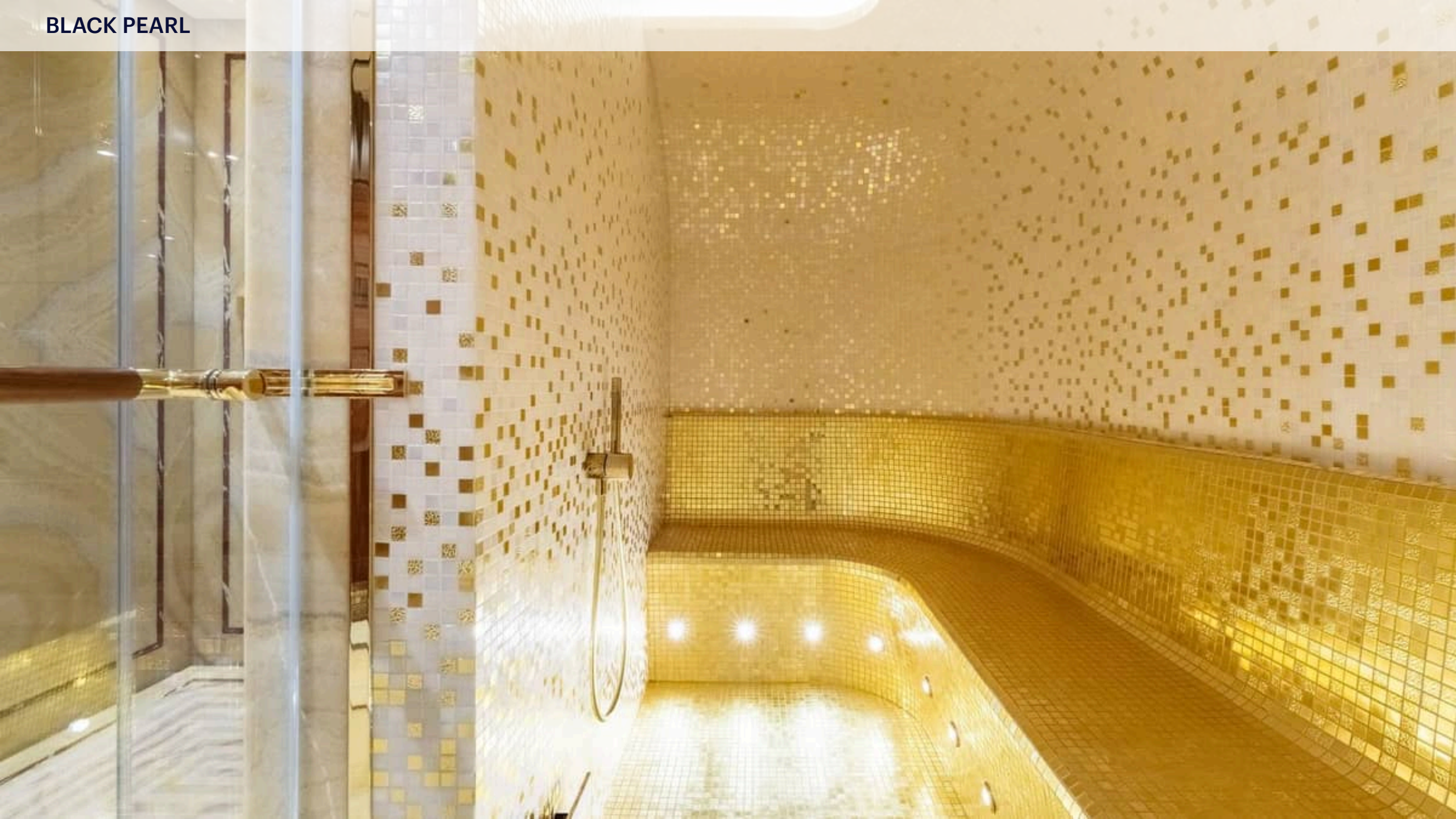
BLACK PEARL



BLACK PEARL



BLACK PEARL

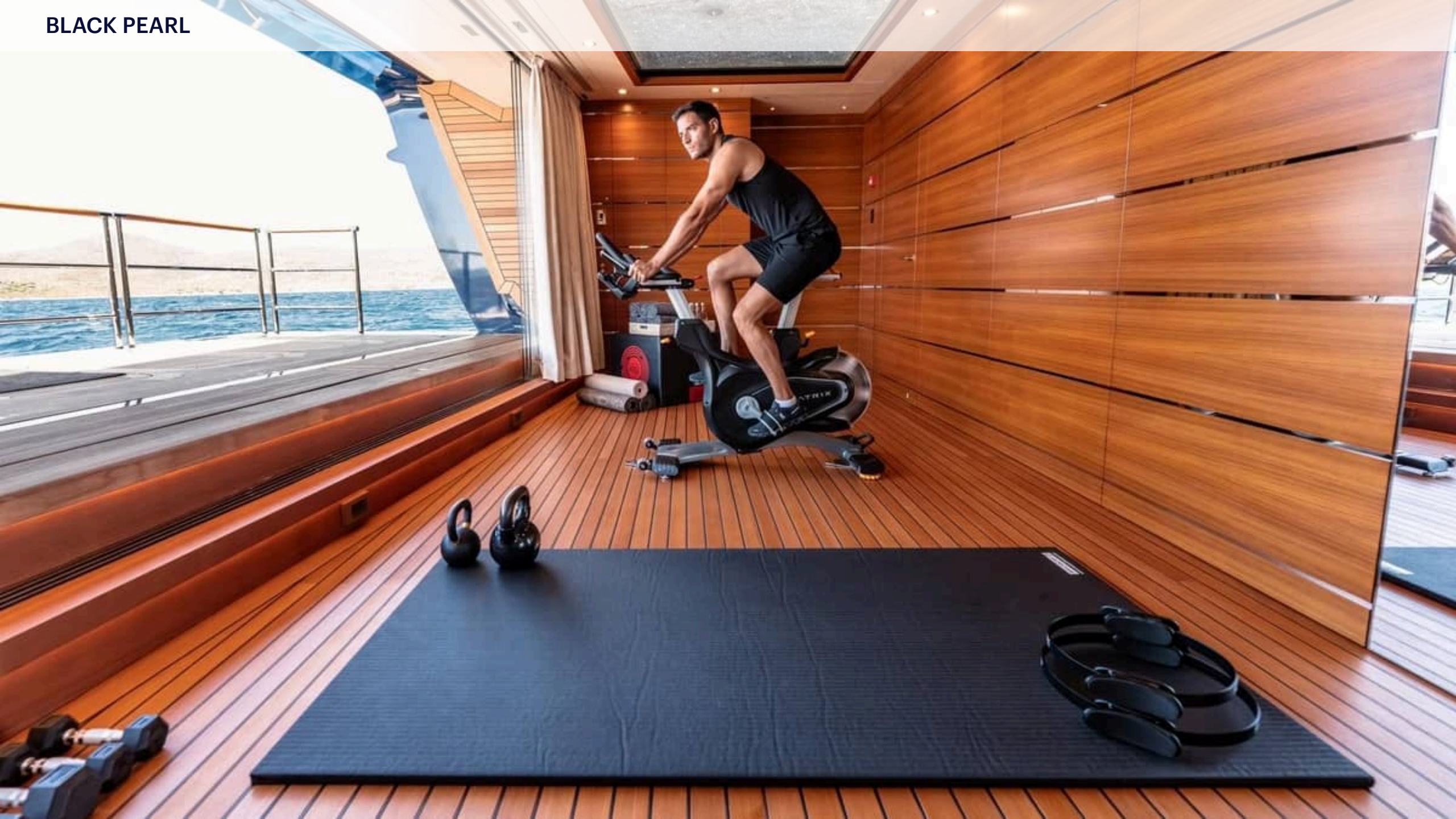








BLACK PEARL





BLACK PEARL



BLACK PEARL



BLACK PEARL



BLACK PEARL



BLACK PEARL



BLACK PEARL



BLACK PEARL

