

Trident

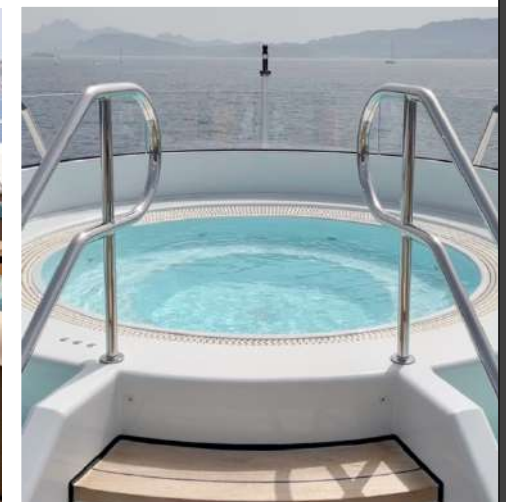


Welcome Aboard

It gives us great pleasure to introduce to you the ultimate in luxury chartering. *Trident* synthesizes six decades of Feadship excellence and experience into a superlative yacht that offers every comfort imaginable. Exquisitely finished, superbly equipped, *Trident* was designed to provide charter guests with unprecedented levels of hospitality and service. The vacation of a lifetime beckons.



Trident



Relax Sundeck/ Jacuzzi Area

BRIDPORT



Bon Appetite Dining Deck



World Class Chefs Haute cuisine is made easy by our highly talented chefs on board Trident.



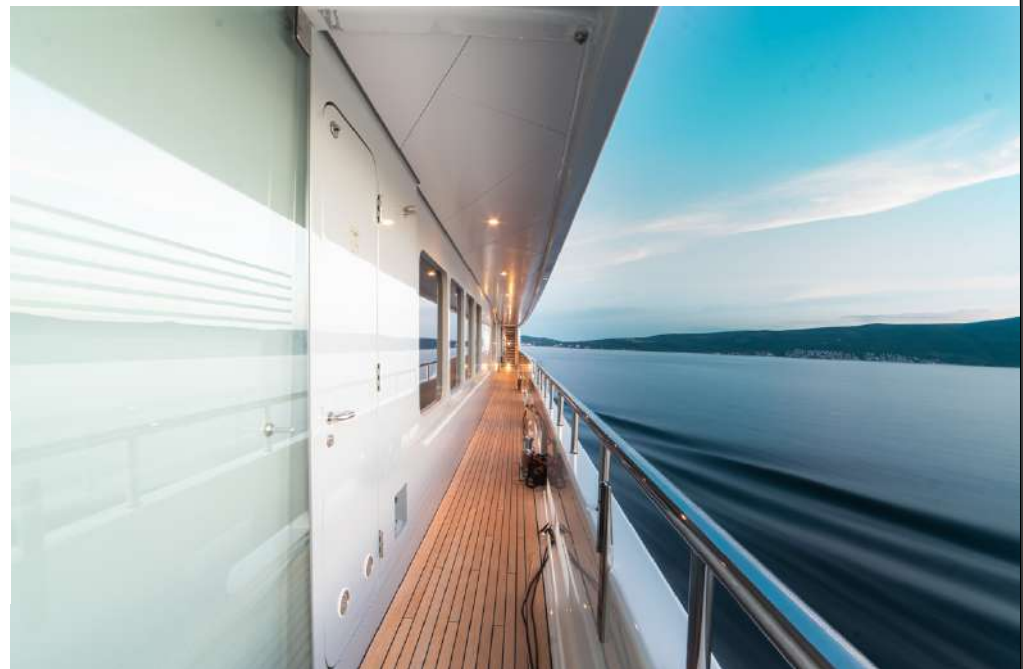
Lounge & Play Sky Lounge



TRIDENT



Shaded Comforts
Aft Deck

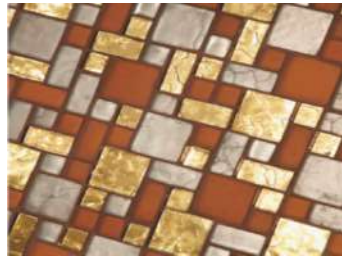




A Peaceful Space Main Salon



Master Stateroom



Master Stateroom | His & Her Bathroom



TRIDENT



FOCUS Private Office

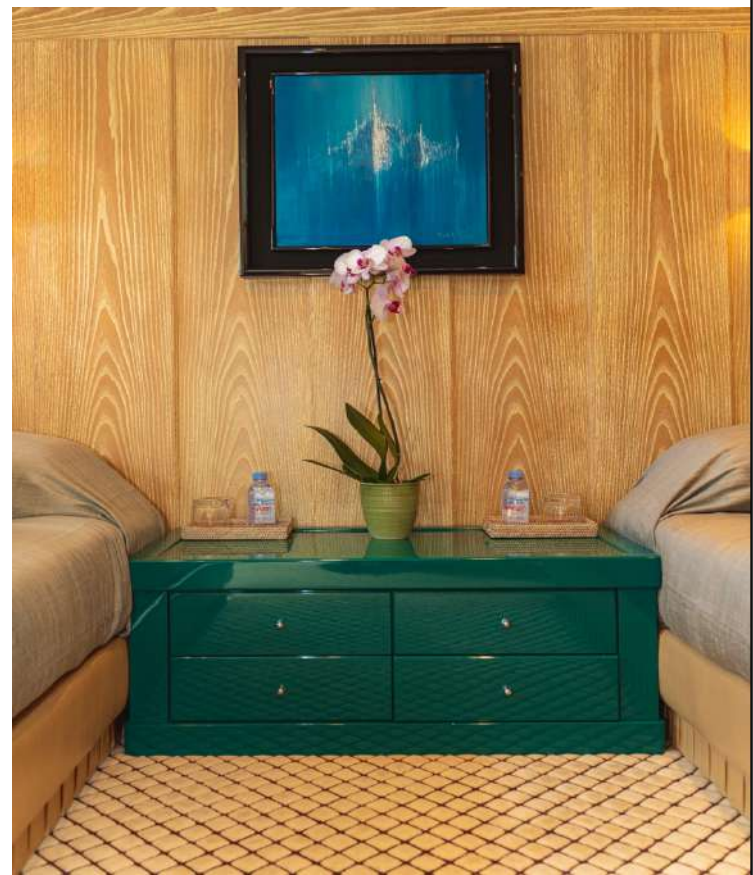


VIP Stateroom

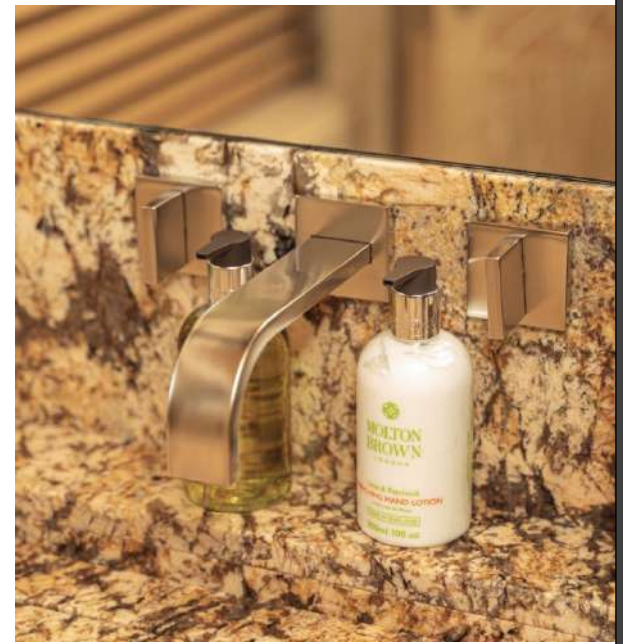




BRIDENT



Guest Stateroom



Guest Stateroom | Bathroom

Sun deck

1. Sun deck aft
2. Sun deck foyer
3. Powder room
4. Jacuzzi

Bridge deck

5. Bridge deck aft
6. Bridge deck lounge
7. Lounge bar
8. Powder room
9. Pantry
10. Ship's office
11. Captain's cabin
12. Wheelhouse

Main deck

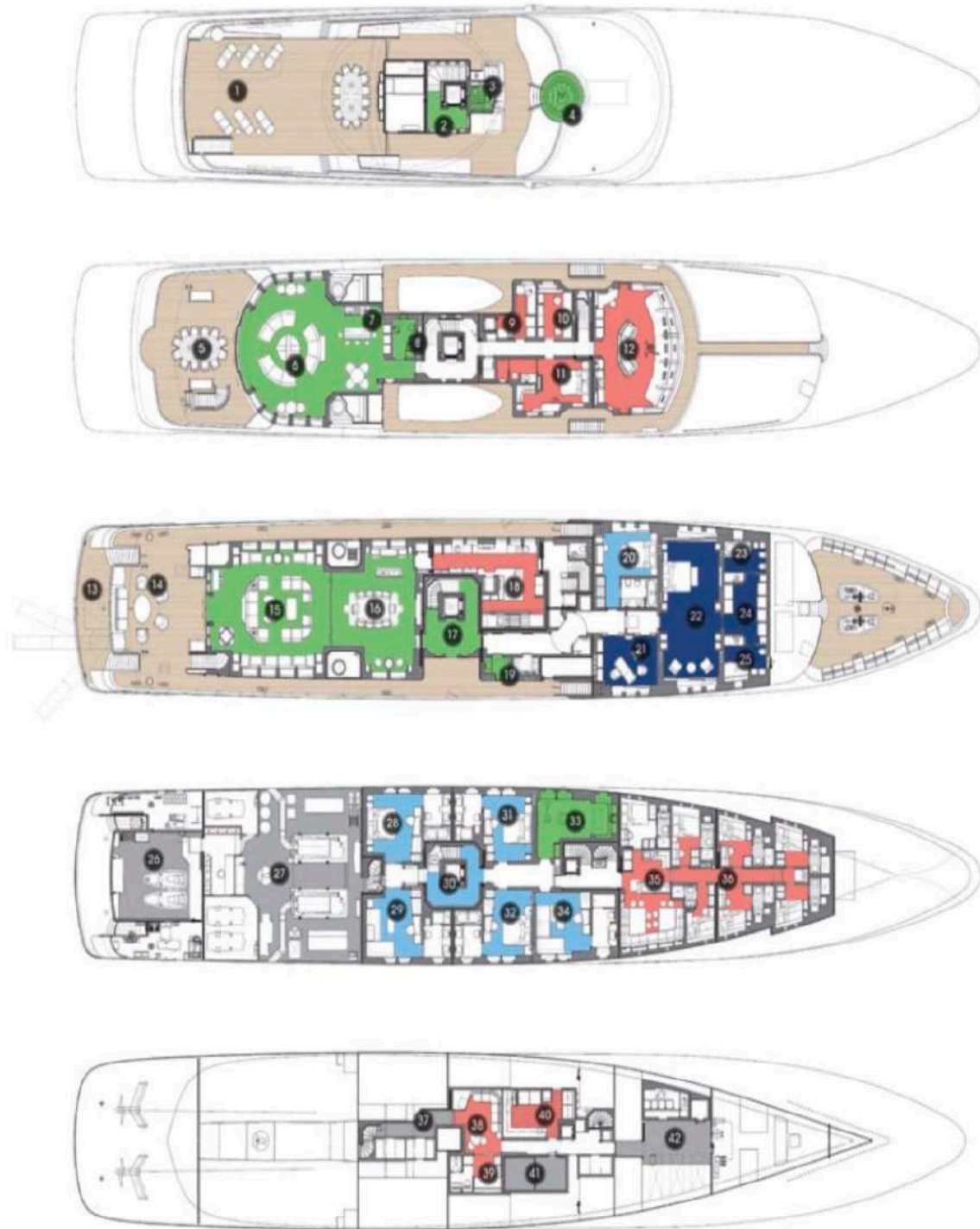
13. Beach platform
14. Beach/ swim platform
15. Main lounge
16. Dining room
17. Main entrance
18. Galley
19. Powder room
20. VIP stateroom
21. Private office
22. Master stateroom
23. Her bathroom
24. Dressing room
25. His bathroom

Lower deck

26. Lazarette
27. Engine room
28. Guest stateroom 1
29. Guest stateroom 2
30. Foyer
31. Guest stateroom 3
32. Guest stateroom 4
33. Guest stateroom 6
34. Guest stateroom 5
35. Crew mess
36. Crew cabins

Tank deck

37. Storage aft
38. Crew lounge
39. Staff cabin
40. Laundry room
41. Cool / freezer store
42. Ship's store / technical space



Technical

Crew

Guest

Owner

General

TRIDENT

Trident



Accommodations

Sleeps fourteen guests in seven*) staterooms (sleeps twelve guests during charter)

- One full-beam master stateroom with king size bed, his and her bathrooms and dressing room on main deck
- One VIP stateroom with queen size bed on main deck
- Five guest staterooms with king size bed, of which two staterooms have US King size bed convertible to two XL Twin size beds, on lower deck

*) Flexible setup allows for the following alternate configurations:

- Six stateroom layout includes master stateroom and VIP stateroom on main deck, plus one VIP stateroom and three guest staterooms on lower deck
- Five stateroom layout includes master stateroom and VIP stateroom on main deck, plus two VIP staterooms and one guest stateroom on lower deck

All rooms have full bathroom with shower and/or bath ensuite.

Entertainment

- Large LCD high definition flat screen TVs in all guest areas
- Bridge deck lounge convertible to cinema
- Jacuzzi on sun deck
- Miscellaneous gym equipment: Technogym Bike, Technogym Treadmill, Technogym Dumbbells, yoga mats, massage table
- Sat TV, surround sound, DVD/CD, internet
- Sophisticated AV and IT system with Kaleidescape library of music & movies
- Four iPod Docking Stations: (1) main lounge, (2) bridge deck lounge, (3) gymnasium, (4) central audio visual rack system
- WiFi coverage throughout
- Miscellaneous beach toys

Water sports

- 1x 6.7m (22') Chris Craft Corsair tender (190 HP Volvo Diesel Engine)
- 1x 6.7m (22') Chris Craft Launch bowrider tender (190 HP Volvo Diesel Engine)
- 1x Yamaha VX Waverunner
- 1x Yamaha Superjet jet-ski
- 1x Laser Sailboat
- 2x Hobie Maui Kayaks
- 2x Mistral Surfboards
- Water skis, wakeboards and pull toys
- Floating slide and floating trampoline
- Snorkel and scuba gear (rendezvous diving only during charter – restrictions apply)

Communications

- 2x GSM
- Satcom Phone & Fax
- 4x dedicated VOIP Lines
- High Speed Wireless Internet through mini-VSAT Broadband Service
- SSB and VHF Radios
- GMDSS
- FB 500

Specifications

Year:	2009
Builder:	Feadship – Royal Van Lent
Length overall:	65.22m 214'
Beam overall:	11.50m 37'9"
Draft (loaded):	3.40m 11'2"
Type:	full displacement motor yacht, steel hull & aluminum superstructure
Fuel capacity:	148,000 liters
Fresh water capacity:	29,000 liters
Main engines:	2x 1,400kW MTU 16V4000M6DR diesels
Speed:	13 knots cruising/ 16 knots maximum
Range:	6,700 NM at cruising speed
Stabilizers:	Zero-speed
Naval Architect:	De Voogt Naval Architects
Exterior styling:	Donald Starkey Design
Interior styling:	Donald Starkey Design
Classification:	Lloyd's & MCA
Crew:	14-16