

AWOL

L U X U R Y   C H A R T E R   Y A C H T





















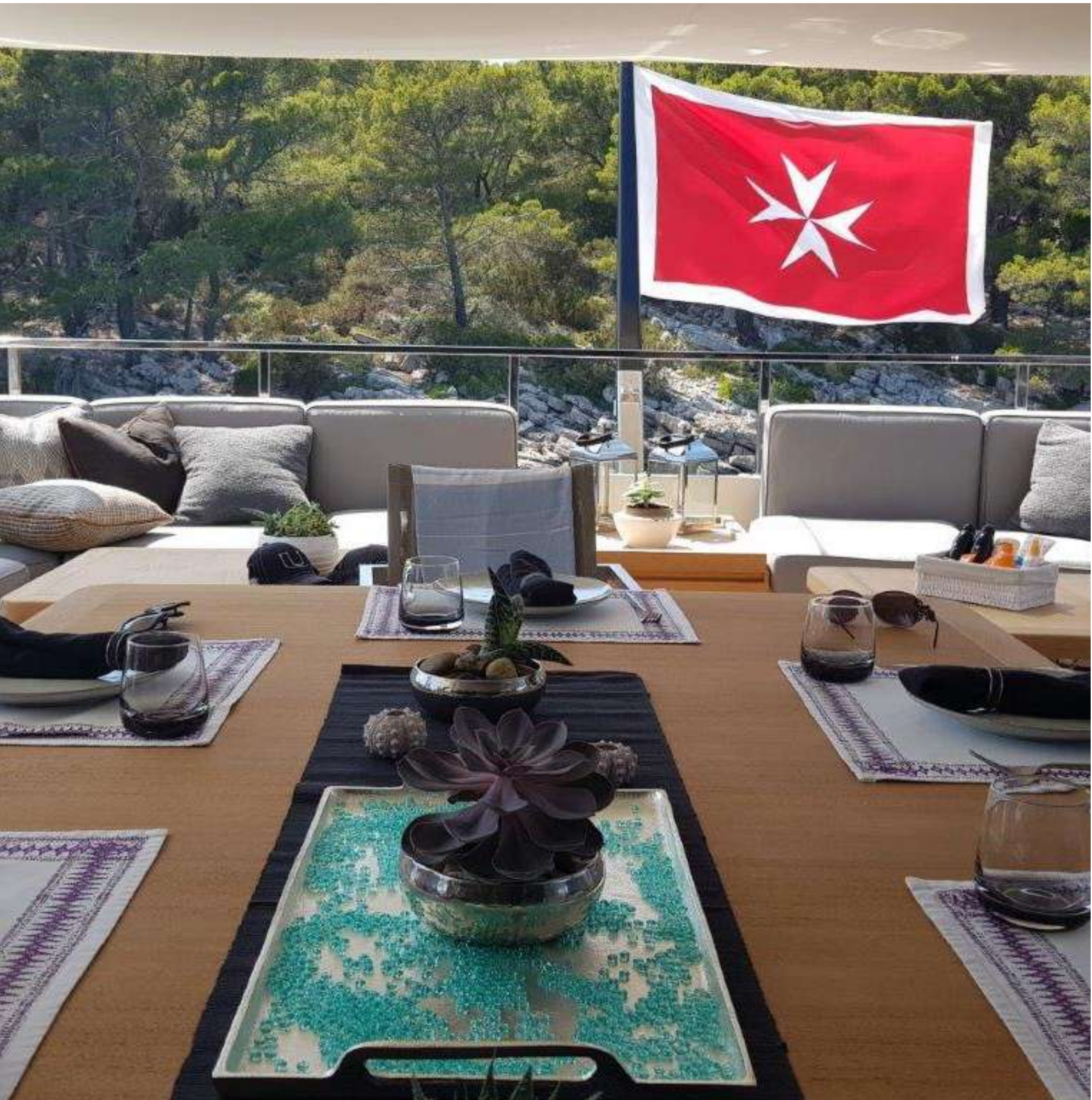






























# KEY FEATURES

- ▶ Large deck space for eventsMassive swim platform at stern
- ▶ Jacuzzi on board
- ▶ All new Paola Lenti exterior furniture
- ▶ Professional and accommodating crew
- ▶ Zero Speed Stabilisers





# AMENITIES

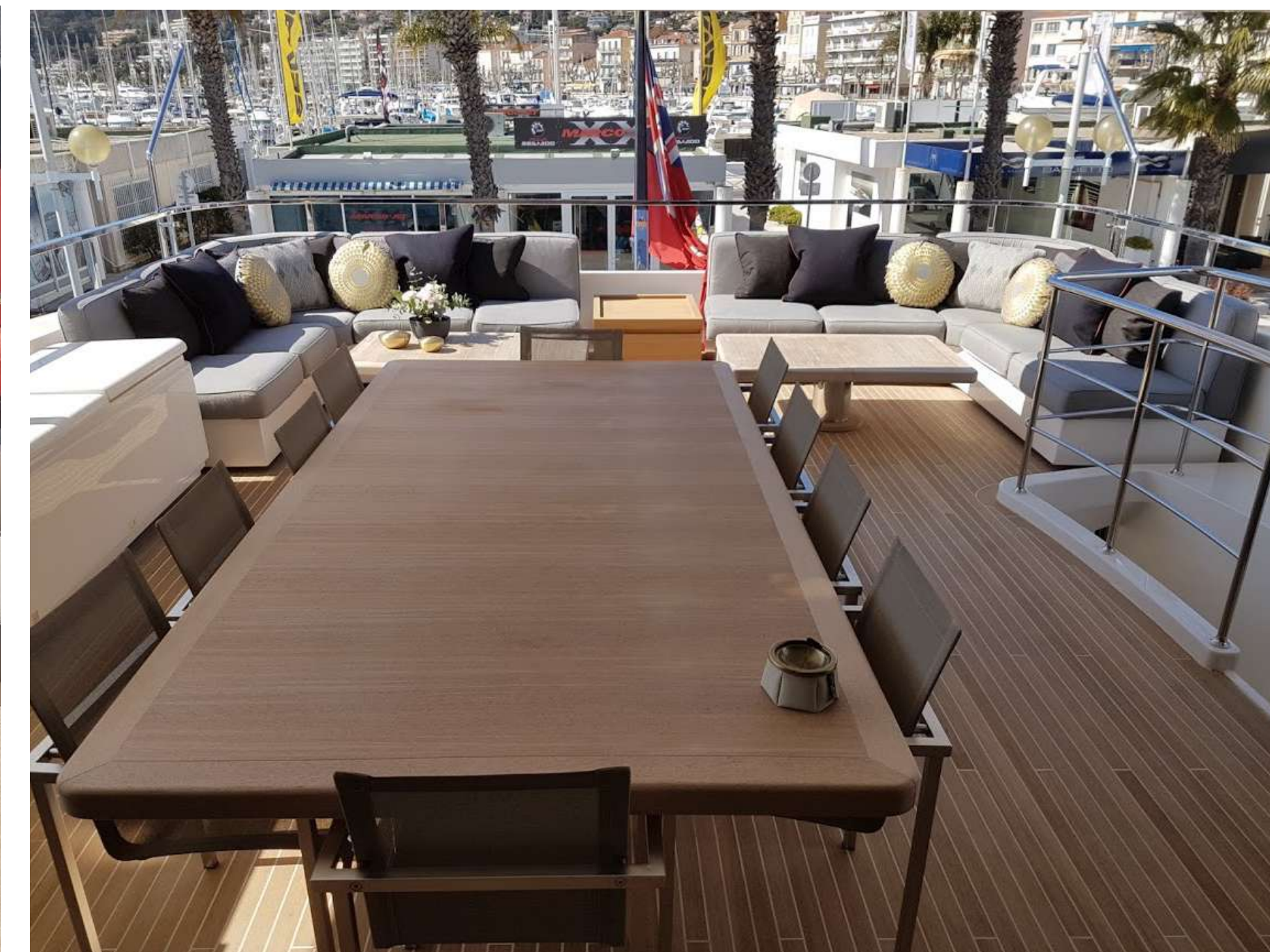
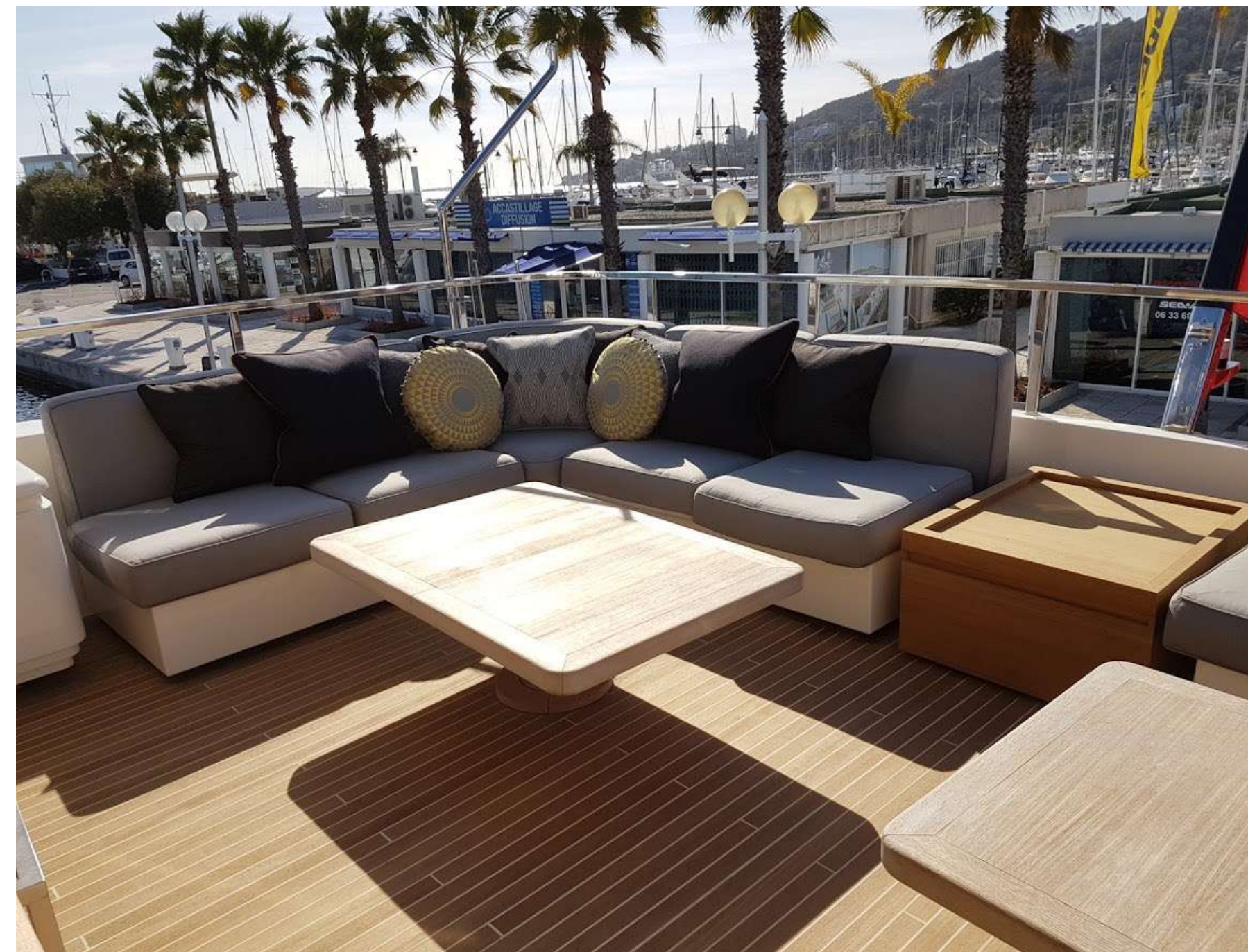
- ▶ Vast and spacious sundeck
- ▶ Massive swim platform at stern
- ▶ BBQ & Jacuzzi on board
- ▶ Portuguese style seating in the bow
- ▶ Paola Lenti exterior furniture





# TENDERS & WATER TOYS

- ▶ 37' Axopar Sun-Top chase tender: "Chasing AWOL" (Chasing A Way Of Life)
- ▶ 2x SeaBob with fast charger
- ▶ 2x Oean Carver electric jet board
- ▶ 2x inflatable SUP with 4x paddles
- ▶ 1x inflatable ocean pool with anti jelly fish net
- ▶ 2x inflatable canoe's
- ▶ Snorkeling gear for adults and children
- ▶ Fins for adults and children
- ▶ 1x inflatable doughnut for 3 people
- ▶ 1x wakeboard
- ▶ 1x water ski's
- ▶ 5 x electric land scooters for kids and adults
- ▶ Boardgames, cards, poker set





# SPECIFICATIONS

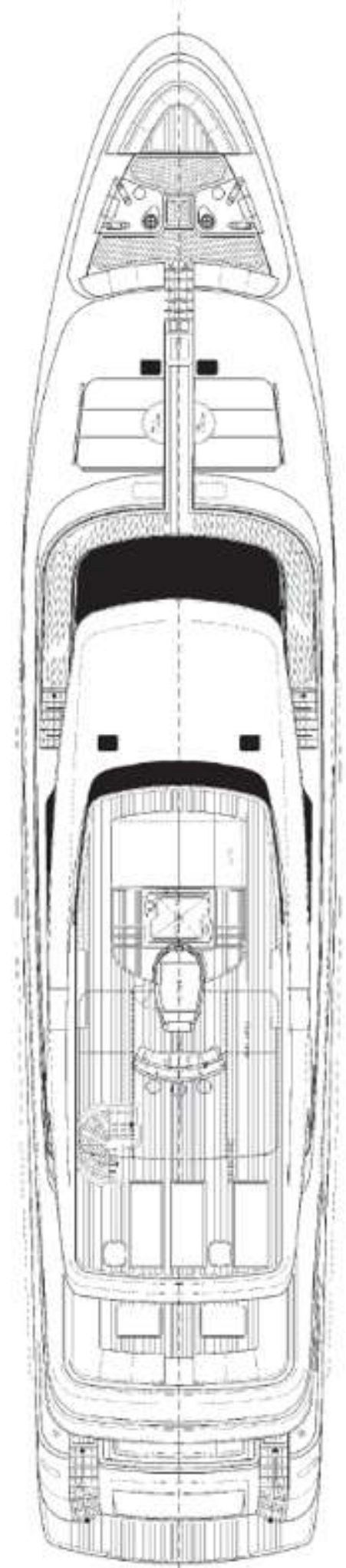
Accommodates	12 Guests in 5 Staterooms
Arrangements	2 Pullman, 1 King, 2 Queen, 4 Single
Length	122'10 (37.44m)
Beam	24'9" (7.54m)
Draft	7'5" (2.25m)
Year / Refit	2009 / 2017
Builder	Sanlorenzo
Interior Designer	Francesco Pascowski
Engines	2 x Caterpillar C32 1,624 HP
Cruising Speed	14 knots
Max Speed	17 knots
Fuel Consumption	340 l/hr @ 14 knots
GRT	308



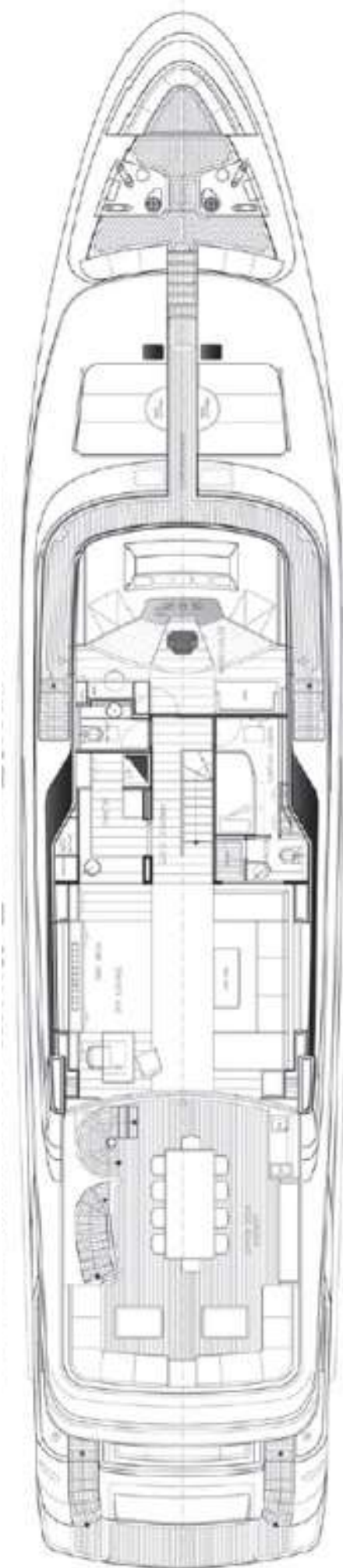
AWOL



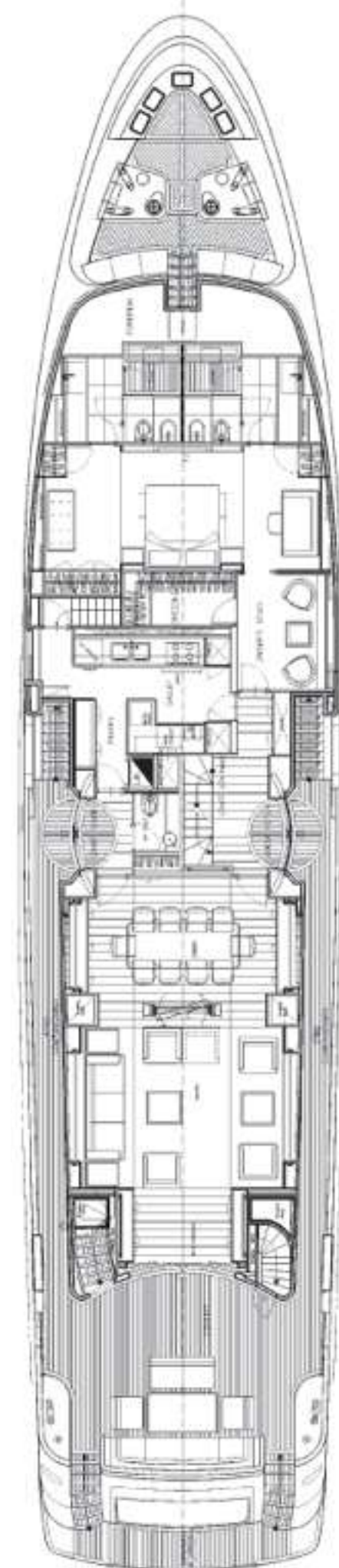
# GENERAL ARRANGEMENT



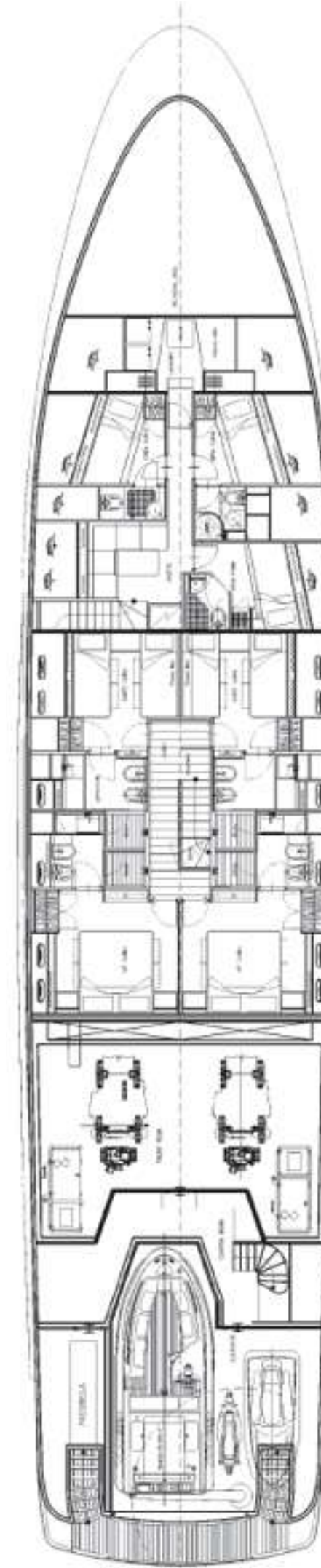
Fly Bridge



Upper Deck



Main Deck



Lower Deck



AWOL

C O N T A C T   Y O U R   C H A R T E R   B R O K E R