



ARTEMY

116' 2" (35.4M) | AZIMUT | 2008

ARTEMY

BASIC SPECIFICATIONS

BUILDER

Azimut

GROSS TONNAGE

250 GT

CRUISING/MAX SPEED

21 knots / 24 knots

ACCOMMODATION

12 guests in 6 cabins

INTERIOR DESIGN

Carlo Galeazzi

LENGTH

116' 2" (35.4m)

BEAM

24' 4" (7.4m)

HULL MATERIAL

GRP

CREW

6

FLAG

Maltese

BUILT/REFIT

2008 / 2023

DRAFT (F/M)

8' 3" (2.5m)

ENGINES

MTU 3580 KW

KEY FEATURES

- › RECENTLY REFITTED (2023), BLENDING TIMELESS ITALIAN ELEGANCE WITH A FRESH, MODERN INTERIOR
- › SPACIOUS SWIM PLATFORM FOR EFFORTLESS SEA ACCESS AND WATER ACTIVITIES
- › ACCOMMODATION FOR UP TO 12 GUESTS IN 6 WELL-APPOINTED CABINS
- › ONE OF THE LARGEST FLYBRIDGES IN HER CLASS, IDEAL FOR OUTDOOR LIVING, DINING & ENTERTAINMENT
- › FULL-BEAM MASTER SUITE OFFERING EXCEPTIONAL SPACE AND COMFORT
- › HIGH CRUISING SPEED FOR FAST AND COMFORTABLE ISLAND-HOPPING ACROSS THE ADRIATIC

WATER TOYS

- › CHASE TENDER CANTIERI CAPELLI 7M WITH EVINRUDE ENGINE 200KS
- › SEADOO SPARK JET-SKI 90 KS
- › 3 X WAKEBOARDS
- › 1 X DOUGHNUT
- › 4 X SNORKELLING EQUIPMENT
- › LIGHT WEIGHTS
- › YAMAHA WAVERUNNER JET-SKI 110 KS
- › 2 X WATER SKIES
- › 2 X SEABOB F5S
- › 3 X PADDLE BOARD
- › GYM EQUIPMENT:
- › YOGA MATTS

ARTEMY



ARTEMY



ARTEMY



ARTEMY



ARTEMY



ARTEMY



ARTEMY

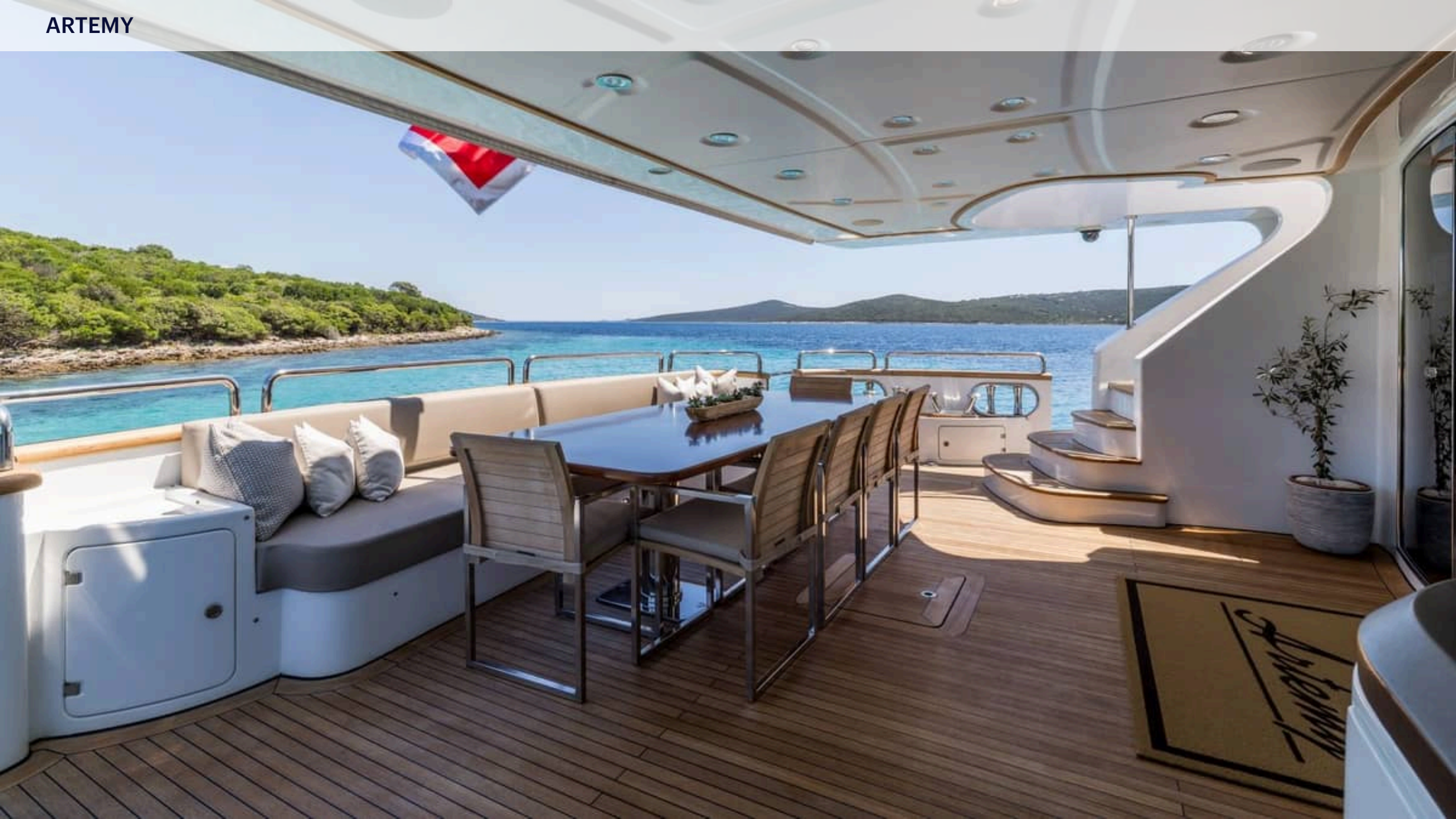




ARTEMY



ARTEMY









ARTEMY







ARTEMY





ARTEMY



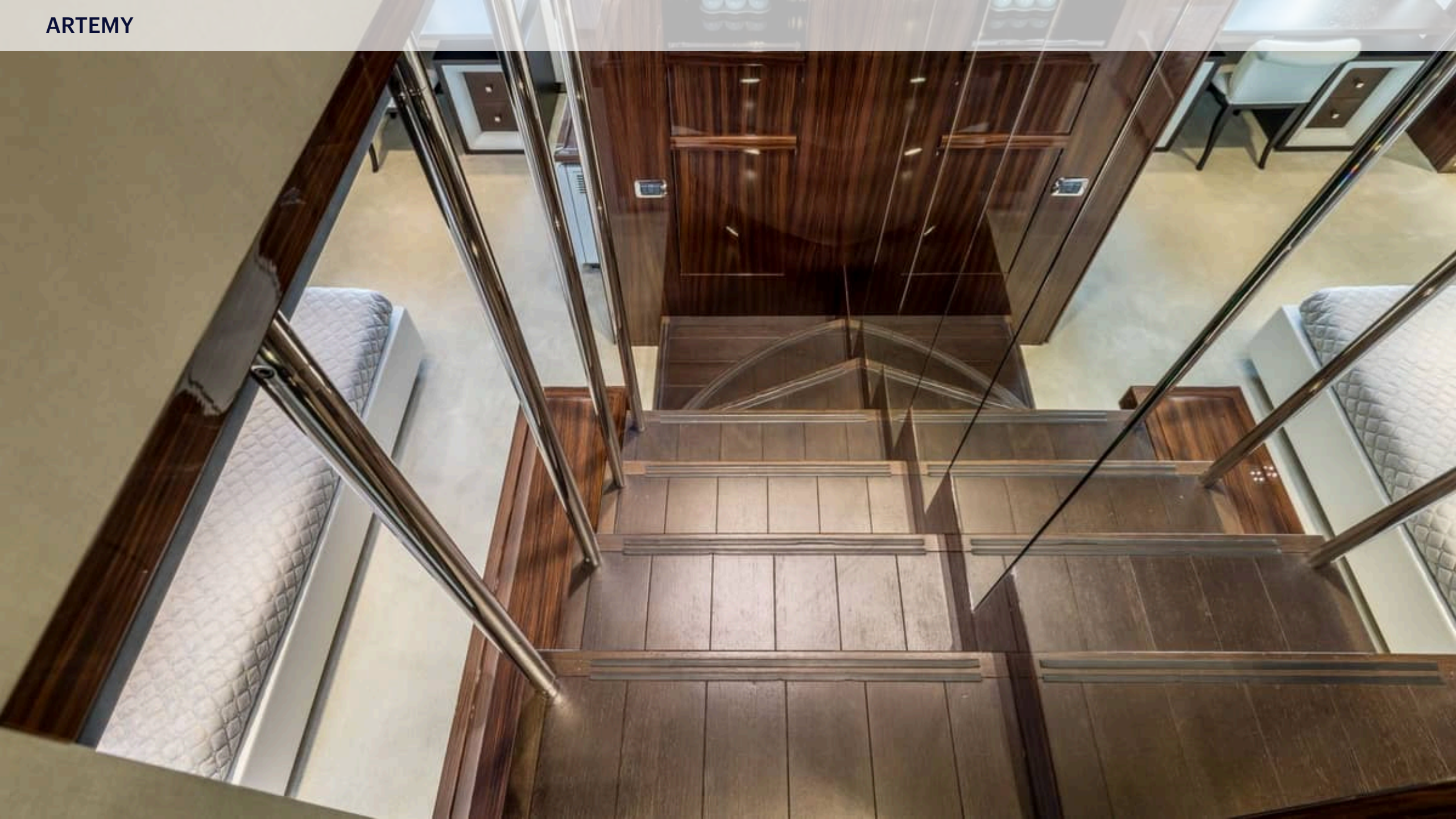








ARTEMY











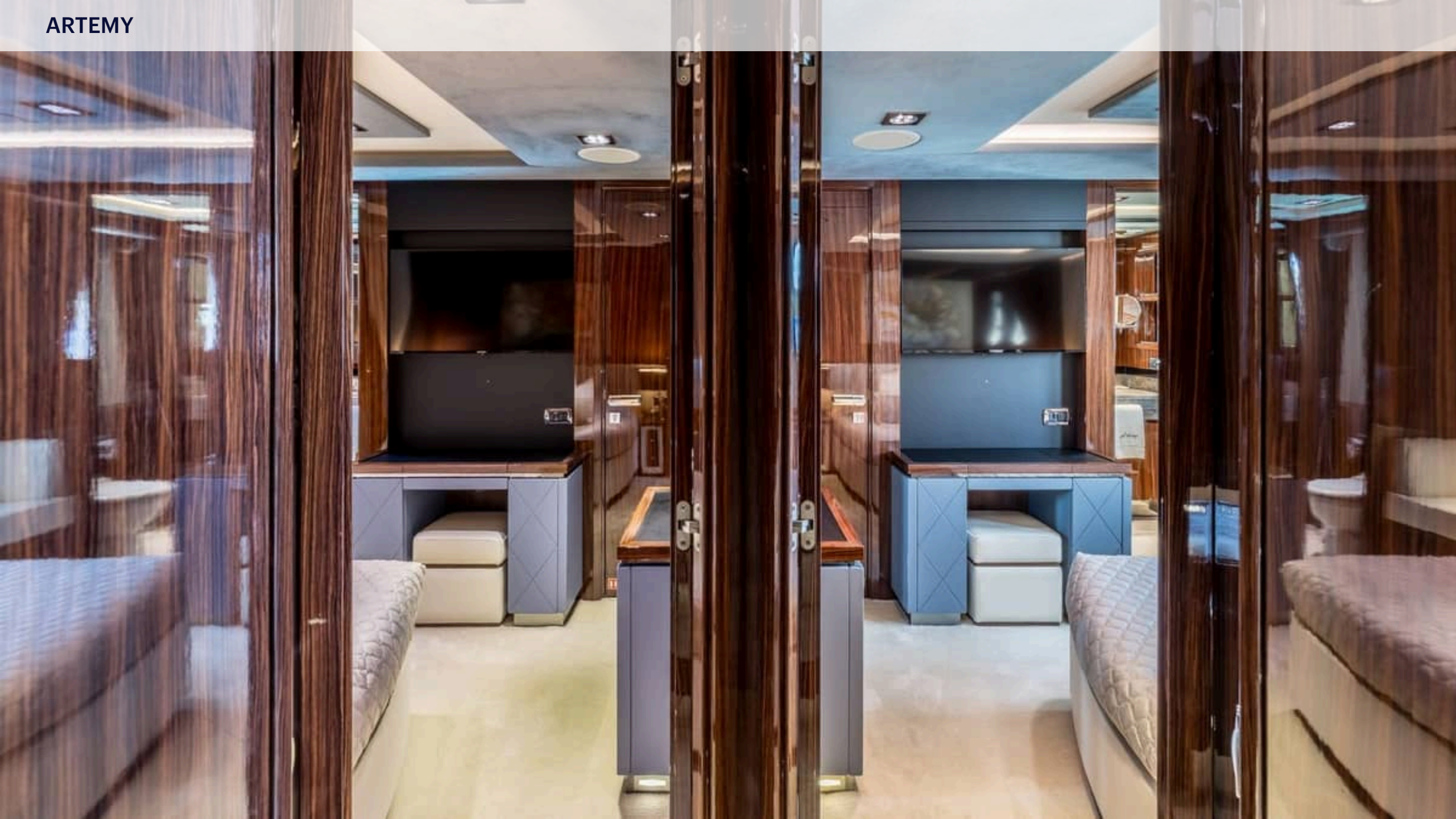
ARTEMY







ARTEMY



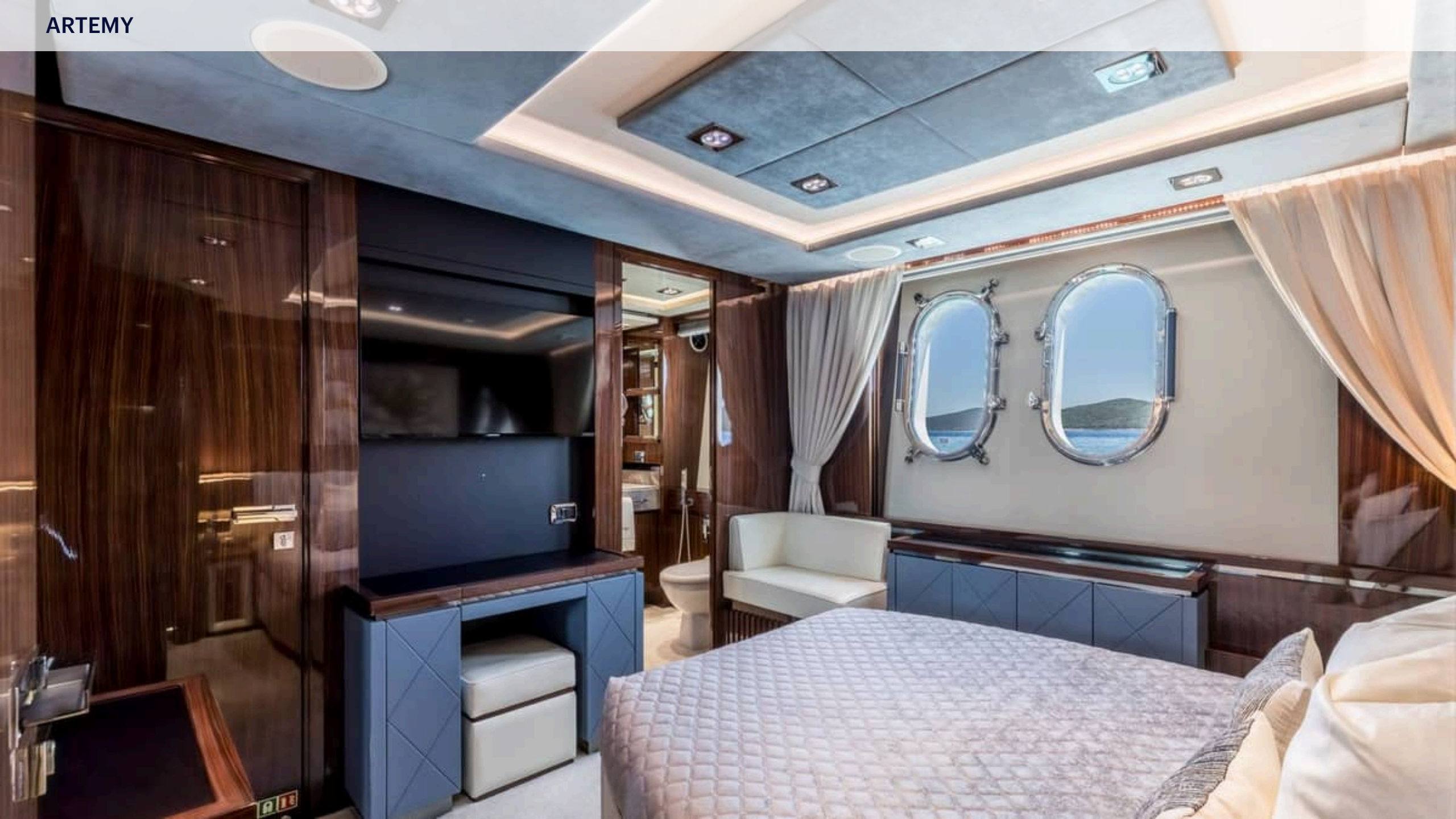














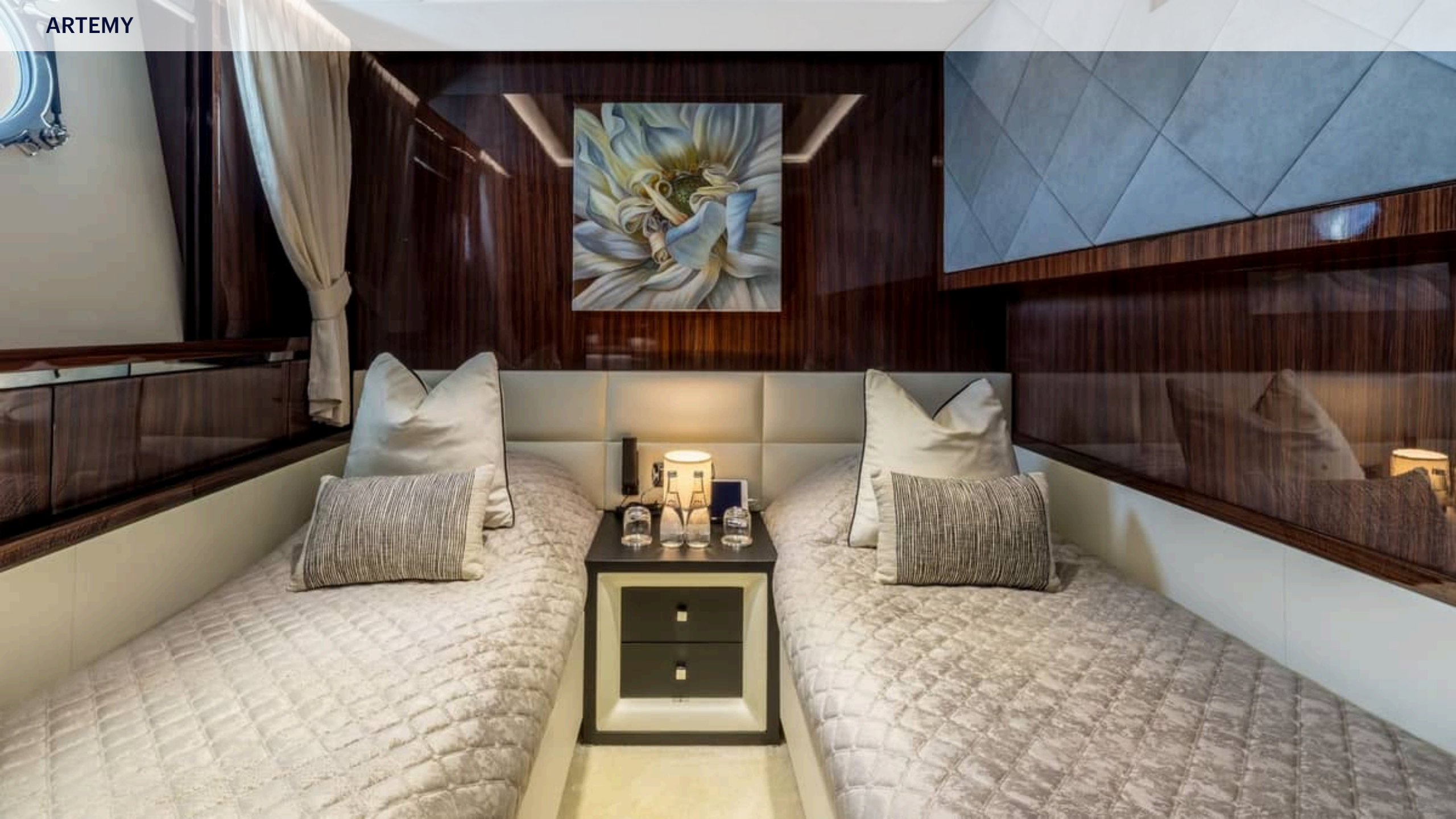
ARTEMY























ARTEMY



Artemy

ARTEMY



AZIMUT

ARTEMY



ARTEMY



ARTEMY









ARTEMY



ARTEMY



ARTEMY



ARTEMY







ARTEMY



ARTEMY



