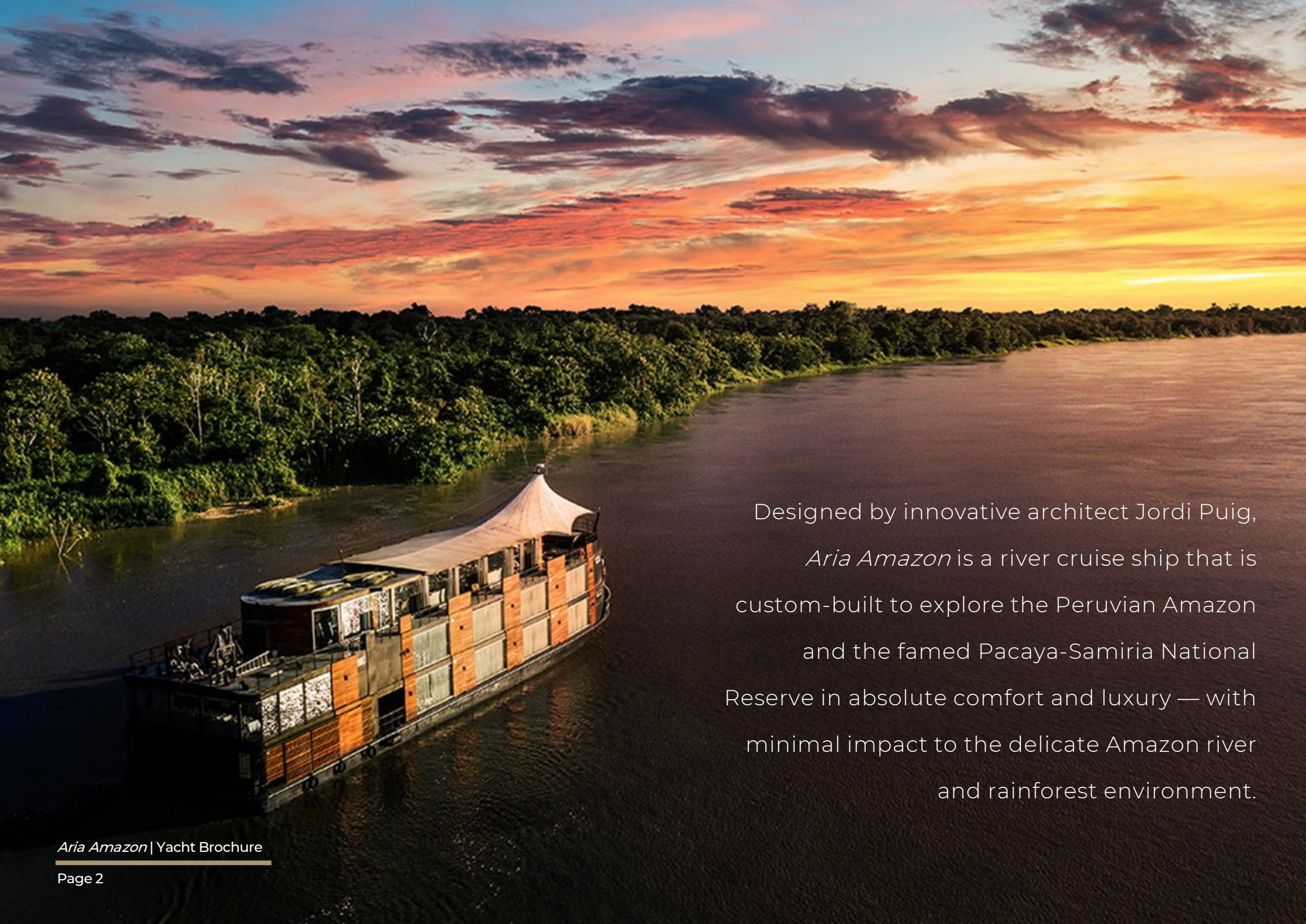




 ARIA AMAZON

---

45 M (147.8') | JORDI PUIG | 2010



Designed by innovative architect Jordi Puig, *Aria Amazon* is a river cruise ship that is custom-built to explore the Peruvian Amazon and the famed Pacaya-Samiria National Reserve in absolute comfort and luxury — with minimal impact to the delicate Amazon river and rainforest environment.

45m Jordi Puig

## *Aria Amazon*

*Aria Amazon* was custom-built in 2010 to explore the Peruvian Amazon River in uncompromising comfort with minimal impact on the delicate surrounding environment. There is no better way to witness the spectacle of the astounding natural wonder that is the Earth's longest river than aboard this luxurious 45m vessel.

Contextually, the *Aria Amazon* is a beautiful fit with the boat's cruising environment. It has a modern, contemporary design and creatively incorporates many indigenous and traditional materials into the interior. Her five-star facilities can host up to 32 guests in 16 suites, each with floor-to-ceiling windows to ensure guests keep an eye on the abundant wildlife. All suites are air-conditioned with en suite bathrooms and private lounge areas. There are also two pairs of suites that can be interconnected to create a larger shared space, ideal for families.

In addition to the unbeatable adventures, *Aria Amazon* also offers a delicious culinary experience. World-renowned chef Pedro Miguel Schiaffino of Malabar in Lima has created comprehensive dining menus that bring the tastes and flavours of the Amazon River onto the plate for guests to savour while they watch it drift by.

Experienced river pilots and the most rigorous standards ensure smooth travel and safety on the Amazon River. A crew of 27 includes a paramedic and four English-speaking naturalist guides. The crew-to-guest ratio ensures a superbly high level of hospitality and service on board.

*Aria Amazon*, winner of the 2016 Condé Nast Traveler Readers Choice Award, presents a unique opportunity to tour the wonders of the Amazon River and rainforest in unrivalled luxury.

*Aria Amazon* | Yacht Brochure

---



## AMAZON RIVER

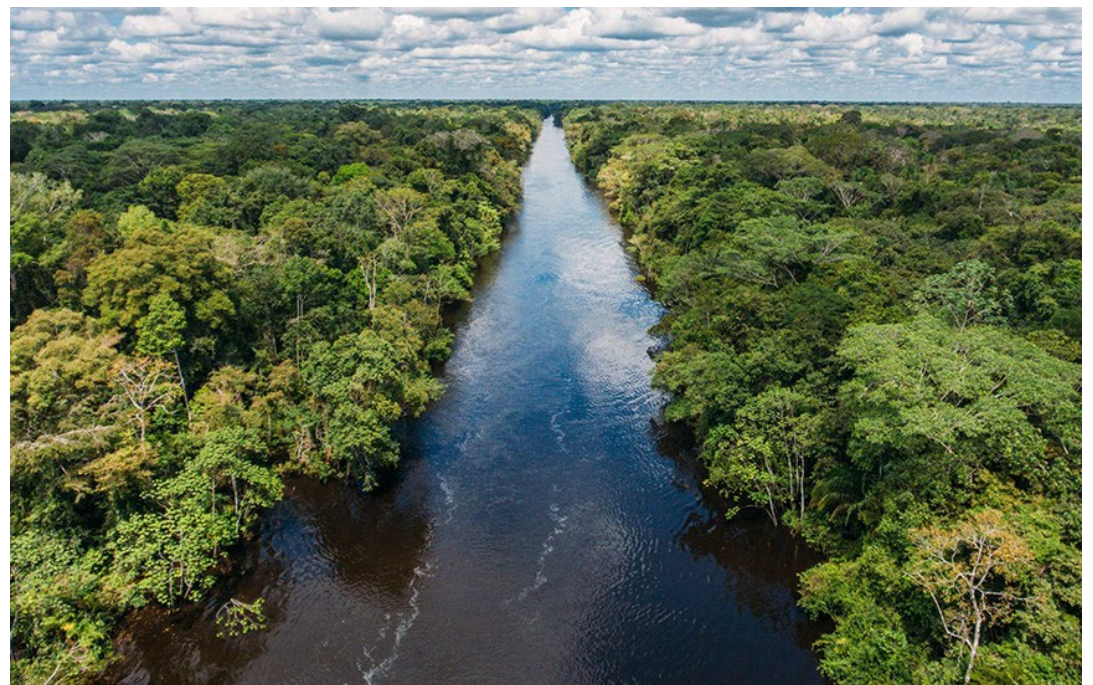
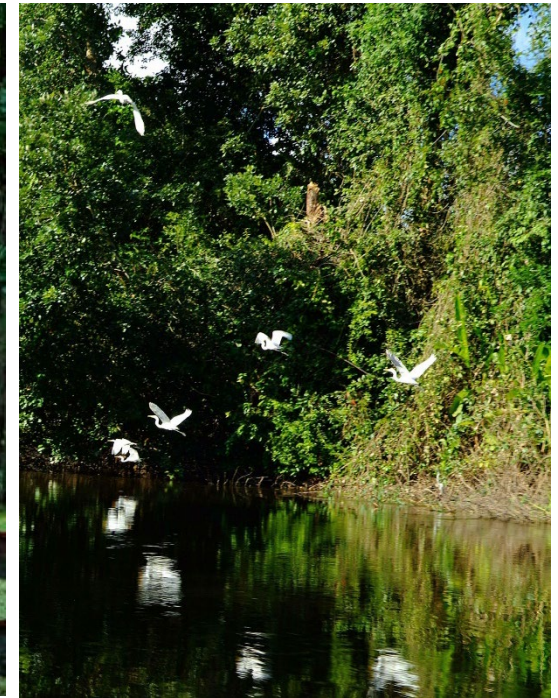
# PERU

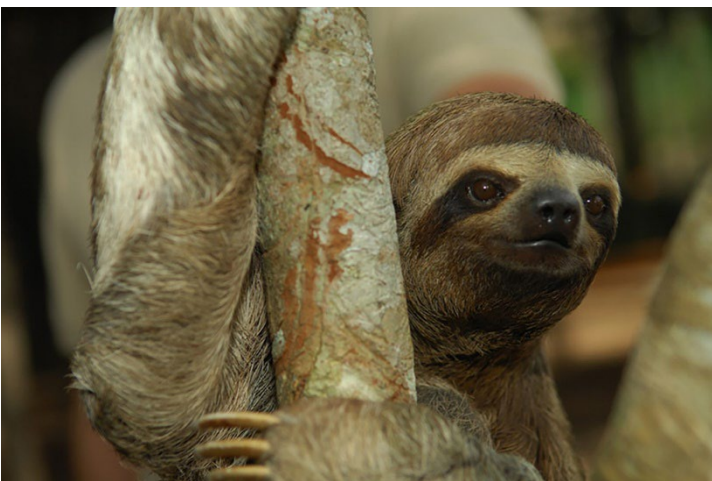
The longest river in Southeast Asia and the 12th longest on Earth, the Mekong River stretches 4,350 kilometres, or 2,703 miles, from high on the icy Tibetan Plateau to the southeast, meanders through Laos and Thailand to the equatorial flood plains of Cambodia and Vietnam then finally flows into the South China Sea. The Mekong also forms the international border between Myanmar (Burma) and Laos, as well as most of the border between Laos and Thailand.

Two thousand years of human history flow along the Mekong River. It is said that the rise and fall of the great Khmer civilization that built Angkor Wat was inextricably linked to the Mekong's shifting tides. Today, around 60 million people live, work and play on the Mekong. Fish from the river comprise Cambodia's single largest source of protein and it is rightly called the rice bowl of Vietnam, as it is on the fertile lands of the Mekong River Delta that the Vietnamese people grow half their nation's agricultural product.

Put aside what you've heard about Southeast Asia's infernal days and monsoonal downpours. Travelling across this captivating region aboard the *Aria Amazon* extends the optimal time to visit Cambodia and Vietnam from the very limited dry season between November and February to a full 48 weeks per year, excluding four weeks of maintenance.

Tropical temperatures across Southeast Asia generally fluctuate between 26°C (78°F) and 32°C (86°F). In the warmest months of March and April, this figure may climb as high as 38°C (100°F) but Mekong River waters flow from the icy Tibetan Plateau. This takes the edge off this equatorial swelter, making river travel the ideal way to experience this captivating region.





## PERU WILDLIFE

FINE DINING ON ARIA AMAZON WITH CONSULTING

## Chef Pedro Miguel Schiaffino

Aboard the *Aria Amazon*, expect sumptuous and refined Peruvian cuisine orchestrated with native Amazonian ingredients. Curated by award-winning chef Pedro Miguel Schiaffino, the dining experience adds a multi-sensory dimension to your journey unlike any other cruise.

Pedro Miguel Schiaffino was the chef and previous owner of Malabar and ámaZ, which used to be two of Lima's most cutting edge and innovative restaurants prior to their closure. He is also part of the Executive Committee of the CIA's Latin Cuisines Advisory Council and founder of the catering company Schiaffino Gastronomika.

Schiaffino's cuisine fuses Peruvian ingredients with traditional techniques, and his ability to transform unusual ingredients into authentic delectable dishes is echoed in both *Aria Amazon* and *Aria Amazon's* culinary offerings. Schiaffino focuses on using fresh and locally sourced produce, with 70 percent of all ingredients used onboard sourced within Amazonia.

Aqua Expeditions' partnership with Pedro Miguel Schiaffino transcends the unique culinary proposal offered onboard our expeditions, with meaningful collaborations for conservations projects, such as the protection and rehabilitation of native paiche fish population, as well as our work with local river communities to foster sustainably sourced produce in the Amazon taking center stage.



# SPECIFICATIONS

---

---

<b>Length</b>	45m (147.8ft)
<b>Beam</b>	9m (29.6ft)
<b>Draft</b>	1.5m (4.1ft)
<b>Builder</b>	Jordi Puig
<b>Year</b>	2010

---

**Interior Designer** Jordi Puig

---

**Guests** 32 in 16 cabins

---

## Key features

- All-inclusive rate with tax paid
- Well-appointed and flexible accommodation for 32 guests
- Daily wildlife safaris guided by expert naturalists included
- Piranha fishing, kayaking and cycling excursions

---

**Cabins** 16 x Convertible

---

**Gross tonnage** 500

---

**Engines** 2 x 400hp Cummins marine engines

---

**Cruising speed** 8 Knots

---

**Max speed** 12 Knots

---

**Fuel consumption** N/A (Included in the rate)

---

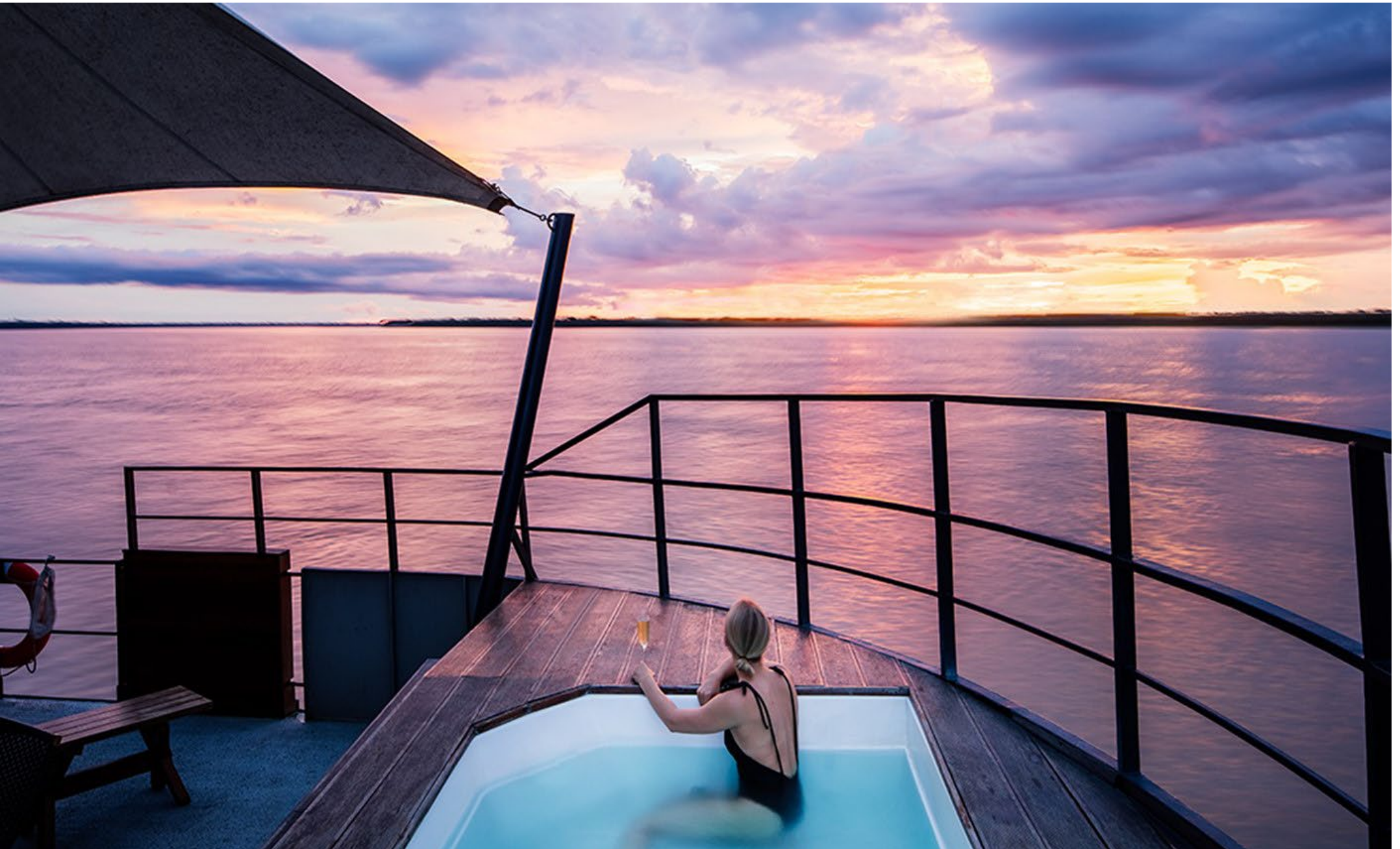
**Crew** Captain + 25

---

\*This document is not contractual. Any information/images provided by the company is provided in good faith and offered for information purposes only. The company does not make any representation, warrant or assume any legal liability or responsibility whatsoever, express or implied, for the accuracy, reliability, completeness or usefulness of any information/images displayed. Yacht inventory, charter prices and any other specifications are subject to changes at any time without prior notice. None of the information/images used by the company may be reproduced without its written consent

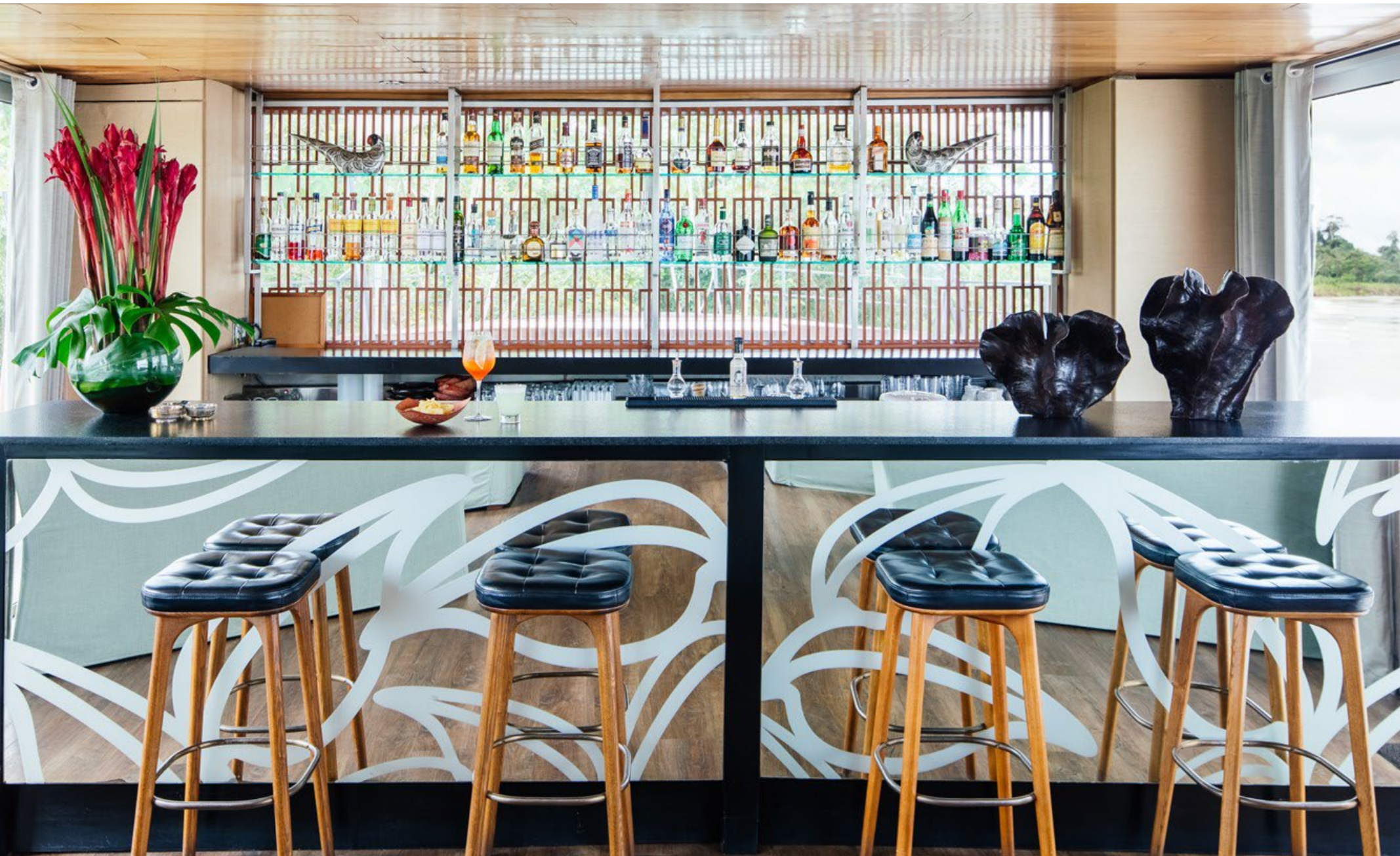




















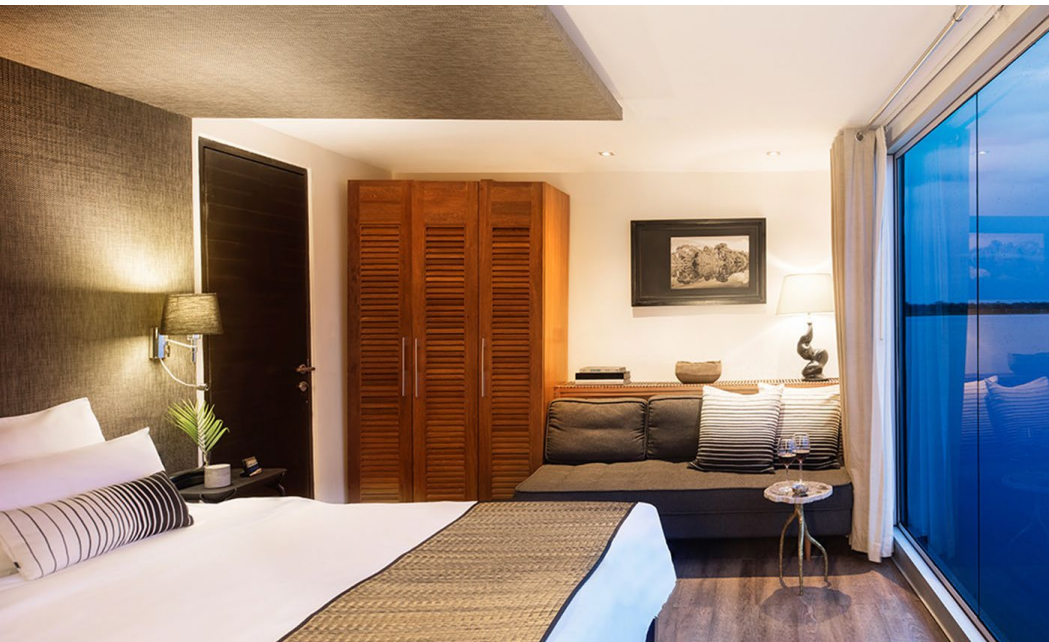
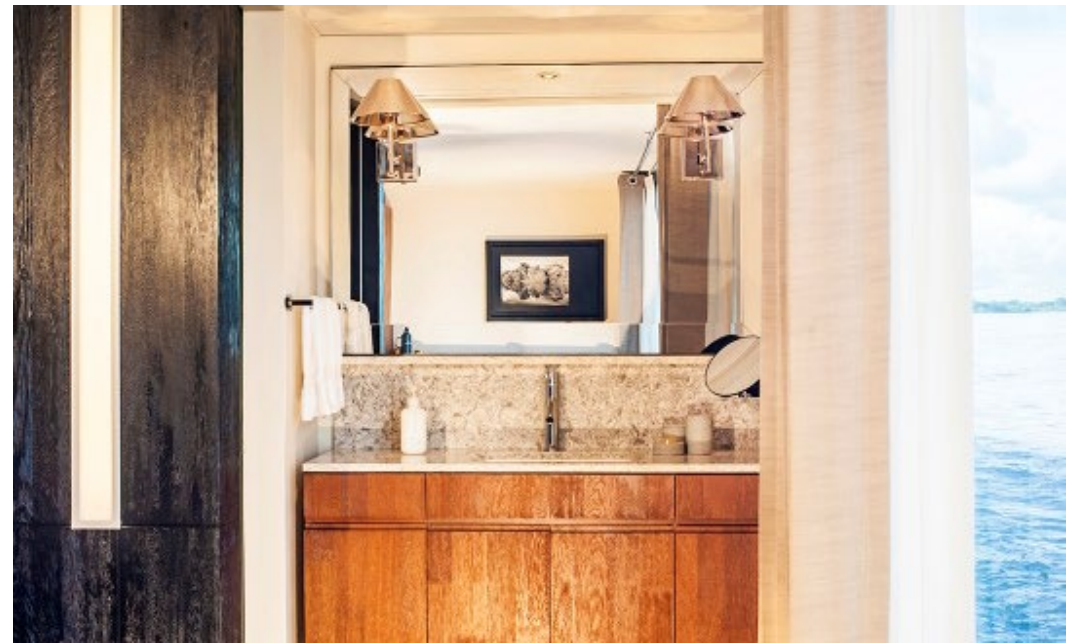








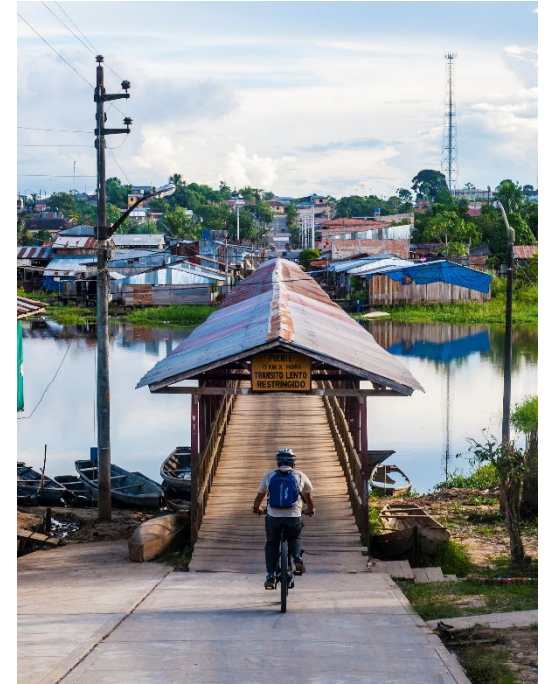
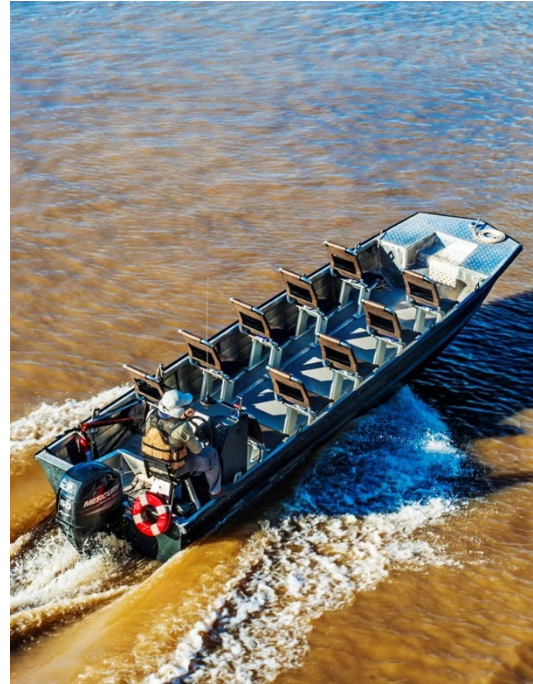




*Aria Amazon*

## Tenders and toys

- > 4 x Auxiliary aluminium launch boats each equipped with two four-stroke low-emission engines, (each boat has a capacity of 8 passengers)
- > 8 x Double kayaks
- > 10 x top-of-the-line Cannondale all-terrain bicycles
- > Piranha fishing equipment

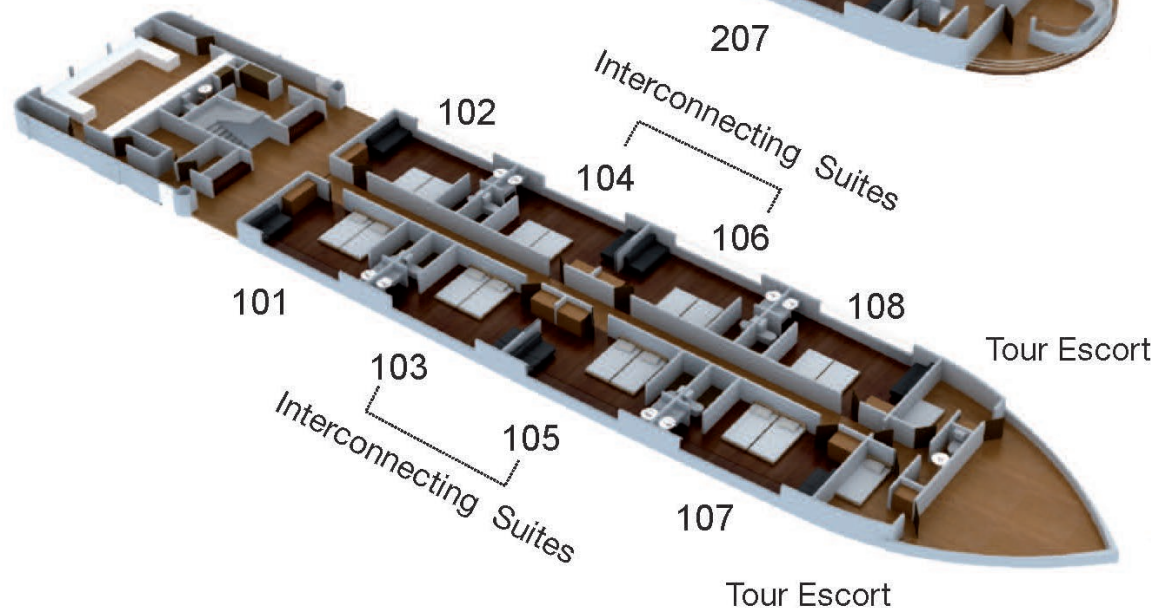
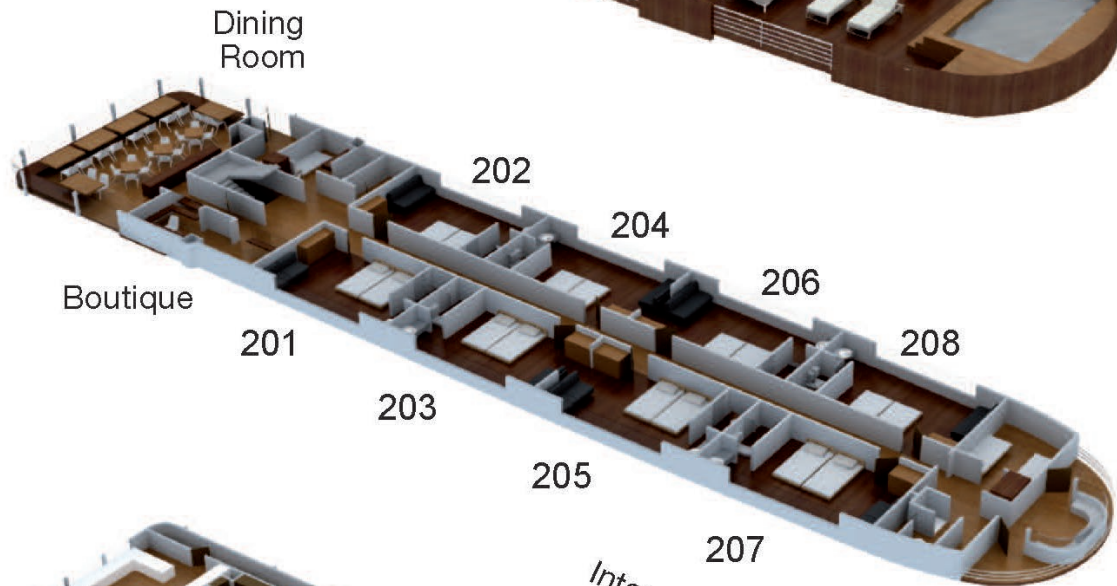
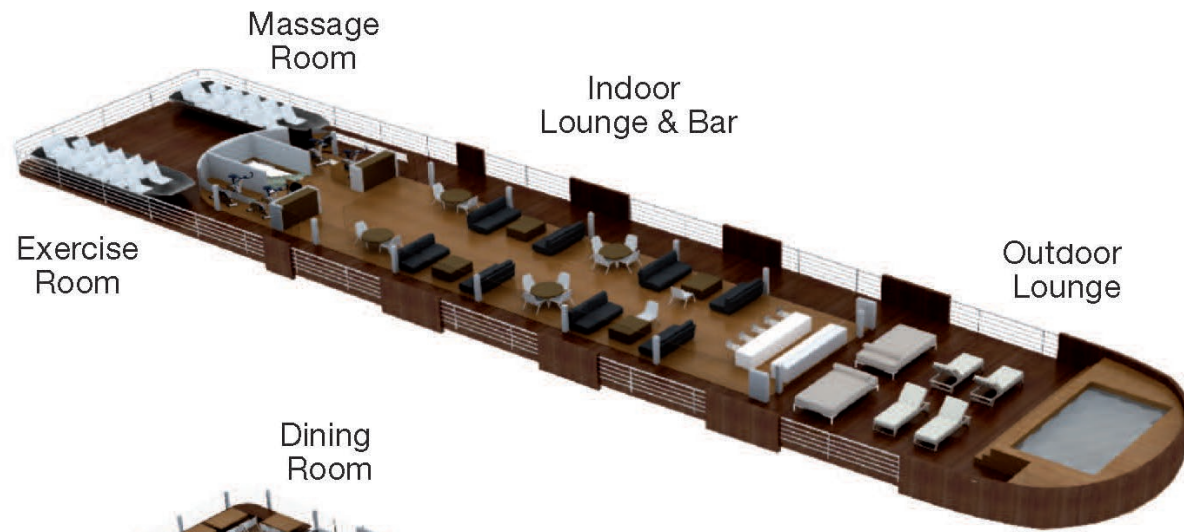












Watch the teaser  
video online

CLICK TO WATCH

