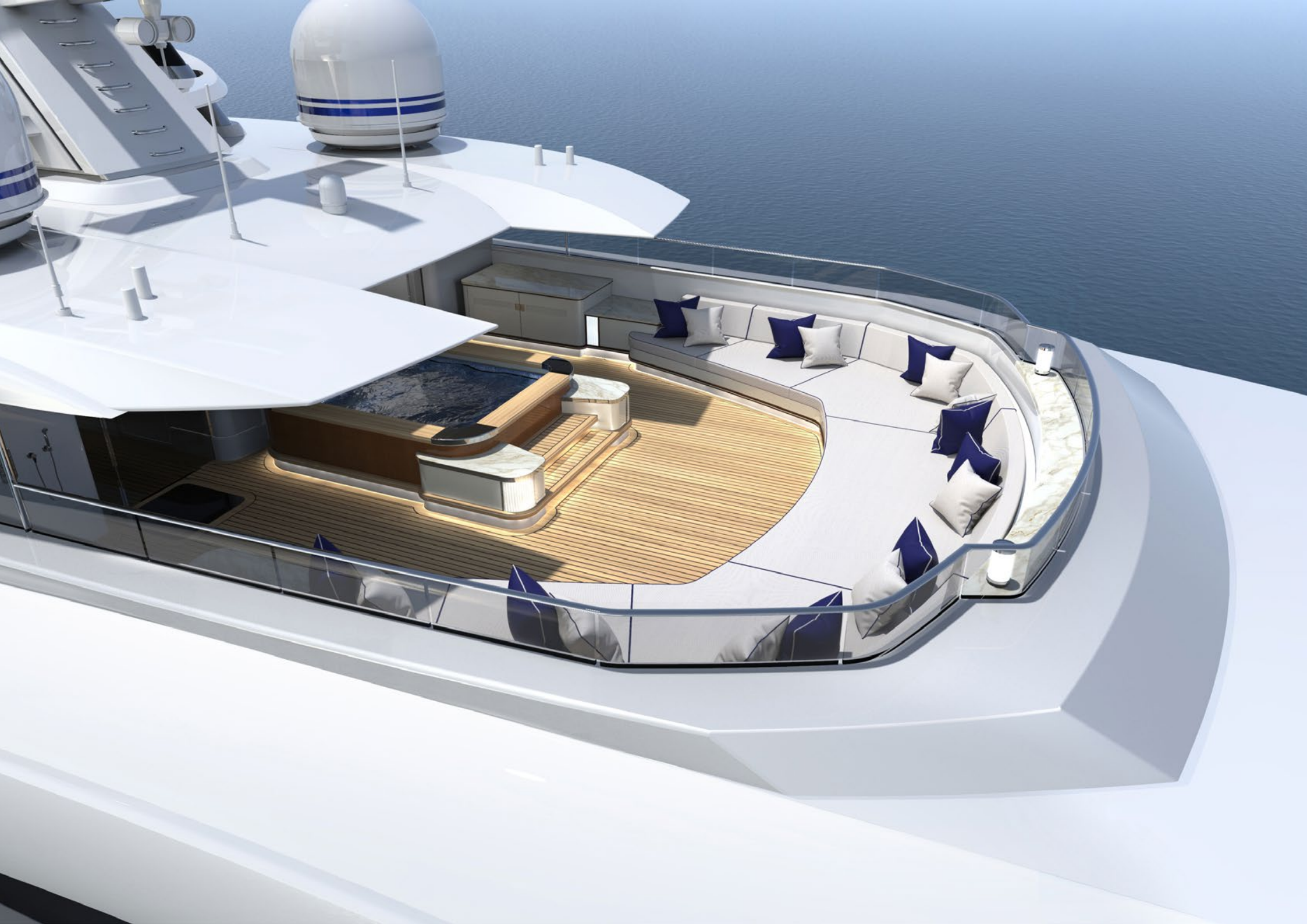


E-BROCHURE

# Angelique



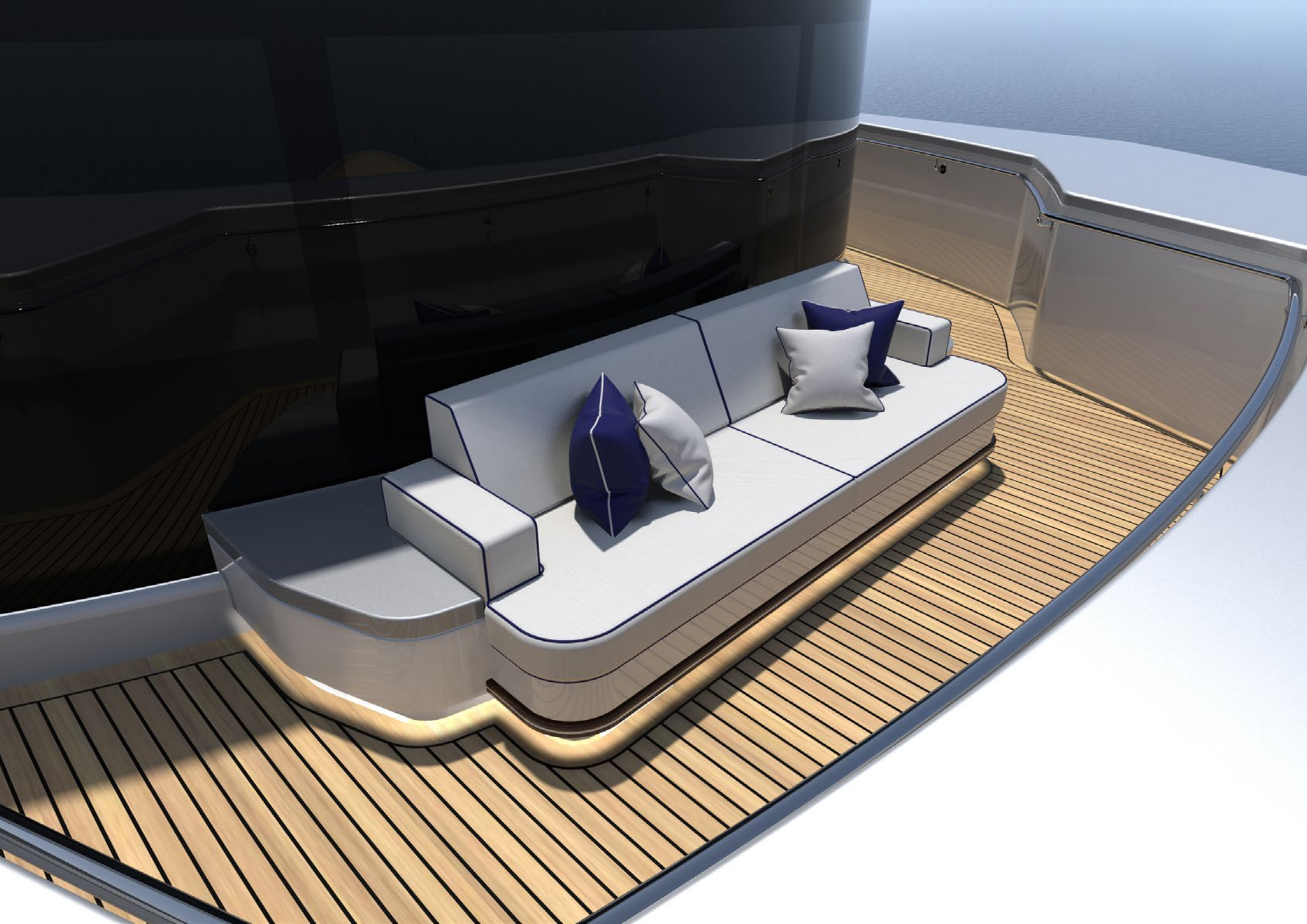


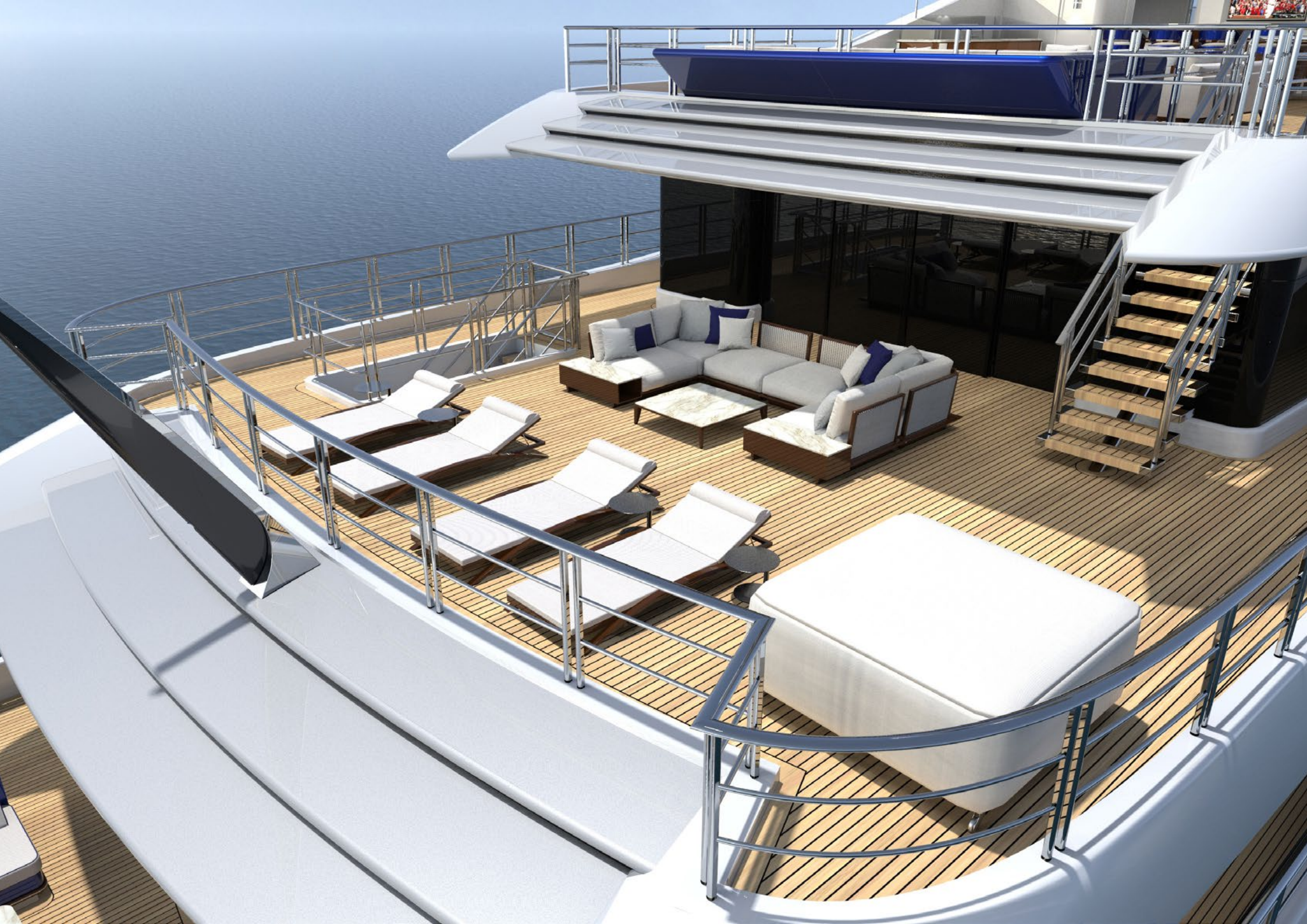


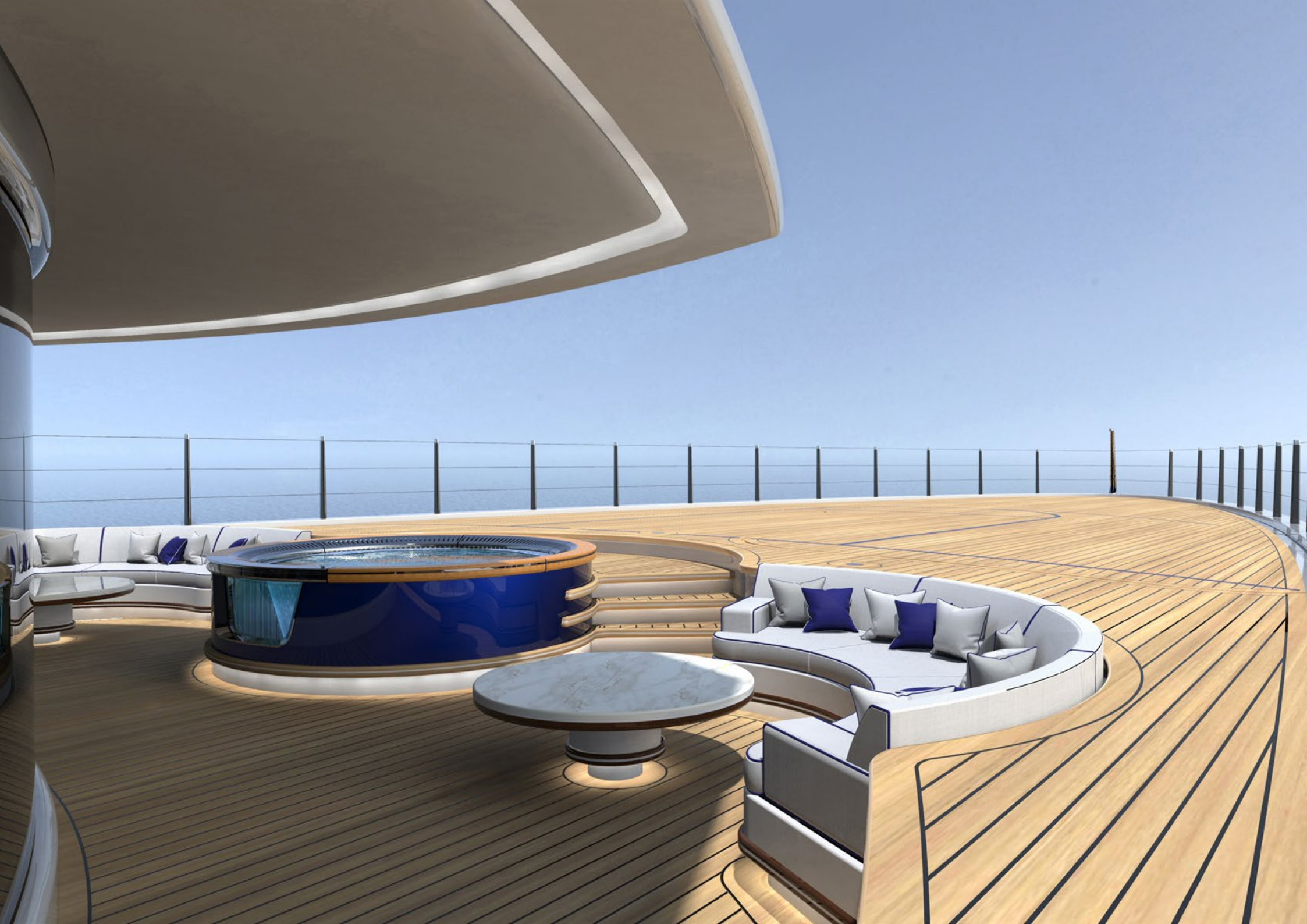


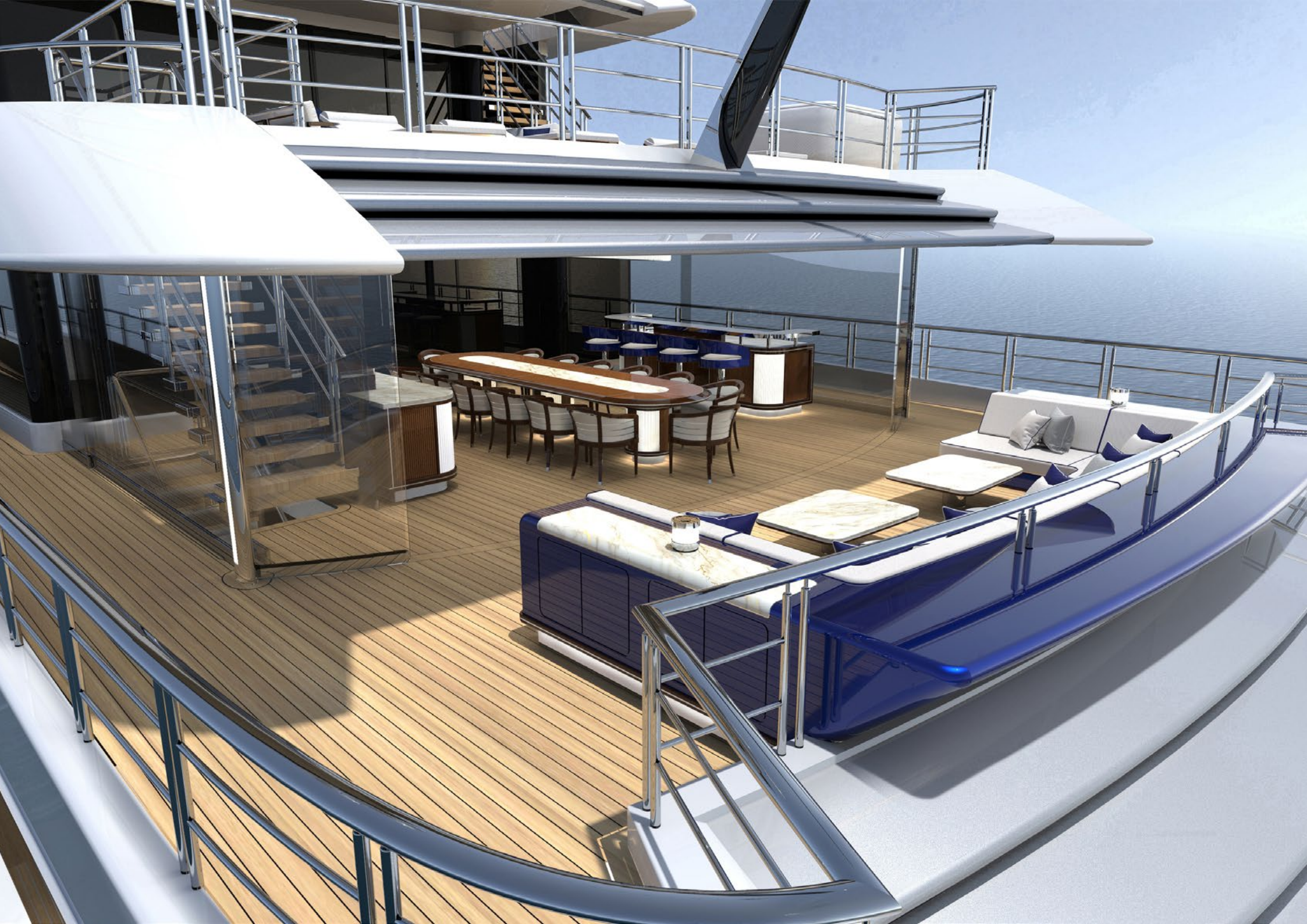


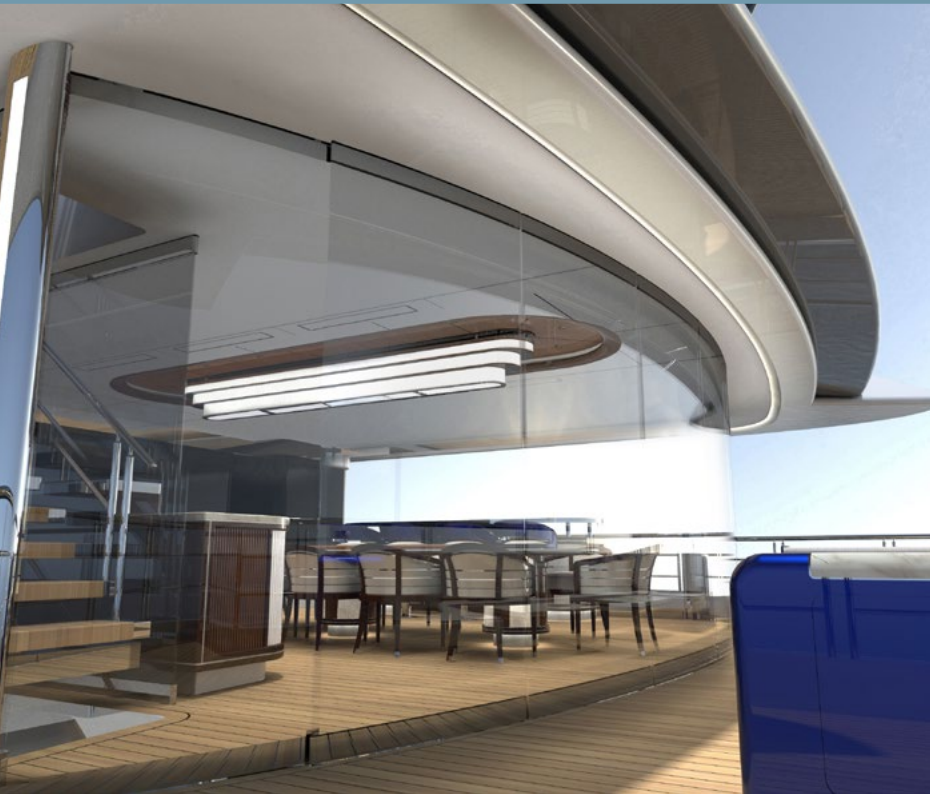


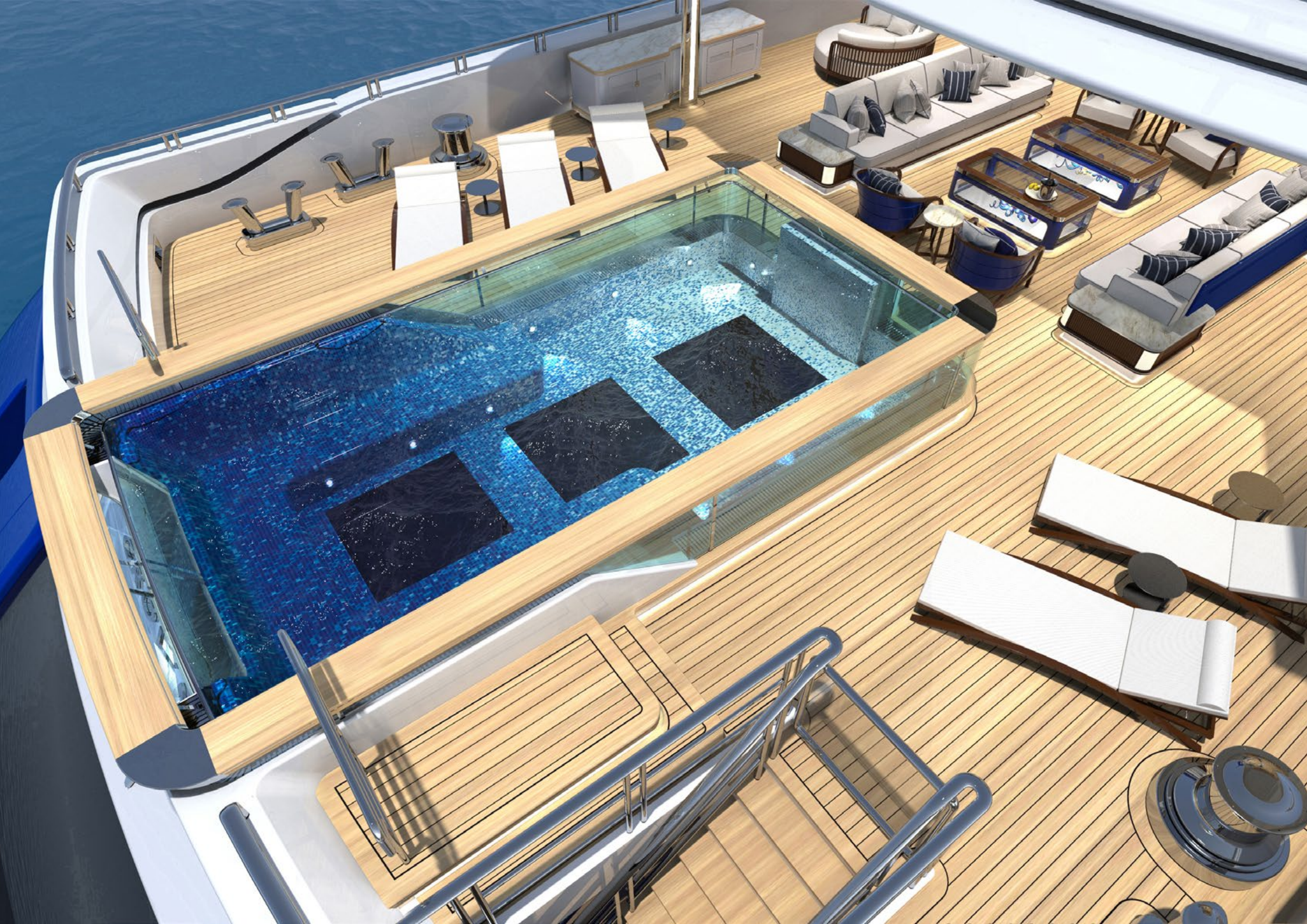










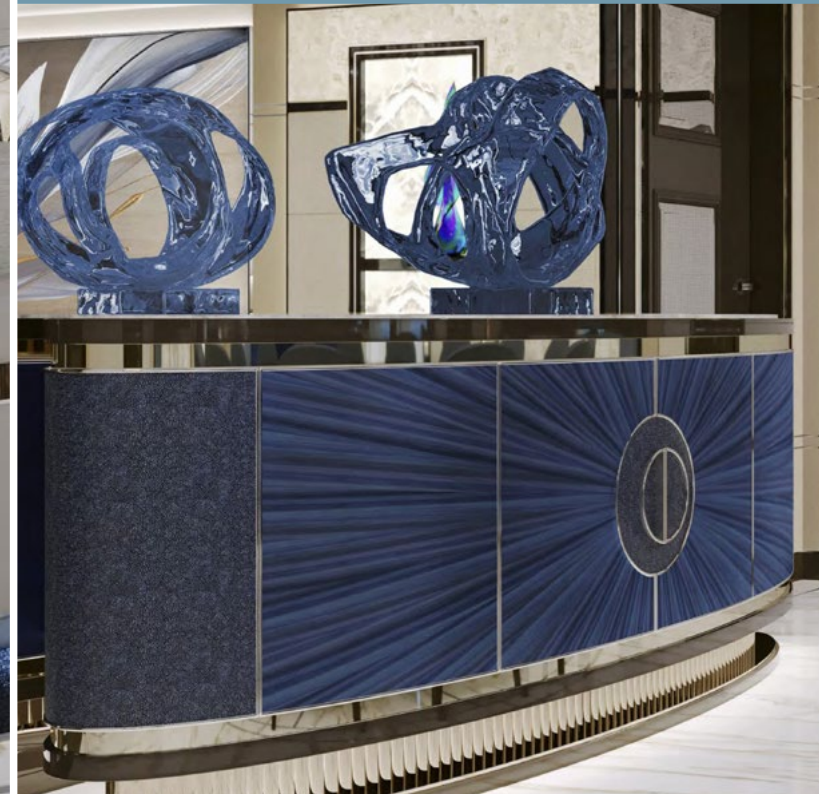






























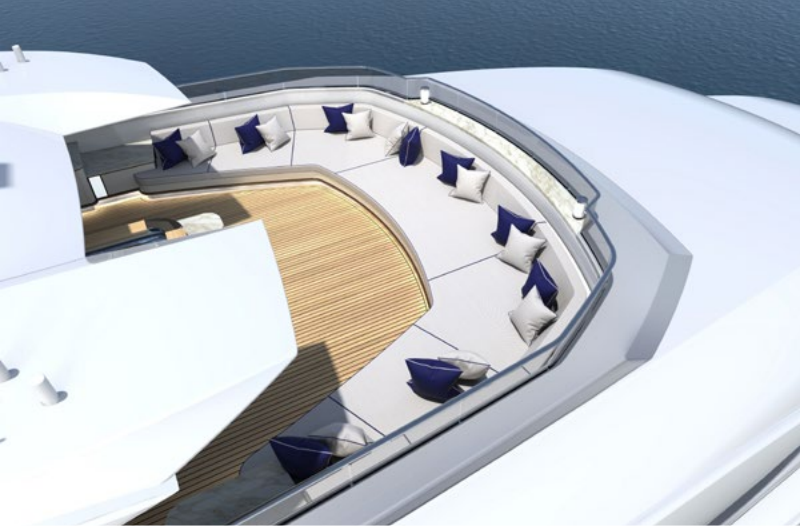












# SPECIFICATIONS

## MAIN CHARACTERISTICS

Builder: Turquoise Yachts

LOA: 87.70m / 287'9"

Crew: Up to 27

Built: 2026

Accommodation: 12 guests in 7 cabins

Cabin configuration: 1 x master, 2 x VIP, 3 x double,  
1 x convertible

Speed: 14 knots cruising

## TENDERS & TOYS

1 x 9.80m landing craft (14 pax)

1 x 8.80m limo tender (10 pax)

1 x 5.70m SOLAS crew / rescue tender

2 x Sea-Doo GTR-X 300

1 x Sea-Doo Spark Trixx 1up

Paddleboard

SEABOB

WaveRunner

Slide

Snorkelling gear

Waterski (adult)

Towables

## KEY FEATURES

Owner's Suite with office

Owner's private terrace with jacuzzi

Indoor & outdoor dining on Owner's Deck

Basketball court on Foredeck

Touch & go helipad on Foredeck

6.5m pool with counter flow jet stream on Main Deck

Gym and Wellness Suite inc. sauna, hammam and beauty salon on Bridge Deck

Jacuzzi with TV on Sun Deck

Massage Room in Beach Club

Hospital room

Lift access from Beach Club to Main Deck

Main Lift over 5 expansive decks

Drive-in tender bay in Beach Club

*Advertising of the above vessel in either printed publications on the internet or in any other medium is not permitted without prior permission from the Owner via the Central Agent.*

*All particulars are given in good faith and are believed to be correct but cannot be guaranteed.*

