



# AGRAM

144' 11" (44.17M) | HEESSEN | 2008



BASIC SPECIFICATIONS				
BUILDER	FUEL TYPE	GROSS TONNAGE	CRUISING/MAX SPEED	ACCOMMODATION
Heesen	Diesel	458 GT	14.5 knots / 24 knots	12 guests in 6 cabins
INTERIOR DESIGN	EXTERIOR DESIGN	LENGTH	BEAM	HULL MATERIAL
Omega Architects & Heesen	Omega Architects	144' 11" (44.17m)	29' 7" (9m)	Aluminum
CREW	FLAG	BUILT/REFIT	DRAFT (F/M)	ENGINES
9	Croatia	2008 / 2024	8' 3" (2.5m)	2 x MTU 16V 4000 M90

## KEY FEATURES

- › FULL EXTERIOR REPAINT IN 2024
- › UPPER SALON CAN BE CONVERTED AS A VIP STATEROOM
- › AMPLE SPACE FOR SUNBATHING
- › EXPERIENCED AND LONG TERM CREW
- › STYLISH AND MODERN INTERIOR
- › VERY SPACIOUS SUNDECK
- › A WIDE SELECTION OF WATER TOYS
- › SUPERSIZE JACUZZI ON SUNDECK

## WATER TOYS

- › 1 X JET TENDER CIRUS 6.50M WITH 260 BHP
- › 1 X JET SKI YAMAHA FX SHO WITH 160 BHP
- › 1 X STAND UP PADDLE BOARD
- › 2 X KAYAK
- › 1 X BANANA
- › 2 X WATER SKI
- › DIVE GEAR (RDV DIVING ONLY)
- › 1 X JET SKI YAMAHA SVHO WITH 260 BHP
- › 1 X SEABOB F5S
- › 1 X SEA DOO RS3 UNDERWATER SCOOTER
- › 1 X WAKE BOARD
- › 1 X DOUGHNUT
- › SNORKELING AND FREEDIVING GEAR





































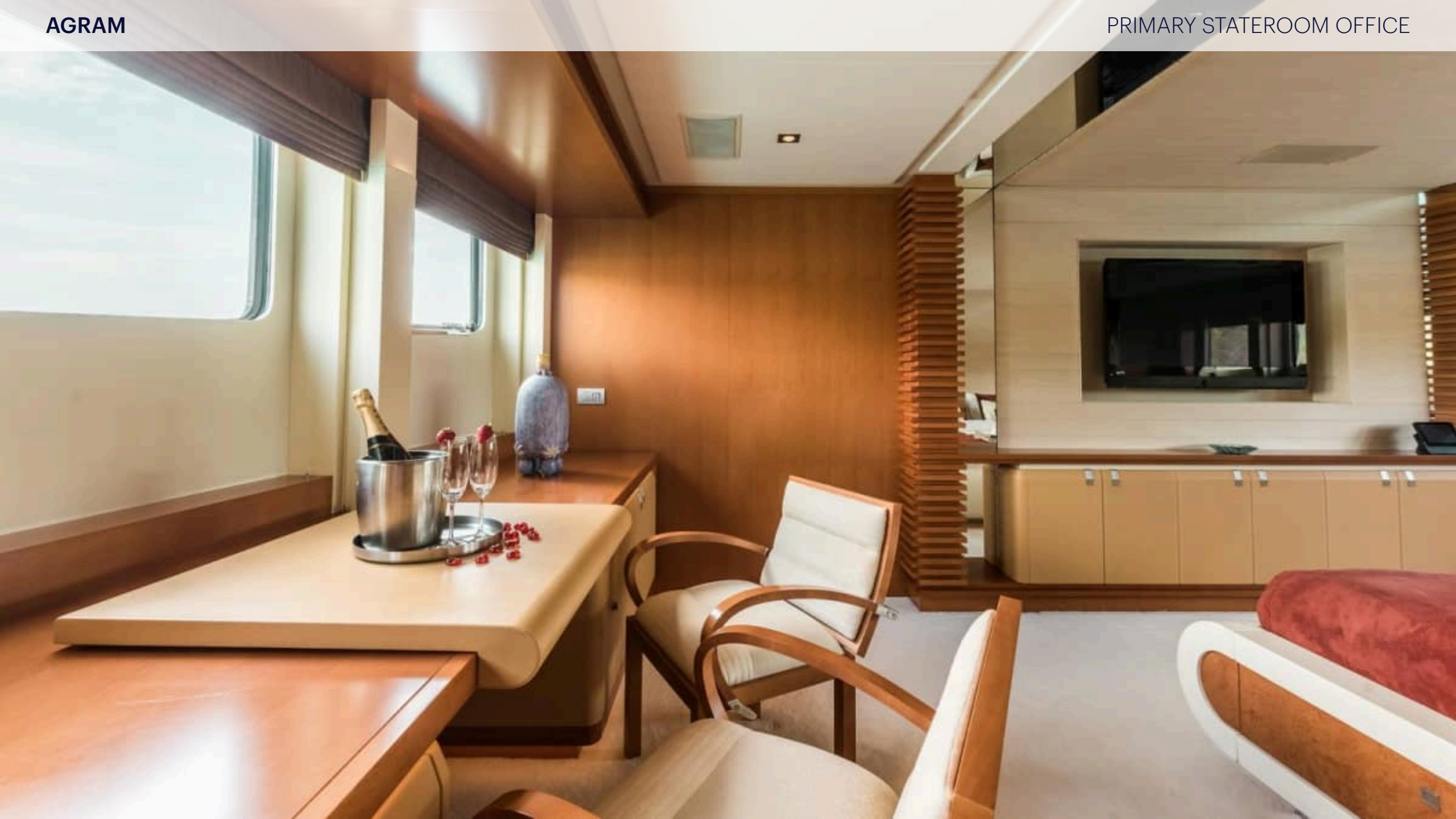
































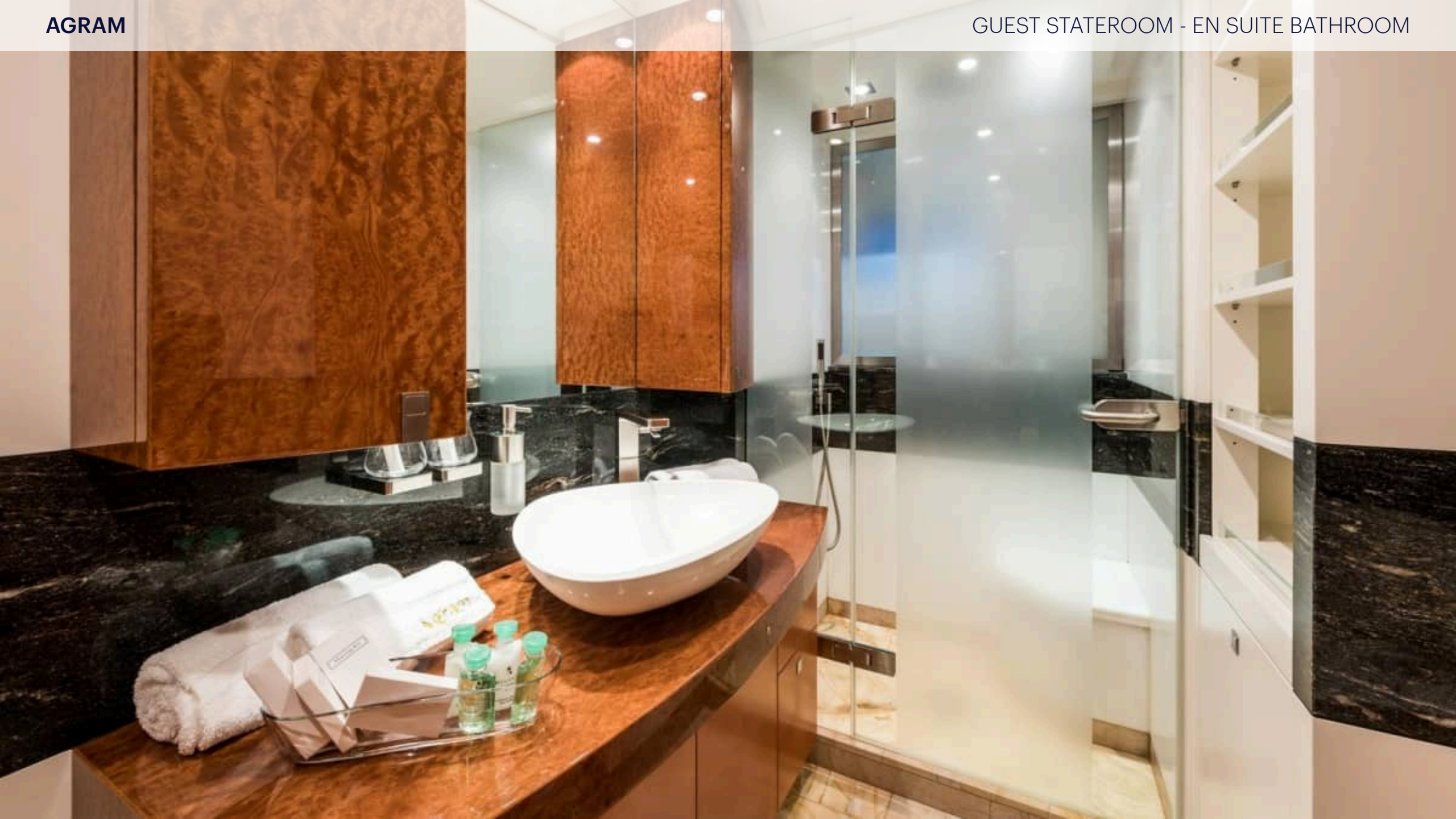




























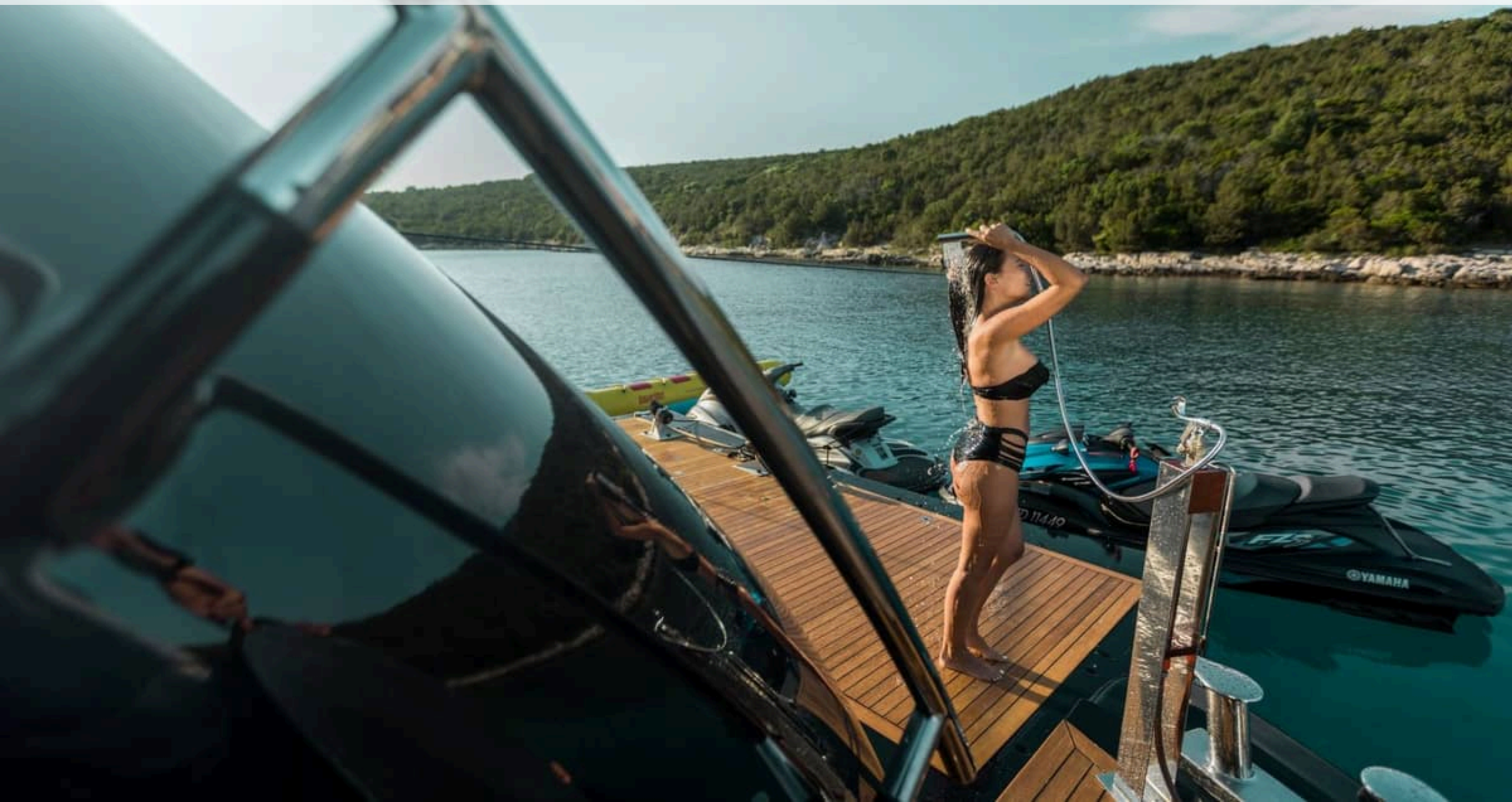














































AGRAM

TENDER















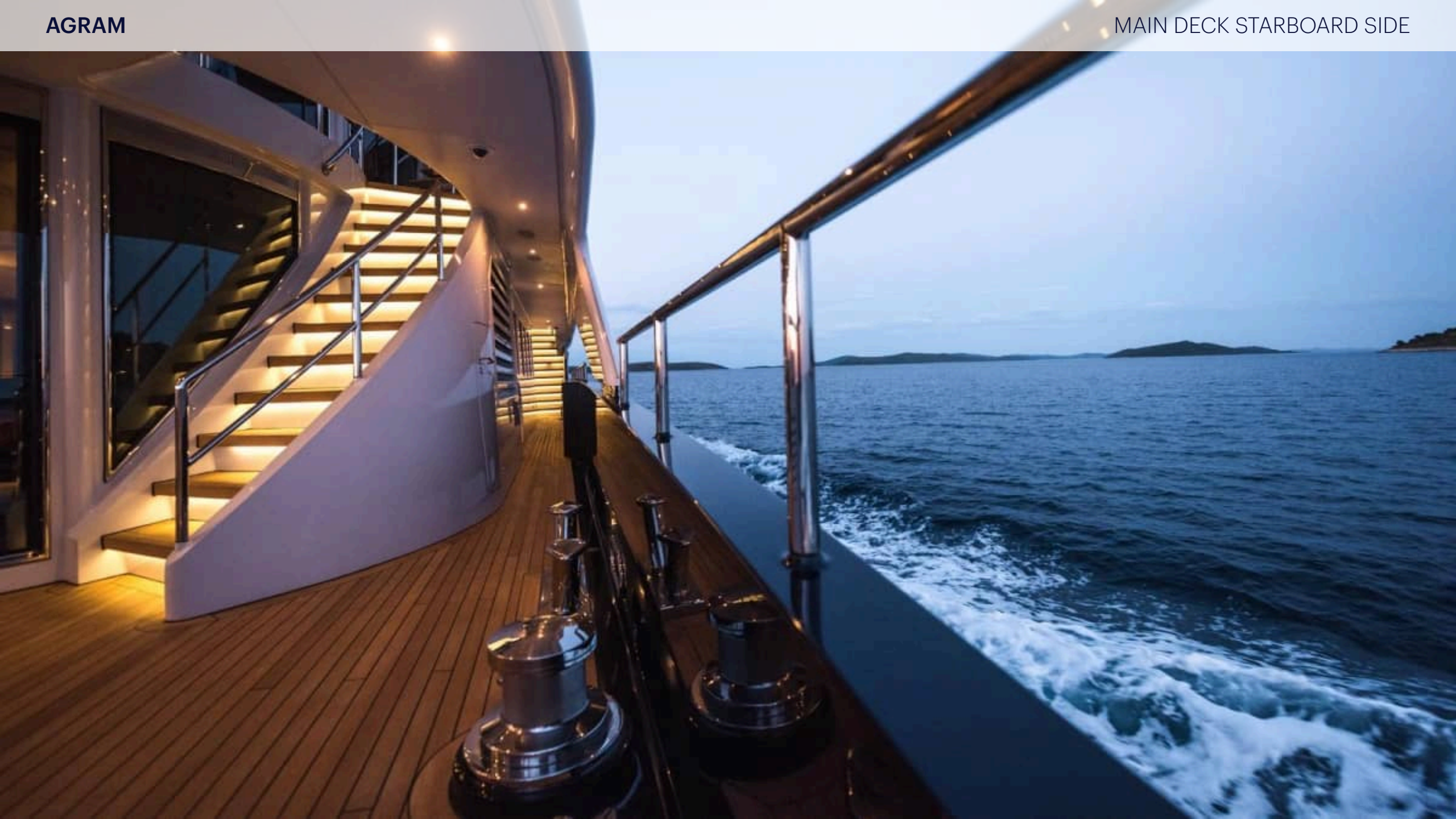












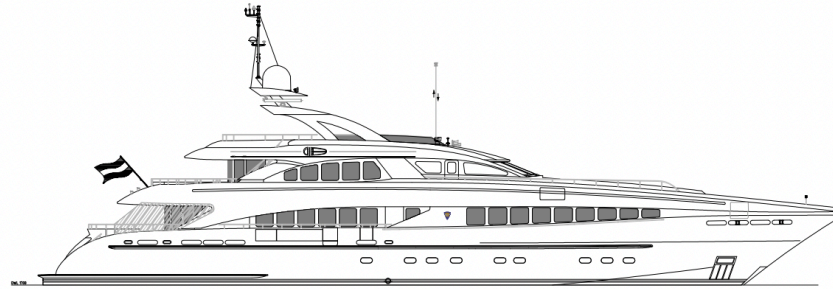




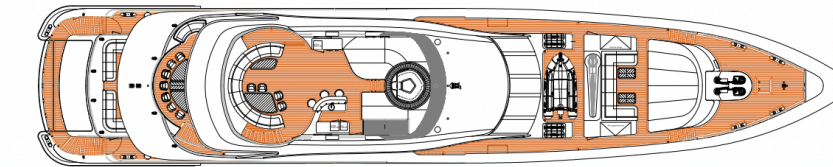
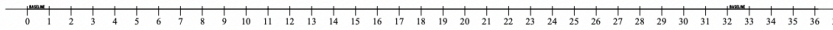


# m/y Agram

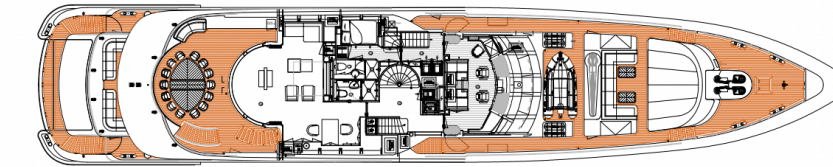
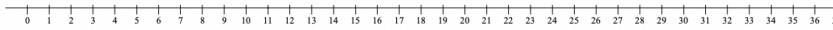
## HESSEN YACHTS 4400



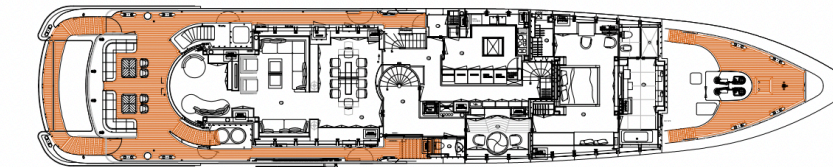
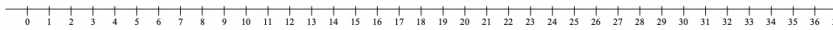
PROFILE



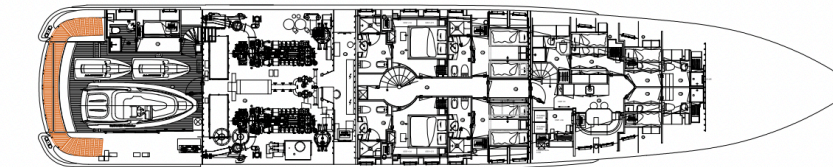
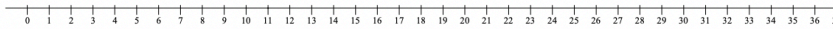
SUNDECK



WHEELHOUSE  
DECK



MAINDECK



LOWERDECK

